



King's Research Portal

DOI:

[10.1016/j.bpsc.2021.12.008](https://doi.org/10.1016/j.bpsc.2021.12.008)

Document Version

Peer reviewed version

[Link to publication record in King's Research Portal](#)

Citation for published version (APA):

Rosenberg, B. M., Taschereau-Dumouchel, V., Lau, H., Young, K. S., Nusslock, R., Zinbarg, R. E., & Craske, M. G. (2021). A Multivoxel Pattern Analysis of Anhedonia During Fear Extinction: Implications for Safety Learning. *Biological Psychiatry: Cognitive Neuroscience and Neuroimaging*. Advance online publication. <https://doi.org/10.1016/j.bpsc.2021.12.008>

Citing this paper

Please note that where the full-text provided on King's Research Portal is the Author Accepted Manuscript or Post-Print version this may differ from the final Published version. If citing, it is advised that you check and use the publisher's definitive version for pagination, volume/issue, and date of publication details. And where the final published version is provided on the Research Portal, if citing you are again advised to check the publisher's website for any subsequent corrections.

General rights

Copyright and moral rights for the publications made accessible in the Research Portal are retained by the authors and/or other copyright owners and it is a condition of accessing publications that users recognize and abide by the legal requirements associated with these rights.

- Users may download and print one copy of any publication from the Research Portal for the purpose of private study or research.
- You may not further distribute the material or use it for any profit-making activity or commercial gain
- You may freely distribute the URL identifying the publication in the Research Portal

Take down policy

If you believe that this document breaches copyright please contact librarypure@kcl.ac.uk providing details, and we will remove access to the work immediately and investigate your claim.

Journal Pre-proof

A multivoxel pattern analysis of anhedonia during fear extinction – implications for safety learning

Benjamin M. Rosenberg, MA, CPhil, Vincent Taschereau-Dumouchel, PhD, Hakwan Lau, D.Phil, Katherine S. Young, DPhil, Robin Nusslock, PhD, Richard E. Zinbarg, PhD, Michelle G. Craske

PII: S2451-9022(21)00351-7

DOI: <https://doi.org/10.1016/j.bpsc.2021.12.008>

Reference: BPSC 894

To appear in: *Biological Psychiatry: Cognitive Neuroscience and Neuroimaging*

Received Date: 8 September 2021

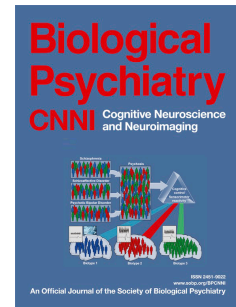
Revised Date: 1 December 2021

Accepted Date: 9 December 2021

Please cite this article as: Rosenberg B.M., Taschereau-Dumouchel V., Lau H., Young K.S., Nusslock R., Zinbarg R.E. & Craske M.G., A multivoxel pattern analysis of anhedonia during fear extinction – implications for safety learning, *Biological Psychiatry: Cognitive Neuroscience and Neuroimaging* (2022), doi: <https://doi.org/10.1016/j.bpsc.2021.12.008>.

This is a PDF file of an article that has undergone enhancements after acceptance, such as the addition of a cover page and metadata, and formatting for readability, but it is not yet the definitive version of record. This version will undergo additional copyediting, typesetting and review before it is published in its final form, but we are providing this version to give early visibility of the article. Please note that, during the production process, errors may be discovered which could affect the content, and all legal disclaimers that apply to the journal pertain.

© 2021 Published by Elsevier Inc on behalf of Society of Biological Psychiatry.



A multivoxel pattern analysis of anhedonia during fear extinction – implications for safety learning

Benjamin M. Rosenberg, MA, CPhil^{1*}, Vincent Taschereau-Dumouchel, PhD^{2,3}, Hakwan Lau, D.Phil⁴, Katherine S. Young, DPhil^{5,6}, Robin Nusslock, PhD^{7,8}, Richard E. Zinbarg, PhD^{7,9}, Michelle G. Craske^{1,10}

1. Department of Psychology, UCLA Life Sciences, USA
2. Department of Psychiatry and Addictology, University of Montreal, Montreal, Canada
3. Centre de Recherche de l'Institut Universitaire en Santé Mentale de Montréal, Montreal, Canada
4. RIKEN Center for Brain Science, Saitama 351-0198, Japan
5. Social, Genetic and Development Psychiatry (SGDP) Centre, Institute of Psychology, Psychiatry and Neuroscience, King's College London, UK
6. NIHR Maudsley Biomedical Research Centre, King's College London, UK
7. Department of Psychology, Northwestern University, Evanston, IL, USA
8. Institute for Policy Research, Northwestern University, Evanston, IL, USA
9. The Family Institute at Northwestern University, Evanston, IL, USA
10. Department of Psychiatry and Biobehavioral Sciences, University of California, Los Angeles (UCLA), Los Angeles, CA, USA

Corresponding author:
Benjamin M. Rosenberg, MA, CPhil
Department of Psychology
1285 Franz Hall
University of California, Los Angeles (UCLA)
Los Angeles, CA 90095-1563
Phone: (+1) 408-306-8603
Email: ben.rosenberg@g.ucla.edu

Running title: MVPA decoder of anhedonia during fear extinction

Keywords: fMRI, MVPA, fear learning, extinction, anhedonia, anxiety, depression

ABSTRACT:

BACKGROUND: Pavlovian learning processes are central to the etiology and treatment of anxiety disorders. Anhedonia and related perturbations in reward processes have been implicated in Pavlovian learning. Associations between anhedonia symptoms and neural indices of Pavlovian learning can inform transdiagnostic associations among depressive and anxiety disorders.

METHODS: Participants ages 18-19 (67% female) completed a fear extinction (n=254) and recall (n=249) paradigm during functional MRI. Symptom dimensions of General Distress (common to anxiety and depression), Fears (more specific to anxiety), and Anhedonia-Apprehension (more specific to depression) were evaluated. We trained whole-brain multivoxel pattern decoders for Anhedonia-Apprehension during extinction and extinction recall and tested the decoders' ability to predict Anhedonia-Apprehension in an external validation sample. Specificity analyses examined effects covarying for General Distress and Fears. Decoding was repeated within canonical brain networks to highlight candidate neurocircuitry underlying whole-brain effects.

RESULTS: Whole-brain decoder training succeeded during both tasks. Prediction of Anhedonia-Apprehension in the external validation sample was successful for extinction ($R^2=0.047$; $r=.276$, $p=.002$) but not extinction recall ($R^2<.001$, $r=-.063$, $p=.492$). The extinction decoder remained significantly associated with Anhedonia-Apprehension covarying for Fears and General Distress ($t(121)= 3.209$, $p=.002$). Exploratory results highlighted activity in the Cognitive Control, Default-Mode, Limbic, Salience and Visual networks related to these effects.

CONCLUSIONS: Results suggest that patterns of brain activity during extinction, particularly in the Cognitive Control, Default-Mode, Limbic, Salience, and Visual networks, can be predictive

of anhedonia symptoms. Future research should examine associations between anhedonia and extinction, including studies of exposure therapy or positive affect treatments among anhedonic individuals.

Journal Pre-proof

INTRODUCTION:

Anhedonia, the loss of interest or pleasure in activities, is a symptom dimension commonly associated with major depression but also relevant to anxiety disorders. Extant research has focused largely on reward-related processes in relation to anhedonia, such as reductions in sensitivity to reward (i.e., reward consumption, or “liking”) (1-4), motivation to pursue rewards (i.e., reward anticipation, or “wanting”), and dopaminergic prediction error signaling associated with impairments in capacity to update behavior following reinforcement learning (5-8). The current study extends beyond reward processes to address threat-related processes in relation to anhedonia.

A common paradigm for measuring threat-related processes is Pavlovian fear learning. Activation of the insular cortex, dorsal anterior cingulate cortex (dACC), amygdala (9) and other regions such as the ventromedial prefrontal cortex (vmPFC), has been consistently highlighted in neuroimaging studies of fear learning (10-15), although there are inconsistencies regarding the precise role of the amygdala in human studies (9, 13). Behavioral and neural aberrations in Pavlovian fear acquisition and particularly fear extinction have been observed in individuals at risk for and with anxiety disorders, including perturbations in the insular cortex, dACC, amygdala, and vmPFC (16-18). Beyond the typical threat neurocircuitry, fear extinction has been shown to rely on dopaminergic “reward” pathways in 1) signaling the unexpected omission of an aversive unconditional stimulus (19, 20), or relief, which may itself be considered a type of reward (21), and 2) supporting the long-term consolidation of extinction memories (22). Since anhedonia has been associated with reductions in dopaminergic prediction error signaling, classically evaluated within reward learning paradigms (3, 23), there is reason to hypothesize that anhedonia influences reward pathways involved in fear extinction. In partial support,

behavioral studies show an association between low positive affect (a central feature of anhedonia) and less stable long-term fear extinction, as measured by stronger reacquisition (24) and reinstatement (25) of conditioned fear.

We previously found more direct support for the role of anhedonia in neural responses during fear extinction (9). Specifically, we utilized a dimensional model of symptoms of anxiety and depression (tri-level model) within a regions-of-interest analytical framework and found that the dimension of Anhedonia-Apprehension, but not dimensions of General Distress or Fears, was associated with increased activation of several brain regions during extinction learning, including the insular cortex, dorsal anterior cingulate cortex (dACC), and amygdala (9). Notably, these regions overlap with the Salience network, where aberrations as a function of anhedonia have been found in studies of reward consumption, anticipation, and decision making (2, 26).

Neural processes associated with anhedonia extend beyond the Salience network to regions of the Limbic (e.g., ventral striatum and hippocampus) and Cognitive Control (e.g., orbitofrontal cortex, dorsolateral prefrontal cortex) networks (26, 27). Regions of the Default-Mode network (e.g., medial prefrontal cortex, posterior cingulate cortex) are thought to play a central role in the self-referential processes characteristic of depressive disorders (28-30) and may relate to anhedonia symptoms, as well. Given the wide range of brain systems associated with anhedonia, it is conceivable that the influences of anhedonia upon fear extinction extend beyond regions of the traditional “fear network.” The present study built upon the prior study (9) by 1) analyzing patterns of brain activity during fear extinction and recall to *predict* individual differences in anhedonia, and 2) addressing the breadth of brain activity associated with anhedonia during fear learning and specifically fear extinction, beyond the “fear network.”

One approach to neuroimaging data, multivoxel pattern analysis (MVPA), is particularly well-suited to research in novel areas and may aid efforts to uncover associations between anhedonia and fear extinction. MVPA uses machine learning to “decode” patterns of brain activity that are consistently associated with a specific psychological construct. Unique strengths of this approach include its 1) emphasis on distributed patterns of brain activity rather than evaluating individual brain areas separately, 2) ability to directly test these patterns by predicting symptoms in an external validation sample, and 3) flexibility to detect unexpected associations by combining the predictive strengths of different features (which individually may not be strong enough to reach significance). MVPA has been widely employed in clinical neuroscience (31, 32), including studies identifying patterns of brain activity associated with disruptions in Pavlovian fear learning (33), indices of subjective fear and physiological arousal (34), and anxious compared with non-anxious subjects during Pavlovian fear learning (35).

The present study aimed to uncover patterns of brain activity associated with anhedonia by decoding anhedonia symptoms using extinction (n=254) and extinction recall (n=249) fMRI data collected across two study sites. These tasks were selected due to prior evidence of neural associations with anhedonia within this dataset (9), as well as known associations between anhedonia and prediction error signaling, a process central to the extinction of learned fear. We hypothesized that the decoders would train successfully during both task phases, and that the decoded patterns of brain activity would generalize to an external validation sample (i.e., data that were not included decoder training). We further hypothesized that successful decoders would be specific to Anhedonia-Apprehension, over and above other Tri-Level transdiagnostic symptom factors (i.e., General Distress or Fears). Exploratory analyses repeated the decoding approach by training and validating the decoder 1) between study sites (i.e., training within data

from one site and generalizing to the other), as well as 2) within individual brain networks, highlighting candidate brain circuits that may be central to decoder results and warrant further research.

METHODS AND MATERIALS:

Participants

As described previously (9), participants were recruited for the Brain, Motivation and Personality Development (BrainMAPD) study at the University of California, Los Angeles and Northwestern University, which investigated depression and anxiety in late adolescence and early adulthood. Participants were 272 individuals aged 18-19 years (182 female, mean age=19.16 years, SD=0.52). Recruitment was based upon self-reported scores of trait Neuroticism (36), and Reward Sensitivity (37). Oversampling on these dimensions was employed to ensure that the sample included individuals at risk for the onset of depression and anxiety (see Supplement). Exclusion criteria were: lack of right-handed dominance, not fluent in English, traumatic brain injury, MRI contraindications, pregnancy, color blindness, lifetime psychotic symptoms, bipolar I disorder, clinically significant substance use disorder in the past 6 months, and antipsychotic medication usage.

Of this group n=254 (UCLA=116, NU=138) are included for fear extinction and n=249 (UCLA=116, NU=133) are included for extinction recall (see Supplement for exclusion details). Of the 254 participants, 250 participants completed SCID-5 interviews, of whom 79 participants (31.60%) met criteria for a current anxiety disorder, but no depressive disorder; 19 (7.60%) met criteria for current anxiety and depressive disorders; and three (1.20%) met criteria for a depressive disorder but no anxiety disorder. 20 participants (8.00%) reported current use of at

least one psychotropic medication (see Supplement for details). All participants provided written, informed consent. Participant demographics and tri-level symptoms are summarized in Table 1.

Tri-level measures of general distress, fear and anhedonia-apprehension

Immediately prior to MRI scans, participants completed questionnaire measures of anxiety and depression to generate hierarchical Tri-Level model factor scores for General Distress, Fear, and Anhedonia-Apprehension (see Supplement for details).

Fear Acquisition, Extinction, Extinction Recall

The two-day procedure for fear acquisition, extinction, and extinction recall was based on the validated paradigm developed by Milad and colleagues (38, 39). As described previously (9), this slow event-related fMRI paradigm consisted of four phases: habituation, acquisition, extinction (all conducted on day one) and extinction recall (conducted on day two, 1-7 days later) (see Supplement for details). Images were office or conference rooms (context) with different colored lights (red/yellow/blue) as CS stimuli (color order and context images were counterbalanced across participants). During all task phases, inter-trial intervals varied from 12-18sec (mean 15sec) and included a jitter of 125ms per trial to reduce slice timing bias. The task was programmed in E-Prime (version 2.0 SP1) and presented to participants using a mirror and projector system.

fMRI Acquisition and Analysis

We used identical Siemens Prisma 3 Tesla MRI scanners at the UCLA Ahmanson-Lovelace Brain Mapping Center and the Northwestern University Center for Translational Imaging. High resolution structural (T1-weighted) images and blood oxygenation level-dependent (BOLD, T2*-weighted) functional images were acquired and preprocessing procedures applied (see Supplement for details).

As has been done in prior fMRI studies of fear extinction and extinction recall (35, 40, 41), analyses specifically focused on the end of fear extinction (i.e., the final four trials CS+E minus the final four trials CS-) and the beginning of extinction recall (i.e., the first four trials CS+E minus the first four trials CS-). Functional images were masked using a standard MNI template (42). MVPA was implemented in the SciKit-Learn toolbox (43) using the ElasticNetCV function (see Supplement and Table S1 for parameters evaluated during the training stage). Subjects were randomized into the training and testing datasets, yielding a training sample of $n=127$ subjects (UCLA=58, NU=69) and a testing sample of $n=127$ subjects (UCLA=58, NU=69) for the extinction task. Five subjects were not included in the extinction recall analysis, yielding a training sample of $n=127$ subjects (UCLA=58, NU=69) and a testing sample of $n=122$ subjects (UCLA=58, NU=64). Within the testing sample, whole-brain decoders yielded brain-predicted Anhedonia-Apprehension values for each participant. The coefficient of determination (R^2) and correlation coefficient (r) were calculated between Anhedonia-Apprehension and brain-predicted Anhedonia-Apprehension values to determine successful prediction of scores in the external validation sample. To determine the R^2 cutoff score corresponding with statistical significance ($p<.05$), Anhedonia-Apprehension scores were permuted 10,000 times and R^2 was computed for each permutation.

Motion Outliers

To account for confounds due to motion, analyses tested the association between the percent of fMRI volumes censored due to motion (see Supplement) and Anhedonia-Apprehension as well as brain-predicted Anhedonia-Apprehension values in the training sample (covarying for Fears, General Distress, and Site). The percent of volumes censored due to motion was also included as a covariate in specificity analyses (see below).

Specificity Analysis: Associations over and above General Distress, Fears, Site, and Motion

Within the external validation sample, the correlation coefficient (r) was first computed separately between brain-predicted Anhedonia-Apprehension and each of the Tri-Level factors (Anhedonia-Apprehension, Fears, and General Distress), covarying for Site and Motion. The correlation coefficient was then calculated between brain-predicted Anhedonia-Apprehension and Anhedonia-Apprehension, covarying for Fears, General Distress, Site, and Motion.

Exploratory Analyses: Network-by-Network Effects

To explore localization of the decoder effects, we used the brain atlas developed by Schaefer and colleagues to divide the brain into 100 parcels, grouped into seven functional brain networks (Cognitive Control, Dorsal Attention, Default-Mode, Limbic, Salience, Somatomotor, Visual) (44, 45). We then re-ran the decoding procedure seven times, masking within each network. Among significant networks, we additionally re-ran the decoding procedure masking within each individual region of the network.

Exploratory Analyses: Testing Between-Site Decoding of Anhedonia-Apprehension

To explore the robustness of decoder effects, we re-ran significant decoders utilizing a between-sites external validation approach (see Supplement). Decoder training was completed within the NU cohort ($n=138$) and validation was completed within the UCLA cohort ($n=116$). R^2 and r were calculated between Anhedonia-Apprehension and brain-predicted Anhedonia-Apprehension values to determine successful prediction of data within the external validation sample. We then re-ran the decoding procedure seven times, masking within each network, as described above.

RESULTS***Whole-Brain Decoder Effects***

Permutation testing yielded a significance cutoff of $R^2=.0186$ for external validation (corresponding with two-tailed $p<.05$). Initial training of the whole-brain decoder during fear extinction was successful, such that the decoder predicted Anhedonia-Apprehension values ($R^2=.168$). The extinction decoder significantly predicted Anhedonia-Apprehension values in the external validation sample ($R^2=.047$; $r=.276$, $p=.002$) (Fig. 1).

Initial training of the whole-brain decoder during extinction recall was successful, such that the decoder predicted Anhedonia-Apprehension values ($R^2=.336$). However, the extinction recall decoder did not significantly predict Anhedonia-Apprehension values in the external validation sample ($R^2<.001$, $r=-.063$, $p=.492$). Therefore, the extinction recall decoder was not evaluated in subsequent analyses.

Motion Outliers

Covarying for Fears, General Distress, and Site, there was a significant association between percent of volumes censored and Anhedonia-Apprehension ($t(249)=-2.059$, $p=.041$, $r=0.130$), such that individuals with greater anhedonia tended to exhibit less movement in the MRI scanner. Covarying for Fears, General Distress, and Site, there was no association between percent of volumes censored and brain-predicted Anhedonia-Apprehension values within the training sample ($t(122)=-1.277$, $p=.204$, $r=0.115$) or the testing sample ($t(122)=0.016$, $p=.987$, $r=.002$).

Specificity Analysis: Associations over and above General Distress, Fears, Site, and Motion

Covarying for Site and Motion, brain-predicted Anhedonia-Apprehension was significantly associated with Anhedonia-Apprehension ($t(123)=3.192$, $p=.002$, $r=0.274$), but not Fears ($t(123)=0.660$, $p=.511$, $r=0.060$) or General Distress ($t(123)=0.338$, $p=.736$, $r=0.031$). Covarying for Fears, General Distress, Site, and Motion, brain-predicted Anhedonia-

Apprehension was significantly associated with Anhedonia-Apprehension ($t(121)=3.209$, $p=.002$, $r=0.277$).

Exploratory Analyses: Network-by-Network Effects

Exploratory analyses demonstrated that the following network-masked decoders significantly predicted Anhedonia-Apprehension within the external validation sample: Cognitive Control ($R^2=.020$; $r=.245$, $p=.006$), Default-Mode ($R^2=.040$; $r=.263$, $p=.003$), Limbic ($R^2=.029$; $r=.217$, $p=.014$), and Visual ($R^2=.022$; $r=.181$, $p=.042$) (see Fig. 2, Fig. S1, and Table 2 for details). The Salience decoder met criteria for significance using r , but not R^2 , as the metric of external validation ($R^2=.004$; $r=.229$, $p=.010$). Exploratory analyses within these networks further demonstrated that several region-specific decoders could significantly predict Anhedonia-Apprehension (see Table 3 for details).

Exploratory Analyses: Decoding of Anhedonia-Apprehension with a Between-Sites Approach

Initial training of the whole-brain decoder during fear extinction was successful ($R^2=.420$; see Supplement for details). The between-sites decoder met criteria for significance using r , but not R^2 , as the metric of external validation ($R^2=-.024$; $r=.190$, $p=.040$). Specificity analyses revealed that, utilizing the between-sites approach, the Dorsal Attention ($R^2=-.025$; $r=.186$, $p=.045$) and Visual ($R^2=-.015$; $r=.236$, $p=.011$) network-decoders met criteria for significance using r , but not R^2 , as the metric of external validation (see Supplement for details).

DISCUSSION:

The present study utilized MVPA to characterize unique patterns of functional brain activity during fear extinction and extinction recall associated with anhedonia symptoms. We found anhedonia-specific whole-brain patterns of functional activity during fear extinction that generalized to an external validation sample. Importantly, these patterns were significantly

associated with the dimension of Anhedonia-Apprehension over and above other symptom dimensions of General Distress and Fears.

Within individual networks and regions, the patterns of activity appeared complex. Although plotting the decoder weights can aid in the interpretation of which regions and networks are implicated in the whole-brain decoder, these results should be interpreted with caution. For example, high beta weights could indicate voxels that cancel out noise, rather than increased activation. Similarly, if two voxels provide an equivalent amount of information, the decoder may arbitrarily select one voxel and omit the other (for additional information on interpreting decoder results, see 46). Hence, exploration of specific brain networks implicated in the anhedonia decoder is highly tentative. With that caveat in mind, we identified activity within the Cognitive Control, Default-Mode, Limbic, Salience, and Visual networks that generalized across the training and external validation samples.

The Anhedonia-Apprehension decoder appeared to involve predominantly positive beta weights among regions of the Salience network. Regions of the Salience network, such as the insular cortex, dACC, and amygdala, overlap with the “fear network” (9, 13). One interpretation of heightened activation in the Salience network is persistent attentional salience of extinguished stimuli, perhaps representing strength of CS-US associations (i.e., weakened extinction). Additional research is needed to explore this possibility particularly considering the limited interpretability of directional findings in MVPA analyses. Likewise, it has been suggested that the Salience network integrates information from both the Default-Mode and Cognitive Control networks in directing external and internal attention (47-49), and that this process is altered in major depression (50, 51). Additional research may explore the extent to which persistent

activation among regions of the Cognitive Control or Default-Mode networks, in coordination with the Salience network, relates to deficits in extinction associated with anhedonia.

Another potential pattern was for the Anhedonia-Apprehension decoder to involve predominantly heightened activity within the Cognitive Control network. Prior studies of major depression have highlighted aberrant activity in this network, particularly the dorsolateral prefrontal cortex (DLPFC), in studies of attentional bias and emotion regulation (52-54). Heightened DLPFC activation has been implicated as compensation for diminished reward processing as a function of depression (26) and transdiagnostically (55), and thus offers another pathway for the relationship between anhedonia and extinction.

Furthermore, the Anhedonia-Apprehension decoder appeared to involve predominantly positive beta weights among regions of the Default-Mode network. Hyperactivation and hyperconnectivity of the Default-Mode network have been implicated in studies of depression, particularly during unconstrained rest or during tasks involving internally directed attention, such as autobiographical memory and rumination (28-30, 51). The present results support the potential applicability of the Default-Mode network within studies of anhedonia or extinction learning, although additional research is needed to elucidate these associations more precisely.

The current findings highlight the role of anhedonia in relation to fear learning constructs that have been traditionally considered primarily within the context of anxiety disorders. Although anhedonia has been considered mostly within the context of depression, it is transdiagnostic and associated with several anxiety disorders including social anxiety (57), obsessive-compulsive disorder (58), and posttraumatic stress (59). Greater recognition of the role of anhedonia in anxiety disorders and fear learning processes is consistent with dimensional models of psychopathology that cut across conventional diagnostic categories (60-67) and have

direct implications for optimal care (68, 69). Pending replication of the current findings, the role of anhedonia in fear learning could be leveraged in the development of personalized, process-targeted treatments. For example, studies of fear extinction have provided a foundation for contemporary models of exposure therapy (70-72), which emphasize prediction error (and other features, such as contextual modulation) for optimizing exposure therapy effectiveness (18, 73-75). Given the potential interference with prediction error posed by anhedonia, novel exposure protocols may incorporate interventions to increase positive affect already shown to augment extinction (76, 77), for anxious individuals with anhedonic symptoms.

Additionally, neuromodulation targeting the control, default-mode, or salience networks may augment exposure therapy for individuals with anhedonia. For example, preliminary studies of transcranial magnetic stimulation have targeted the dorsolateral prefrontal cortex to augment the effects of exposure therapy for posttraumatic stress disorder (78-80). Combining brain stimulation and exposure therapy may prove particularly useful for anxious patients who present with elevated anhedonia or a comorbid depressive disorder.

Decoder cross-validation was associated with relatively small coefficient of determination (R^2) values in the present study. Despite the potential advantages of R^2 in prediction studies (56), the application of R^2 in MVPA studies may also be limited due to scaling issues. For example, the present study collected data at two different fMRI scanners, which could affect the R^2 metric. For this reason, we have also reported correlation coefficients (r), which are relatively independent of the scale used and tended to indicate stronger associations between anhedonia and brain activation.

The current study involves several strengths, namely the 1) comparatively large sample size of both the training and external validation datasets, 2) emphasis on dimensional

psychopathology, 3) test of effects in an external validation sample, and 4) exploration of effects using a between-sites approach. The narrow age range of participants could also be considered a strength of the present study, as the reported effects are unlikely to be explained by variations in the age of participants. However, the narrow age range may also reduce generalizability of these results to other developmental stages. Additional limitations include the 1) small number of experimental trials analyzed in the extinction and extinction recall tasks, 2) exploratory nature of network- and region-specific analyses, including some cases in which r but not R^2 met criteria for statistical significance, 3) comparatively small size of decoder prediction values, and 4) tentative interpretability of directional results. Future research is needed to replicate the findings of the present study, to explore avenues for strengthening decoder predictions, and to evaluate the directionality of network- and region-specific results.

In sum, the present study suggests that patterns of brain activity during extinction learning are predictive of anhedonia symptoms. Extinction is a fear learning process traditionally considered in relation to anxiety symptoms but rarely in relation to transdiagnostic symptom dimensions, such as anhedonia. The patterns of brain activity identified in this study may be characteristic of anhedonia-specific deficits during fear learning and warrant additional research.

ACKNOWLEDGEMENTS:

This research was supported by a grant from the National Institute of Mental Health (NIMH) to M. G. Craske, R. Nusslock, and R. E. Zinbarg (R01 MH100117-01). The content is the responsibility of the authors and does not necessarily represent the official views of the NIMH. Author B. M. Rosenberg was supported by the National Science Foundation Graduate Research Fellowship (DGE-1650604) during the completion of this work.

Journal Pre-proof

DISCLOSURES:

The authors declare that they have no biomedical financial interests or potential conflicts of interest.

Journal Pre-proof

REFERENCES:

1. Berridge, K. C., & Robinson, T. E. (2003). Parsing reward. *Trends in neurosciences*, 26(9), 507-513.
2. Treadway, M. T., & Zald, D. H. (2011). Reconsidering anhedonia in depression: lessons from translational neuroscience. *Neuroscience & biobehavioral reviews*, 35(3), 537-555.
3. Huys, Q. J., Pizzagalli, D. A., Bogdan, R., & Dayan, P. (2013). Mapping anhedonia onto reinforcement learning: a behavioural meta-analysis. *Biology of mood & anxiety disorders*, 3(1), 1-16.
4. Rømer Thomsen, K. (2015). Measuring anhedonia: impaired ability to pursue, experience, and learn about reward. *Frontiers in psychology*, 6, 1409.
5. Kumar, P., Waiter, G., Ahearn, T., Milders, M., Reid, I., & Steele, J. D. (2008). Abnormal temporal difference reward-learning signals in major depression. *Brain*, 131(8), 2084-2093.
6. Pizzagalli, D. A., Iosifescu, D., Hallett, L. A., Ratner, K. G., & Fava, M. (2008). Reduced hedonic capacity in major depressive disorder: evidence from a probabilistic reward task. *Journal of psychiatric research*, 43(1), 76-87.
7. Gradin, V. B., Kumar, P., Waiter, G., Ahearn, T., Stickle, C., Milders, M., ... & Steele, J. D. (2011). Expected value and prediction error abnormalities in depression and schizophrenia. *Brain*, 134(6), 1751-1764.
8. Pizzagalli, D. A. (2014). Depression, stress, and anhedonia: toward a synthesis and integrated model. *Annual review of clinical psychology*, 10, 393-423.
9. Young, K. S., Bookheimer, S. Y., Nusslock, R., Zinbarg, R. E., Damme, K. S. F., Chat, I. K., Kelley, N. J., Vinograd, M., Perez, M., Chen, K., Echiverri-Cohen, A., Craske, M.G.

- (2021). Dysregulation of threat neurocircuitry during fear extinction: the role of anhedonia. *Neuropsychopharmacology*, 1-8.
10. Etkin, A., & Wager, T. D. (2007). Functional neuroimaging of anxiety: a meta-analysis of emotional processing in PTSD, social anxiety disorder, and specific phobia. *American journal of psychiatry*, *164*(10), 1476-1488.
 11. Sehlmeier, C., Schöning, S., Zwitserlood, P., Pfleiderer, B., Kircher, T., Arolt, V., & Konrad, C. (2009). Human fear conditioning and extinction in neuroimaging: a systematic review. *PloS one*, *4*(6), e5865.
 12. Milad, M. R., Rosenbaum, B. L., & Simon, N. M. (2014). Neuroscience of fear extinction: implications for assessment and treatment of fear-based and anxiety related disorders. *Behaviour research and therapy*, *62*, 17-23.
 13. Fullana, M. A., Harrison, B. J., Soriano-Mas, C., Vervliet, B., Cardoner, N., Àvila-Parcet, A., & Radua, J. (2016). Neural signatures of human fear conditioning: an updated and extended meta-analysis of fMRI studies. *Molecular psychiatry*, *21*(4), 500-508.
 14. Greco, J. A., & Liberzon, I. (2016). Neuroimaging of fear-associated learning. *Neuropsychopharmacology*, *41*(1), 320-334.
 15. Battaglia, S., Garofalo, S., di Pellegrino, G., & Starita, F. (2020). Revaluing the role of vmPFC in the acquisition of Pavlovian threat conditioning in humans. *Journal of neuroscience*, *40*(44), 8491-8500.
 16. Graham, B. M., & Milad, M. R. (2011). The study of fear extinction: implications for anxiety disorders. *American journal of psychiatry*, *168*(12), 1255-1265.
 17. Craske, M. G., Stein, M. B., Eley, T. C., Milad, M. R., Holmes, A., Rapee, R. M., & Wittchen, H. U. (2017). Anxiety disorders. *Nature reviews. Disease primers*, *3*, 17024.

18. Craske, M. G., Hermans, D., & Vervliet, B. (2018). State-of-the-art and future directions for extinction as a translational model for fear and anxiety. *Philosophical transactions of the Royal Society of London. Series B, Biological sciences*, 373(1742), 20170025.
19. Salinas-Hernández, X. I., Vogel, P., Betz, S., Kalisch, R., Sigurdsson, T., & Duvarci, S. (2018). Dopamine neurons drive fear extinction learning by signaling the omission of expected aversive outcomes. *Elife*, 7, e38818.
20. Papalini, S., Beckers, T., & Vervliet, B. (2020). Dopamine: from prediction error to psychotherapy. *Translational psychiatry*, 10(1), 1-13.
21. Carver, C.S. (2009). Threat sensitivity, incentive sensitivity, and the experience of relief. *Journal of personality*. 77(1), 125-38.
22. Kalisch, R., Gerlicher, A. M., & Duvarci, S. (2019). A dopaminergic basis for fear extinction. *Trends in cognitive sciences*, 23(4), 274-277.
23. Rizvi, S. J., Pizzagalli, D. A., Sproule, B. A., & Kennedy, S. H. (2016). Assessing anhedonia in depression: Potentials and pitfalls. *Neuroscience & biobehavioral reviews*, 65, 21-35.
24. Zbozinek, T. D., & Craske, M. G. (2017). Positive affect predicts less reacquisition of fear: relevance for long-term outcomes of exposure therapy. *Cognition and emotion*, 31(4), 712-725.
25. Zbozinek, T. D., Holmes, E. A., & Craske, M. G. (2015). The effect of positive mood induction on reducing reinstatement fear: Relevance for long term outcomes of exposure therapy. *Behaviour research and therapy*, 71, 65-75.
26. Zhang, W. N., Chang, S. H., Guo, L. Y., Zhang, K. L., & Wang, J. (2013). The neural correlates of reward-related processing in major depressive disorder: a meta-analysis of

- functional magnetic resonance imaging studies. *Journal of affective disorders*, 151(2), 531-539.
27. Drevets, W. C. (2007). Orbitofrontal cortex function and structure in depression. *Annals of the New York Academy of Sciences*, 1121(1), 499-527.
28. Sheline, Y. I., Barch, D. M., Price, J. L., Rundle, M. M., Vaishnavi, S. N., Snyder, A. Z., ... & Raichle, M. E. (2009). The default mode network and self-referential processes in depression. *Proceedings of the National Academy of Sciences*, 106(6), 1942-1947.
29. Hamilton, J. P., Farmer, M., Fogelman, P., & Gotlib, I. H. (2015). Depressive rumination, the default-mode network, and the dark matter of clinical neuroscience. *Biological psychiatry*, 78(4), 224-230.
30. Zhou, H. X., Chen, X., Shen, Y. Q., Li, L., Chen, N. X., Zhu, Z. C., ... & Yan, C. G. (2020). Rumination and the default mode network: Meta-analysis of brain imaging studies and implications for depression. *Neuroimage*, 206, 116287.
31. Dwyer, D. B., Falkai, P., & Koutsouleris, N. (2018). Machine learning approaches for clinical psychology and psychiatry. *Annual review of clinical psychology*, 14, 91-118.
32. Zhang, X., Braun, U., Tost, H., & Bassett, D. S. (2020). Data-Driven Approaches to Neuroimaging Analysis to Enhance Psychiatric Diagnosis and Therapy. *Biological psychiatry: cognitive neuroscience and neuroimaging*, 5(8), 780-790.
33. Hennings, A. C., McClay, M., Lewis-Peacock, J. A., & Dunsmoor, J. E. (2020). Contextual reinstatement promotes extinction generalization in healthy adults but not PTSD. *Neuropsychologia*, 147, 107573.

34. Taschereau-Dumouchel, V., Kawato, M., & Lau, H. (2019). Multivoxel pattern analysis reveals dissociations between subjective fear and its physiological correlates. *Molecular psychiatry*, 1-13.
35. Wen, Z., Marin, M. F., Blackford, J. U., Chen, Z. S., & Milad, M. R. (2021). Fear-induced brain activations distinguish anxious and trauma-exposed brains. *Translational psychiatry*, 11(1), 1-10.
36. Eysenck, H. J., & Eysenck, S. B. G. (1975). Manual of the Eysenck Personality Questionnaire (Junior and Adult). Hodder & Stoughton.
37. Carver, C. S., & White, T. L. (1994). Behavioral inhibition, behavioral activation, and affective responses to impending reward and punishment: the BIS/BAS scales. *Journal of personality and social psychology*, 67(2), 319-333. DOI:10.1037/0022-3514.67.2.319
38. Milad, M. R., Quirk, G. J., Pitman, R. K., Orr, S. P., Fischl, B., & Rauch, S. L. (2007). A role for the human dorsal anterior cingulate cortex in fear expression. *Biological psychiatry*, 62(10), 1191-1194.
39. Milad, M. R., Wright, C. I., Orr, S. P., Pitman, R. K., Quirk, G. J., & Rauch, S. L. (2007). Recall of fear extinction in humans activates the ventromedial prefrontal cortex and hippocampus in concert. *Biological psychiatry*, 62(5), 446-454.
40. Marin, M. F., Zsido, R. G., Song, H., Lasko, N. B., Killgore, W. D., Rauch, S. L., ... & Milad, M. R. (2017). Skin conductance responses and neural activations during fear conditioning and extinction recall across anxiety disorders. *JAMA psychiatry*, 74(6), 622-631.

41. Marin, M. F., Hammoud, M. Z., Klumpp, H., Simon, N. M., & Milad, M. R. (2020). Multimodal categorical and dimensional approaches to understanding threat conditioning and its extinction in individuals with anxiety disorders. *JAMA psychiatry*, 77(6), 618-627.
42. Mazziotta, J., Toga, A., Evans, A., Fox, P., Lancaster, J., Zilles, K., ... & Mazoyer, B. (2001). A probabilistic atlas and reference system for the human brain: International Consortium for Brain Mapping (ICBM). *Philosophical transactions of the Royal Society of London. Series B: Biological sciences*, 356(1412), 1293-1322.
43. Pedregosa, F., Varoquaux, G., Gramfort, A., Michel, V., Thirion, B., Grisel, O., ... & Vanderplas, J. (2011). Scikit-learn: Machine learning in Python. *The journal of machine learning research*, 12, 2825-2830.
44. Yeo, B. T., Krienen, F. M., Sepulcre, J., Sabuncu, M. R., Lashkari, D., Hollinshead, M., ... & Fischl, B. (2011). The organization of the human cerebral cortex estimated by intrinsic functional connectivity. *Journal of neurophysiology*, 106(3), 1125-1165.
45. Schaefer, A., Kong, R., Gordon, E. M., Laumann, T. O., Zuo, X. N., Holmes, A. J., ... & Yeo, B. T. (2018). Local-global parcellation of the human cerebral cortex from intrinsic functional connectivity MRI. *Cerebral cortex*, 28(9), 3095-3114.
46. Kriegeskorte, N., & Douglas, P. K. (2019). Interpreting encoding and decoding models. *Current opinion in neurobiology*, 55, 167-179.
47. Sridharan, D., Levitin, D. J., & Menon, V. (2008). A critical role for the right fronto-insular cortex in switching between central-executive and default-mode networks. *Proceedings of the National Academy of Sciences*, 105(34), 12569-12574.
48. Menon, V., & Uddin, L. Q. (2010). Saliency, switching, attention and control: a network model of insula function. *Brain structure and function*, 214(5-6), 655-667.

49. Goulden, N., Khusnulina, A., Davis, N. J., Bracewell, R. M., Bokde, A. L., McNulty, J. P., & Mullins, P. G. (2014). The salience network is responsible for switching between the default mode network and the central executive network: replication from DCM. *Neuroimage*, 99, 180-190.
50. Hamilton, J. P., Furman, D. J., Chang, C., Thomason, M. E., Dennis, E., & Gotlib, I. H. (2011). Default-mode and task-positive network activity in major depressive disorder: implications for adaptive and maladaptive rumination. *Biological psychiatry*, 70(4), 327-333.
51. Kaiser, R. H., Andrews-Hanna, J. R., Wager, T. D., & Pizzagalli, D. A. (2015). Large-scale network dysfunction in major depressive disorder: a meta-analysis of resting-state functional connectivity. *JAMA psychiatry*, 72(6), 603-611.
52. Gotlib, I. H., & Hamilton, J. P. (2008). Neuroimaging and depression: Current status and unresolved issues. *Current directions in psychological science*, 17(2), 159-163.
53. Koenigs, M., & Grafman, J. (2009). The functional neuroanatomy of depression: distinct roles for ventromedial and dorsolateral prefrontal cortex. *Behavioural brain research*, 201(2), 239-243.
54. Disner, S. G., Beevers, C. G., Haigh, E. A., & Beck, A. T. (2011). Neural mechanisms of the cognitive model of depression. *Nature reviews neuroscience*, 12(8), 467-477.
55. Brolsma, S. C., Vassena, E., Vrijnsen, J. N., Sescousse, G., Collard, R. M., van Eijndhoven, P. F., ... & Cools, R. (2021). Negative learning bias in depression revisited: Enhanced neural response to surprising reward across psychiatric disorders. *Biological psychiatry: cognitive neuroscience and neuroimaging*, 6(3), 280-289.

56. Poldrack, R. A., Huckins, G., & Varoquaux, G. (2020). Establishment of best practices for evidence for prediction: a review. *JAMA psychiatry*, *77*(5), 534-540.
57. Kashdan, T. B. (2007). Social anxiety spectrum and diminished positive experiences: Theoretical synthesis and meta-analysis. *Clinical psychology review*, *27*(3), 348-365.
58. Abramovitch, A., Pizzagalli, D. A., Reuman, L., & Wilhelm, S. (2014). Anhedonia in obsessive-compulsive disorder: beyond comorbid depression. *Psychiatry research*, *216*(2), 223-229.
59. Nawijn, L., van Zuiden, M., Frijling, J. L., Koch, S. B., Veltman, D. J., & Olf, M. (2015). Reward functioning in PTSD: a systematic review exploring the mechanisms underlying anhedonia. *Neuroscience & biobehavioral reviews*, *51*, 189-204.
60. Krueger, R. F., Kotov, R., Watson, D., Forbes, M. K., Eaton, N. R., Ruggero, C. J., ... & Zimmermann, J. (2018). Progress in achieving quantitative classification of psychopathology. *World psychiatry*, *17*(3), 282-293.
61. Naragon-Gainey, K., Prenoveau, J. M., Brown, T. A., & Zinbarg, R. E. (2016). A comparison and integration of structural models of depression and anxiety in a clinical sample: Support for and validation of the tri-level model. *Journal of abnormal psychology*, *125*(7), 853.
62. Prenoveau, J. M., Zinbarg, R. E., Craske, M. G., Mineka, S., Griffith, J. W., & Epstein, A. M. (2010). Testing a hierarchical model of anxiety and depression in adolescents: A tri-level model. *Journal of anxiety disorders*, *24*(3), 334-344.
63. Brown, T. A., & Barlow, D. H. (2009). A proposal for a dimensional classification system based on the shared features of the DSM-IV anxiety and mood disorders: Implications for assessment and treatment. *Psychological assessment*, *21*(3), 256.

64. Insel, T. R. (2014). The NIMH research domain criteria (RDoC) project: precision medicine for psychiatry. *American journal of psychiatry*, *171*(4), 395-397.
65. Thompson- Hollands, J., Sauer- Zavala, S., & Barlow, D. H. (2014). CBT and the future of personalized treatment: a proposal. *Depression and anxiety*, *31*(11), 909-911.
66. Kotov, R., Krueger, R. F., Watson, D., Achenbach, T. M., Althoff, R. R., Bagby, R. M., ... & Eaton, N. R. (2017). The Hierarchical Taxonomy of Psychopathology (HiTOP): a dimensional alternative to traditional nosologies. *Journal of abnormal psychology*, *126*(4), 454.
67. Kotov, R., Krueger, R. F., & Watson, D. (2018). A paradigm shift in psychiatric classification: the Hierarchical Taxonomy Of Psychopathology (HiTOP). *World psychiatry*, *17*(1), 24.
68. Ruggero, C. J., Kotov, R., Hopwood, C. J., First, M., Clark, L. A., Skodol, A. E., ... & Zimmermann, J. (2019). Integrating the Hierarchical Taxonomy of Psychopathology (HiTOP) into clinical practice. *Journal of consulting and clinical psychology*, *87*(12), 1069.
69. Hopwood, C. J., Bagby, R. M., Gralnick, T., Ro, E., Ruggero, C., Mullins-Sweatt, S., ... & Zimmermann, J. (2020). Integrating psychotherapy with the hierarchical taxonomy of psychopathology (HiTOP). *Journal of psychotherapy integration*, *30*(4), 477.
70. Pittig, A., van den Berg, L., & Vervliet, B. (2016). The key role of extinction learning in anxiety disorders: behavioral strategies to enhance exposure-based treatments. *Current opinion in psychiatry*, *29*(1), 39-47.

71. Scheveneels, S., Boddez, Y., Vervliet, B., & Hermans, D. (2016). The validity of laboratory-based treatment research: Bridging the gap between fear extinction and exposure treatment. *Behaviour research and therapy*, 86, 87-94.
72. Fullana, M. A., Dunsmoor, J. E., Schruers, K. R. J., Savage, H. S., Bach, D. R., & Harrison, B. J. (2020). Human fear conditioning: From neuroscience to the clinic. *Behaviour research and therapy*, 124, 103528.
73. Craske, M. G., Kircanski, K., Zelikowsky, M., Mystkowski, J., Chowdhury, N., & Baker, A. (2008). Optimizing inhibitory learning during exposure therapy. *Behaviour research and therapy*, 46(1), 5-27.
74. Craske, M. G., Liao, B., Brown, L., & Vervliet, B. (2012). Role of inhibition in exposure therapy. *Journal of experimental psychopathology*, 3(3), 322-345.
75. Craske, M. G., Treanor, M., Conway, C. C., Zbozinek, T., & Vervliet, B. (2014). Maximizing exposure therapy: An inhibitory learning approach. *Behaviour research and therapy*, 58, 10-23.
76. Craske, M. G., Meuret, A. E., Ritz, T., Treanor, M., & Dour, H. J. (2016). Treatment for anhedonia: a neuroscience driven approach. *Depression and anxiety*, 33(10), 927-938.
77. Craske, M. G., Meuret, A. E., Ritz, T., Treanor, M., Dour, H., & Rosenfield, D. (2019). Positive affect treatment for depression and anxiety: A randomized clinical trial for a core feature of anhedonia. *Journal of Consulting and Clinical Psychology*, 87(5), 457.
78. Osuch, E. A., Benson, B. E., Luckenbaugh, D. A., Geraci, M., Post, R. M., & McCann, U. (2009). Repetitive TMS combined with exposure therapy for PTSD: a preliminary study. *Journal of anxiety disorders*, 23(1), 54-59.

79. Karsen, E. F., Watts, B. V., & Holtzheimer, P. E. (2014). Review of the effectiveness of transcranial magnetic stimulation for post-traumatic stress disorder. *Brain stimulation*, 7(2), 151-157.
80. Fryml, L. D., Pelic, C. G., Acierno, R., Tuerk, P., Yoder, M., Borckardt, J. J., ... & George, M. S. (2019). Exposure therapy and simultaneous repetitive transcranial magnetic stimulation: a controlled pilot trial for the treatment of posttraumatic stress disorder. *The journal of ECT*, 35(1), 53-60.

Journal Pre-proof

LEGENDS FOR TABLES AND FIGURES:

Table 1. *Demographics and symptom dimensions.*

Demographic factors and symptom dimension scores of participants compared across scanning site. The racial identity of individuals across sites was significantly different, with a higher proportion of Asian participants at UCLA and a higher proportion of Black and Multiracial participants at Northwestern University.

Table 2. *Network-by-network decoder results.*

Exploratory network-by-network decoder results implicated in the whole-brain decoder.

Table 3. *Region-by-region decoder results.*

Significant exploratory ROI-by-ROI decoder results within networks implicated in the whole-brain decoder (R = right hemisphere, L = left hemisphere, PFC = prefrontal cortex).

Figure 1. *Whole-brain decoder results.*

Weights of the whole-brain decoder are presented for illustration purpose only. They should not be interpreted as indicating involvement of a specific brain region (as is the case in mass-univariate analyses) (see Kriegeskorte & Douglas, 2019). Predicted Anhedonia-Apprehension values were significantly associated with Anhedonia-Apprehension in the external validation sample.

Figure 2. *Network-by-network decoder results.*

Decoder plots for individual network decoders that were significantly associated with Anhedonia-Apprehension in the external validation sample.

Journal Pre-proof

Table 1: *Demographics and symptom dimensions.*

Demographic factors and symptom dimension scores of participants compared across scanning site. The racial identity of individuals across sites was significantly different, with a higher proportion of Asian participants at UCLA and a higher proportion of Black and Multiracial participants at Northwestern University.

	UCLA	Northwestern	Statistic	<i>p</i> -value
N	116	138		
Sex (N, %)			$X^2 = 0.84$	0.656
Female	78 (67.24%)	92 (66.67%)		
Male	38 (32.76%)	45 (32.61%)		
Transgender	0 (0.0%)	1 (0.72%)		
Age (M, SD)	19.09 (0.52)	19.25 (0.52)	$t = 2.46^*$	0.014
Ethnicity			$X^2 = 1.23$	0.268
Not Hispanic/Latino	82 (70.69%)	106 (76.81%)		
Hispanic/Latino	34 (29.31%)	32 (23.19%)		
Race (N, %)			$X^2 = 20.67^*$	0.001
White	61 (52.59%)	77 (55.80%)		
Asian	45 (38.79%)	27 (19.57%)		
Black	5 (4.31%)	14 (10.14%)		
Native American	1 (0.86%)	3 (2.17%)		
Multiracial	3 (2.59%)	17 (12.32%)		
Declined to report	1 (0.86%)	0 (0.0%)		
Current psychotropic medication use (N, %)	2 (1.72%)	18 (13.04%)	$X^2 = 11.13^*$	0.001
Symptom dimension scores (M, SD)				
General Distress	-.032 (.94)	.128 (.89)	$t = 1.39$	0.17
Fears	.080 (.93)	-.115 (.79)	$t = 1.81$	0.07
Anhedonia-Apprehension	.112 (.84)	-.094 (.94)	$t = 1.82$	0.07

* Denotes statistical significance ($p < .05$)

Table 2: *Network-by-network decoder results.*

Exploratory network-by-network decoder results implicated in the whole-brain decoder.

Network Mask	Decoder Training	Testing in External Validation Sample		
	R^2	R^2	r	p
Cognitive Control	0.045	0.020*	0.245*	0.006
Default Mode	0.088	0.040*	0.263*	0.003
Dorsal Attention	0.271	0.008	0.140	0.116
Limbic	0.183	0.029*	0.217*	0.014
Saliency	0.020	0.004	0.229*	0.010
Somatomotor	<i>failed training</i>	<i>N/A</i>	<i>N/A</i>	<i>N/A</i>
Visual	0.155	0.022*	0.181*	0.042

* Denotes statistical significance ($R^2 > 0.0186$ or $p < .05$)

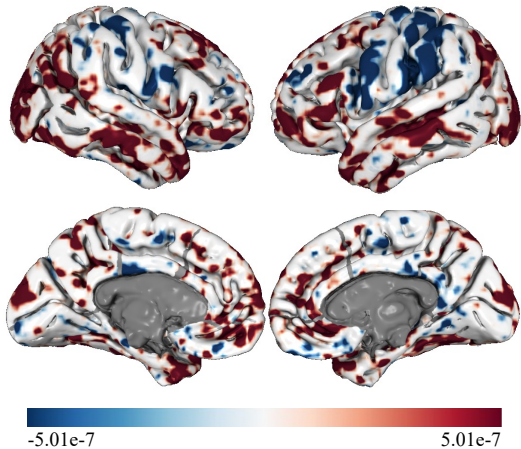
Table 3: *Region-by-region decoder results.*

Significant exploratory ROI-by-ROI decoder results within networks implicated in the whole-brain decoder (R = right hemisphere, L = left hemisphere, PFC = prefrontal cortex).

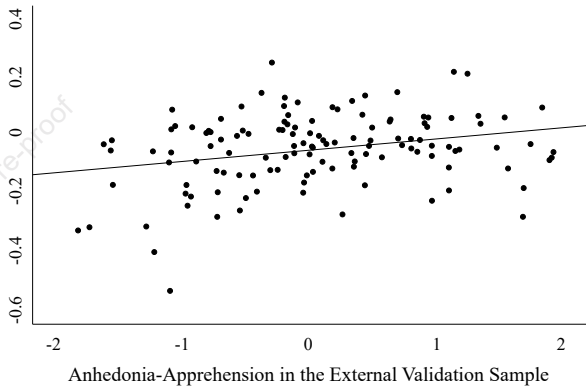
Regional Masks	Schaefer Atlas ROI Index	Testing in External Validation Sample		
		R ²	r	p
Cognitive Control Network				
L Dorsolateral PFC (Lateral)	35	0.016	0.267*	0.002
R Dorsolateral PFC(Anterior)	83	0.016	0.215*	0.015
R Dorsolateral PFC (Lateral)	84	0.017	0.249*	0.005
R Dorsolateral PFC (Dorsal)	85	0.026*	0.227*	0.010
R Frontal Eye Field	86	0.034*	0.250*	0.005
R Medial Posterior PFC / Frontal Eye Field	88	0.018	0.222*	0.012
Default-Mode Network				
L Medial Temporal Gyrus	38	0.013	0.177*	0.046
L Medial Temporal Gyrus	39	0.057*	0.299*	0.001
L Angular Gyrus	41	0.028*	0.210*	0.018
L Pars Orbitalis	42	0.014	0.290*	0.001
L Pars Orbitalis	43	0.044*	0.259*	0.003
L Dorsal Anterior Cingulate Cortex	44	0.028*	0.215*	0.015
L Anterior PFC	45	0.028*	0.293*	0.001
L Dorsolateral PFC (Dorsal)	46	0.025*	0.200*	0.024
L Pre-Motor / Supplementary Motor Area	47	0.023*	0.224*	0.011
L Frontal Eye Field	48	0.039*	0.295*	0.001
L Ventral Posterior Cingulate Cortex	49	-0.007	0.225*	0.011
L Ventral Posterior Cingulate Cortex	50	0.021*	0.229*	0.010
R Superior Temporal Gyrus	93	0.011	0.237*	0.007
R Pars Orbitalis	94	0.026*	0.285*	0.001
R Broca's Triangle	95	0.036*	0.274*	0.002
R Anterior PFC	96	0.032*	0.222*	0.012
R Dorsolateral PFC (Dorsal)	97	0.020*	0.178*	0.045
R Frontal Eye Field	98	0.047*	0.295*	0.001
R Ventral Posterior Cingulate Cortex	100	0.001	0.194*	0.029
Limbic Network				
L Orbitofrontal Cortex	31	0.014	0.217*	0.014
L Temporal Pole	32	0.037*	0.256*	0.004
R Orbitofrontal Cortex	79	0.010	0.211*	0.018
Salience Network				

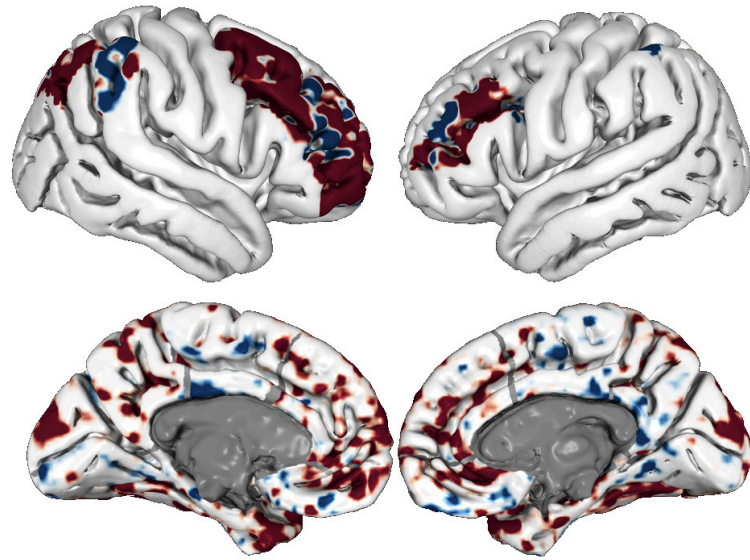
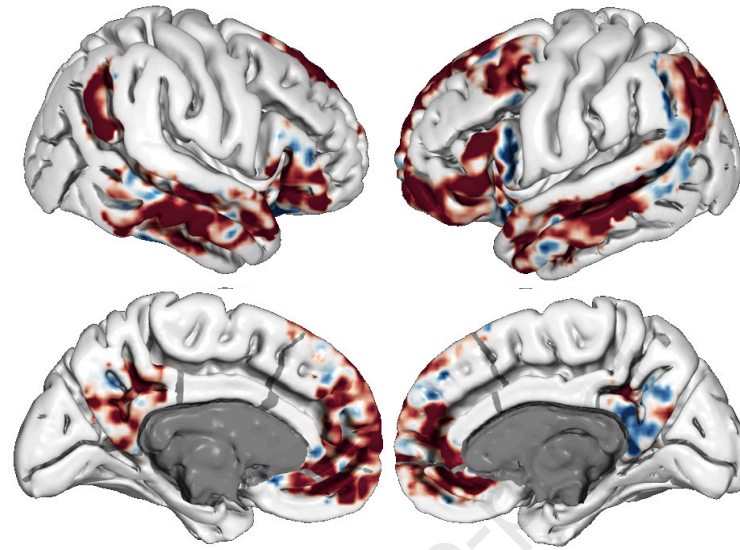
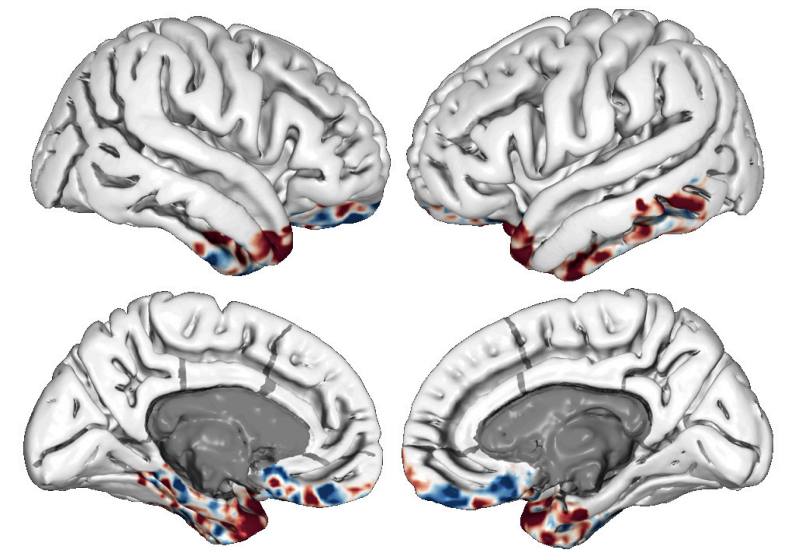
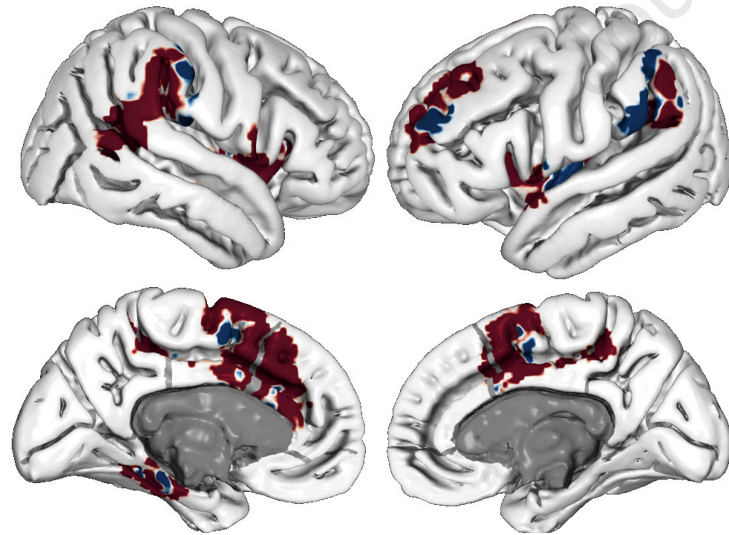
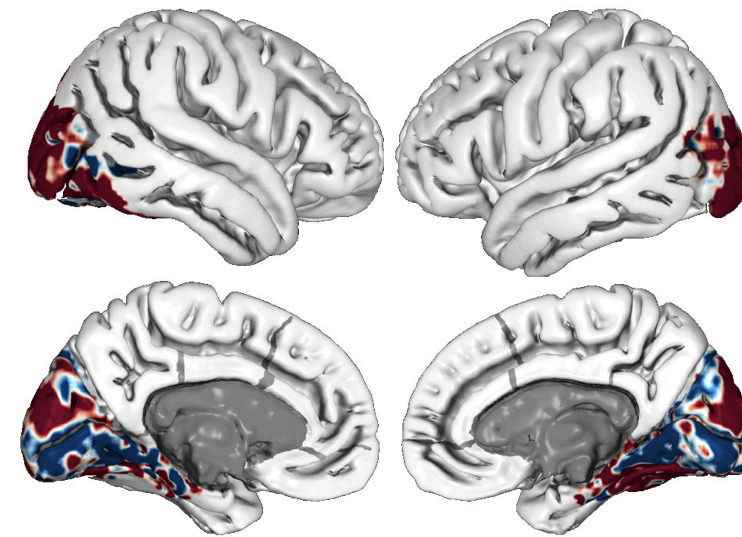
L Insula / Frontal Operculum	25	-0.001	0.288*	0.001
L Insula / Frontal Operculum	26	0.001	0.225*	0.011
L Anterior Lateral PFC	27	0.031*	0.269*	0.002
L Dorsal Anterior Cingulate Cortex	28	0.024*	0.221*	0.013
L Pre-Motor / Supplementary Motor Area	30	0.007	0.191*	0.032
R Insula / Frontal Operculum	76	0.009	0.255*	0.004
Visual Network				
L Visual Association Area	2	0.018	0.175*	0.049
L Visual Association Area	3	0.021*	0.272*	0.002
L Visual Association Area	7	0.013	0.214*	0.016
L Visual Association Area	8	0.032*	0.209*	0.018
R Fusiform Gyrus	51	0.022*	0.227*	0.010
R Fusiform Gyrus	52	0.023*	0.194*	0.029
R Primary Visual Cortex	55	0.016	0.194*	0.029
R Visual Association Area	57	0.028*	0.197*	0.026

* Denotes statistical significance ($R^2 > 0.0186$ or $p < .05$)



Brain-Predicted Anhedonia-Apprehension
in the External Validation Sample



Cognitive Control $-4.54e-6$ $4.54e-6$ ***Default-Mode*** $-1.20e-5$ $1.20e-5$ ***Limbic*** -0.0001 0.0001 ***Saliency*** $-1.81e-6$ $1.81e-6$ ***Visual*** $-1.77e-5$ $1.77e-5$