



## King's Research Portal

DOI:

[10.1371/journal.ppat.1008975](https://doi.org/10.1371/journal.ppat.1008975)

*Document Version*

Publisher's PDF, also known as Version of record

[Link to publication record in King's Research Portal](#)

*Citation for published version (APA):*

Camilli, G., Griffiths, J. S., Ho, J., Richardson, J. P., Naglik, J. R., & Jabra-rizk, M. A. (Ed.) (2020). Some like it hot: Candida activation of inflammasomes. *PLoS Pathogens*, 16(10), e1008975. [e1008975].  
<https://doi.org/10.1371/journal.ppat.1008975>

### **Citing this paper**

Please note that where the full-text provided on King's Research Portal is the Author Accepted Manuscript or Post-Print version this may differ from the final Published version. If citing, it is advised that you check and use the publisher's definitive version for pagination, volume/issue, and date of publication details. And where the final published version is provided on the Research Portal, if citing you are again advised to check the publisher's website for any subsequent corrections.

### **General rights**

Copyright and moral rights for the publications made accessible in the Research Portal are retained by the authors and/or other copyright owners and it is a condition of accessing publications that users recognize and abide by the legal requirements associated with these rights.

- Users may download and print one copy of any publication from the Research Portal for the purpose of private study or research.
- You may not further distribute the material or use it for any profit-making activity or commercial gain
- You may freely distribute the URL identifying the publication in the Research Portal

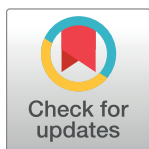
### **Take down policy**

If you believe that this document breaches copyright please contact [librarypure@kcl.ac.uk](mailto:librarypure@kcl.ac.uk) providing details, and we will remove access to the work immediately and investigate your claim.

## PEARLS

Some like it hot: *Candida* activation of inflammasomesGiorgio Camilli<sup>1</sup>\*, James S. Griffiths<sup>1</sup>, Jemima Ho<sup>1</sup>, Jonathan P. Richardson<sup>1</sup>, Julian R. Naglik

Centre for Host-Microbiome Interactions, Faculty of Dentistry, Oral and Craniofacial Sciences, King's College London, London, United Kingdom

\* [giorgio.camilli@kcl.ac.uk](mailto:giorgio.camilli@kcl.ac.uk)

## OPEN ACCESS

**Citation:** Camilli G, Griffiths JS, Ho J, Richardson JP, Naglik JR (2020) Some like it hot: *Candida* activation of inflammasomes. PLoS Pathog 16(10): e1008975. <https://doi.org/10.1371/journal.ppat.1008975>

**Editor:** Mary Ann Jabra-Rizk, University of Maryland, Baltimore, UNITED STATES

**Published:** October 29, 2020

**Copyright:** © 2020 Camilli et al. This is an open access article distributed under the terms of the [Creative Commons Attribution License](https://creativecommons.org/licenses/by/4.0/), which permits unrestricted use, distribution, and reproduction in any medium, provided the original author and source are credited.

**Funding:** This work was supported by grants from the Wellcome Trust (214229\_Z\_18\_Z), Biotechnology & Biological Sciences Research Council (BB/N014677/1), National Institutes of Health (R37-DE022550) and the NIH Research at Guys and St. Thomas's NHS Foundation Trust and the King's College London Biomedical Research Centre (IS-BRC-1215-20006). The funders had no role in study design, data collection and analysis, decision to publish, or preparation of the manuscript.

**Competing interests:** The authors have declared that no competing interests exist.

## Introduction

*Candida albicans* is a polymorphic fungus that causes a wide spectrum of complex diseases ranging from superficial mucocutaneous disorders to life-threatening invasive and disseminated infections, particularly in immunocompromised individuals. Understanding this complex *Candida*-host interaction and the mechanisms that favour protective immunity over immune pathology may provide valuable insights for the rational design of new immunotherapies. Immunity to *C. albicans* during mucosal and disseminated infections involves the cooperative action of innate and adaptive immune effectors that ultimately determines patient outcome. In recent years, huge progress has been made in our understanding of *Candida* immunity, particularly with regard to inflammasome activation, characterised by the release of the cytokines interleukin (IL)-1 $\beta$  and IL-18.

IL-1 $\beta$  and IL-18 are potent pro-inflammatory cytokines that coordinate the activation of innate and adaptive immune cells. They are produced as inactive cytoplasmic precursors (pro-IL-1 $\beta$  and pro-IL-18) in response to danger- or pathogen-associated molecular patterns (DAMPs/PAMPs; priming step) and must be posttranslationally processed by multimeric complexes, termed 'inflammasomes', to generate the mature, biologically active cytokines [1]. Inflammasomes typically consist of a sensor protein, an adaptor (apoptosis-associated speck-like protein containing a caspase recruitment domain (CARD) (ASC)), and an effector caspase. Inflammasome assembly and activation of downstream caspases are triggered by several molecular and cellular signalling events (activation step) that include ion flux, reactive oxygen species (ROS), mitochondria dysfunction, or lysosomal destabilisation [1]. In addition to cytokine secretion, pro-inflammatory caspases localised on inflammasomes can also cleave and activate the pore-forming protein gasdermin D (GSDMD). Cleaved GSDMD oligomerises and forms pores in the plasma membrane, leading to an inflammatory form of programmed cell death called pyroptosis, which functions as a host defence mechanism in a wide range of microbial infections [2]. However, inflammasome activation may be a double-edged sword and thus requires tight regulation to be protective rather than immunopathogenic [3]. Accordingly, determining the role played by inflammasomes during infectious diseases will be essential to identify intervention strategies aimed at boosting or inhibiting inflammasome-mediated immune responses.

Inflammasome activation during *C. albicans* infection

Multiple inflammasomes can be activated as a result of the complex interplay between host receptors and *C. albicans* cell wall components and secreted molecules. Thus far, *C. albicans* has been shown to activate nucleotide-binding oligomerisation domain (NOD)-like receptor

family pyrin domain-containing 3 (NLRP3), NOD-like receptor family CARD domain-containing protein 4 (NLRC4), and noncanonical/caspase-8 or caspase-11 inflammasomes in myeloid or epithelial cells (see *PLOS Pathogens* Pearls [4] for further details and references). Furthermore, accumulating evidence has demonstrated that *Candida*-induced inflammasome activation can lead to pyroptotic cell death (see *PLOS Pathogens* Pearls [5] for further details and references). Although the precise signalling sensed by cytosolic NLRs remains unclear, several molecular and cellular events leading to *Candida*-induced inflammasome activation are emerging. Fungal cell wall components can be recognised by cell surface C-type lectin receptors (CLRs) and Toll-like receptors (TLRs), which mainly provide a priming signal leading to the synthesis of pro-IL-1 $\beta$  and NLRP3 inflammasome components. For instance, engagement of the CLR dectin-1 and TLR2 by  $\beta$ -glucan and zymosan has been demonstrated to prime macrophages for subsequent IL-1 $\beta$  release by *C. albicans*, whilst the 2 stimuli were unable to elicit this response by themselves [6]. Similarly, Myd88 and B cell lymphoma 10 (BCL10), which mediate signals downstream of TLRs and CLRs, respectively, have been recently demonstrated to be necessary (induction of NLRP3 and IL-1 $\beta$  transcripts) but not sufficient to trigger inflammasome activation and pyroptosis in macrophages, suggesting that inflammasome activation and priming can be decoupled in response to *C. albicans* [7]. However, *C. albicans* activation of spleen tyrosine kinase (Syk)-coupled CLRs was found to induce both pro-IL-1 $\beta$  synthesis and NLRP3 inflammasome activation through ROS production and potassium efflux in murine dendritic cells [8]. Furthermore,  $\beta$ -glucan and both heat-killed and live *Candida* can induce the assembly and activation of a noncanonical CARD-9/BCL10/mucosa-associated lymphoid tissue lymphoma translocation (MALT)-1/ASC/caspase-8 inflammasome in human dendritic cells independently from dectin-1 internalisation or an intracellular NLR [9]. This alternative pathway may represent a rapid mechanism through which human dendritic cells release IL-1 $\beta$  to initiate and polarise appropriate adaptive immune responses. These findings also suggest that different signalling pathways may lead to inflammasome activation in distinct mononuclear phagocyte subsets during *C. albicans* infection.

After recognition of *Candida* PAMPs, host cell surface receptors mediate the internalisation of the pathogenic fungus. Phagocytosis of *C. albicans* and host lysosomal dysfunction were shown to be required for NLRP3 inflammasome activation [10]. Indeed, treatment of macrophages with cytochalasin D or CA-074-Me, which inhibit phagocytosis and cathepsin B, respectively, inhibited IL-1 $\beta$  production following *C. albicans* infection [10]. Furthermore, the yeast-to-hypha transition [10] and changes in the profile of PAMPs expressed in the hyphal cell wall, for example, the absence of a fully matured, branched outer mannan layer and the exposure of inner hyphal cell wall components (e.g.,  $\beta$ -glucan and chitin), have been proposed to enhance recognition by pattern recognition receptors (PRRs) and IL-1 $\beta$  production by macrophages [11]. Recently, however, the importance of *C. albicans* morphogenesis per se in the induction of inflammasome activation and pyroptosis has been placed under scrutiny. Indeed, filamentation-deficient *C. albicans* mutants capable of triggering IL-1 $\beta$  secretion and pyroptosis [12,13] and *C. albicans* mutants that retain the ability to form hyphae but induce decreased IL-1 $\beta$  secretion and macrophage pyroptosis [13,14] have been identified. These findings have also highlighted that biochemical features of the fungal cell wall, rather than just the physical morphology of *Candida*, likely contribute to inflammasome activation and pyroptosis. For instance, *srb9* $\Delta/\Delta$  mutant hyphae, which show reduced surface-exposed  $\beta$ -1,3-glucan, also exhibit reduced ability to cause IL-1 $\beta$  secretion and macrophage death post-phagocytosis [14]. Furthermore, fungal cell wall remodelling within the macrophage phagosome and exposure of glycosylated mannoproteins were required to trigger macrophage pyroptosis [7,12]. Additionally, increased biosynthesis of fungal plasma membrane ergosterol during the yeast-to-hypha

transition within phagosomes and its association with the outer mannoprotein layer have been shown to trigger inflammasome activation and pyroptosis [15]. Fungal cell wall remodelling was also observed to be dispensable for the priming step but crucial for inflammasome activation and macrophage pyroptosis, in the absence of phagolysosomal rupture [7]. However, how the signal moves from the phagosome to the cytoplasm to activate the cytosolic NLRP3 remains unclear. Indeed, whether the fungal moieties interact with membrane-bound receptors and/or enter the cytosol to trigger inflammasome activation has not yet been determined.

Apart from cell wall components, secreted molecules from *C. albicans* can also act as triggers of inflammasome activation. For instance, clathrin-dependent internalisation of secreted aspartyl proteinases (Sap2p and Sap6p) by human mononuclear phagocytes induces an early cascade of events (potassium efflux, ROS production, and lysosomal damage) leading to canonical NLRP3/caspase-1 activation and IL-1 $\beta$ /IL-18 production [16]. Additionally, studies with murine macrophages reveal that Sap-induced type I interferon production activated a noncanonical/caspase-11 inflammasome, which enhanced caspase-1 activation and cytokine production [16]. Furthermore, secretion of the peptide toxin candidalysin can also induce NLRP3/ASC/caspase-1 assembly and IL-1 $\beta$  maturation in human and murine macrophages via a mechanism requiring potassium efflux [17]. Candidalysin is secreted by hyphae, and phagocytes can be exposed to hyphae either pre- or post-phagocytosis. However, experiments conducted in the presence of cytochalasin D have shown inhibition of candidalysin-induced inflammasome activation, suggesting that toxin internalisation is required [17]. Thus, although a rapidly growing body of literature has begun to unravel the regulation and molecular mechanisms responsible for inflammasome activation during *Candida* infection, much remains to be learned, and further investigations are required for a better understanding of the precise mechanistic details.

### **Inflammasomes are immunological weapons in the fight against *C. albicans* infection**

In vivo studies have confirmed that inflammasomes are critical for mounting an effective anti-*Candida* response and in restricting fungal growth and dissemination. Using a murine model of oropharyngeal candidiasis (OPC) and *Il1r*<sup>-/-</sup>, *Nlrp3*<sup>-/-</sup>, *Asc*<sup>-/-</sup>, and *caspase-1*<sup>-/-</sup> mice, Hise and colleagues showed that inflammasome components were critical for controlling *C. albicans* burdens in tongue tissue, preventing dissemination to the kidneys and enhancing host survival [6]. In a follow-up study, NLRC4 inflammasome activation was also demonstrated to prevent OPC and early systemic dissemination of *C. albicans* infection by coordinating both innate and adaptive immune responses [18]. Neutrophils are essential for innate immunity and resistance to fungal pathogens, and IL-1 $\beta$  participates in driving neutrophil recruitment at the site of infection. Neutrophil influx into the *Nlrc4*<sup>-/-</sup> tongue was drastically reduced compared to either wild-type (wt) or *Nlrp3*<sup>-/-</sup> mice, and NLRC4 activation was crucial for the trafficking of neutrophils to the site of active *Candida* infection. Furthermore, antimicrobial peptides are important effector molecules of innate immunity that disrupt pathogen function and act as regulators of inflammation. Interestingly, the expression of antimicrobial peptides in the buccal mucosal tissue of *Nlrc4*<sup>-/-</sup>, *Nlrp3*<sup>-/-</sup>, and *Asc*<sup>-/-</sup> mice was strongly reduced compared to wt mice following *C. albicans* infection. Similarly, mucosal IL-17 responses to *Candida* were dependent on both NLRP3 and NLRC4 [18]. OPC was more severe in *Nlrc4*<sup>-/-</sup> mice compared with either wt or *Nlrp3*<sup>-/-</sup> mice, suggesting that NLRC4 plays a more prominent role than NLRP3 against oral infection. In addition, murine bone marrow chimaera experiments showed that OPC is controlled by NLRC4 functioning in the stromal and epithelial compartment and by NLRP3 functioning in hematopoietic-derived inflammatory cells, whilst

protection against disseminated fungal infection was driven by NLRP3 functioning in both hematopoietic and stromal cell lineages [18].

Currently, the fungal components that activate inflammasomes at mucosal surfaces are unclear, but oral epithelial cells are known to secrete IL-1 $\beta$  in response to candidalysin [19]. Notably, IL-1 $\beta$  release may occur through epidermal growth factor receptor (EGFR) activation [20] and drives the proliferation of innate IL-17+TCR $\alpha\beta$ +lymphocytes in tongue tissue [21], which are essential for the resolution of murine OPC [22]. These data strongly suggest a central role for candidalysin in inflammasome-mediated defences against OPC. Epithelial inflammasomes may also be activated through the EphA2 receptor, since oral tissues of *EphA2*<sup>-/-</sup> mice expressed lower levels of IL-1 $\beta$ , interferon gamma (IFN- $\gamma$ ), and IL-17A and harboured higher fungal burdens and greater fungal dissemination to the liver [23].

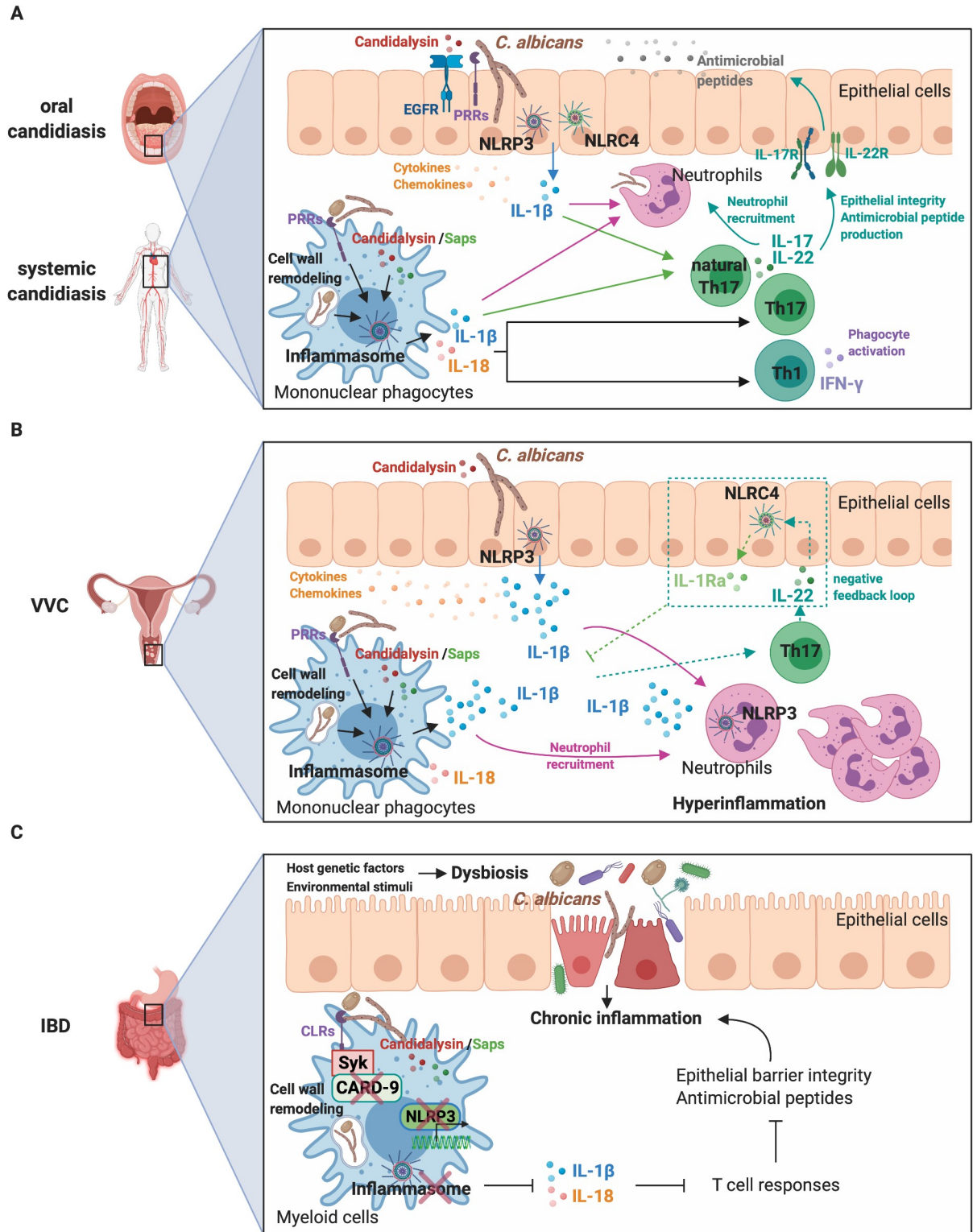
Inflammasome activation is also critical for protection against (intravenous) disseminated *C. albicans* infection. *Nlrp3*<sup>-/-</sup> mice rapidly succumb to *C. albicans* infection compared with wt mice [8] and are associated with significantly increased fungal burdens in the kidneys, liver, spleen, and lungs [8,10]. Likewise, *Asc*<sup>-/-</sup> and *Caspase-1*<sup>-/-</sup> mice were more susceptible to disseminated candidiasis, with bone marrow-derived dendritic cells releasing significantly reduced levels of IL-1 $\beta$  and IL-18 following *C. albicans* challenge [24]. In addition, impaired production of IL-17 and IFN- $\gamma$  was observed in *C. albicans*-challenged splenocytes isolated from *Il-1 $\beta$* <sup>-/-</sup> and *Il-18*<sup>-/-</sup> mice, respectively [24].

Together, these findings suggest that the activation of inflammasomes plays a prominent role in driving protective innate and adaptive antifungal immune responses during mucosal and invasive *Candida* infections (Fig 1A). However, the precise role of *C. albicans*-triggered pyroptosis has yet to be elucidated. Importantly, a recent study has shown that pyroptosis occurs in vivo in the kidneys of infected mice during the early stages of infection [15]. Furthermore, neutrophil recruitment in the kidneys of infected mice was dependent on *C. albicans* mutant strains capable of inducing inflammasome activation and pyroptosis [7]. Thus, although pyroptosis may represent an immune evasion strategy to overcome killing by macrophages, this inflammatory form of programmed cell death may also favour neutrophil recruitment to eliminate the pathogen.

### NLRP3 inflammasome: A double-edged sword in *Candida* infection

Whilst inflammasome activation is generally considered beneficial for mounting protective anti-*Candida* responses, it may also be detrimental and drive immunopathology, as seems to be the case in vulvovaginal candidiasis (VVC). Symptomatic VVC infection is linked to immune hyperreactivity to the fungus and characterised by significant vaginal neutrophil infiltration, NLRP3 inflammasome activation, and increased cytokine production. Notably, polymorphisms and variable number tandem repeats in the *NLRP3* gene are associated with VVC [25,26]. Likewise, overexpression of NLRP3, caspase-1, and elevated IL-1 $\beta$  secretion are observed in vaginal epithelial cells isolated from symptomatic VVC patients [27]. In murine studies, neutrophil numbers and IL-1 $\beta$  levels were reduced in vaginal lavage fluid of *Nlrp3*<sup>-/-</sup> mice challenged with *C. albicans* [28]. Interestingly, both filamentation [29] and candidalysin secretion [30] are critical in driving inflammation (including IL-1 $\beta$ ), neutrophil recruitment, and pathology in VVC, suggesting a primary role for candidalysin in vulvovaginal immunopathogenesis (Fig 1B).

IL-22 also appears to play a role in VVC. A functional single nucleotide polymorphism (SNP) in the human *IL-22* gene was found to be associated with a decreased risk for VVC and correlated with increased IL-22 expression [31]. Borghi and colleagues demonstrated that an IL-22/NLRC4/IL-1 receptor antagonist (IL-1Ra) axis controls NLRP3 activation during



**Fig 1. Interplay between *C. albicans*, inflammasomes, and the host immune system during infection.** (A) NLRP3 and NLRC4 inflammasome activation in epithelial and myeloid cells and the release of IL-1 $\beta$  and IL-18 during oral and systemic candidiasis are instrumental components of the inflammatory response, ultimately orchestrating both innate and adaptive immunity to eliminate the fungus. (B) During VVC, hyphae- and hypha-associated virulence factors induce a powerful NLRP3 inflammasome and inflammatory response that drives the recruitment of large numbers of neutrophils to the site of inflammation. Host genetic variations in inflammasome and other

pathways likely influence VVC susceptibility and hyperreactivity to the fungus. An imbalance of NLRP3 inflammasome activation and its IL-22/NLRC4/IL-1Ra negative feedback pathway also contributes to hyperinflammation and disease pathogenesis. (C) A combination of environmental (e.g., diet, antibiotics, and antifungals) and host genetic factors can promote dysbiosis and loss of intestinal immune homeostasis. Impaired mucosal barrier function and dysregulated antimicrobial immune responses result in uncontrolled chronic inflammation. In the genetically susceptible host, impaired inflammasome-mediated anti-*Candida* responses contribute to intestinal inflammation and IBD pathogenesis. CARD-9, caspase recruitment domain-containing protein 9; CLRs, C-type lectin receptors; EGFR, epidermal growth factor receptor; IBD, inflammatory bowel disease; IFN- $\gamma$ , interferon gamma; IL, interleukin; IL-1Ra, IL-1 receptor antagonist; NLRC4, NOD-like receptor family CARD domain-containing protein 4; NLRP3, NOD-like receptor family pyrin domain-containing 3; PRRs, pattern recognition receptors; Saps, secreted aspartyl proteinases; Syk, spleen tyrosine kinase; Th, T-helper; VVC, vulvovaginal candidiasis.

<https://doi.org/10.1371/journal.ppat.1008975.g001>

*Candida* infection [32]. In this model, IL-22 production via the aryl hydrocarbon receptor (AhR) activates epithelial NLRC4, which, in turn, restrains NLRP3 activity by inducing sustained production of IL-1Ra. Similarly, NLRC4, but not NLRP3 expression, was increased by IL-22 in response to *Candida* in human vulvovaginal A431 cells. Moreover, high levels of IL-1 $\beta$  and low levels of IL-1Ra and IL-22 were observed in vaginal fluids of patients with recurrent VVC, suggesting that defective production of IL-1Ra and IL-22 and the impairment of this axis may contribute to disease pathogenesis [32] (Fig 1B). These data highlight the importance of regulating inflammasome activation to fine tune inflammatory processes during *C. albicans* infection. However, whether the pro-inflammatory nature of *C. albicans*-induced pyroptosis [7] contributes to disease pathogenesis is still largely unknown and is thus an important direction for future research.

### ***Candida*, inflammasomes, and inflammatory bowel disease**

Inflammatory bowel disease (IBD) is characterised by chronic inflammation of the gastrointestinal (GI) tract, which includes ulcerative colitis (UC) and Crohn's disease (CD). Notably, alterations in the biodiversity and composition of fungal microbiota, with an expansion of *C. albicans*, are observed in IBD patients [33,34]. Although the cause and the exact mechanism of IBD pathogenesis remain to be elucidated, environmental stimuli (e.g., diet, antibiotics, and antifungals), imbalanced interactions with commensal gut microbes, including fungi, and aberrant immune responses appear to contribute to the development of the chronic intestinal inflammation in genetically susceptible individuals [35]. Interestingly, IBD is associated with SNPs in *dectin-1*, which is a critical CLR required for an effective antifungal immune response [36]. Consistently, dextran sulfate sodium (DSS)-induced colitis was more severe following *Candida tropicalis* supplementation in *dectin-1*<sup>-/-</sup> mice. In addition, fluconazole treatment reduced colitis symptoms, inflammatory cell infiltration, and production of IL-17 and IFN- $\gamma$  by T cells, confirming that impaired antifungal immunity leads to increased disease severity [36]. Similarly, higher levels of neutrophil infiltration, colon lesions, and IL-1 $\beta$  expression were observed in DSS-treated mice following GI colonisation with *C. albicans* [37].

IBD is also associated with SNPs in *CARD-9* [38], and mice lacking *CARD-9* or the kinase Syk show reduced inflammasome activation and IL-18 secretion during azoxymethane (AOM)-DSS-induced colitis-associated colon cancer [39]. These mice also exhibited reduced IFN- $\gamma$  production by T cells and increased inflammation and epithelial hyperplasia. Notably, similar events occurred when wt mice were depleted of commensal fungi and disease severity significantly ameliorated by exogenous IL-18 supplementation. Furthermore, *CARD-9* and Syk were required for caspase-1 activation and IL-18 release in bone marrow-derived myeloid cells in response to *C. albicans*. Thus, inflammasome-mediated IL-18 release through the activation of Syk/*CARD-9* signalling by commensal gut fungi preserves epithelial barrier function, promotes CD8<sup>+</sup> T cell responses, and ultimately, restrains colitis and colon tumorigenesis [39]. Interestingly, CD is also associated with SNPs in *NLRP3* and concomitant reduction in

IL-1 $\beta$  production [40]. Indeed, whilst the exact role of NLRP3 in IBD is not yet fully elucidated, increasing evidence has suggested that appropriate inflammasome activation has a protective effect in colitis and colitis-associated carcinogenesis [41]. For instance, *Nlrp3*<sup>-/-</sup>, *Asc*<sup>-/-</sup>, and *cas-pase-1*<sup>-/-</sup> mice were observed to be highly susceptible to DSS-induced colitis. Furthermore, these mice also exhibited commensal overgrowth and bacteremia, increased DSS-induced morbidity and lethality, and an exaggerated immune response, which may further worsen disease severity [42]. Similarly, a pathophysiological model linking impaired anti-*Candida* responses, including an impaired NLRP3 inflammasome activity, and the development of CD has been suggested. This model supports a scenario whereby the progression of IBD in genetically susceptible individuals results from a vicious cycle: inflammation and abnormalities in immune regulation promote proliferation and mucosal invasion by *C. albicans*, which, in turn, exacerbates the inflammatory process and tissue damage as a consequence of immune dysregulation [43].

Although animal models cannot fully reflect human diseases, they have greatly contributed to our understanding of the mechanism of IBD and the potential contribution of gut fungi and dysregulated immune responses to IBD pathogenesis. Interestingly, the anti-IL-17A monoclonal antibody secukinumab was ineffective in the treatment of CD in a randomised, double-blind, placebo-controlled proof-of-concept study and highlighted adverse effects in patients including a higher frequency of *Candida* infections compared to placebo [44]. This result further suggests that impaired anti-*Candida* immunity, including defective inflammasome-driven responses, may play a role in human IBD. Nonetheless, further investigation is required to confirm this model and the relationship between *Candida*, inflammasome dysregulation, and GI inflammation (Fig 1C).

### Inflammasomes as therapeutic targets in *Candida* disease

Inflammasome activation plays a pivotal role in antifungal immune responses and is a tightly regulated process. Dysregulation of the inflammasome can lead to host damage and excessive inflammation, with inflammasome hyperactivation being a central player in several human autoinflammatory and autoimmune diseases. This has encouraged efforts to identify potent and specific ways to interfere with inflammasome activation or the activity of inflammasome-dependent cytokines [1]. Hence, targeting inflammasome pathways may provide novel and effective therapeutic approaches to neutralise potent inflammatory mediators that exacerbate the pathogenesis of *C. albicans* infection, as in the case of VVC. Notably, administration of recombinant IL-1Ra (anakinra) can reduce NLRP3-driven inflammation and protect against infection in mouse models of *Candida* vaginitis [32]. Furthermore, the NLRP3 inhibitor MCC950 and the adenosine triphosphate (ATP)-sensitive potassium channel inhibitor glyburide, which also inhibits inflammasome activation, significantly reduced IL-1 $\beta$  release by the human monocytic cell line THP-1 following *Candida* exposure or stimulation with candidalysin [45]. Likewise, intravaginal inoculation of glyburide in mice prior to *C. albicans* infection reduced neutrophil infiltration and IL-1 $\beta$  production in vaginal lavage fluid [28]. These findings demonstrate the potential role for inflammasome inhibitors or anti-IL-1 $\beta$  treatment in the control of hyperinflammation-driven *C. albicans* diseases. Future work will determine whether such a therapeutic approach can be translated to clinical care.

### Acknowledgments

We apologise to colleagues whose work was not cited in this article because of space limitations. The figure was created with BioRender.

## References

1. Mangan MSJ, Olhava EJ, Roush WR, Seidel HM, Glick GD, Latz E. Targeting the NLRP3 inflammasome in inflammatory diseases. *Nat Rev Drug Discov*. 2018; 17(8):588–606. Epub 2018 Jul 22. <https://doi.org/10.1038/nrd.2018.97> PMID: 30026524.
2. Jorgensen I, Rayamajhi M, Miao EA. Programmed cell death as a defence against infection. *Nat Rev Immunol*. 2017; 17(3):151–164. Epub 2017 Feb 1. <https://doi.org/10.1038/nri.2016.147> PMID: 28138137; PubMed Central PMCID: PMC5328506.
3. Jo EK, Kim JK, Shin DM, Sasakawa C. Molecular mechanisms regulating NLRP3 inflammasome activation. *Cell Mol Immunol*. 2016; 13(2):148–159. Epub 2015 Nov 10. <https://doi.org/10.1038/cmi.2015.95> PMID: 26549800; PubMed Central PMCID: PMC4786634.
4. Tavares AH, Burgel PH, Bocca AL. Turning up the heat: inflammasome activation by fungal pathogens. *PLoS Pathog*. 2015; 11(7):e1004948. Epub 2015 Jul 24. <https://doi.org/10.1371/journal.ppat.1004948> PMID: 26204108; PubMed Central PMCID: PMC4512686.
5. Krysan DJ, Sutterwala FS, Wellington M. Catching fire: *Candida albicans*, macrophages, and pyroptosis. *PLoS Pathog*. 2014; 10(6):e1004139. Epub 2014 Jun 27. <https://doi.org/10.1371/journal.ppat.1004139> PMID: 24967821; PubMed Central PMCID: PMC4072798.
6. Hise AG, Tomalka J, Ganesan S, Patel K, Hall BA, Brown GD, et al. An essential role for the NLRP3 inflammasome in host defense against the human fungal pathogen *Candida albicans*. *Cell Host Microbe*. 2009; 5(5):487–497. Epub 2009 May 21. <https://doi.org/10.1016/j.chom.2009.05.002> PMID: 19454352; PubMed Central PMCID: PMC2824856.
7. O'Meara TR, Duah K, Guo CX, Maxson ME, Gaudet RG, Koselny K, et al. High-throughput screening identifies genes required for *Candida albicans* induction of macrophage pyroptosis. *mBio*. 2018; 9(4). Epub 2018 Aug 23. <https://doi.org/10.1128/mBio.01581-18> PMID: 30131363; PubMed Central PMCID: PMC6106084.
8. Gross O, Poeck H, Bscheider M, Dostert C, Hanneschlager N, Endres S, et al. Syk kinase signalling couples to the Nlrp3 inflammasome for anti-fungal host defence. *Nature*. 2009; 459(7245):433–436. Epub 2009 Apr 3. <https://doi.org/10.1038/nature07965> PMID: 19339971.
9. Gringhuis SI, Kaptein TM, Wevers BA, Theelen B, van der Vliet M, Boekhout T, et al. Dectin-1 is an extracellular pathogen sensor for the induction and processing of IL-1 $\beta$  via a noncanonical caspase-8 inflammasome. *Nat Immunol*. 2012; 13(3):246–254. Epub 2012 Jan 24. <https://doi.org/10.1038/ni.2222> PMID: 22267217.
10. Joly S, Ma N, Sadler JJ, Soll DR, Cassel SL, Sutterwala FS. Cutting edge: *Candida albicans* hyphae formation triggers activation of the Nlrp3 inflammasome. *J Immunol*. 2009; 183(6):3578–3581. Epub 2009 Aug 18. <https://doi.org/10.4049/jimmunol.0901323> PMID: 19684085; PubMed Central PMCID: PMC2739101.
11. Cheng SC, van de Veerdonk FL, Lenardon M, Stoffels M, Plantinga T, Smeekens S, et al. The dectin-1 inflammasome pathway is responsible for the induction of protective T-helper 17 responses that discriminate between yeasts and hyphae of *Candida albicans*. *J Leukoc Biol*. 2011; 90(2):357–366. Epub 2011 May 3. <https://doi.org/10.1189/jlb.1210702> PMID: 21531876; PubMed Central PMCID: PMC3513931.
12. O'Meara TR, Veri AO, Ketela T, Jiang B, Roemer T, Cowen LE. Global analysis of fungal morphology exposes mechanisms of host cell escape. *Nat Commun*. 2015; 6:6741. Epub 2015 Apr 1. <https://doi.org/10.1038/ncomms7741> PMID: 25824284; PubMed Central PMCID: PMC4382923.
13. Wellington M, Koselny K, Krysan DJ. *Candida albicans* morphogenesis is not required for macrophage interleukin 1 $\beta$  production. *mBio*. 2012; 4(1):e00433.12. Epub 2012 Dec 28. <https://doi.org/10.1128/mBio.00433-12> PMID: 23269828; PubMed Central PMCID: PMC3531805.
14. Uwamahoro N, Verma-Gaur J, Shen HH, Qu Y, Lewis R, Lu J, et al. The pathogen *Candida albicans* hijacks pyroptosis for escape from macrophages. *mBio*. 2014; 5(2):e00003–e00004. Epub 2014 Mar 29. <https://doi.org/10.1128/mBio.00003-14> PMID: 24667705; PubMed Central PMCID: PMC3977349.
15. Koselny K, Mutlu N, Minard AY, Kumar A, Krysan DJ, Wellington M. A genome-wide screen of deletion mutants in the filamentous *Saccharomyces cerevisiae* background identifies ergosterol as a direct trigger of macrophage pyroptosis. *mBio*. 2018; 9(4). Epub 2018 Aug 2. <https://doi.org/10.1128/mBio.01204-18> PMID: 30065091; PubMed Central PMCID: PMC6069111.
16. Gabrielli E, Pericolini E, Luciano E, Sabbatini S, Roselletti E, Perito S, et al. Induction of caspase-11 by aspartyl proteinases of *Candida albicans* and implication in promoting inflammatory response. *Infect Immun*. 2015; 83(5):1940–1948. Epub 2015 Feb 26. <https://doi.org/10.1128/IAI.02895-14> PMID: 25712931; PubMed Central PMCID: PMC4399077.
17. Kasper L, Konig A, Koenig PA, Gresnigt MS, Westman J, Drummond RA, et al. The fungal peptide toxin Candidalysin activates the NLRP3 inflammasome and causes cytolysis in mononuclear phagocytes.

- Nat Commun. 2018; 9(1):4260. Epub 2018 Oct 17. <https://doi.org/10.1038/s41467-018-06607-1> PMID: 30323213; PubMed Central PMCID: PMC6189146.
18. Tomalka J, Ganesan S, Azodi E, Patel K, Majmudar P, Hall BA, et al. A novel role for the NLRC4 inflammasome in mucosal defenses against the fungal pathogen *Candida albicans*. PLoS Pathog. 2011; 7(12):e1002379. Epub 2011 Dec 17. <https://doi.org/10.1371/journal.ppat.1002379> PMID: 22174673; PubMed Central PMCID: PMC3234225.
  19. Moyes DL, Wilson D, Richardson JP, Mogavero S, Tang SX, Wernecke J, et al. Candidalysin is a fungal peptide toxin critical for mucosal infection. Nature. 2016; 532(7597):64–68. Epub 2016 Mar 31. <https://doi.org/10.1038/nature17625> PMID: 27027296; PubMed Central PMCID: PMC4851236.
  20. Ho J, Yang X, Nikou SA, Kichik N, Donkin A, Ponde NO, et al. Candidalysin activates innate epithelial immune responses via epidermal growth factor receptor. Nat Commun. 2019; 10(1):2297. Epub 2019 May 28. <https://doi.org/10.1038/s41467-019-09915-2> PMID: 31127085; PubMed Central PMCID: PMC6534540.
  21. Verma AH, Richardson JP, Zhou C, Coleman BM, Moyes DL, Ho J, et al. Oral epithelial cells orchestrate innate type 17 responses to *Candida albicans* through the virulence factor candidalysin. Sci Immunol. 2017; 2(17). Epub 2017 Nov 5. <https://doi.org/10.1126/sciimmunol.aam8834> PMID: 29101209; PubMed Central PMCID: PMC5881387.
  22. Conti HR, Shen F, Nayyar N, Stocum E, Sun JN, Lindemann MJ, et al. Th17 cells and IL-17 receptor signaling are essential for mucosal host defense against oral candidiasis. J Exp Med. 2009; 206(2):299–311. Epub 2009 Feb 11. <https://doi.org/10.1084/jem.20081463> PMID: 19204111; PubMed Central PMCID: PMC2646568.
  23. Swidergall M, Solis NV, Lionakis MS, Filler SG. EphA2 is an epithelial cell pattern recognition receptor for fungal  $\beta$ -glucans. Nat Microbiol. 2018; 3(1):53–61. Epub 2017 Nov 15. <https://doi.org/10.1038/s41564-017-0059-5> PMID: 29133884; PubMed Central PMCID: PMC5736406.
  24. van de Veerdonk FL, Joosten LA, Shaw PJ, Smeekens SP, Malireddi RK, van der Meer JW, et al. The inflammasome drives protective Th1 and Th17 cellular responses in disseminated candidiasis. Eur J Immunol. 2011; 41(8):2260–2268. Epub 2011 Jun 18. <https://doi.org/10.1002/eji.201041226> PMID: 21681738; PubMed Central PMCID: PMC3939807.
  25. Jaeger M, Carvalho A, Cunha C, Plantinga TS, van de Veerdonk F, Puccetti M, et al. Association of a variable number tandem repeat in the NLRP3 gene in women with susceptibility to RVVC. Eur J Clin Microbiol Infect Dis. 2016; 35(5):797–801. Epub 2016 Mar 10. <https://doi.org/10.1007/s10096-016-2600-5> PMID: 26951262; PubMed Central PMCID: PMC4840230.
  26. Lev-Sagie A, Prus D, Linhares IM, Lavy Y, Ledger WJ, Witkin SS. Polymorphism in a gene coding for the inflammasome component NALP3 and recurrent vulvovaginal candidiasis in women with vulvar vestibulitis syndrome. Am J Obstet Gynecol. 2009; 200(3):303.e1–e6. Epub 2009 Mar 4. <https://doi.org/10.1016/j.ajog.2008.10.039> PMID: 19254587.
  27. Roselletti E, Perito S, Gabrielli E, Mencacci A, Pericolini E, Sabbatini S, et al. NLRP3 inflammasome is a key player in human vulvovaginal disease caused by *Candida albicans*. Sci Rep. 2017; 7(1):17877. Epub 2017 Dec 21. <https://doi.org/10.1038/s41598-017-17649-8> PMID: 29259175; PubMed Central PMCID: PMC5736597.
  28. Bruno VM, Shetty AC, Yano J, Fidel PL Jr, Noverr MC, Peters BM. Transcriptomic analysis of vulvovaginal candidiasis identifies a role for the NLRP3 inflammasome. mBio. 2015; 6(2). Epub 2015 Apr 23. <https://doi.org/10.1128/mBio.00182-15> PMID: 25900651; PubMed Central PMCID: PMC4453569.
  29. Peters BM, Palmer GE, Nash AK, Lilly EA, Fidel PL Jr, Noverr MC. Fungal morphogenetic pathways are required for the hallmark inflammatory response during *Candida albicans* vaginitis. Infect Immun. 2014; 82(2):532–543. Epub 2014 Jan 31. <https://doi.org/10.1128/IAI.01417-13> PMID: 24478069; PubMed Central PMCID: PMC3911367.
  30. Richardson JP, Willems HME, Moyes DL, Shoaie S, Barker KS, Tan SL, et al. Candidalysin drives epithelial signaling, neutrophil recruitment, and immunopathology at the vaginal mucosa. Infect Immun. 2018; 86(2). Epub 2017 Nov 8. <https://doi.org/10.1128/IAI.00645-17> PMID: 29109176; PubMed Central PMCID: PMC5778364.
  31. De Luca A, Carvalho A, Cunha C, Iannitti RG, Pitzurra L, Giovannini G, et al. IL-22 and IDO1 affect immunity and tolerance to murine and human vaginal candidiasis. PLoS Pathog. 2013; 9(7):e1003486. Epub 2013 Jul 16. <https://doi.org/10.1371/journal.ppat.1003486> PMID: 23853597; PubMed Central PMCID: PMC3708875.
  32. Borghi M, De Luca A, Puccetti M, Jaeger M, Mencacci A, Oikonomou V, et al. Pathogenic NLRP3 inflammasome activity during *Candida* infection is negatively regulated by IL-22 via activation of NLRC4 and IL-1Ra. Cell Host Microbe. 2015; 18(2):198–209. Epub 2015 Aug 14. <https://doi.org/10.1016/j.chom.2015.07.004> PMID: 26269955.

33. Sokol H, Leducq V, Aschard H, Pham HP, Jegou S, Landman C, et al. Fungal microbiota dysbiosis in IBD. *Gut*. 2017; 66(6):1039–1048. Epub 2016 Feb 5. <https://doi.org/10.1136/gutjnl-2015-310746> PMID: 26843508; PubMed Central PMCID: PMC5532459.
34. Stamatiades GA, Ioannou P, Petrikkos G, Tsioutis C. Fungal infections in patients with inflammatory bowel disease: a systematic review. *Mycoses*. 2018; 61(6):366–376. Epub 2018 Feb 18. <https://doi.org/10.1111/myc.12753> PMID: 29453860; PubMed Central PMCID: PMC5980782.
35. Richard ML, Lamas B, Liguori G, Hoffmann TW, Sokol H. Gut fungal microbiota: the Yin and Yang of inflammatory bowel disease. *Inflamm Bowel Dis*. 2015; 21(3):656–665. Epub 2014 Dec 30. <https://doi.org/10.1097/MIB.0000000000000261> PMID: 25545379.
36. Iliev ID, Funari VA, Taylor KD, Nguyen Q, Reyes CN, Strom SP, et al. Interactions between commensal fungi and the C-type lectin receptor Dectin-1 influence colitis. *Science*. 2012; 336(6086):1314–1317. Epub 2012 Jun 8. <https://doi.org/10.1126/science.1221789> PMID: 22674328; PubMed Central PMCID: PMC3432565.
37. Jawhara S, Thuru X, Standaert-Vitse A, Jouault T, Mordon S, Sendid B, et al. Colonization of mice by *Candida albicans* is promoted by chemically induced colitis and augments inflammatory responses through galectin-3. *J Infect Dis*. 2008; 197(7):972–980. Epub 2008 Apr 19. <https://doi.org/10.1086/528990> PMID: 18419533.
38. Zhernakova A, Festen EM, Franke L, Trynka G, van Diemen CC, Monsuur AJ, et al. Genetic analysis of innate immunity in Crohn's disease and ulcerative colitis identifies two susceptibility loci harboring CARD9 and IL18RAP. *Am J Hum Genet*. 2008; 82(5):1202–1210. Epub 2008 Apr 29. <https://doi.org/10.1016/j.ajhg.2008.03.016> PMID: 18439550; PubMed Central PMCID: PMC2427314.
39. Malik A, Sharma D, Malireddi RKS, Guy CS, Chang TC, Olsen SR, et al. SYK-CARD9 signaling axis promotes gut fungi-mediated inflammasome activation to restrict colitis and colon cancer. *Immunity*. 2018; 49(3):515–530.e5. Epub 2018 Sep 21. <https://doi.org/10.1016/j.immuni.2018.08.024> PMID: 30231985; PubMed Central PMCID: PMC6541497.
40. Villani AC, Lemire M, Fortin G, Louis E, Silverberg MS, Collette C, et al. Common variants in the NLRP3 region contribute to Crohn's disease susceptibility. *Nat Genet*. 2009; 41(1):71–76. Epub 2008 Dec 23. <https://doi.org/10.1038/ng.285> PMID: 19098911; PubMed Central PMCID: PMC2728932.
41. Zaki MH, Lamkanfi M, Kanneganti TD. The Nlrp3 inflammasome: contributions to intestinal homeostasis. *Trends Immunol*. 2011; 32(4):171–179. Epub 2011 Mar 11. <https://doi.org/10.1016/j.it.2011.02.002> PMID: 21388882; PubMed Central PMCID: PMC3070791.
42. Zaki MH, Boyd KL, Vogel P, Kastan MB, Lamkanfi M, Kanneganti TD. The NLRP3 inflammasome protects against loss of epithelial integrity and mortality during experimental colitis. *Immunity*. 2010; 32(3):379–391. Epub 2010 Mar 23. <https://doi.org/10.1016/j.immuni.2010.03.003> PMID: 20303296; PubMed Central PMCID: PMC2982187.
43. Rehaume LM, Jouault T, Chamaillard M. Lessons from the inflammasome: a molecular sentry linking *Candida* and Crohn's disease. *Trends Immunol*. 2010; 31(5):171–175. Epub 2010 Feb 13. <https://doi.org/10.1016/j.it.2010.01.007> PMID: 20149741.
44. Hueber W, Sands BE, Lewitzky S, Vandemeulebroecke M, Reinisch W, Higgins PD, et al. Secukinumab, a human anti-IL-17A monoclonal antibody, for moderate to severe Crohn's disease: unexpected results of a randomised, double-blind placebo-controlled trial. *Gut*. 2012; 61(12):1693–1700. Epub 2012 May 19. <https://doi.org/10.1136/gutjnl-2011-301668> PMID: 22595313; PubMed Central PMCID: PMC4902107.
45. Lowes DJ, Hevener KE, Peters BM. Second-generation antidiabetic sulfonylureas inhibit *Candida albicans* and Candidalysin-mediated activation of the NLRP3 inflammasome. *Antimicrob Agents Chemother*. 2020; 64(2). Epub 2019 Nov 13. <https://doi.org/10.1128/AAC.01777-19> PMID: 31712208; PubMed Central PMCID: PMC6985747.