



King's Research Portal

DOI:

[10.1093/CKJ/SFZ160](https://doi.org/10.1093/CKJ/SFZ160)

Document Version

Publisher's PDF, also known as Version of record

[Link to publication record in King's Research Portal](#)

Citation for published version (APA):

Chilcot, J., & Farrington, K. (2020). Self-reported anti-depressant use in haemodialysis patients is associated with increased mortality, independently of concurrent depression severity. *Clinical Kidney Journal*, 13(6), 1109-1110. <https://doi.org/10.1093/CKJ/SFZ160>

Citing this paper

Please note that where the full-text provided on King's Research Portal is the Author Accepted Manuscript or Post-Print version this may differ from the final Published version. If citing, it is advised that you check and use the publisher's definitive version for pagination, volume/issue, and date of publication details. And where the final published version is provided on the Research Portal, if citing you are again advised to check the publisher's website for any subsequent corrections.

General rights

Copyright and moral rights for the publications made accessible in the Research Portal are retained by the authors and/or other copyright owners and it is a condition of accessing publications that users recognize and abide by the legal requirements associated with these rights.

- Users may download and print one copy of any publication from the Research Portal for the purpose of private study or research.
- You may not further distribute the material or use it for any profit-making activity or commercial gain
- You may freely distribute the URL identifying the publication in the Research Portal

Take down policy

If you believe that this document breaches copyright please contact librarypure@kcl.ac.uk providing details, and we will remove access to the work immediately and investigate your claim.



LETTER TO THE EDITOR

Self-reported antidepressant use in haemodialysis patients is associated with increased mortality independent of concurrent depression severity

Joseph Chilcot¹ and Ken Farrington^{2,3}

¹Psychology Department, Institute of Psychiatry, Psychology and Neuroscience, King's College London, London, UK, ²Renal Unit, Lister Hospital, Stevenage, UK and ³Centre for Health Services and Clinical Research, University of Hertfordshire, Hatfield, UK

Correspondence to: Joseph Chilcot; E-mail: joseph.chilcot@kcl.ac.uk; Twitter handle: @joe_chilcot

We have recently argued the case for empirical studies evaluating the selective withdrawal of antidepressants in patients with advanced kidney disease [1]. This was in response to a large retrospective analysis that found that haemodialysis patients who initiated selective serotonin reuptake inhibitors (SSRIs) with higher QT-prolonging potential (citalopram and escitalopram) had a significantly increased risk of sudden cardiac death [adjusted hazard ratio [HR] 1.18 [95% confidence interval (CI) 1.05–1.31]] compared with patients who initiated SSRIs with lower QT-prolonging potential (fluoxetine, fluvoxamine, paroxetine and sertraline) [2]. Furthermore, we highlighted three randomized placebo-controlled trials of SSRIs in individuals with kidney disease [3–5] that failed to show evidence of efficacy but indicated increased risks of adverse events. We concluded an existent possibility that in some kidney patients, antidepressants may be doing more harm than good, therefore consideration of withdrawing antidepressants in suitable patients may be appropriate. A recent review of the evidence base for antidepressants in the general population reports minimal benefit to the average patient with major depressive disorder and concludes 'Antidepressants should not be used for adults with major depressive disorder before valid evidence has shown that the potential beneficial effects outweigh the harmful effects' [6].

Evidence regarding the association between depression symptoms and survival in dialysis patients is unequivocal [7–9]. However, what is less clear is the role antidepressants have on survival and whether any effect is independent of depression severity. Assimon *et al.*'s [2] analysis, while compelling, does not

provide the mortality risk of being on an antidepressant versus not. We therefore went back to reanalyse survival data published previously [7] in order to explore the association between antidepressant use and survival from a large sample of haemodialysis patients ($n = 707$) in which there were 148 deaths. Our original analyses demonstrated that depression severity predicted all-cause mortality after controlling for a variety of covariates [Beck Depression Inventory-II, HR 1.03 (95% CI 1.01–1.04); Patient Health Questionnaire-9 (PHQ-9), HR 1.04 (95% CI 1.01–1.06)]. Using the same analytical methodology and model adjustments, we reran the analyses including antidepressant use within 3 months prior to the study assessment. Seventy-six patients reported being on at least one antidepressant (six missing cases). Of those on antidepressants, 36% died during the study follow-up compared with 19% of patients not on an antidepressant. In adjusted analysis that also controlled for depression severity (PHQ-9), antidepressant use was significantly associated with mortality, increasing the hazard of death 2-fold [adjusted HR 2.0 (95% CI 1.28–3.26); $P = 0.003$; see Figure 1 for survival plot]. Our previously reported findings from the original analysis remained the same, including the significance and effect size of depression severity on mortality. This suggests that the association between antidepressant use and mortality in haemodialysis patients may well be independent of concurrent depression severity. The estimated absolute risk increase of death for those on an antidepressant was 18%, with a numbers needed to harm of ~ 5 .

Received: 9.10.2019; Editorial decision: 14.10.2019

© The Author(s) 2019. Published by Oxford University Press on behalf of ERA-EDTA.

This is an Open Access article distributed under the terms of the Creative Commons Attribution Non-Commercial License (<http://creativecommons.org/licenses/by-nc/4.0/>), which permits non-commercial re-use, distribution, and reproduction in any medium, provided the original work is properly cited. For commercial re-use, please contact journals.permissions@oup.com

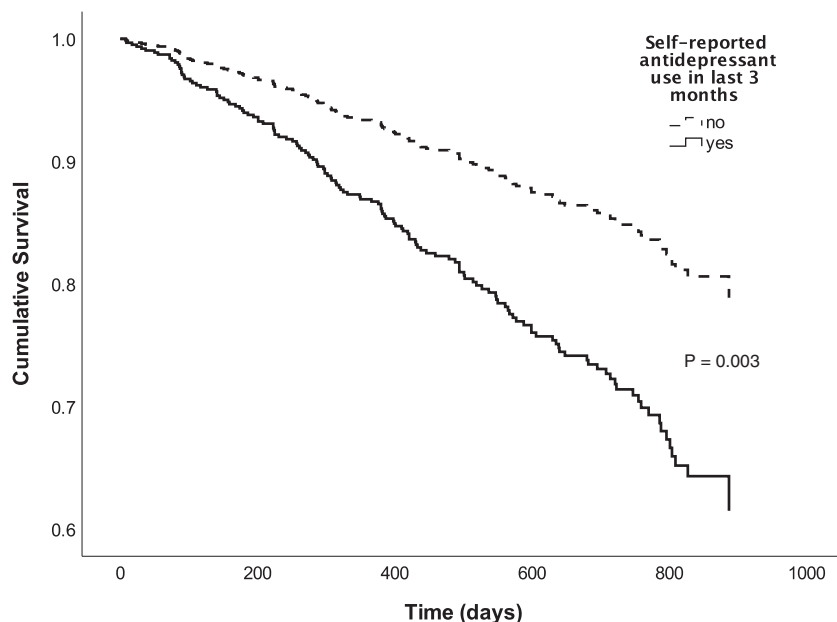


FIGURE 1: Adjusted survival plot comparing patients using an antidepressant in the previous 3 months prior to study assessment versus those who did not.

This exploratory reanalysis is limited by patient self-reported antidepressant use. We did not have data on medication type or regimen, dose or treatment vintage. Accordingly, more robust studies are needed to ascertain more reliable estimates from which to establish the absolute mortality risk increase of antidepressants in this setting. Nevertheless, we feel it is important to report this exploratory observation, which in our opinion further supports the call for empirical studies investigating the selective withdrawal of antidepressants in patients with advanced kidney disease.

FUNDING

This article presents independent research funded by the National Institute for Health Research (NIHR) under its Research for Patient Benefit Programme (grant reference number PB-PG-1112-29078). The views expressed are those of the authors and not necessarily those of the National Health Service, the NIHR or the Department of Health.

CONFLICT OF INTEREST STATEMENT

None declared.

REFERENCES

1. Chilcot J, Farrington K. The case for selective withdrawal of antidepressants in patients with advanced kidney disease. *J Am Soc Nephrol* 2019; 30: 1339–1340

2. Assimon MM, Brookhart MA, Flythe JE. Comparative cardiac safety of selective serotonin reuptake inhibitors among individuals receiving maintenance hemodialysis. *J Am Soc Nephrol* 2019; 30: 611–623
3. Blumenfeld M, Levy NB, Spinowitz B et al. Fluoxetine in depressed patients on dialysis. *Int J Psychiatry Med* 1997; 27: 71–80
4. Friedli K, Guirguis A, Almond M et al. Sertraline versus placebo in patients with major depressive disorder and undergoing haemodialysis (ASSertID): a randomised, controlled feasibility trial. *Clin J Am Soc Nephrol* 2017; 12: 280–286
5. Hedayati SS, Gregg LP, Carmody T et al. Effect of sertraline on depressive symptoms in patients with chronic kidney disease without dialysis dependence the CAST randomized clinical trial. *J Am Med Assoc* 2017; 318: 1876–1890
6. Jakobsen JC, Gluud C, Kirsch I. Should antidepressants be used for major depressive disorder? *BMJ Evidence Based Med* 2019; doi: 10.1136/bmjebm-2019-111238
7. Chilcot J, Guirguis A, Friedli K et al. Depression symptoms in haemodialysis patients predict all-cause mortality but not kidney transplantation: a cause-specific outcome analysis. *Ann Behav Med* 2018; 52: 1–8
8. Chilcot J, Davenport A, Wellsted D et al. An association between depressive symptoms and survival in incident dialysis patients. *Nephrol Dial Transplant* 2011; 26: 1628–1634
9. Farrokhi F, Abedi N, Beyene J et al. Association between depression and mortality in patients receiving long-term dialysis: a systematic review and meta-analysis. *Am J Kidney Dis* 2014; 63: 623–635