



King's Research Portal

DOI:

[10.3389/fpsy.2018.00606](https://doi.org/10.3389/fpsy.2018.00606)

Document Version

Publisher's PDF, also known as Version of record

[Link to publication record in King's Research Portal](#)

Citation for published version (APA):

Kim, J-W., Stewart, R. J., Kang, H-J., Bae, K-Y., Kim, S-W., Shin, I-S., Yoon, J-S., & Kim, J-M. (2018). Longitudinal associations between serum cytokine levels and dementia. *Frontiers in Psychiatry*. <https://doi.org/10.3389/fpsy.2018.00606>

Citing this paper

Please note that where the full-text provided on King's Research Portal is the Author Accepted Manuscript or Post-Print version this may differ from the final Published version. If citing, it is advised that you check and use the publisher's definitive version for pagination, volume/issue, and date of publication details. And where the final published version is provided on the Research Portal, if citing you are again advised to check the publisher's website for any subsequent corrections.

General rights

Copyright and moral rights for the publications made accessible in the Research Portal are retained by the authors and/or other copyright owners and it is a condition of accessing publications that users recognize and abide by the legal requirements associated with these rights.

- Users may download and print one copy of any publication from the Research Portal for the purpose of private study or research.
- You may not further distribute the material or use it for any profit-making activity or commercial gain
- You may freely distribute the URL identifying the publication in the Research Portal

Take down policy

If you believe that this document breaches copyright please contact librarypure@kcl.ac.uk providing details, and we will remove access to the work immediately and investigate your claim.



Longitudinal Associations Between Serum Cytokine Levels and Dementia

Ju-Wan Kim¹, Robert Stewart², Hee-Ju Kang¹, Kyung-Yeol Bae¹, Sung-Wan Kim¹, Il-Seon Shin¹, Jin-Sang Yoon¹ and Jae-Min Kim^{1*}

¹ Department of Psychiatry, and Depression Clinical Research Centre, Chonnam National University Medical School, Gwangju, South Korea, ² Institute of Psychiatry, King's College London, London, United Kingdom

OPEN ACCESS

Edited by:

Wael M. Y. Mohamed,
International Islamic University
Malaysia, Malaysia

Reviewed by:

Antonio Lucio Teixeira,
University of Texas Health Science
Center at Houston, United States
Monika Zilkova,
Institute of Neuroimmunology (SAS),
Slovakia

*Correspondence:

Jae-Min Kim
jmkim@chonnam.ac.kr

Specialty section:

This article was submitted to
Neurodegeneration,
a section of the journal
Frontiers in Psychiatry

Received: 30 July 2018

Accepted: 30 October 2018

Published: 19 November 2018

Citation:

Kim J-W, Stewart R, Kang H-J,
Bae K-Y, Kim S-W, Shin I-S, Yoon J-S
and Kim J-M (2018) Longitudinal
Associations Between Serum
Cytokine Levels and Dementia.
Front. Psychiatry 9:606.
doi: 10.3389/fpsy.2018.00606

Background: The purpose of this study was to investigate whether long-term inflammation is related to the incidence of dementia in a prospective observational study.

Methods: In total, 732 Korean community-dwelling elderly people >65 years were evaluated at baseline. Of the 625 without dementia, 518 (83%) were followed over a 2.4-years period, and the incidence of dementia was determined. Cytokine [interleukin (IL)-1 α , IL-1 β , IL-6, IL-8, and tumor necrosis factor (TNF)- α] levels were measured at baseline and follow-up. The individual and combined effects of cytokine levels on dementia were evaluated after adjusting for potential covariates (lifestyle factors, demographics, disability, cognitive function, and presence of the APOE e4 allele) and a Bonferroni correction.

Results: Incident dementia was associated with increased serum cytokine levels after 2 years; the association remained significant for TNF- α , IL1- α , and IL-1 β concentrations even after applying a Bonferroni correction. The analysis of the combined effects of the five cytokines showed independent associations between increases in the summed number of higher cytokine levels, between baseline and follow-up. However, incident dementia was not expected based on higher baseline pro-inflammatory cytokine levels.

Conclusion: Our results suggest that dementia may precede changes in serum cytokine levels and inflammatory processes, rather than resulting from elevated pro-inflammatory cytokines.

Keywords: cytokines, dementia, geriatric psychiatry, inflammation, longitudinal studies

INTRODUCTION

Dementia is a group of symptoms involving impairments in attention, memory, language, executive function, perception, and social cognition (1). As dementia has a high prevalence and a progressive, irreversible course in older adults (2, 3), it has become a global challenge for public health (4, 5). Understanding the etiology of dementia is essential for early diagnosis and treatment. Dementia has complex and heterogeneous etiologies, including amyloid plaques, tau-pathology, and cerebrovascular disease (6–8). Recently, the inflammatory process has received attention in the pathogenesis of dementia (9, 10).

Cytokines play a pivotal role in regulating the inflammatory response. The involvement of cytokines in dementia is supported by studies (11–13) showing that the levels of pro-inflammatory

cytokines [e.g., tumor necrosis factor alpha (TNF- α), interleukin (IL)-1 α , IL-1 β , IL-6, and IL-8] are altered. A recent meta-analysis study reported significantly higher levels of the proinflammatory cytokines TNF- α , IL-6, IL-1 β , IL-2, and IL-18 in peripheral blood samples of patients with Alzheimer's disease (AD) compared with a control group (14). However, causal relationships cannot be confirmed from case-control and cross-sectional investigations because increases in pro-inflammatory processes could be caused by disease pathophysiology (15, 16). Therefore, longitudinal studies are needed for clarification, although such studies have been scarce and have reported inconsistent findings. Some previous longitudinal studies have reported that the incidence of dementia is associated with TNF- α , IL-6, and C-reactive protein (CRP) concentrations (10, 17, 18), whereas other studies have found no relationship between baseline inflammation and future risk of dementia after adjusting for confounding factors (19, 20). These studies of inflammation-related dementia risk were conducted at a single time point, providing only the temporality of disease progression. Therefore, whether increased cytokine levels at a baseline evaluation can predict dementia risk remains unknown. To address these limitations, we analyzed data from a 2.4-years longitudinal cohort study to investigate prospectively the associations between five serum cytokine levels estimated at baseline and at follow-up with the incidence of dementia.

METHODS

Study Overview and Participants

This prospective cohort study was carried out from 2001 to 2003 in Kwangju, South Korea. Details of the study design have been described previously (21). Briefly, 732 community dwelling subjects aged >65 years from Kwangju, South Korea, were recruited from national resident registration lists. Of the 732 participants, 625 did not receive a dementia diagnosis at the baseline evaluation. Among these, 518 (83%) finished all assessments at follow-up. A secondary analysis was carried out with these 518 participants. The study was performed in accordance with the Declaration of Helsinki. Written informed consent was obtained for the study, and this study was approved by the Chonnam National University Hospital Institutional Review Board.

Baseline Sampling and Assessments

Examinations included a fully structured diagnostic interview for AD and vascular dementia, peripheral blood sampling for five serum pro-inflammatory cytokines, and a formal evaluation of covariate factors.

Dementia Evaluation

Dementia assessments were performed at the baseline and follow-up. Examinations included the Mini-Mental State Examination (MMSE) (22), the Instrumental Activities of Daily Living Scale (23), the Clinical Dementia Rating scale (24), history, and a neurological examination. Clinical researchers assigned consensus diagnoses using standard criteria for dementia (1), AD (25), and vascular dementia (26). If AD

and vascular dementia pathologies were mixed, they were diagnosed as either, using the criteria. In this study, we divided the participants into two different groups of incident dementia and no incident dementia.

Biochemical Analyses

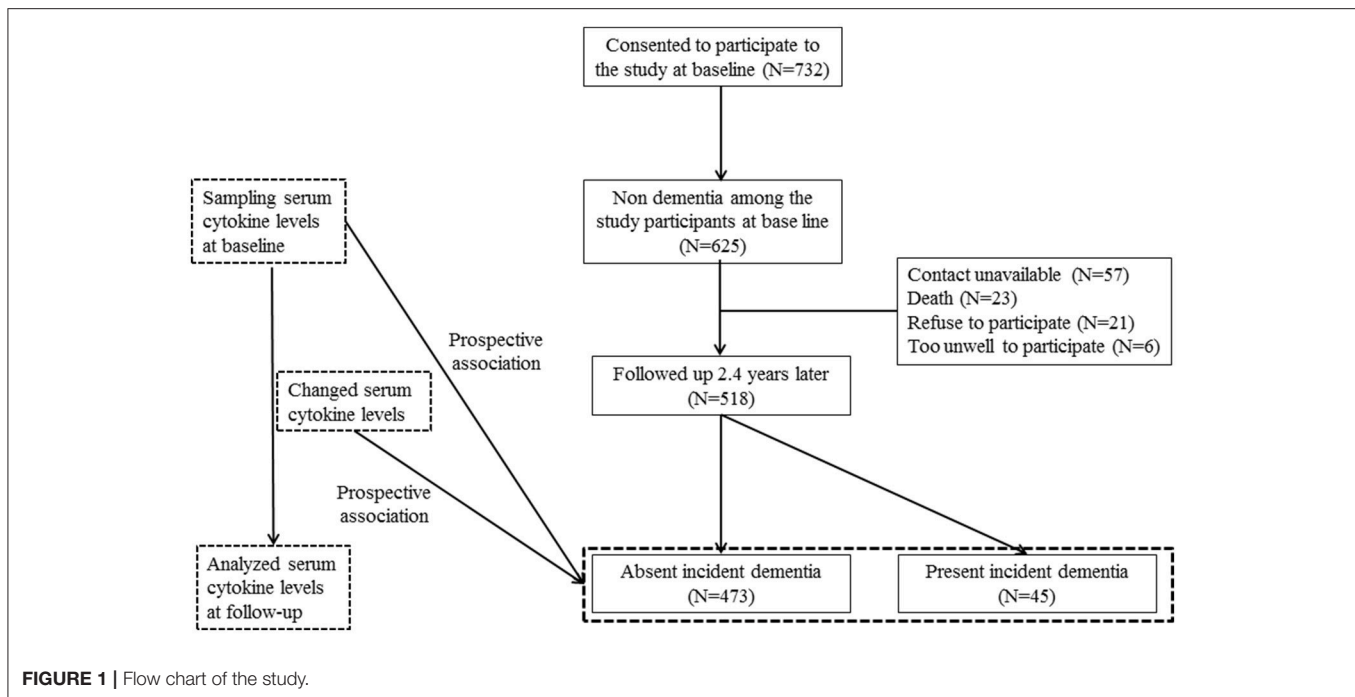
Blood samples were collected from the participants in a fasting state and were taken in the morning when possible. The blood samples were collected in EDTA tubes, centrifuged, separated into plasma aliquots, and frozen at -70°C within 2 h of collection. Biochemical assays were conducted for five serum cytokines: IL-1 α , IL-1 β , IL-6, IL-8, and TNF- α . Serum cytokine levels were analyzed using a solid-phase sandwich enzyme-linked immunosorbent assay (ELISA) kit (Invitrogen, Camarillo, CA, USA) according to the manufacturer's instructions. To reduce assay variation, all specimens were analyzed on the same day, in duplicate, in random order, by a technician blinded to the participant's status. The inter-assay coefficients of variation were 4–8% for IL-1 α , 5–9% for IL-1 β , 6–9% for IL-6, 3–6% for IL-8, and 5–7% for TNF- α . The intra-assay coefficients of variation were 4–6% for IL-1 α , 4–7% for IL-1 β , 4–5% for IL-6, 2–4% for IL-8, and 3–6% for TNF- α .

Covariates

Several potential factors that may be associated with serum cytokine levels were investigated based on previous studies (6–8). Age, gender, and education were recorded. Depression was evaluated by the community version of the Geriatric Mental State schedule (GMS) (27). Functional disability was measured by the Korean version of the World Health Organization Disability Assessment Schedule II (WHODAS II) (28). Smoking status was investigated and participants were categorized into current smokers or not current (ex- and never) smokers. History of alcohol use was ascertained from the participants, and verified by family members. Low risk alcohol drinking was defined, based on consuming more than 14 drinks per week during the previous 3 months for men or more than 7 drinks per week for women, following the guidelines from the National Institute of Alcohol Abuse and Alcoholism (29). Physical activity was checked at baseline by asking about work and leisure activities on a 4-point scale (not at all active, not very active, fairly active, and very active) according to the standard protocol (30). A summary vascular risk score was calculated by summing self-reported disorders (stroke, heart disease, hypertension, and diabetes), hypercholesterolemia (fasting cholesterol >200 mg/dl), and obesity (body mass index >25 kg/m²). The apolipoprotein E (APOE) genotype was reflected as a covariate in analyses of the relationship with AD.

Follow-Up Assessments

The follow-up was carried out in 2003 (31). Attempts were made to follow up 2 years after the baseline appointment (mean interval [standard deviation (SD)], 2.4 (0.3) years). Blood samples were collected to determine five serum pro-inflammatory cytokines, centrifuged within the hour, and stored at -70°C . The same biomedical assays were carried out using the ELISA method described above. Clinical researchers



assigned consensus diagnoses using standard criteria (1, 25, 26).

Statistical Analysis

The study design is outlined in **Figure 1**. Associations between baseline characteristics, demographics, assessment scales (MMSE, WHODAS II, and GMS depression) (27, 28, 32), smoking, alcohol, physical activity, and vascular risk score with incident dementia were analyzed using *t*- or χ^2 -tests as appropriate. Results with significant associations (*p*-value < 0.05) were reflected in subsequent multivariate analyses. Unadjusted associations between the incidence of dementia and baseline serum cytokine concentrations and changes (from baseline to follow-up) were investigated using the Mann-Whitney *U*-test. The baseline levels and changes in levels were recorded as binary values of “lower” or “higher” (i.e., below or above the median value). Odds ratios and 95% confidence intervals were calculated for the associations between the baseline cytokine values and increases in cytokine levels during the follow-up in subjects with dementia. These associations were analyzed before and after adjusting for significant baseline covariates using logistic regression models. Because cytokines have demonstrated additive and synergistic effects on AD (21), the combined effects of the pro-inflammatory cytokines were calculated by summing the number of cytokines with higher levels at baseline and the number of cytokines with higher levels at the follow-up, and then assigning ordinal values (0, 1, 2, 3, 4, 5) to each. Associations between baseline values and the summed number of higher cytokine levels with the incidence of dementia were assessed initially by the χ^2 -test for a linear trend (i.e., 1 df), and then with the same logistic regression models to adjust for covariates. The Bonferroni correction was applied to maintain an overall type I error rate of 0.05 against the multiple comparisons. All statistical

analyses were performed with SPSS software (ver. 21.0; SPSS Inc., Chicago, IL, USA).

RESULTS

Participant Characteristics

The recruitment procedure for the baseline and follow-up aspects of the study and distribution of dementia diagnoses are shown in **Figure 1**. Among the 625 subjects without dementia at the baseline evaluation, 518 (83%) completed all evaluations. At follow-up, incident dementia [mean interval (SD), 2.4 (0.3) years] was diagnosed in 45 participants (8.7%): 34 (6.6%) had AD, seven (1.4%) had vascular dementia, and four had “other” dementia (0.8%). Median [interquartile range (IQR)] IL-1 α , IL-1 β , IL-6, IL-8, and TNF- α levels were 40.3 (32.3–48.3), 12.0 (11.1–12.9), 9.5 (8.9–10.5), 20.1 (18.7–23.1), and 40.7 (37.5–43.9) pg/ml, respectively. Baseline characteristics are compared by the dementia diagnosis in **Supplementary Table 1**. Incident dementia was associated with older age, lower education, lower MMSE score, higher WHODAS II score, lower physical activity, and presence of the APOE e4 allele. The median (IQR) changes from baseline to follow-up for IL-1 α , IL-1 β , IL-6, IL-8, and TNF- α levels were +0.3 (0.3–1.9), +0.6 (0.4–0.8), +0.6 (0.6–4.0), +0.3 (0.1–1.8), and +1.2 (1.0–3.9), pg/ml, respectively. Baseline levels of and follow-up changes in serum cytokine concentrations according to the dementia diagnosis are shown in **Supplementary Table 2**.

Baseline and Follow-Up Concentrations of Serum Cytokines by Dementia Incidence

Unadjusted associations between serial serum cytokine levels and incident dementia are summarized in **Table 1**. Incident dementia was associated with increases in all five serum

TABLE 1 | Baseline levels of and follow-up changes in serum cytokine concentrations by incident dementia status.

	No incident dementia (N = 473)	Incident dementia (N = 45)	P-value*
BASELINE VALUES			
Tumor necrosis factor- α	40.3 (32.5–48.5)	40.7 (31.7–50.4)	0.921
Interleukin-1 α	12.1 (11.1–12.9)	11.9 (11.2–14.1)	0.505
Interleukin-1 β	9.5 (8.9–10.5)	9.3 (8.8–10.5)	0.981
Interleukin-6	20.0 (18.0–22.3)	21.0 (17.7–25.0)	0.146
Interleukin-8	40.4 (37.3–43.5)	43.0 (40.5–50.3)	<0.001
FOLLOW-UP VALUES			
Tumor necrosis factor- α	42.1 (36.5–47.7)	42.1 (37.1–47.1)	0.469
Interleukin-1 α	13.2 (12.2–14.2)	13.9 (13.2–14.6)	0.001
Interleukin-1 β	10.1 (9.5–11.1)	11.2 (10.0–12.6)	<0.001
Interleukin-6	22.1 (19.5–24.7)	24.6 (22.6–28.1)	<0.001
Interleukin-8	41.1 (38.4–44.6)	45.0 (38.5–53.5)	0.002
CHANGED VALUES			
Tumor necrosis factor- α	+1.2 (1.0–1.4)	+4.5 (–0.3–6.0)	0.002
Interleukin-1 α	+0.3 (0.3–1.9)	+1.8 (1.1–2.0)	0.001
Interleukin-1 β	+0.6 (0.6–0.7)	+2.2 (0.0–2.6)	<0.001
Interleukin-6	+0.6 (0.6–3.3)	+4.8 (0.8–6.0)	0.005
Interleukin-8	+0.3 (0.0–0.6)	+3.6 (–3.9–7.6)	0.100

*Mann Whitney test, Bold character denotes statistical significance after Bonferroni correction. Data are median (IQR).

cytokines during the follow-up, and the strength of the significance remained for TNF- α , IL1- α , and IL-1 β after applying the Bonferroni correction. Incident dementia was associated with a higher IL-8 level at baseline, and the strength of the significance remained after applying the Bonferroni correction. The same analyses were repeated by dementia diagnosis and are presented in **Supplementary Table 2**. Incident AD was significantly associated with increases in IL1- α , IL-1 β , and IL-6 levels but not with baseline cytokine levels after applying Bonferroni corrections. Incident vascular dementia was not associated any cytokine value.

Binary Higher Baseline Levels and Increasing Follow-up Level Categories of Serum Cytokines by Incident Dementia Status

The logistic regression results show a positive relationship between baseline and follow-up cytokine levels with the incidence of dementia (**Table 2**). Incident dementia was associated with IL-8 levels at baseline in unadjusted analyses. However, the association was not significant after adjusting for covariates. Incident dementia was significantly associated with higher levels of all five cytokines before and after adjustment, even after applying the Bonferroni correction. Incident dementia was not associated with higher pro-inflammatory cytokine level category at baseline before or after adjusting for covariates.

TABLE 2 | Associations of incident dementia with (binary) higher baseline cytokine levels and (binary) more pronounced increase in levels over follow-up.

	Unadjusted	Adjusted ^a
BASELINE HIGHER LEVELS		
Tumor necrosis factor- α	1.05 (0.57–1.93)	0.83 (0.43–1.60)
Interleukin-1 α	0.97 (0.47–1.59)	1.29 (0.65–2.56)
Interleukin-1 β	0.78 (0.42–1.45)	1.09 (0.56–2.14)
Interleukin-6	1.16 (0.63–2.14)	1.22 (0.63–2.36)
Interleukin-8	2.67 (1.37–5.21) [†]	2.56 (1.25–5.23) [*]
MORE PRONOUNCED INCREASE IN LEVELS		
Tumor necrosis factor- α	7.83 (3.92–15.63)[‡]	8.44 (4.02–17.70)[‡]
Interleukin-1 α	7.26 (3.31–15.95)[‡]	8.20 (3.58–18.82)[‡]
Interleukin-1 β	7.16 (3.64–14.09)[‡]	7.19 (3.47–14.94)[‡]
Interleukin-6	5.23 (2.63–10.40)[‡]	5.01 (2.43–10.32)[‡]
Interleukin-8	3.80 (2.02–7.16)[‡]	3.73 (1.90–7.32)[‡]

^aAdjusted for age, education, scores on Mini-Mental State Examination and World Health Organization Disability Assessment Scale II, APOE and physical activity.

*p-value < 0.05; [†]p-value < 0.01; [‡]p-value < 0.001.

Bold character denotes statistical significance after Bonferroni correction.

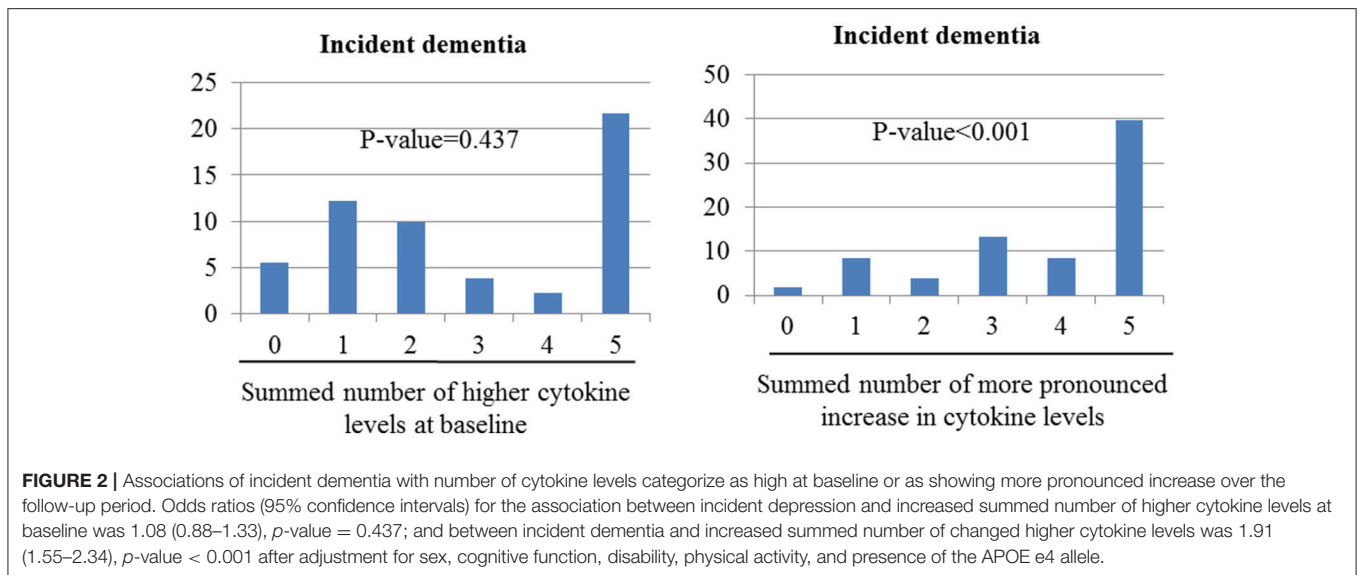
Data are displayed as odds ratios (95% confidence intervals).

Sums of Higher Baseline Cytokine Levels and Increases in Cytokine Levels by Dementia Incidence

Figure 2 shows the combined effects of baseline and follow-up cytokine levels on dementia incidence. Incident dementia was associated with increases in the number of changes to higher cytokine levels during follow-up in unadjusted analyses ($\chi^2 = 50.91$; p-value < 0.001). However, no association was found between the incidence of dementia and increases in the summed number of higher cytokine levels at baseline ($\chi^2 = 0.604$; p = 0.438). After adjusting for older age, lower education, lower MMSE score, higher WHODAS II score, lower physical activity, and presence of the APOE e4 allele, the incidence of dementia increased significantly with increases in the summed number of changes to higher cytokine levels at follow-up. No association was found between incident dementia and increases in the summed number of higher cytokine levels at baseline.

DISCUSSION

The principal findings of this study were that the incidence of dementia was significantly associated with increases in all five serum cytokines, considered as both continuous and dichotomized variables, at follow-up, and the strength of these associations remained significant after applying the Bonferroni correction and relevant adjustments. The analysis of the combined effects of the five cytokines showed independent associations between increases in the summed number of higher cytokine levels between baseline and follow-up before and after adjustment. The incidence of dementia was only predicted by higher IL-8 levels at baseline, but this association was no longer significant in a multivariate analysis after applying the Bonferroni correction.



Inflammation may be an important mechanism underlying dementia (33, 34); however, it is unclear whether the inflammatory response is associated with the onset of dementia or is an outcome of dementia. To understand how inflammatory cytokines change, and possibly exert negative effects in dementia, a prospective cohort study with numerous inflammatory markers is needed. Very few studies have incorporated data from multiple time points in a clinical sample (35–37). Among them, only one study reported no association between AD and longitudinal inflammation (35), and two studies described an association between increases in inflammatory markers from baseline to follow-up and subsequent AD (36, 37). In this study, incident dementia was significantly associated with increases in cytokine levels during the study period. Several potential mechanisms might explain these findings. First, the level of inflammation may serve as a marker of active pathological processes. Hyperphosphorylation of the tau protein forming neurofibrillary tangles and amyloid beta ($A\beta$) accumulation in plaques are trademarks of AD progression (38). The abnormal $A\beta$ clearance process results from the distortion of astrocytes or microglia to a pro-inflammatory state. This process is represented by elevated levels of pro-inflammatory cytokines and dysregulation of clear $A\beta$, and it leads to $A\beta$ accumulation and worsened immune activation (39). In this study, 41 of 45 (91.1%) participants with dementia had AD and vascular dementia. Although the etiologies of AD and vascular dementia may be different, and thus lead to different disease outcomes, they may begin as a similar cascade of cytokine production in response to neuronal injury (8, 38, 39). Increased cytokine levels were significantly associated with incident AD but not with vascular dementia. However, due to the small sample size, there is a possibility of a type II error in the non-significant associations with vascular dementia. Second, it is also possible that cytokines increased due to causes other than dementia during the follow-up period. For example, normal aging can cause an increase in peripheral cytokines (33, 40). Our longitudinal observations support this

hypothesis. Five cytokines increased during the follow-up period in both the dementia and control groups. The term sensitization is often used to describe induction of an immune response. Here, the incidence of dementia was associated with an increase in cytokine levels, but not with the absolute concentrations of baseline cytokine levels. Therefore, when conditions other than aging occur that can accelerate inflammation, such as amyloid plaques and neurofibrillary tangles (9), depression (9), genetic conditions (41), infections (42), trauma, and vascular events (8), immune sensitization can occur, which can accelerate cognitive impairment.

Previous studies of cross-sectional cytokine levels as predictors of the incidence of dementia have resulted in heterogeneous findings (35, 43–45). Those studies were limited by differences in study design, such as participant characteristics. In our study, baseline IL-8 level was associated with incident dementia in unadjusted analyses, but was not significant in the multivariate analysis after applying the Bonferroni correction. Furthermore, the impacts of cytokines have been revealed to be synergistic and, given the inconsistent outcome of a single cytokine level, the combined effect of multiple cytokines represents a more practical approach (21, 46). No associations were detected when high cytokine levels were summed. Together, these data do not support the hypothesis that cytokines result in dementia-related dysfunction but, instead, suggest that cytokine levels are elevated by dementia-related processes.

This study has several strengths. Cytokine levels were assessed serially, which could help to clarify causal relationships. In addition, the follow-up rate was reasonable and a number of potential covariates were considered in the analyses. This study also has several limitations. First, due to limited resources, we only measured five cytokines, and other important anti-inflammatory (e.g., IL-4 and IL-10) and pro-inflammatory (e.g., IL-13 and IL-18) cytokines were not evaluated (47). It is important to determine the exact function of various cytokines and disease progression. Overproduction of several

cytokines could result in damage to neurons, and these cytokines may play a role in the progression of dementia, but their protective effects have also been considered (47). Second, we collected blood samples from the periphery to measure inflammation in the central nervous system. Several studies have been conducted using imaging technology, including positron emission tomography, to measure neuroinflammation directly in subjects with dementia (48, 49). More studies are required to demonstrate the relationships between these cytokines and dementia. Third, due to protein degradation, it is recommended that blood samples be examined immediately. In this instance, due to technical difficulties, they were centrifuged at 3,000 rpm for 10 min, and sera were stored at -70°C until we finished specimen collection. However, most studies follow this procedure (20, 50). Fourth, the small set of covariate-adjusted analyses leaves the possibility of confounding bias. For example, we adjusted for age, education, MMSE, WHODAS, and physical activity but not for alcohol, smoking, or body mass index, which did affect the associations between cytokine levels and dementia, although these factors were not significantly associated with incident dementia at the follow-up (**Supplementary Table 1**). In particular, we could not provide an accurate diagnosis for smoking and alcohol use. Varying the cutoff points may lead to a different interpretation of the results of a trial. Thus, our adjustment might have been suboptimal. Fifth, conclusions regarding dementia that fully reflect the complex disease status are improbable, as stated above. In this study, due to a limitation in the study design, the probability that increases in cytokines may arise transiently, as in acute infectious disease, or continuously because of chronic inflammatory disease, may have influenced the heterogeneity, and both diseases may contribute to incident dementia. In addition, it was difficult to diagnose mixed dementia due to a lack of brain imaging data. However, this limitation is common in most epidemiological studies. Finally, because this study did not specify the timing of the dementia diagnosis, it was not possible to state clearly that dementia preceded inflammation. Furthermore, only 2 years of follow-up visits were carried out. Because dementia progresses over

decades, having a longer follow-up is crucial to identifying the developmental trajectory of the disease. Additional follow-up studies will be needed to address these limitations.

Our findings suggest that incident dementia may lead changes in serum cytokine levels and inflammation, rather than resulting from elevated pro-inflammatory cytokines. It has been reported that patients with dementia, particularly those at more advanced stages, are at a higher risk for developing stroke and depression (51, 52), which could, theoretically, be mediated by inflammation. As mentioned above, our findings must be replicated in future studies with more cytokines. Furthermore, interactions between cytokine levels and genes need further assessment, as there is sufficient evidence that the transcriptional activity of specific polymorphisms influences cytokine production (53).

AUTHOR CONTRIBUTIONS

J-WK conducted the data analysis and drafted the article. RS and H-JK helped to analyze the data and to draft the article. K-YB, S-WK, I-SS, and J-SY helped to recruit the participant and perform dementia assessment and management. All authors approved the final version of manuscript to be published. J-MK had full access to all of the data in the study and take responsibility for the integrity of the data and the accuracy of the data analysis.

FUNDING

This study was supported by a grant (BCRI 18018) Chonnam National University Hospital Biomedical Research Institute to J-MK.

SUPPLEMENTARY MATERIAL

The Supplementary Material for this article can be found online at: <https://www.frontiersin.org/articles/10.3389/fpsy.2018.00606/full#supplementary-material>

REFERENCES

- American Psychiatric Association. *Diagnostic and Statistical Manual of Mental Disorder*. 5th ed. Washington, DC: American Psychiatric Press (2013).
- Tai SY, Huang SW, Hsu CL, Yang CH, Chou MC, Yang YH. Screening dementia in the outpatient department: patients at risk for dementia. *ScientificWorldJournal* (2014) 2014:138786. doi: 10.1155/2014/138786
- Thies W, Bleiler L. Alzheimer's disease facts and figures. *Alzheimers Dement.* (2011) 7:208–44. doi: 10.1016/j.jalz.2011.02.004
- Martin P, Matthew P, Maëlen G. *World Alzheimer Report 2013: Journey of Caring a Analysis of Long-Term Care for Dementia* (2013). Available online at: <http://www.alz.co.uk/research/WorldAlzheimerReport2013.pdf?m>
- Schneider J, Murray J, Banerjee S, Mann A. EURO CARE: a cross-national study of co-resident spouse carers for people with Alzheimer's disease: I-factors associated with career burden. *Int J Geriatr Psychiatry* (1999) 14: 651–61.
- Carlson MC, Helms MJ, Steffens DC, Burke JR, Potter GG, Plassman BL: Midlife activity predicts risk of dementia in older male twin pairs. *Alzheimers Dement.* (2008) 4: 324–31. doi: 10.1016/j.jalz.2008.07.002
- van den Biggelaar AH, Gussekloo J, de Craen AJ, Frolich M, Stek ML, van der Mast RC, et al. Inflammation and interleukin-1 signaling network contribute to depressive symptoms but not cognitive decline in old age. *Exp Gerontol.* (2007) 42: 693–701. doi: 10.1016/j.exger.2007.01.011
- Tarkowski E, Rosengren L, Blomstrand C, Wikkelso C, Jensen C, Ekholm S, et al. Intrathecal release of proand anti-inflammatory cytokines during stroke. *Clin Exp Immunol.* (1997) 110:492–9. doi: 10.1046/j.1365-2249.1997.4621483.x
- Akiyama H, Barger S, Barnum S, Bradt B, Bauer J, Cole GM, et al. Inflammation and Alzheimer's disease. *Neurobiol Aging* (2000) 21:383–421. doi: 10.1016/S0197-4580(00)00124-X
- Tan ZS, Beiser AS, Vasan RS, Roubenoff R, Dinarello CA, Harris TB, et al. Inflammatory markers and the risk of Alzheimer disease: the Framingham Study. *Neurology* (2007) 68:1902–8. doi: 10.1212/01.wnl.0000263217.36439.da
- Tarkowski E, Liljeroth AM, Minthon L, Tarkowski A, Wallin A, Blennow K. Cerebral pattern of pro- and anti-inflammatory cytokines

- in dementias. *Brain Res Bull.* (2003) 61:255–60. doi: 10.1016/S0361-9230(03)00088-1
12. Dursun E, Gezen-Ak D, Hanagasi H, Bilgiç B, Lohmann E, Ertan S, et al. The interleukin 1 alpha, interleukin 1 beta, interleukin 6 and alpha-2-macroglobulin serum levels in patients with early or late onset Alzheimer's disease, mild cognitive impairment or Parkinson's disease. *J Neuroimmunol.* (2015) 283:50–7. doi: 10.1016/j.jneuroim.2015.04.014
 13. Swardfager W, Lanctôt K, Rothenburg L, Wong A, Cappell J, Herrmann N. A meta-analysis of cytokines in Alzheimer's disease. *Biol Psychiatry* (2010) 68:930–41. doi: 10.1016/j.biopsych.2010.06.012
 14. Lai KSP, Liu CS, Rau A, Lanctot KL, Kohler CA, Pakosh M, et al. Peripheral inflammatory markers in Alzheimer's disease: a systematic review and meta-analysis of 175 studies. *J Neurol Neurosurg Psychiatry* (2017) 88:876–82. doi: 10.1136/jnnp-2017-316201
 15. Metti AL, Cauley JA. How predictive of dementia are peripheral inflammatory markers in the elderly? *Neurodegener Dis Manag.* (2012) 2:609–22. doi: 10.2217/nmt.12.68
 16. Wyss-Coray T. Inflammation in Alzheimer disease: driving force, bystander or beneficial response? *Nat Med.* (2006) 12:1005–15. doi: 10.1038/nm1484
 17. Engelhart MJ, Geerlings MI, Meijer J, Kiliaan A, Ruitenbergh A, van Swieten JC, et al. Inflammatory proteins in plasma and the risk of dementia: the Rotterdam study. *Arch Neurol.* (2004) 61:668–72. doi: 10.1001/archneur.61.5.668
 18. Schmidt R, Schmidt H, Curb JD, Masaki K, White LR, Launer LJ. Early inflammation and dementia: a 25-year follow-up of the Honolulu-Asia Aging Study. *Ann Neurol.* (2002) 52:168–74. doi: 10.1002/ana.10265
 19. Eriksson UK, Pedersen NL, Reynolds CA, Hong MG, Prince JA, Gatz M, et al. Associations of gene sequence variation and serum levels of C-reactive protein and interleukin-6 with Alzheimer's disease and dementia. *J Alzheimers Dis.* (2011) 23:361–9. doi: 10.3233/JAD-2010-101671
 20. Ravaglia G, Forti P, Maioli F, Chiappelli F, Tumini E, Mariani E, et al. Blood inflammatory markers and risk of dementia: The Conselice Study of Brain Aging. *Neurobiol Aging* (2007) 28:1810–20. doi: 10.1016/j.neurobiolaging.2006.08.012
 21. Kang HJ, Kim JM, Kim SW, Shin IS, Park SW, Kim YH, et al. Associations of cytokine genes with Alzheimer's disease and depression in an elderly Korean population. *J Neurol Neurosurg Psychiatry* (2015) 86:1002–7. doi: 10.1136/jnnp-2014-308469
 22. Park JH, Kwon YC. Modification of the mini-mental state examination for use in the elderly in a non-western society: Part I. Development of Korean version of Mini-Mental State Examination. *Int J Geriatr Psychiatry* (1990) 5:381–7. doi: 10.1002/gps.930050606
 23. Lawton MP, Brody EM. Assessment of older people: self-maintaining and instrumental activities of daily living. *Gerontologist* (1969) 9:179–186. doi: 10.1093/geront/9.3_Part_1.179
 24. Hughes CP, Berg L, Danziger WL, Coben LA, Martin RL. A new clinical scale for the staging of dementia. *Br J Psychiatry* (1982) 140:566–72. doi: 10.1192/bjp.140.6.566
 25. McKhann G, Drachman D, Folstein M, Katzman R, Price D, Stadlan EM. Clinical diagnosis of Alzheimer's disease: report of the NINCDS-ADRDA Work Group under the auspices of Department of Health and Human Services Task Force on Alzheimer's Disease. *Neurology* (1984) 34:939–44. doi: 10.1212/WNL.34.7.939
 26. Román GC, Goldstein M. Facts, myths, and controversies in vascular dementia. *N Engl J Med.* (1993) 329:63.
 27. Copeland JR, Dewey ME, Griffiths-Jones HM. A computerized psychiatric diagnostic system and case nomenclature for elderly subjects: GMS and AGE-CAT. *Psychol Med.* (1986) 16:89–99. doi: 10.1017/S0033291700057779
 28. Kim JM, Stewart R, Glozier N, Prince M, Kim SW, Yang SJ, et al. Physical health, depression and cognitive function as correlates of disability in an older Korean population. *Int J Geriatr Psychiatry* (2005) 20:160–7. doi: 10.1002/gps.1266
 29. National Institute of Alcohol Abuse and Alcoholism. *The Physicians' Guide to Helping Patients With Alcohol Problems.* Bethesda, MD: National Institutes of Health Publication (1995). p. 95–3769.
 30. Prince M. 10/66 Dementia Research Group. Care arrangements for people with dementia in developing countries. *Int J Geriatr Psychiatry* (2004) 19:170–7. doi: 10.1002/gps.1046
 31. Kim JM, Stewart R, Kim SW, Yang SJ, Shin IS, Yoon JS. Predictive value of folate, vitamin B12 and homocysteine levels in late-life depression. *Br J Psychiatry* (2008) 192:268–74. doi: 10.1192/bjp.bp.107.039511
 32. Folstein MF, Folstein SE, McHugh PR. "Mini-Mental State": a practical method for grading the cognitive state of patients for the clinician. *J Psychiatr Res.* (1975) 12:189–98. doi: 10.1016/0022-3956(75)90026-6
 33. Brüüngaard H, Pedersen BK. Age-related inflammatory cytokines and disease. *Immunol Allergy Clin North Am.* (2003) 23:15–39. doi: 10.1016/S0889-8561(02)00056-5
 34. Launer LJ. Nonsteroidal anti-inflammatory drugs and Alzheimer disease. What's next? *JAMA* (2003) 289:2865–7. doi: 10.1001/jama.289.21.2865
 35. Lanzrein AS, Johnston CM, Perry VH, Jobst KA, King Em, Smith AD. Longitudinal study of inflammatory factors in serum, cerebrospinal fluid, and brain tissue in Alzheimer's disease: interleukin-1b, interleukin-6, interleukin-1 receptor antagonist, tumornecrosis factor-a, the soluble tumor necrosis factor receptors I and II, and a-1-antichymotrypsin. *Alzheimer Dis Assoc Disord.* (1998) 12:215–27.
 36. Leung R, Proitsi P, Simmons A, Lunnon K, Guntert A, Kronenberg D, et al. Inflammatory proteins in plasma are associated with severity of Alzheimer's disease. *PLoS ONE* (2013) 8:e64971. doi: 10.1371/journal.pone.0064971
 37. Sundelöf J, Kilander L, Helmersson J, Larsson A, Ronnema E, Degerman-Gunnarsson M, et al. Systemic inflammation and the risk of Alzheimer's disease and dementia: a prospective population-based study. *J Alzheimers Dis.* (2009) 18:79–87. doi: 10.3233/JAD-2009-1126
 38. Kumar A, Singh A, Ekavali. A review on Alzheimer's disease pathophysiology and its management: an update. *Pharmacol Rep.* (2015) 67:195–203. doi: 10.1016/j.pharep.2014.09.004
 39. Zheng C, Zhou XW, Wang JZ. The dual roles of cytokines in Alzheimer's disease: update on interleukins, TNF- α , TGF- β and IFN- γ . *Transl Neurodegener.* (2016) 5:1–15. doi: 10.1186/s40035-016-0054-4
 40. Lee DH, Kim M, Kim M, LeeYJ, Yoo HJ, Lee SH, et al. Age-dependent alterations in serum cytokines, peripheral blood mononuclear cell cytokine production, natural killer cell activity, and prostaglandin F2 α . *Immunol Res.* (2017) 65:1009–16. doi: 10.1007/s12026-017-8940-0
 41. Cribbs DH, Berchtold NC, Perreau V, Coleman PD, Rogers J, Tenner AJ, et al. Extensive innate immune gene activation accompanies brain aging, increasing vulnerability to cognitive decline and neurodegeneration: a microarray study. *J Neuroinflammation* (2012) 9:1–18. doi: 10.1186/1742-2094-9-179
 42. Perry VH, Cunningham C, Holmes C. Systemic infections and inflammation affect chronic neurodegeneration. *Nat Rev Immun.* (2007) 7:161–7. doi: 10.1038/nri2015
 43. Miwa K, Okazaki S, Sakaguchi M, Mochizuki H, Kitagawa K. Interleukin-6, interleukin-6 receptor gene variant, small-vessel disease and incident dementia. *Eur J Neurol.* (2016) 23:656–63. doi: 10.1111/ene.12921
 44. Franciosi S, Choi HB, Kim SU, McLarnon JG. IL-8 enhancement of amyloid-beta (A β 1-42)-induced expression and production of pro-inflammatory cytokines and COX-2 in cultured human microglia. *J Neuroimmunol.* (2005) 159:66–74. doi: 10.1016/j.jneuroim.2004.10.006
 45. Richartz E, Stransky E, Batra A, Simon P, Lewczuk P, Buchkremer G, et al. Decline of immune responsiveness: a pathogenic factor in Alzheimer's disease? *J Psychiatr Res.* (2005) 39:535–43. doi: 10.1016/j.jpsychires.2004.12.005
 46. Schiepers OJ, Wichers MC, Maes M. Cytokines and major depression. *Prog Neuropsychopharmacol Biol Psychiatry* (2005) 29:201–17. doi: 10.1016/j.pnpbp.2004.11.003
 47. Zhang F, Jiang L. Neuroinflammation in Alzheimer's disease. *Neuropsychiatr Dis Treat.* (2015) 11:243–56. doi: 10.2147/NDT.S75546
 48. Herholz K, Carter SF, Jones M. Positron emission tomography imaging in dementia. *Br J Radiol.* (2007) 80:S160–7. doi: 10.1259/bjr/97295129
 49. Nordberg A, Rinne JO, Kadir A, Långström B. The use of PET in Alzheimer disease. *Nat Rev Neurol.* (2010) 6:78–87. doi: 10.1038/nrneuro.2009.217
 50. Baune BT, Ponath G, Golledge J, Varga G, Arolt V, Rothermundt M, et al. Association between IL-8 cytokine and cognitive performance in an elderly

- general population—the MEMO-Study. *Neurobiol Aging* (2008) 29:937–44. doi: 10.1016/j.neurobiolaging.2006.12.003
51. Bunn F, Burn AM, Goodman C, Rait G, Norton S, Robinson L, et al. Comorbidity and dementia: a scoping review of the literature. *BMC Med.* (2014) 12:192. doi: 10.1186/s12916-014-0192-4
 52. Kitching D. Depression in dementia. *Aust Prescr.* (2015) 38:209–11. doi: 10.18773/austprescr.2015.071
 53. de Craen AJ, Posthuma D, Remarque EJ. Heritability estimates of innate immunity: an extended twin study. *Genes Immun.* (2005) 6:167–70. doi: 10.1038/sj.gene.6364162

Conflict of Interest Statement: The authors declare that the research was conducted in the absence of any commercial or financial relationships that could be construed as a potential conflict of interest.

Copyright © 2018 Kim, Stewart, Kang, Bae, Kim, Shin, Yoon and Kim. This is an open-access article distributed under the terms of the Creative Commons Attribution License (CC BY). The use, distribution or reproduction in other forums is permitted, provided the original author(s) and the copyright owner(s) are credited and that the original publication in this journal is cited, in accordance with accepted academic practice. No use, distribution or reproduction is permitted which does not comply with these terms.