



King's Research Portal

DOI:

[10.1016/j.nicl.2018.03.001](https://doi.org/10.1016/j.nicl.2018.03.001)

Document Version

Peer reviewed version

[Link to publication record in King's Research Portal](#)

Citation for published version (APA):

Wilson, H., Giordano, B., Turkheimer, F. E., Chaudhuri, K. R., & Politis, M. (2018). Serotonergic dysregulation is linked to sleep problems in Parkinson's disease. *NeuroImage: Clinical*, 18, 630-637.
<https://doi.org/10.1016/j.nicl.2018.03.001>

Citing this paper

Please note that where the full-text provided on King's Research Portal is the Author Accepted Manuscript or Post-Print version this may differ from the final Published version. If citing, it is advised that you check and use the publisher's definitive version for pagination, volume/issue, and date of publication details. And where the final published version is provided on the Research Portal, if citing you are again advised to check the publisher's website for any subsequent corrections.

General rights

Copyright and moral rights for the publications made accessible in the Research Portal are retained by the authors and/or other copyright owners and it is a condition of accessing publications that users recognize and abide by the legal requirements associated with these rights.

- Users may download and print one copy of any publication from the Research Portal for the purpose of private study or research.
- You may not further distribute the material or use it for any profit-making activity or commercial gain
- You may freely distribute the URL identifying the publication in the Research Portal

Take down policy

If you believe that this document breaches copyright please contact librarypure@kcl.ac.uk providing details, and we will remove access to the work immediately and investigate your claim.

Accepted Manuscript

Serotonergic dysregulation is linked to sleep problems in Parkinson's disease

Heather Wilson, Beniamino Giordano, Federico E. Turkheimer, Kallol Ray Chaudhuri, Marios Politis



PII: S2213-1582(18)30071-8
DOI: doi:[10.1016/j.nicl.2018.03.001](https://doi.org/10.1016/j.nicl.2018.03.001)
Reference: YNICL 1323
To appear in: *NeuroImage: Clinical*
Received date: 17 June 2017
Revised date: 22 February 2018
Accepted date: 1 March 2018

Please cite this article as: Heather Wilson, Beniamino Giordano, Federico E. Turkheimer, Kallol Ray Chaudhuri, Marios Politis, Serotonergic dysregulation is linked to sleep problems in Parkinson's disease. The address for the corresponding author was captured as affiliation for all authors. Please check if appropriate. Ynicl(2017), doi:[10.1016/j.nicl.2018.03.001](https://doi.org/10.1016/j.nicl.2018.03.001)

This is a PDF file of an unedited manuscript that has been accepted for publication. As a service to our customers we are providing this early version of the manuscript. The manuscript will undergo copyediting, typesetting, and review of the resulting proof before it is published in its final form. Please note that during the production process errors may be discovered which could affect the content, and all legal disclaimers that apply to the journal pertain.

Serotonergic dysregulation is linked to sleep problems in Parkinson's disease

Heather Wilson,¹ Beniamino Giordano,¹ Federico E. Turkheimer,^{2,3} Kallol Ray Chaudhuri,⁴ and Marios Politis¹

¹Neurodegeneration Imaging Group, Department of Basic and Clinical Neuroscience, Institute of Psychiatry, Psychology and Neuroscience (IoPPN), King's College London, London, UK

²Division of Brain Sciences, Imperial College London, Hammersmith Hospital, London, UK

³Department of Neuroimaging, Institute of Psychiatry, King's College London, London, UK

⁴Parkinson's Centre of Excellence, Department of Neurology, King's College Hospital Foundation Trust, UK

Number tables/figures: 2/4

Word count abstract: 249

Word count text: 3,001

Supplemental Data: Table e-1

Correspondence to: Marios Politis, Neurodegeneration Imaging Group, Department of Clinical Neuroscience, Maurice Wohl Clinical Neuroscience Institute, Institute of Psychiatry, Psychology and Neuroscience (IoPPN), King's College London, 125 Coldharbour Lane, Camberwell, London SE5 9NU, UK. E-mail: marios.politis@kcl.ac.uk

Abbreviations: 5-HT = Hydroxytryptophan (serotonin); BP_{ND} = Non-displaceable Binding Potential; DASB = [N,N-dimethyl-2-(2-amino-4-cyanophenylthio) benzylamine]; EDS = Excessive Daytime Somnolence; ROI = Region of Interest; RBD = Rapid eye movement Behaviours Disorders; SERT = Serotonin Transporter

Abstract

Introduction: Sleep disturbances are common non-motor symptoms in Parkinson's disease (PD). Experimental studies suggest involvement of the serotonergic system in the regulation of sleep and arousal. Using [^{11}C]DASB positron emission tomography, a marker of serotonin transporter availability, we investigated whether sleep dysfunction is associated with serotonergic dysfunction in PD.

Methods: We studied 14 PD patients with sleep dysfunction, 14 PD without sleep dysfunction, and 12 healthy controls. Groups were matched for age, disease duration, severity of motor symptoms, daily intake of levodopa equivalent units, body-mass-index, depression and fatigue. [^{11}C]DASB non-displaceable binding potential (BP_{ND}) was calculated for regions with a role in the regulation of sleep and arousal.

Results: [^{11}C]DASB BP_{ND} was reduced by 32-49% in PD patients with sleep dysfunction, and 14-25% in PD without sleep dysfunction, compared to healthy controls. PD patients with sleep dysfunction had lower [^{11}C]DASB BP_{ND} in caudate ($P<0.01$), putamen ($P<0.001$), ventral striatum ($P<0.001$), thalamus ($P<0.05$), hypothalamus ($P<0.001$) and raphe nuclei ($P<0.01$), compared to PD without sleep dysfunction. Higher severity of sleep symptoms (assessed with Parkinson Disease Sleep Scale) correlated with lower [^{11}C]DASB binding in caudate ($r=0.77$; $P<0.001$), putamen ($r=0.84$; $P<0.001$), ventral striatum ($r=0.86$; $P<0.001$), thalamus ($r=0.79$; $P<0.001$), hypothalamus ($r=0.90$; $P<0.001$) and raphe nuclei ($r=0.83$; $P<0.001$).

Conclusions: Our findings demonstrate that sleep dysfunction in PD is associated with reduced serotonergic function in the midbrain raphe, basal ganglia and hypothalamus.

Strategies to increase serotonin levels in the brain could be a promising approach to treat sleep dysfunction in PD, and may also have relevance in other neurodegenerative disorders.

Keywords: Parkinson's disease; Sleep disturbances; Serotonin; DASB; PET

Abbreviations: 5-HT = Hydroxytryptophan (serotonin); BP_{ND} = Non-Displaceable Binding Potential; DASB = [N,N-dimethyl-2-(2-amino-4-cyanophenylthio) benzylamine]; EDS = Excessive Daytime Somnolence; ROI = Region Of Interest; RBD = Rapid Eye Movement Behaviours Disorders; SERT = Serotonin Transporter

1. Introduction

Parkinson's disease (PD) is a progressive neurodegenerative disorder characterised by the cardinal motor symptoms of bradykinesia, rigidity and tremor, and a range of frequent non-motor symptoms such as sleep disturbances, depression and chronic fatigue. Sleep disturbances are estimated to affect between 15-96% of patients with PD, constituting a significant source of complaint and affecting quality of life^{1,2}. Sleep disturbances in PD are typically divided to insomnia, parasomnias including rapid eye movement (REM) behaviours disorders (RBD), excessive daytime sleepiness (EDS) and drug induced sleep dysfunctions³.

Neurochemical systems including acetylcholine, noradrenaline, dopamine, histamine, orexin/hypocretin and serotonin interact to regulate the sleep-wake cycle⁴. Mechanisms underlying the pathophysiology, and high prevalence, of sleep dysfunction in PD remain poorly understood. The occurrence of sleep dysfunction predating motor symptoms in PD raises the possibility that Lewy body pathology could play a role. Pre-clinical Parkinson's stages reflect the spread of Lewy body pathology to the raphe nucleus⁵, the primary source of serotonin (5-HT) neurotransmitter. Serotonergic projections innervate brain regions

involved in the regulation of sleep, wakefulness and arousal including the forebrain, hypothalamus, thalamus, basal ganglia and preoptic area ⁶.

Post-mortem studies revealed up to 50% loss of serotonergic neurons in the brains of patients with PD ⁷. Biochemical studies confirmed these findings demonstrating decreased levels of serotonin transporter (SERT) protein in striatal and extra-striatal areas ^{8,9}. Positron emission tomography (PET) molecular imaging studies measuring SERT availability have revealed reductions of striatal and extra-striatal 5-HT including raphe nuclei, thalamus and hypothalamus ¹⁰⁻¹². Furthermore, PET studies have linked serotonergic dysfunction with the development of dyskinesias ¹³, tremor ¹⁴, depression ¹⁵, apathy and anxiety ¹⁶, fatigue ¹⁷, weight loss ¹⁸ and visual hallucinations ¹⁹ in PD. Therefore, there is compelling evidence from preclinical, post-mortem and human imaging studies for the role of serotonergic dysfunction in PD.

The serotonergic system plays a critical role in the sleep-wake cycle and its dysfunction could have relevance to the development of sleep disturbances in PD. Animal studies have demonstrated that lesions in the raphe nucleus result in reduced sleep which is associated with lower levels of serotonin ²⁰. Changes in raphe nuclei following sleep deprivation included increases in neuronal size, increased firing during wake and downregulation of 5-HT receptors ²¹. Preclinical PET studies with [¹¹C]DASB demonstrated decreases in SERT binding in rats deprived of sleep ²¹. Furthermore, PET studies in patients with PD have revealed reductions in SERT availability in key brain regions involved in the regulation of sleep and wakefulness ¹².

In this study, we hypothesized that PD patients with sleep dysfunction, as clinically identified using the original version of Parkinson Disease Sleep Scale (PDSS) ²², would show reduced serotonergic function in brain areas modulating sleep and arousal. The PDSS is widely

validated and recommended by the MDS task force for clinical assessment of a range of sleep disorders and severity in PD²³. We sought to investigate this *in vivo* using [¹¹C]DASB PET molecular imaging, as a marker of SERT availability.

2. Material and methods

2.1 Participants

Patient selection was carried out from a cohort of 56 patients with a clinical diagnosis of idiopathic PD (Figure 1), according to the UK Brain Bank criteria, recruited from specialist Movement Disorders clinics at King's College Hospital. Based on study selection criteria, Parkinson's patients with dementia [Mini-Mental State Examination (MMSE) <24], depression [Hamilton Rating Scale for Depression (HRSD) >13 and Beck Depression Inventory-II (BDI-II) >17], fatigue [Non-Motor Symptom Scale (NMSS) fatigue sub-item], and abnormal weight gain or loss [Body Mass Index (BMI) change >1 unit in the last 12 months] were excluded from the study. Twelve age-matched healthy individuals, with no history of neurological or psychiatric disorders and no family history of PD, served as the control group (Table 1).

Twenty-eight Parkinson's patients, who met the selection criteria, were divided into two groups according to the presence (n=14) or absence (n=14) of sleep dysfunction (Figure 1; Table 1). We screened for sleep dysfunction based on a three-layer approach: (a) Complaint by the patient or carer; (b) Unified PD Rating Scale (UPDRS) Part-I, Item 1.7 (Sleep dysfunction): >2 Mild, Moderate or Severe Sleep dysfunction as opposed to '0' no sleep dysfunction. Patients who scored '1' slight sleep dysfunction were excluded; and (c) by using the PDSS with a validated cut-off of <82 to define sleep dysfunction in patients with Parkinson Disease²⁴. The PDSS, cut-off of scores <82, was used for the final classification of the presence of sleep dysfunction.

PDSS was also used to quantify severity of sleep dysfunction, and for interrogating correlations with the PET data. The PDSS is a validated 15-item scale measuring commonly reported symptoms associated with sleep dysfunction²². Each item is rated from worst (0) to best state (10); the total score is calculated as the sum of the item scores with a maximum score of 150. Lower PDSS scores imply higher burden of sleep symptoms. The PD groups were matched for age, disease duration, severity of motor symptoms [Unified Parkinson's Disease Rating Scale part-III (UPDRS-III) and Hoehn & Yahr (H&Y) scale], daily intake of levodopa equivalent units, body-mass-index, and depression (BDI-II and HRSD) and fatigue levels (NMSS) (Table 1). None of the subjects had dyskinesias or were receiving medication with known action on the serotonergic system, or medication that affects the sleep-wake cycle including trazodone, melatonin, or stimulants.

All participants screened successfully to undertake PET and magnetic resonance imaging (MRI) scanning under standard criteria (<http://www.mrisafety.com>; <https://www.gov.uk/government/publications/arsac-notes-for-guidance>). Written informed consent was obtained from all study participants in accordance with the Declaration of Helsinki. The study was approved by the institutional review boards and the research ethics committee. Permission to administer [¹¹C]DASB was obtained from the Administration of Radioactive Substances Advisory Committee, UK.

2.2 Scanning procedures

Participants were scanned using a GE Discovery RX PET/CT scanner. The mean injected dose for [¹¹C]DASB was 400MBq and scanning began 30s before tracer infusion as an intravenous bolus, generating 28 time frames of tissue data over 90 min. Subjects were positioned supine with their transaxial planes parallel to the line intersecting the anterior-posterior commissure line. Head position was maintained with the help of individualized

foam holders and monitored by video. Subjects were scanned at rest in a quiet room with low light. Smoking and consumption of alcohol, coffee and other caffeinated beverages were not allowed for 12 hours before scanning. Eating and drinking were not allowed for 8 hours before PET scanning. All PD patients were scanned OFF medication and following an overnight withdraw of their normal medications.

MRI was performed using a clinical 1.5-Tesla MRI system (Siemens MAGNETOM Avanto) for the purposes of PET image co-registration and to facilitate localising the regions of interest (ROIs). The MRI protocol included volumetric T1 sequences (coronal and axial T1-spin echo: TR=635ms, TE=17ms, 5mm slice thickness; T1 volumetric MPRAGE (TR=1900ms, TE=3.53ms, TI=1100ms, Flip angle 15, 1mm isotropic voxels), and T2-weighted sequences (Axial T2-spin echo: TR=4540ms, TE=97ms, 5mm slice thickness; Axial FLAIR: TR=9000ms, TE=114ms, TI=2500ms, 5mm slice thickness).

2.3 [^{11}C]DASB PET analysis

Individual PET frames were corrected for head motion using frame-by-frame realignment using a frame with high signal-to-noise ratio as reference. Summed dynamic [^{11}C]DASB images were created from the entire series of uptake image volumes. Parametric images of [^{11}C]DASB distribution volume ratios (DVR) were generated using the Logan reference model with reference region for non-specific tracer-binding signal in the posterior cerebellar grey matter cortex avoiding inclusion of the vermis ²⁵. Regional concentrations of radioactivity (kBq/ml) were obtained from the full dynamic scan and decay-corrected time-activity curves (TACs) were computed. PET images were anatomically co-registered and resliced to the corresponding T1-weighted MRI using the mutual information registration algorithm in the statistical parametric mapping (SPM) software package (Version 12).

Manual delineation of ROIs was performed on co-registered MRI and PET using ANALYZE medical imaging software (version 12, Mayo Foundation). ROIs were manually defined on both hemispheres for the caudate, putamen, ventral striatum, amygdala, thalamus, hypothalamus, globus pallidus, raphe nucleus, anterior cingulate cortex, posterior cingulate cortex, prefrontal cortex and insula. The binding potential of the specially bound radioligand relative to the non-displaceable radioligand (BP_{ND}) in the tissue was calculated as $DVR-1$ ²⁶. Since changes in BP_{ND} could be associated with degeneration or volumetric loss, we confirmed there were no differences in grey matter volumes on individual subjects MRIs between groups of PD patients with and without sleep disturbances and healthy controls; therefore, partial volume correction was not applied.

2.4 Statistical analysis

Statistical analysis and graph illustration were performed with SPSS (version 20 Chicago, Illinois, USA) and GraphPad Prism (version 6.0) respectively. For all variables, variance homogeneity and Gaussianity were tested with Barrlett and Kolmogorov-Smirnov tests, and we proceeded with parametric tests as our PET and clinical data were normally distributed. Regional [¹¹C]DASB BP_{ND} among healthy controls, patients with PD with and without sleep dysfunction were compared using one-way ANOVA followed by Brown-Forsythe and Barrlett's test. P values for each variable were calculated following Bonferroni multiple-comparisons test. When ANOVA P values were significant, univariate comparisons and p values were calculated with Bonferroni post-hoc tests. Effect size was measured with Cohen's d. We interrogated correlations between PET and clinical data using Pearson's r correlation coefficient and we applied the Benjamini-Hochberg multiple-comparisons test to reduce false discovery rate; we set the false discovery rate cut-off at 0.05. All data are presented as mean \pm standard deviation (SD). The α level was set at $P < 0.05$, corrected for multiple comparisons.

3. Results

Clinical measures between the two groups of patients with PD revealed no significant differences in age ($P>0.10$; $r=0.12$), MMSE scores ($P>0.10$; $r=0.48$), UPDRS-III scores ($P>0.10$; $r=-0.20$), daily intake of levodopa equivalent units ($P>0.10$; $r=0.005$), body-mass-index scores ($P>0.10$; $r=0.069$), HRSD scores ($P>0.10$; $r=-0.12$) and BDI-II scores ($P>0.10$; $r=-0.18$) (Table 1).

3.1 Regional [^{11}C]DASB binding

Mean [^{11}C]DASB BP_{ND} values in ROIs were decreased by 14-25% in PD patients without sleep dysfunction and by 32-49% in Parkinson's patients with sleep dysfunction, compared to healthy controls (Table 2). Parkinson's patients with sleep dysfunction had decreased [^{11}C]DASB BP_{ND} values, after correction for multiple comparisons, in the caudate ($P=0.004$; effect size $d=1.33$), putamen ($P<0.001$; effect size $d=2.32$), ventral striatum ($P<0.001$; effect size $d=1.99$), thalamus ($P=0.017$; effect size $d=1.22$), hypothalamus ($P<0.001$; effect size $d=2.34$) and raphe nuclei ($P=0.009$; effect size $d=1.27$) compared to Parkinson's patients without sleep dysfunction (Table 2, Figures 2 and 3). While decreased [^{11}C]DASB BP_{ND} was observed in the anterior and posterior cingulate and the insula between patients with PD and healthy controls, there were no differences in [^{11}C]DASB BP_{ND} between Parkinson's patients with and without sleep dysfunction in these areas. The prefrontal cortex, globus pallidus and amygdala showed no difference between group means as determined by ANOVA analysis (Table 2; Figure 2). There were no volumetric differences in any regions of interest between the groups of patients with PD and healthy controls ($P>0.10$) (Supplemental Data: Table e-1).

3.2 Correlations

Lower individual PDSS scores, implying higher burden of sleep symptoms, correlated with lower [^{11}C]DASB BP_{ND} values in the caudate ($P<0.001$; $r=0.77$), putamen ($P<0.001$; $r=0.84$), ventral striatum ($P<0.001$; $r=0.86$), thalamus ($P<0.001$; $r=0.79$), hypothalamus ($P<0.001$; $r=0.90$) and raphe nuclei ($P<0.001$; $r=0.83$) in all 28 patients with PD (Figure 4).

4. Discussion

Our findings demonstrate that sleep dysfunction in PD is associated with reduced serotonergic function in the midbrain raphe, basal ganglia and hypothalamus. Using a [^{11}C]DASB PET region of interest analytical approach, we found that SERT binding was decreased in the dorsal (caudate and putamen) and ventral striatum, thalamus, hypothalamus and raphe nuclei of Parkinson's patients with sleep dysfunction compared to patients without sleep dysfunction. Furthermore, higher burden of sleep symptoms correlated with reduced SERT binding in the caudate, putamen, ventral striatum, thalamus, hypothalamus and raphe nuclei. These are key brain regions involved in the mechanisms regulating sleep, supporting the role of serotonergic dysfunction in the pathophysiology of sleep disorders in PD.

Our results translate, into humans, preclinical findings highlighting the role of serotonergic dysfunction in the development of sleep disturbances. Neuronal activity in the basal ganglia is modulated by serotonin and dopamine during wakefulness and REM sleep²⁷. Preclinical studies showed that lesions within the basal ganglia led to alterations in the regulation of the sleep-wake cycle^{28, 29}. The dorsal striatum (caudate and putamen) enhances wakefulness, while the nucleus accumbens promotes sleep, and selective lesions in the external globus pallidus increase total wakefulness²⁹. Furthermore, 5-HT receptors in the caudate, putamen and nucleus accumbens are thought to play a role in circadian rhythms²⁷. In the thalamus, 5-HT₂ receptors are postulated to modulate both the excitation of the reticular nucleus leading to single-spike activity and waking, and the oscillatory activity of the reticular nucleus;

implicating the thalamus in mechanisms for the arousing effects of serotonin³⁰. In animal studies, lesions in the raphe nucleus resulted in decreased sleep which was associated with lower levels of serotonin²⁰. Thus, findings of decreased SERT binding in the raphe, striatum and thalamus in PD patients with sleep dysfunction supports their role in mechanisms modulating the sleep-wake cycle. Due to the selectively, and differential expression, of 5-HT receptor subtypes throughout the brain; serotonergic stimulation yields complex effects on the sleep-switch, exerting both sleep incompatible and sleep promoting effects³¹⁻³³. Therefore, alterations in the serotonergic system can lead to changes in sleep architecture and quality of sleep. Use of novel PET tracers to image and quantify the different 5-HT receptors subtypes in Parkinson's patients with sleep dysfunction would help to further elucidate underlying mechanisms.

Here, we report highest reductions in SERT binding in the hypothalamus in Parkinson's patients with sleep dysfunction. The hypothalamus plays a central role in the regulation of sleep and circadian rhythms, and receives serotonergic projections from the raphe nucleus⁴. The posterior tuberomammillary nuclei and lateral hypothalamus also modulate the sleep-switch, acting predominantly to promote wakefulness³⁴. Involvement of the hypothalamus and raphe nucleus in PD sleep dysfunction is consistent with involvement of Lewy body and neurite depositions which occurs early in the disease⁵. Lewy body pathology has been reported in hypothalamic orexin neurons (hypocretin area)^{35, 36}. Therefore, Lewy body pathology in the hypothalamus could result in loss of orexin neurons, which also interacts with dopaminergic networks of the hypothalamus and is thought to function as an external regulator of the flip-flop switch promoting wakefulness³⁷. Post-mortem studies have revealed loss of hypocretin neurons in PD brains and reduced levels of orexin in the cerebrospinal fluid (CSF), associated with sleep disorders, in patients with PD; implicating orexin neuronal loss and impaired orexin neurotransmission in PD pathophysiology^{35, 38}. Further studies are

required to fully understand regional loss of serotonin, as well as interaction with other regulators of sleep, in mechanisms underlying specific sleep disturbances in PD.

Recently, non-motor endophenotypes of PD including the Park sleep phenotype have been described³⁹. Sleep disorders in PD are heterogeneous and complex, likely involving multiple neurotransmitter systems; thus, differentiating underlying pathophysiology of specific sleep phenotypes is challenging. A PET study with [¹¹C]DASB found no association between severity of sleep disordered breathing and SERT binding⁴⁰. Loss of striatal [¹²³I]FP-CIT has been associated with severity of EDS, suggesting daytime sleepiness is associated with dopaminergic nigrostriatal degeneration⁴¹. A [¹¹C]DASB PET study showed no differences in raphe nucleus and striatal SERT binding in patients with and without RBD symptoms⁴². In RBD, degeneration of cholinergic neurons in the basal forebrain and brainstem, and loss of noradrenergic neurons in the locus coeruleus played a more prominent role than serotonergic dysfunction⁴². Furthermore, a [¹²³I]FP-CIT single-photon emission computed tomography (SPECT), study in idiopathic RBD patients showed no difference in brainstem and thalamic binding, but significant reductions in the basal ganglia; leading the authors to conclude that the serotonergic system is not directly involved in RBD pathogenesis⁴³. We provide evidence to suggest that serotonergic dysfunction is associated with sleep fragmentation, including sleep maintenance, nocturnal motor symptoms, nocturnal hallucinations and nocturia, as measured with the PDSS²². Difficulty in maintaining sleep is often accompanied by a decrease in total sleep time and an increase in the number of awakenings during sleep and wakefulness after sleep onset. Serotonergic dysfunction has previously been implicated to play a role in motor symptoms in PD^{13, 14}, therefore could contribute to development of nocturnal motor symptoms. Taken our results together with previous studies, it's plausible that the development of nocturnal sleep disturbances is influenced by serotonergic dysfunction, whereas cholinergic, noradrenergic and dopaminergic pathology may underlie

the pathophysiology of RBD and EDS. However, future larger studies assessing correlations between serotonergic function and subsets of the PDSS, in combination with other neurotransmitter systems, are required to highlight which specific aspect of sleep-wake disturbances are associated with serotonergic dysfunction.

To reduce the effects of possible confounding factors known to affect SERT binding, the two groups of patients with PD were carefully matched for age, disease duration, motor and non-motor symptom burden, and levodopa treatment intake. Furthermore, patients with fatigue, dementia, depression and abnormal weight gain or loss were excluded to reduce effects of known confounding factors of [^{11}C]DASB binding and sleep. However, co-morbid non-motor and cognitive factors could predispose, exacerbate or follow sleep dysfunction in PD; these factors should be considered when interpreting the results. In order to investigate the role of serotonin dysregulating contributing to the pathophysiology of sleep disturbances in PD, and to limit the effects of possible confounding factors, the PD cohort studied was relatively homogenous. Therefore, larger studies in a more heterogeneous population of patients with PD are required to further understand the wider clinical application of these findings. Here, we defined the presence of sleep disturbances using the validated Parkinson's disease sleep scale. Further studies using specific sleep scales, and sleep electroencephalogram (EEG), are required to further investigate the role of serotonergic dysfunction in the development of specific types of sleep disturbances in patients with PD.

Sleep disturbances are highly prevalent among other neurodegenerative diseases including Alzheimer's disease and Lewy body dementia and Huntington's disease. Recent studies have highlighted the role of the glymphatic system in the removal of potentially neurotoxic protein waste, which accumulates during wakefulness, from the brain at a highest rate during sleep⁴⁴. Dysregulation of the glymphatic system, potentially due to sleep dysfunction, could result in abnormal accumulation of protein aggregates such as alpha-synuclein and beta-amyloid⁴⁵.

Therefore, sleep dysfunction may not only be a side effect, but could contribute to a protein deposition and neurodegeneration. Alterations in the neurotransmitter systems could play a role in driving sleep dysfunction, subsequently contributing to dysregulation of the glymphatic system and the abnormal accumulation of protein aggregates underlying disease pathology. Studies investigating the involvement of the serotonergic system across neurodegenerative disorders could highlight if similar mechanisms underlie pathophysiology of sleep disturbances. Therapeutic strategies targeting serotonergic function may provide novel interventions to alleviate sleep disturbances with possible implications for disease pathology.

Acknowledgements: We thank all the participants who kindly agreed to take part in this study.

Author Contributions: M. P. conceptualized the experimental design and organized the study. M.P., F.T. acquisition of the data. H.W., B.G., have analyzed the data. H.W. conducted the statistical analysis, interpretation of data and wrote the first draft of the manuscript. F.T. and K.C. interpretation of data and critical revision of the manuscript for important intellectual content. M.P. acquired funding for the study. All authors gave input and revised the manuscript.

Financial Disclosures: This research was supported by the Lily and Edmond J. Safra Foundation (PNNWPGD). H. Wilson., B. Giordano., F.E. Turkheimer., K. Ray Chaudhuri., and M. Politis report no disclosures.

Figure Legends

Figure 1 Summary flow-chart depicting the inclusion criteria and selection process of Parkinson's patients with and without sleep dysfunction. PD = Parkinson's disease; PDSS = Parkinson's disease Sleep Scale; UPDRS-III = Unified Parkinson's Disease Rating Scale part-III; H&Y = Hoehn & Yahr; BDI-II = Beck Depression Inventory-II; HRSD = Hamilton Rating Scale for Depression; MMSE = Mini Mental State Examination.

Figure 2 Regional [^{11}C]DASB BP_{ND} decreases in groups of Parkinson's patients with and without sleep dysfunction. Column bar graphs showing mean [^{11}C]DASB non-displaceable binding potential (BP_{ND}) in brain regions between Parkinson's patients with and without sleep disturbances and healthy controls. Error bars represent mean \pm SD. * $P < 0.05$; ** $P < 0.001$; *** $P < 0.001$. All P values are Bonferroni corrected for multiple comparisons.

Figure 3 Loss of [^{11}C]DASB BP_{ND} in Parkinson's patients with sleep dysfunction compared to patients without sleep dysfunction and healthy controls. [^{11}C]DASB PET images co-registered and fused with 1.5-Tesla MRI images showing basal ganglia and brain stem regions in healthy controls (64 year old female; PDSS=143; putamen BP_{ND} =1.532; caudate BP_{ND} =1.320; thalamus BP_{ND} =1.755; raphe BP_{ND} = 2.693), Parkinson's patients without sleep dysfunction (62 year old male with disease duration of 4 years; PDSS=95; UPDRS-III score OFF medication of 17; putamen BP_{ND} =0.998; caudate BP_{ND} =0.732; thalamus BP_{ND} =1.282; raphe BP_{ND} =1.595) and Parkinson's patients with sleep dysfunction (79 year old male with disease duration of 9 years; PDSS=51; UPDRS-III score OFF medication of 56; putamen BP_{ND} =0.828; caudate BP_{ND} =0.664; thalamus BP_{ND} =0.802; raphe BP_{ND} =1.457). Colour bar reflects range of [^{11}C]DASB BP_{ND} intensity.

Figure 4 Correlations between loss of [^{11}C]DASB BP_{ND} and impaired sleep scores in patients with Parkinson's disease. Lower scores on the PDSS correlated with lower [^{11}C]DASB BP_{ND} in the caudate ($P < 0.001$; $r = 0.77$), putamen ($P < 0.001$; $r = 0.84$), ventral striatum ($P < 0.001$;

$r=0.86$), thalamus ($P<0.001$; $r=0.79$), hypothalamus ($P<0.001$; $r=0.90$) and raphe nuclei ($P<0.001$; $r=0.83$). BP_{ND} = Non-displaceable Binding Potential; PDSS = Parkinson's disease Sleep Scale.

Tables

Table 1 Clinical characteristics of patients with Parkinson's disease and healthy controls

	Healthy controls	PD without sleep dysfunction	PD with sleep dysfunction
Number of subjects	12	14	14
Age (years \pm SD)	63.4 (\pm 7.1)	67.4 (\pm 4.2)	65.9 (\pm 8.8)
BMI (mean \pm SD)	25.9 (\pm 3.5)	25.5 (\pm 3.6)	24.9 (\pm 4.2)
MMSE (mean \pm SD)	29.4 (\pm 0.7)	29.7 (\pm 0.6)	28.9 (\pm 1.9)
BDI-II (mean \pm SD)	3.1 (\pm 2.6)	7.4 (\pm 3.5)	8.4 (\pm 3.1)
HRSD (mean \pm SD)	2.6 (\pm 2.7)	6.2 (\pm 2.6)	7.1 (\pm 2.3)
NMSS (Fatigue)	No	No	No
Disease duration (years \pm SD)	-	8.1 (\pm 3.6)	8.7 (\pm 3.1)
H&Y OFF (mean \pm SD)	-	2.4 (\pm 1.0)	3.1 (\pm 0.6)
UPDRS-III OFF (mean \pm SD)	-	38.6 (\pm 11.7)	44.1 (\pm 9.7)
Daily LED (mean \pm SD)	-	792.1 (\pm 760.5)	835.4 (\pm 315.4)
PDSS (mean \pm SD)	114.0 (\pm 3.8)	114.7 (\pm 18.8)	58.2 (\pm 17.2)***

Lower PDSS represents worse score (best = 150/ worst = 0). PD = Parkinson's disease;

PDSS = Parkinson's disease Sleep Scale; UPDRS-III = Unified Parkinson's Disease Rating

Scale part-III; H&Y = Hoehn & Yahr; BDI-II = Beck Depression Inventory-II; HRSD =

Hamilton Rating Scale for Depression; NMSS = Non-Motor Symptom Scale; MMSE = Mini

Mental State Examination. *** $P<0.001$.

Table 2 [^{11}C]DASB binding potential values in groups of Parkinson's disease patients with and without sleep dysfunction and healthy controls

ROI	Healthy controls (mean \pm SD)	PD control (mean \pm SD)	PD sleep dysfunction (mean \pm SD)	HC vs PD control (% change; <i>P</i> value)	HC vs PD sleep dysfunction (% change; <i>P</i> value)	PD control vs PD sleep dysfunction (% change; <i>P</i> value)
Caudate	1.364 (\pm 0.13)	0.994 (\pm 0.16)	0.816 (\pm 0.1)	-27.1% <i>P</i> <0.001	-40.1% <i>P</i> <0.001	-17.8% <i>P</i> =0.004
Putamen	1.360 (\pm 0.11)	1.131 (\pm 0.10)	0.899 (\pm 0.1)	-16.9% <i>P</i> <0.001	-33.9% <i>P</i> <0.001	-20.5% <i>P</i> <0.001
Ventral Striatum	1.404 (\pm 0.14)	1.208 (\pm 0.15)	0.909 (\pm 0.18)	-14.0% <i>P</i> =0.011	-35.5% <i>P</i> <0.001	-24.8% <i>P</i> <0.001
Thalamus	1.469 (\pm 0.19)	1.109 (\pm 0.15)	0.926 (\pm 0.15)	-24.6% <i>P</i> <0.001	-37.0% <i>P</i> <0.001	-16.5% <i>P</i> =0.017
Hypothalamus	1.240 (\pm 0.21)	0.996 (\pm 0.11)	0.632 (\pm 0.19)	-19.7% <i>P</i> =0.003	-49.1% <i>P</i> <0.001	-36.6% <i>P</i> <0.001
Raphe	2.212 (\pm 0.29)	1.815 (\pm 0.25)	1.497 (\pm 0.25)	-17.9% <i>P</i> =0.002	-32.3% <i>P</i> <0.001	-17.5% <i>P</i> =0.009
Insula	0.378 (\pm 0.07)	0.215 (\pm 0.10)	0.200 (\pm 0.10)	-43.0% <i>P</i> <0.001	-47.0% <i>P</i> <0.001	-7.1% <i>P</i> >1.0
Anterior Cingulate	0.383 (\pm 0.11)	0.247 (\pm 0.10)	0.256 (\pm 0.09)	-35.3% <i>P</i> =0.005	-33.2% <i>P</i> =0.008	3.3% <i>P</i> >1.0
Posterior Cingulate	0.371 (\pm 0.09)	0.244 (\pm 0.07)	0.259 (\pm 0.07)	-34.3% <i>P</i> <0.001	-30.0% <i>P</i> =0.002	6.5% <i>P</i> >1.0
Globus Pallidus	0.776 (\pm 0.17)	0.611 (\pm 0.14)	0.598 (\pm 0.12)	NS*	NS*	NS*
Amygdala	1.139 (\pm 0.21)	0.776 (\pm 0.22)	0.898 (\pm 0.25)	NS*	NS*	NS*
Prefrontal Cortex	0.205 (\pm 0.03)	0.163 (\pm 0.06)	0.146 (\pm 0.08)	NS*	NS*	NS*

P values are Bonferroni corrected for multiple-comparisons. NS* = Not Significant ANOVA.

PD = Parkinson's disease. PD control = Parkinson's disease patients without sleep dysfunction; PD sleep = Parkinson's disease patients with sleep dysfunction.

References

1. Selvaraj VK, Keshavamurthy B. Sleep Dysfunction in Parkinson's Disease. *J Clin Diagn Res* 2016;10:OC09-12.
2. Menza M, Dobkin RD, Marin H, Bienfait K. Sleep disturbances in Parkinson's disease. *Movement disorders : official journal of the Movement Disorder Society* 2010;25 Suppl 1:S117-122.
3. Jahan I, Hauser RA, Sullivan KL, Miller A, Zesiewicz TA. Sleep disorders in Parkinson's disease. *Neuropsychiatr Dis Treat* 2009;5:535-540.
4. Saper CB, Scammell TE, Lu J. Hypothalamic regulation of sleep and circadian rhythms. *Nature* 2005;437:1257-1263.
5. Braak H, Del Tredici K, Rub U, de Vos RA, Jansen Steur EN, Braak E. Staging of brain pathology related to sporadic Parkinson's disease. *Neurobiology of aging* 2003;24:197-211.
6. Wallman MJ, Gagnon D, Parent M. Serotonin innervation of human basal ganglia. *The European journal of neuroscience* 2011;33:1519-1532.
7. Halliday GM, Blumbergs PC, Cotton RG, Blessing WW, Geffen LB. Loss of brainstem serotonin- and substance P-containing neurons in Parkinson's disease. *Brain Res* 1990;510:104-107.
8. Kish SJ. Biochemistry of Parkinson's disease: is a brain serotonergic deficiency a characteristic of idiopathic Parkinson's disease? *Advances in neurology* 2003;91:39-49.
9. Kish SJ, Tong J, Hornykiewicz O, et al. Preferential loss of serotonin markers in caudate versus putamen in Parkinson's disease. *Brain : a journal of neurology* 2008;131:120-131.
10. Albin RL, Koeppe RA, Bohnen NI, Wernette K, Kilbourn MA, Frey KA. Spared caudal brainstem SERT binding in early Parkinson's disease. *J Cereb Blood Flow Metab* 2008;28:441-444.

11. Guttman M, Boileau I, Warsh J, et al. Brain serotonin transporter binding in non-depressed patients with Parkinson's disease. *European journal of neurology* 2007;14:523-528.
12. Politis M, Wu K, Loane C, et al. Staging of serotonergic dysfunction in Parkinson's disease: an in vivo 11C-DASB PET study. *Neurobiology of disease* 2010;40:216-221.
13. Politis M, Wu K, Loane C, et al. Serotonergic mechanisms responsible for levodopa-induced dyskinesias in Parkinson's disease patients. *The Journal of clinical investigation* 2014;124:1340-1349.
14. Loane C, Wu K, Bain P, Brooks DJ, Piccini P, Politis M. Serotonergic loss in motor circuitries correlates with severity of action-postural tremor in PD. *Neurology* 2013;80:1850-1855.
15. Politis M, Wu K, Loane C, et al. Depressive symptoms in PD correlate with higher 5-HTT binding in raphe and limbic structures. *Neurology* 2010;75:1920-1927.
16. Maillet A, Krack P, Lhommee E, et al. The prominent role of serotonergic degeneration in apathy, anxiety and depression in de novo Parkinson's disease. *Brain : a journal of neurology* 2016;139:2486-2502.
17. Pavese N, Metta V, Bose SK, Chaudhuri KR, Brooks DJ. Fatigue in Parkinson's disease is linked to striatal and limbic serotonergic dysfunction. *Brain : a journal of neurology* 2010;133:3434-3443.
18. Politis M, Loane C, Wu K, Brooks DJ, Piccini P. Serotonergic mediated body mass index changes in Parkinson's disease. *Neurobiology of disease* 2011;43:609-615.
19. Ballanger B, Strafella AP, van Eimeren T, et al. Serotonin 2A receptors and visual hallucinations in Parkinson disease. *Archives of neurology* 2010;67:416-421.
20. Jouvet M. The role of monoamines and acetylcholine-containing neurons in the regulation of the sleep-waking cycle. *Ergebnisse der Physiologie, biologischen Chemie und experimentellen Pharmakologie* 1972;64:166-307.

21. Hipolide DC, Moreira KM, Barlow KB, Wilson AA, Nobrega JN, Tufik S. Distinct effects of sleep deprivation on binding to norepinephrine and serotonin transporters in rat brain. *Progress in neuro-psychopharmacology & biological psychiatry* 2005;29:297-303.
22. Chaudhuri KR, Pal S, DiMarco A, et al. The Parkinson's disease sleep scale: a new instrument for assessing sleep and nocturnal disability in Parkinson's disease. *J Neurol Neurosurg Psychiatry* 2002;73:629-635.
23. Hogl B, Arnulf I, Comella C, et al. Scales to assess sleep impairment in Parkinson's disease: critique and recommendations. *Movement disorders : official journal of the Movement Disorder Society* 2010;25:2704-2716.
24. Martinez-Martin P, Visser M, Rodriguez-Blazquez C, Marinus J, Chaudhuri KR, van Hilten JJ. SCOPA-sleep and PDSS: two scales for assessment of sleep disorder in Parkinson's disease. *Movement disorders : official journal of the Movement Disorder Society* 2008;23:1681-1688.
25. Kish SJ, Furukawa Y, Chang LJ, et al. Regional distribution of serotonin transporter protein in postmortem human brain: is the cerebellum a SERT-free brain region? *Nucl Med Biol* 2005;32:123-128.
26. Ginovart N, Wilson AA, Meyer JH, Hussey D, Houle S. Positron emission tomography quantification of [(11)C]-DASB binding to the human serotonin transporter: modeling strategies. *J Cereb Blood Flow Metab* 2001;21:1342-1353.
27. Monti JM. Serotonin control of sleep-wake behavior. *Sleep Med Rev* 2011;15:269-281.
28. Lazarus M, Chen J-F, Urade Y, Huang Z-L. Role of the basal ganglia in the control of sleep and wakefulness. *Current opinion in neurobiology* 2013;23:780-785.
29. Qiu M-H, Vetrivelan R, Fuller PM, Lu J. Basal ganglia control of sleep-wake behavior and cortical activation. *European Journal of Neuroscience* 2010;31:499-507.

30. Ursin R. Serotonin and sleep. *Sleep Med Rev* 2002;6:55-69.
31. Portas CM, Bjorvatn B, Ursin R. Serotonin and the sleep/wake cycle: special emphasis on microdialysis studies. *Prog Neurobiol* 2000;60:13-35.
32. Leonard CS, Llinas R. Serotonergic and cholinergic inhibition of mesopontine cholinergic neurons controlling REM sleep: an in vitro electrophysiological study. *Neuroscience* 1994;59:309-330.
33. Strecker RE, Thakkar MM, Porkka-Heiskanen T, Dauphin LJ, Bjorkum AA, McCarley RW. Behavioral state-related changes of extracellular serotonin concentration in the pedunculopontine tegmental nucleus: a microdialysis study in freely moving animals. *Sleep Res Online* 1999;2:21-27.
34. Espana RA, Scammell TE. Sleep neurobiology from a clinical perspective. *Sleep* 2011;34:845-858.
35. Fronczek R, Overeem S, Lee SY, et al. Hypocretin (orexin) loss in Parkinson's disease. *Brain : a journal of neurology* 2007;130:1577-1585.
36. Lessig S, Ubhi K, Galasko D, et al. Reduced hypocretin (orexin) levels in dementia with Lewy bodies. *Neuroreport* 2010;21:756-760.
37. Nishino S, Ripley B, Overeem S, Lammers GJ, Mignot E. Hypocretin (orexin) deficiency in human narcolepsy. *Lancet (London, England)* 2000;355:39-40.
38. Asai H, Hirano M, Furiya Y, et al. Cerebrospinal fluid-orexin levels and sleep attacks in four patients with Parkinson's disease. *Clin Neurol Neurosurg* 2009;111:341-344.
39. Sauerbier A, Jenner P, Todorova A, Chaudhuri KR. Non motor subtypes and Parkinson's disease. *Parkinsonism Relat Disord* 2016;22 Suppl 1:S41-46.
40. Lelieveld IM, Muller ML, Bohnen NI, et al. The role of serotonin in sleep disordered breathing associated with Parkinson disease: a correlative [¹¹C]DASB PET imaging study. *PLoS One* 2012;7:e40166.

41. Happe S, Baier PC, Helmschmied K, Meller J, Tatsch K, Paulus W. Association of daytime sleepiness with nigrostriatal dopaminergic degeneration in early Parkinson's disease. *J Neurol* 2007;254:1037-1043.
42. Kotagal V, Albin RL, Muller ML, et al. Symptoms of rapid eye movement sleep behavior disorder are associated with cholinergic denervation in Parkinson disease. *Ann Neurol* 2012;71:560-568.
43. Arnaldi D, Fama F, De Carli F, et al. The Role of the Serotonergic System in REM Sleep Behavior Disorder. *Sleep* 2015;38:1505-1509.
44. Xie L, Kang H, Xu Q, et al. Sleep Drives Metabolite Clearance from the Adult Brain. *Science (New York, NY)* 2013;342:10.1126/science.1241224.
45. Nedergaard M, Goldman S, A. Brain Drain. *Scientific American* 2016;314:44-49.

Highlights

- Reduced PET [¹¹C]DASB binding in Parkinson patients with sleep disturbances
- PD with sleep disturbances show loss of serotonin in the striatum, raphe and hypothalamus
- Loss of serotonin correlated with severity of sleep symptoms in PD patients
- Serotonergic dysfunction could contribute to pathophysiology of sleep disturbances

ACCEPTED MANUSCRIPT

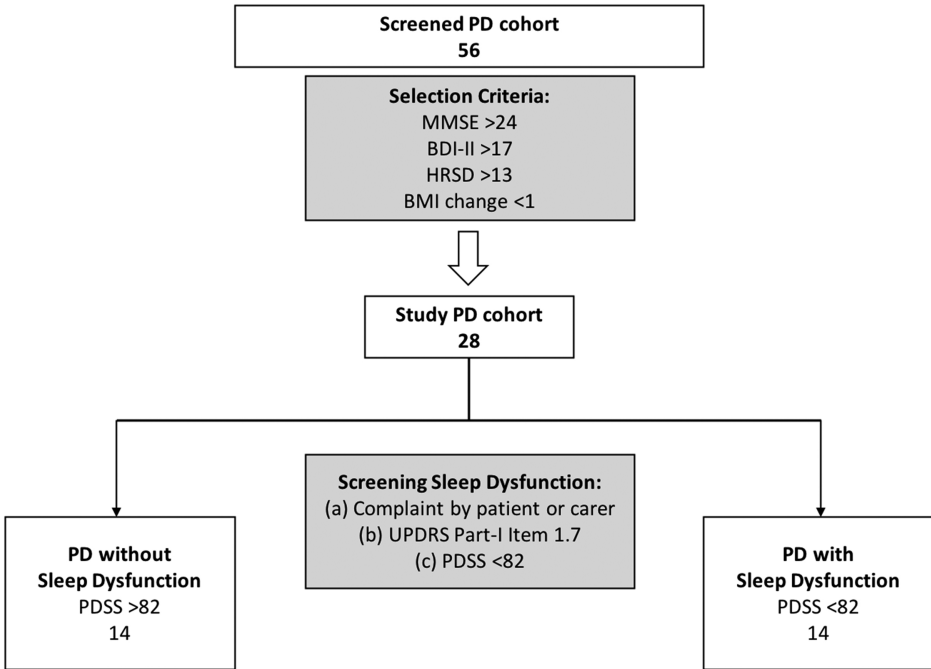


Figure 1

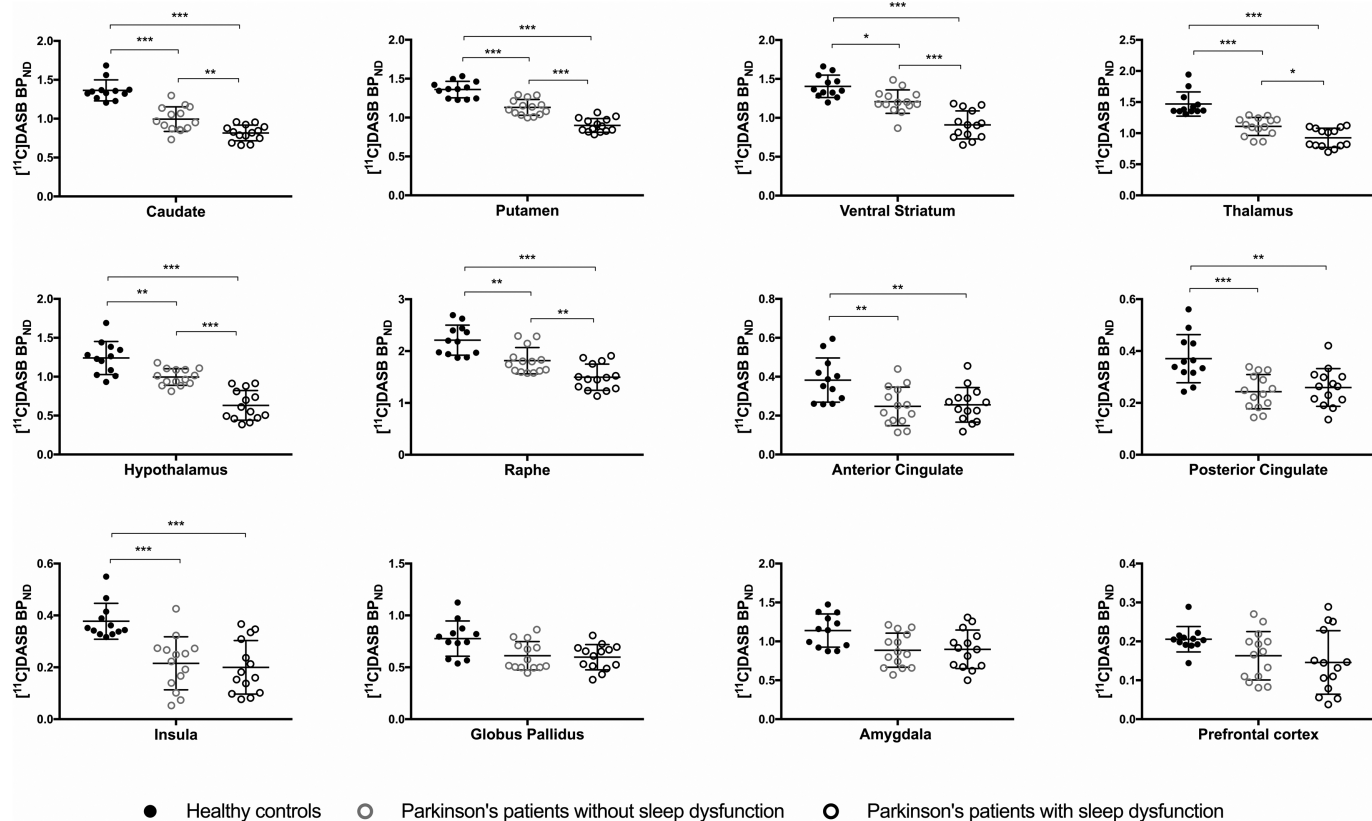


Figure 2

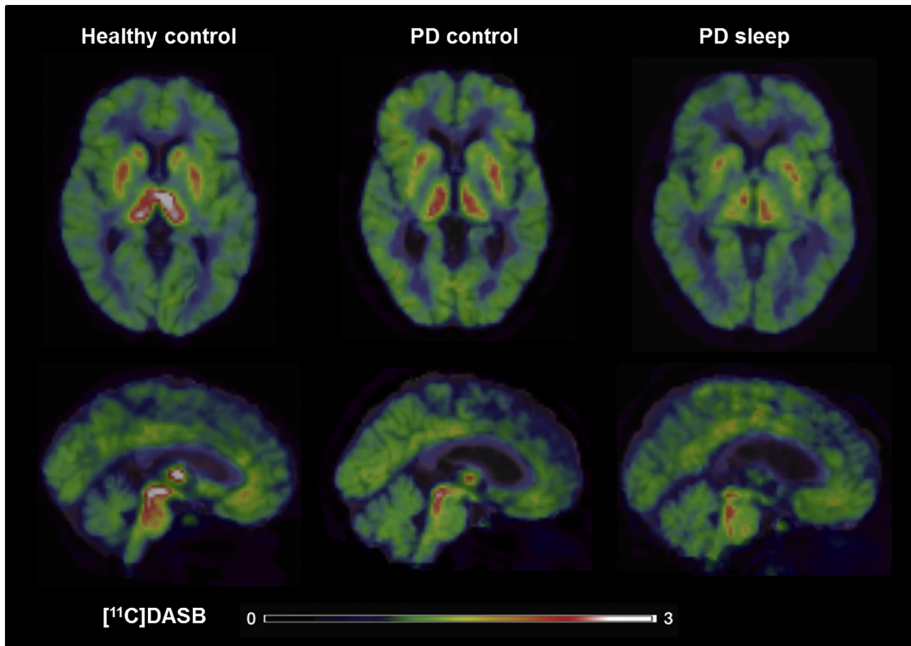


Figure 3

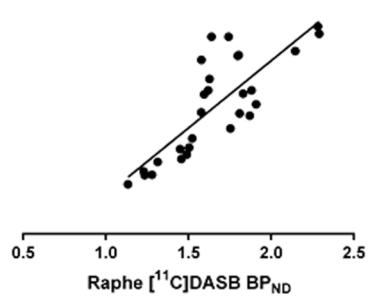
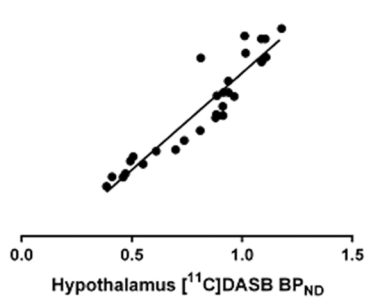
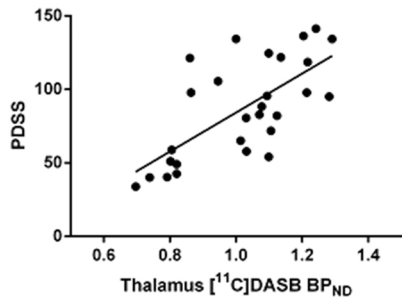
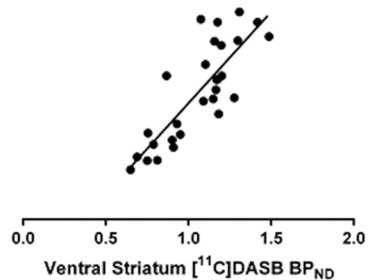
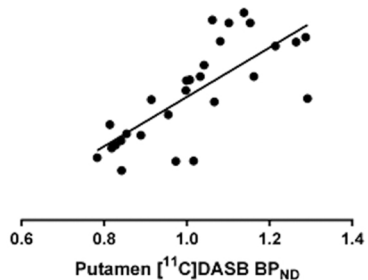
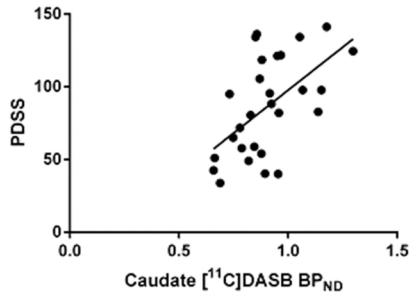


Figure 4