



King's Research Portal

DOI:

[10.1016/j.neuroimage.2017.12.030](https://doi.org/10.1016/j.neuroimage.2017.12.030)

Document Version

Peer reviewed version

[Link to publication record in King's Research Portal](#)

Citation for published version (APA):

O'Halloran, L., Cao, Z., Ruddy, K., Jollans, L., Albaugh, M. D., Aleni, A., Potter, A. S., Vahey, N., Banaschewski, T., Hohmann, S., Bokde, A. L. W., Bromberg, U., Büchel, C., Quinlan, E. B., Desrivieres, S., Flor, H., Frouin, V., Gowland, P., Heinz, A., ... Whelan, R. (2018). Neural circuitry underlying sustained attention in healthy adolescents and in ADHD symptomatology. *NeuroImage*, 169(0), 395-406.
<https://doi.org/10.1016/j.neuroimage.2017.12.030>

Citing this paper

Please note that where the full-text provided on King's Research Portal is the Author Accepted Manuscript or Post-Print version this may differ from the final Published version. If citing, it is advised that you check and use the publisher's definitive version for pagination, volume/issue, and date of publication details. And where the final published version is provided on the Research Portal, if citing you are again advised to check the publisher's website for any subsequent corrections.

General rights

Copyright and moral rights for the publications made accessible in the Research Portal are retained by the authors and/or other copyright owners and it is a condition of accessing publications that users recognize and abide by the legal requirements associated with these rights.

- Users may download and print one copy of any publication from the Research Portal for the purpose of private study or research.
- You may not further distribute the material or use it for any profit-making activity or commercial gain
- You may freely distribute the URL identifying the publication in the Research Portal

Take down policy

If you believe that this document breaches copyright please contact librarypure@kcl.ac.uk providing details, and we will remove access to the work immediately and investigate your claim.

Title: Neural circuitry underlying sustained attention in healthy adolescents and in ADHD symptomatology

Authors names and affiliations: Laura O'Halloran¹, Zhipeng Cao², Kathy Ruddy¹, Ph.D., Lee Jollans¹, Matthew D. Albaugh³ Ph.D., Andrea Aleni¹, Alexandra S. Potter³ Ph.D., Nigel Vahey¹ Ph.D., Tobias Banaschewski⁴ M.D., Ph.D., Sarah Hohmann⁴, M.D., Arun L.W. Bokde Ph.D.⁵, Uli Bromberg⁶, Dipl.-Psych., Christian Büchel⁶, M.D., Erin Burke Quinlan⁷, Ph.D., Sylvane Desrivieres⁷, Ph.D., Herta Flor^{8,9}, Ph.D., Vincent Frouin¹⁰, Ph.D., Penny Gowland¹¹, Ph.D., Andreas Heinz¹², Ph.D., Bernd Ittermann¹³, Ph.D., Frauke Nees^{4,8}, Ph.D., Dimitri Papadopoulos Orfanos¹⁰, Ph.D., Tomáš Paus¹⁹, M.D.: Ph.D., Michael N. Smolka²⁰, M.D., Henrik Walter¹², M.D., Ph.D., Gunter Schumann⁷, M.D., Hugh Garavan³, Ph.D., Clare Kelly¹, Ph.D., Robert Whelan^{1,22}, Ph.D. IMAGEN Consortium

¹School of Psychology and Institute of Neuroscience, Trinity College Dublin, Dublin 2, Ireland;

²School of Psychology, University College Dublin, Dublin 4, Ireland

³Departments of Psychiatry and Psychology, University of Vermont, 05405 Burlington, Vermont, USA;

⁴Department of Child and Adolescent Psychiatry and Psychotherapy, Central Institute of Mental Health, Medical Faculty Mannheim, Heidelberg University, Square J5, 68159 Mannheim, Germany;

⁵Discipline of Psychiatry, School of Medicine and Trinity College Institute of Neuroscience, Trinity College Dublin, Dublin 2, Ireland;

⁶University Medical Centre Hamburg-Eppendorf, House W34, 3.OG, Martinistr. 52, 20246, Hamburg, Germany;

⁷Medical Research Council - Social, Genetic and Developmental Psychiatry Centre, Institute of Psychiatry, Psychology & Neuroscience, King's College London, United Kingdom;

⁸Department of Cognitive and Clinical Neuroscience, Central Institute of Mental Health, Medical Faculty Mannheim, Heidelberg University, Square J5, Mannheim, Germany;

⁹ Department of Psychology, School of Social Sciences, University of Mannheim, 68131 Mannheim, Germany;

¹⁰ NeuroSpin, CEA, Université Paris-Saclay, F-91191 Gif-sur-Yvette, France ;

¹¹Sir Peter Mansfield Imaging Centre School of Physics and Astronomy, University of Nottingham, University Park, Nottingham, United Kingdom;

¹²Department of Psychiatry and Psychotherapy, Campus Charité Mitte, Charité, Universitätsmedizin Berlin, Charitéplatz 1, Berlin, Germany;

¹³Physikalisch-Technische Bundesanstalt (PTB), Braunschweig and Berlin, Germany [or depending on journal requirements can be: Physikalisch-Technische Bundesanstalt (PTB), Abbestr. 2 - 12, Berlin, Germany];

¹⁸Institut National de la Santé et de la Recherche Médicale, INSERM Unit 1000 "Neuroimaging & Psychiatry", Faculté de médecine, Université Paris-Sud, Le Kremlin-Bicêtre; and Université Paris Descartes, Sorbonne Paris Cité, Paris, France;

¹⁹Rotman Research Institute, Baycrest and Departments of Psychology and Psychiatry, University of Toronto, Toronto, Ontario, M6A 2E1, Canada;

²⁰Department of Psychiatry and Neuroimaging Center, Technische Universität Dresden, Dresden, Germany;

²¹Clinic for Child and Adolescent Psychiatry, Medical University of Vienna, Währinger Gürtel 18-20, 1090, Vienna, Austria;

²² Global Brain Health Institute, Trinity College Dublin, Ireland;

Disclosures

Dr. Banaschewski has served as an advisor or consultant to Bristol-Myers Squibb, Desitin Arzneimittel, Eli Lilly, Medice, Novartis, Pfizer, Shire, UCB, and Vifor Pharma; he has received attendance support, conference support, or speaking fees from Eli Lilly, Janssen McNeil, Medice, Novartis, Shire, and UCB; and he is involved in clinical trials conducted by Eli Lilly, Novartis, and Shire; the present work is unrelated to these relationships. The other authors report no biomedical financial interests or potential conflicts of interest.

Acknowledgments

This work received support from the following sources: L. O'Halloran, L. Jollans and K. Ruddy are supported by The Irish Research Council (GOIPG/2016/1635; GOIPG/2014/418; GOIPD/2017/798). Z. Cao is supported by China Scholarship Council. R. Whelan is supported by Science Foundation Ireland (16/ERCD/3797) and a Brain and Behavior Research Foundation Young Investigator award (#23599). C. Kelly is supported by the National Institute of Mental Health (R03MH104334, PI: Kelly) and a Brain and Behavior Research Foundation Young Investigator award (#24065). This work received support from the following sources: the European Union-funded FP6 Integrated Project IMAGEN (Reinforcement-related behaviour in normal brain function and psychopathology) (LSHM-CT- 2007-037286), the Horizon 2020 funded ERC Advanced Grant 'STRATIFY' (Brain network based stratification of reinforcement-related disorders) (695313), ERANID (Understanding the Interplay between Cultural, Biological and Subjective Factors in Drug Use Pathways) (PR-

ST-0416-10004), BRIDGET (JPND: BBrain Imaging, cognition Dementia and next generation GENomics) (MR/N027558/1), the FP7 projects IMAGEMEND(602450; IMAGING GENetics for MENTAL Disorders) and MATRICS (603016), the Innovative Medicine Initiative Project EU-AIMS (115300-2), the Medical Research Council Grant 'c-VEDA' (Consortium on Vulnerability to Externalizing Disorders and Addictions) (MR/N000390/1), the Swedish Research Council FORMAS, the Medical Research Council, the National Institute for Health Research (NIHR) Biomedical Research Centre at South London and Maudsley NHS Foundation Trust and King's College London, the Bundesministerium für Bildung und Forschung (BMBF grants 01GS08152; 01EV0711; eMED SysAlc01ZX1311A; Forschungsnetz AERIAL), the Deutsche Forschungsgemeinschaft (DFG grants SM 80/7-1, SM 80/7-2, SFB 940/1). Further support was provided by grants from: ANR (project AF12-NEUR0008-01 - WM2NA, and ANR-12-SAMA-0004), the Fondation de France, the Fondation pour la Recherche Médicale, the Mission Interministérielle de Lutte-contre-les-Drogues-et-les-Conduites-Addictives (MILDECA), the Assistance-Publique-Hôpitaux-de-Paris and INSERM (interface grant), Paris Sud University IDEX 2012; the National Institutes of Health, U.S.A. (Axon, Testosterone and Mental Health during Adolescence; RO1 MH085772-01A1), and by NIH Consortium grant U54 EB020403, supported by a cross-NIH alliance that funds Big Data to Knowledge Centres of Excellence.

Correspondence to Dr. Robert Whelan, School of Psychology, Trinity College Dublin, Dublin 2, Ireland.
Robert.whelan@tcd.ie

Abstract

Moment-to-moment reaction time variability on tasks of attention, often quantified by intra-individual response variability (IRV), provides a good indication of the degree to which an individual is vulnerable to lapses in sustained attention. Increased IRV is a hallmark of several disorders of attention, including Attention-Deficit/Hyperactivity Disorder (ADHD). Here, task-based fMRI was used to provide the first examination of how average brain activation and functional connectivity patterns in adolescents are related to individual differences in sustained attention as measured by IRV. We computed IRV in a large sample of adolescents (n=758) across 'Go' trials of a Stop Signal Task (SST). A data-driven, multi-step analysis approach was used to identify networks associated with low IRV (i.e., good sustained attention) and high IRV (i.e., poorer sustained attention). Low IRV was associated with greater functional segregation (i.e., stronger negative connectivity) amongst an array of brain networks, particularly between cerebellum and motor, cerebellum and prefrontal, and occipital and motor networks. In contrast, high IRV was associated with stronger positive connectivity within the motor network bilaterally and between motor and parietal, prefrontal, and limbic networks. Consistent with these observations, a separate sample of adolescents exhibiting elevated ADHD symptoms had increased fMRI activation and stronger positive connectivity within the same motor network denoting poorer sustained attention, compared to a matched asymptomatic control sample. With respect to the functional connectivity signature of low IRV, there were no statistically significant differences in networks denoting good sustained attention between the ADHD symptom group and asymptomatic control group. We propose that sustained attentional processes are facilitated by an array of neural networks working together, and provide an empirical account of how the functional role of the cerebellum extends to cognition in adolescents. This work highlights the involvement of motor cortex in the integrity of sustained attention, and suggests that atypically strong connectivity within motor networks characterizes poor attentional capacity in both typically developing and ADHD symptomatic adolescents.

Keywords: Functional connectivity, fMRI, Reaction-time variability, SST, Attention, ADHD

Introduction

The ability to efficiently and consistently maintain attentional resources on a moment-to-moment basis is central to our navigation of everyday life. Sustained attention can be examined behaviorally by measuring the intra-individual coefficient of variation (IRV), which examines within-person trial-to-trial reaction time (RT) inconsistency on a given cognitive task [1]. IRV is particularly advantageous in that it is a relatively simple measurement that controls for overall speed of responding (e.g., it can be calculated as the standard deviation of RT divided by mean RT). IRV may provide a better metric of cognitive impairment than other neuropsychological test measures, such as standardized cognitive or psychomotor tasks [2,3,4] or simple RT [5]. Attentional deficits are commonly reported in attention deficit hyperactivity disorder (ADHD) during both laboratory tasks and in daily life [6,7,8,9,10,11], with higher IRV commonly reported in ADHD [12,13,14,15,16,17,18].

Brain Correlates of Sustained Attention

Neuroimaging studies have identified brain regions involved in sustained attention. For example, task-based fMRI analysis in 42 adults showed that high IRV (i.e., poorer sustained attention) was associated with activation in the middle frontal gyrus (MFG), motor (precentral gyrus and pre-supplementary area; SMA), parietal, thalamic and insula regions [19]. In healthy adults, low IRV (i.e., better sustained attention) was associated with stronger activation of anterior cingulate cortex (ACC) during a response inhibition task (Go/no-go task) [20], and during a gradual onset continuous performance task [21]. In children (thirty 8-12-year-olds [22]), low IRV (i.e., better sustained attention) on a Go-No/Go task was associated with stronger Go activation in anterior cerebellum (culmen) and stronger No-Go activation in motor, frontoparietal (medial frontal gyrus; inferior parietal lobe, IPL) and cerebellar networks, while high IRV associated with stronger Go and No-Go activation in MFG, caudate and thalamus. To date, however, the brain correlates of sustained attention in healthy adolescents, as indexed by IRV, have not been comprehensively characterized. Furthermore, there has been a surge of interest not only in characterizing task-evoked regional activity, but also in discovering how such regions fit within large-scale neural networks in supporting sustained attention [23].

Recent research has posited that sustained attentional processes may emerge from an array of large-scale functional connectivity networks [24,25], rather than from single brain regions [26,27]. Functional connectivity – synchronous fluctuations in neural activity across the brain – can be measured by correlating the blood oxygenation level-dependent (BOLD) signal time course between two brain regions. The *dorsal attention network* (DAN; comprising intraparietal sulcus (IPS), superior parietal lobule; primate frontal eye fields, and inferior pre-central sulcus) and *frontoparietal network* have been established for their involvement in sustained attention [28,29]. Stronger anticorrelations between task-positive networks and the default mode network (DMN; including medial prefrontal cortex, posterior cingulate, anterior temporal and precuneus) is associated lower IRV [30]. However, the extent to which other networks outside classic vigilance networks (e.g., cerebellum) contribute to sustaining attention is less well understood [23,31]. One study in particular [32] examined the relationship between task-based functional connectivity and sustained attention (a measure of sensitivity called d' on a gradual-onset continuous performance task) in 25 healthy adults. They identified a low sustained attention network whose connectivity was associated with poorer sustained attention (low d'), and a high sustained attention network whose connectivity was associated with better sustained attention (high d'). The authors also tested the generalizability of these

networks in comparison to separate resting-state data. Stronger connectivity between cerebellum with motor and occipital networks, and occipital with motor networks predicted better sustained attention. In contrast, stronger connectivity between temporal and parietal regions, and within the temporal lobe and cerebellum predicted poorer sustained attention, and also largely predicted ADHD symptom severity when applied to an independent sample of 113 8-16 year-olds with and without a diagnosis of ADHD. However, the d' measure used to assess sustained attention in this case likely captures a different facet of sustained attention than IRV. Moreover, examining commonalities in the brain networks implicated in sustained attention across different behavioral measures and datasets is an important step in elucidating the neural underpinning of individual differences in response variability.

IRV and ADHD

Functional connectivity in brain regions that have been previously implicated in poor attentional capacity in healthy (adult) individuals may also be disrupted in individuals with ADHD [32]. ADHD is associated with altered functional connectivity within and between the default, motor, cerebellar and frontoparietal networks [33,34], although findings in relation to functional connectivity and ADHD remain relatively heterogeneous [35]. Neurological and psychopathological research is increasingly revealing a *dimensionality* aspect to developmental disorders such as ADHD [36] and conceptualizing attention-related traits as existing along a continuum shifts the focus from diagnostic groups towards diagnostic dimensions [37]. For example, reduced ventromedial prefrontal gray matter volume was associated with increased IRV in adolescents with elevated ADHD symptoms [38]. Therefore, it is plausible that the (disrupted) functional connectivity patterns related to IRV in ADHD may be apparent among those with subclinical attention difficulties. This has yet to be examined.

The Present Study

In this study, we first sought to examine the relationship between fMRI activation and sustained attention, as measured by IRV on trials requiring a speeded response, in a large, normative sample of adolescents. This analysis identified a number of significant clusters, activation in which was then compared between a separate group of adolescents with ADHD symptoms and a matched asymptomatic control group. Next, given that sustained attention may be better characterised by the dynamic interactions of large scale brain networks than the degree of neural activation within single brain regions [12,14,17,30,31], we examined the relationship between functional connectivity patterns and IRV in the normative sample. We computed a task-based functional connectivity matrix by correlating the BOLD signal time courses of every pair of regions in a 268-node brain atlas [39]. This connectivity matrix was then correlated with each individual's IRV score, in order to identify networks associated with high and low IRV. Finally, we compared the IRV-linked networks identified in the normative sample between the ADHD symptom group and control group.

Materials and Methods

Participants

Fourteen-year-olds were recruited at eight sites, and completed two fMRI sessions, psychiatric and neuropsychological assessments. Details of the full study protocol and data acquisition have been provided previously [40] (http://www.imagen-europe.com/en/Publications_and_SOP.php). Here, participants were allocated to one of three separate groups. The first was designated as the *normative sample* (n=758; Table 1). The second, the *ADHD symptom* sample, (n=30; Table 2) were selected according to the total score of ADHD parent ratings on the Development and Well Being Assessment (DAWBA; description below), with a threshold of two standard deviations higher than the mean ADHD score of the Imagen sample. A third group, the *asymptomatic control* sample (n=30; Table 2), had scores of 0 on the DAWBA for ADHD symptoms, and were matched for age, sex, recruitment sites, handedness, pubertal development, performance IQ and verbal IQ to the ADHD symptom group.

Development and WellBeing Assessment (DAWBA) Interview

The DAWBA [41] is a structured set of questions designed to generate DSM-IV psychiatric diagnoses for children and adolescents aged 5–17 years. The ADHD subscale of the DAWBA consists of 31 questions, and includes specific ADHD subscales: hyperactive-impulsive, inattentive and combined. The DAWBA was administered to parents of the adolescents by questionnaire, under the supervision of a research assistant. Groups were constructed based on similar symptom cut-offs suggested by previous studies examining sub-clinical ADHD [42,43]. The three subscales were added together to form an ADHD total score and the cut-off score for ADHD symptoms was calculated as two standard deviations from the mean total score, while a score of zero was required in order to classify a participant as a member of the control group (i.e. asymptomatic with respect to ADHD).

Wechsler Intelligence Scale for Children

Participants completed a version of the Wechsler Intelligence Scale for Children (WISC-IV) [44], which included the following subscales: Perceptual Reasoning, consisting of *Block Design* (arranging bi-colored blocks to duplicate a printed image) and *Matrix Reasoning* (the participant is presented with a series of colored matrices and must select the consistent pattern from a range of options); and Verbal Comprehension, consisting of *Similarities* (two similar but different objects or concepts are presented to the participant and they must explain how they are alike or different) and *Vocabulary* (a picture is presented or a word is spoken aloud by the experimenter and the participant is asked to provide the name of the depicted object or to define the word).

Puberty Development Scale (PDS)

The PDS scale [45] assessed the pubertal status of the adolescent sample, by means of an eight-item self-report measure of physical development based on the Tanner stages, with separate forms for males and females. For this scale, there are five categories of pubertal status: (1) prepubertal, (2) beginning pubertal, (3) midpubertal, (4) advanced pubertal, (5) postpubertal. Participants answered questions about their growth in stature and pubic hair, as well as menarche in females and voice

changes in males.

Stop Signal Task

Participants performed an adaptive event-related Stop Signal Task (SST) [46,47], which took approximately 16 minutes to complete. The task consisted of 400 Go trials intermingled with 80 Stop trials; with between 3 and 7 Go trials between successive Stop trials. During Go trials participants were presented with arrows pointing either to the left or right, shown centrally on a screen for 1000 ms. During Go trials participants were required to make a single button-press response with their left or right index finger corresponding to the direction of the arrow. In the unpredictable Stop trials, the arrows pointing left or right were followed (on average 300 ms later) by arrows pointing upwards (i.e. the Stop signal, shown for 100–300 ms), which required participants to inhibit their motor responses during these trials. A tracking algorithm [46,47] adjusted task difficulty by varying the stop-signal delay (SSD; the time interval between Go signal and Stop signal onsets; 250–900 ms in 50-ms increments), in accordance with each participant's performance on previous trials (average percentage of inhibition over previous Stop trials, recalculated after each Stop trial). The aim of this was to produce 50% successful and 50% unsuccessful inhibition trials. The inter-trial interval was jittered between 1.6 and 2.0 s (mean: 1.8 s) to enhance statistical efficiency [48]. If the participant responded to the Go stimulus before Stop stimulus presentation (i.e. stop too early; STE), then the trial was repeated (up to a maximum of seven trials).

We calculated each participants' Stop Signal RT (SSRT), an index of inhibitory function, by subtracting the mean stop-signal delay (SSD) from the Go RT at the percentile corresponding to the proportion of unsuccessful stop trials. In other words, the SSRT refers to the time taken to cancel a prepotent motor response after Stop stimulus presentation. IRV was calculated by dividing each individual's standard deviation of mean Go RT scores by their mean Go RT scores.

MRI acquisition and analysis

Functional MRI data were collected at eight IMAGEN sites (London, Nottingham, Dublin, Mannheim, Dresden, Berlin, Hamburg, and Paris) with 3T MRI systems made by various manufacturers (Siemens: 4 sites, Philips: 2 sites, General Electric: 1 site, and Bruker: 1 site). Standardized hardware for visual stimulus presentation (Nordic Neurolab, Bergen, Norway) was used at all sites. The MR scanning protocols, cross-site standardization and quality checks are further described in [40]. Functional runs included 444 whole-brain volumes acquired for each participant using echo-planar imaging (EPI) sequence. Each volume contained 40 axial slices aligned to the anterior commissure–posterior commissure (AC–PC) line (2.4-mm slice thickness, 1-mm slice gap). The echo time (TE) was optimized (TE = 30 ms, repetition time 2200 ms; flip angle = 75°; acquisition matrix = 64 × 64) to provide reliable imaging of subcortical areas.

Preprocessing. Preprocessing of the fMRI imaging data from IMAGEN was performed centrally using an automated pipeline with SPM8 (Statistical Parametric Mapping, (<http://www.fil.ion.ucl.ac.uk/spm/>)). fMRI BOLD images were co-registered with the T1W structural image (MPRAGE). Functional images were then realigned to correct for head motion and slice-time corrected using the first slice (top-down scanning) as reference for interpolation. T1W images were spatially

normalized and non-linearly warped on Montreal Neurological Institute Coordinate System (MNI) space, using a custom EPI template. The custom template ($53 \times 63 \times 46$ voxels) was based on a subset of 240 participants' (30 from each of IMAGEN's eight sites) mean 480 EPI images that showed good spatial normalization, as measured by the overlap quality between individual EPI masks and the MNI mask (EPI images were spatially-realigned and their temporal-mean image was rigidly co-registered to their respective anatomical image). This normalization was applied to the EPI, and EPIs were then averaged to form an EPI template that was subsequently applied to all T1W data. Voxels were resampled at a resolution of $3 \times 3 \times 3$ mm. The functional data was then smoothed with a 4-mm full width half maximum Gaussian isotropic kernel. The contrast images were subsequently analyzed using SPM12 (<http://www.fil.ion.ucl.ac.uk/spm/software/spm12>) and custom Matlab scripts (Mathworks).

fMRI Activation. First-level activation maps were computed for go-trials, stop-success trials, and stop-fail trials versus baseline in individually specified general linear models (GLM). Design matrices included regressors for stop-success trials, stop-failure trials, Go too-late response trials, Go wrong response trials (i.e. wrong button press), movement parameters, and nuisance covariates (age, sex, pubertal status, handedness, performance IQ, verbal IQ, and data collection sites). On the second level, average fMRI activation for go-trials, stop-success trials, and stop-fail contrasts were each correlated with IRV for the normative sample using SPM12. Uncorrected p -values of .001 (recommended as the minimum lower limit [49,50]), and a cluster extent of 32 contiguous voxels were used to provide a corrected family-wise error rate of $p < .05$. Significant clusters from each statistical parametric maps for the three contrasts were anatomically labelled by examining the MNI coordinates to xjview (<http://www.alivelearn.net/xjview>). Mean beta values from the significant clusters derived from the normative samples were extracted for the ADHD symptom group and asymptomatic control group. Between-group two-sample t -tests were performed to compare regions of interest (ROI) between groups. Bonferroni correction was applied based on the total number of ROIs.

Task-based Functional Connectivity. Whole-brain task-based functional connectivity was calculated using the following approach: We first removed the effect of Stop trials from the fMRI time series (using a similar principle to that described in [51]). Specifically, we generated a general linear model (GLM) that included Stop-fail and stop-success trials and movement parameters. The Go condition (83% of trials) was not explicitly modelled. The residuals from this GLM, with stop-related activity and movement removed, were used in the task-based connectivity analysis. ROIs were derived from a 268-node functional brain atlas (referred to as the 'Shen atlas') that encompasses fine-grained, spatially homogeneous functional parcellations of the entire brain, including cortex, subcortical areas, and cerebellum, which serve as nodes for network analysis [39]. Network labels, Brodmann areas (BA), and Montreal Neurological Institute (MNI) coordinates were automatically generated, and comprises ROIs with more coherent time courses than those defined by other atlases (e.g. automatic anatomic labeling atlas [39]). For each participant, the ROI timecourse was calculated by averaging the BOLD signal of all of its constituent voxels. This yielded 444×268 data points for each participant.

Since head motion occurs at low frequencies as intrinsic blood-oxygen level-dependent (BOLD) signal fluctuations, it can generate discrete neural artifacts that cannot be subjugated by increasing sample size or scan duration [35]. In order

to further control for head motion artifacts, we included framewise displacement as a nuisance covariate in all connectivity analyses when computing partial correlations between functional connections and IRV (see below). Framewise displacement was defined as the sum of absolute scan to scan difference of the six translational and rotational realignment parameters [52]. We also conducted additional analyses to exclude head motion as a cause of spurious results: these analyses are described in Supplemental Information. The global signal (GS; average value across all gray-matter voxels) was included as a nuisance covariate once when computing the partial correlation between ROIs for each group (see below). The GS mitigates against between-subject effects of head motion [see 53,54]. Although GS regression can bias group differences by enhancing anti-correlated connections, and some caution should be taken when interpreting results [55], much of the variance in the global signal can be explained by head motion, respiratory noise, and scanner hardware-related artifacts [56].

A partial Pearson's correlation score was calculated among the 268 ROIs to determine their pairwise functional connectivity strength, with GS regressed as a nuisance covariate at this point. This yielded a connectivity matrix of size 268×268 , with 35,778 unique connections between ROIs for each individual. Data file Supplemental_data_1.mat contains all pairwise correlations for all subjects. Matrices were not thresholded based on raw connection strength, allowing us to consider both low-variance connections (i.e., those that are consistently strongly positive or strongly negative across participants) and high-variance connections (i.e., those that are positive in some participants and negative in others); the latter, especially, may contain signal related to individual differences in IRV (see [57,58]).

Functional connectivity correlated with behavior. To assess the relevance of functional connections to behavior the following analysis was performed: The 268×268 matrix of connections between ROIs was correlated with each participant's IRV across the normative sample. Framewise displacement, age, sex, pubertal status, handedness, performance IQ, verbal IQ, and data collection site were nuisance covariate regressors. Type 1 error was estimated via random-label permutation by randomly shuffling IRV across participants and re-running the correlation analysis 1000 times in order to obtain an empirical null distribution. This analysis quantifies the probability of obtaining a particular r value between IRV and functional connectivity by chance. The observed r values between IRV and functional connectivity were considered significant if their associated p value exceeded a particular percentile of the random-label permutation. The resulting thresholded matrix consisted of connections between ROIs that were negatively correlated with IRV (i.e., indexing good sustained attention) and connections between ROIs that were positively correlated with IRV (i.e., indexing poor sustained attention). This thresholding was repeated using a series of significance thresholds ($p < 0.001$, and $p < 0.0001$) to identify networks associated with the task. Regional and network labels for the significant results were obtained from the previously available Shen atlas.

Having identified connections between ROIs that were significantly positively and negatively related to IRV using the $p < 0.001$ cutoff, (for comparison to similar research [32]), we extracted and computed the same connections for the ADHD symptom and asymptomatic control groups. For each functional connection, the r -values were Fisher-normalized and then averaged across participants, within the ADHD symptom and asymptomatic control groups. This yielded two matrices for each group 1) connections positively correlated with IRV and 2) connections negatively correlated with IRV. Between-group two-sample t -tests were then conducted to examine group differences for each of these two connection types.

RESULTS

Table 1 displays the summary characteristics of the normative sample and Table 2 displays the summary characteristics for the ADHD and control groups.

TABLE 1: Summary statistics for the normative sample

	Normative sample ($n=758$)[‡]
Age (years)	14.55 (0.45)
Sex	425 Females
Handedness	664 Right
Pubertal Development	3 (0.69)
Performance IQ	110 (14)
Verbal IQ	113 (13)
IRV	0.235 (.038)
‘Go’ trial RT St. Dev. (ms)	101 (24)
‘Go’ trial mean RT (ms)	429 (61)
SSRT	217(37)
Head Motion (Framewise displacement)	0.212 (.139)
Head Motion/IRV correlation	.22 [†]

[‡] Mean (standard deviation), unless otherwise indicated [†] Spearman correlation, $p < .0001$

TABLE 2: Summary statistics for ADHD symptom and asymptomatic control groups

	ADHD ($n=30$)	Control ($n=30$)	<i>p</i>
ADHD Total Score (DAWBA)	43 (9.83)	0	
Age	14(0.38)	14(0.41)	.16 [†]
Sex	26 Males	23 Males	.32 ^{††}
Handedness	27 Right	24 Right	.28 ^{††}
Pubertal Development	3 (0.50)	3 (0.71)	.66 ^{†††}
Performance IQ	101 (13.06)	103 (15.11)	.61 [†]
Verbal IQ	109 (17.20)	105 (17.97)	.48 [†]
IRV	0.258 (0.04)	0.228 (0.36)	<.005 [†]
‘Go’ trial St. Dev. (ms)	115 (26.20)	90 (22.26)	<.005 [†]

'Go' trial mean RT (ms)	446 (72)	391 (58.56)	<.005 [†]
SSRT	231(39)	228(41)	.76 [†]
Head Motion (Frame-wise displacement)	0.291 (0.218)	0.195 (0.100)	.03 [†]
Head Motion/IRV correlation	-.03 [†]	.08 [†]	

[†] Two-sample two-tailed *t* test ^{††} Chi-square test ^{†††} Non-parametric Mann-Whitney U test ^{††††} Spearman correlation, *p* > .05

Behavioral Results

The standard deviation of Go trial RT significantly correlated with the mean Go trial RT for the normative sample ($r = 0.77$, $p < .001$), the ADHD symptom group ($r = 0.67$, $p < .001$) and asymptomatic control group ($r = 0.72$, $p < .001$). The ADHD symptom group had significantly greater IRV ($M = 0.258$) than the matched asymptomatic control group ($M = .228$, $t(58) = -2.951$, $p = .005$), and significantly greater IRV than the normative sample ($M = .235$, $t(786) = -3.216$, $p = .001$), while there was no significant difference in IRV between the normative sample and control group ($t(786) = -1.026$, $p = .305$). SSRT was not significantly correlated with IRV for the normative sample ($r = .06$, $p = .09$), the ADHD sample ($r = .24$, $p = .19$), or the control group ($r = -.08$, $p = .66$).

fMRI Activation Results

Normative Sample. Whole-brain task activity (for Go trials, Stop Success and Stop Fail trials) significantly correlated with IRV in several brain areas in the normative sample (see Table 3 and Figure 1). During Go trials, IRV was positively correlated with activation in bilateral postcentral gyrus, fusiform gyrus, superior temporal gyrus (STG), and right insula and precuneus. During Stop Fail trials, IRV was positively correlated with activation in left postcentral gyrus, and was negatively correlated with activation in insula bilaterally and right anterior cingulate cortex (ACC). During Stop Success trials, IRV was positively correlated with activation in precentral gyrus bilaterally, left postcentral gyrus, right SMA, left medial orbitofrontal cortex (OFC), precuneus bilaterally, and left superior temporal gyrus (STG). During Stop Success trials, IRV was negatively correlated with activation in right MFG and insula bilaterally.

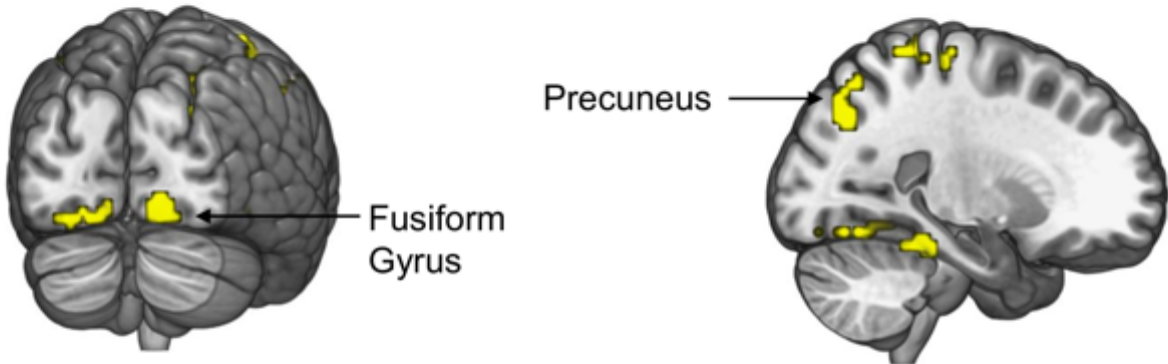
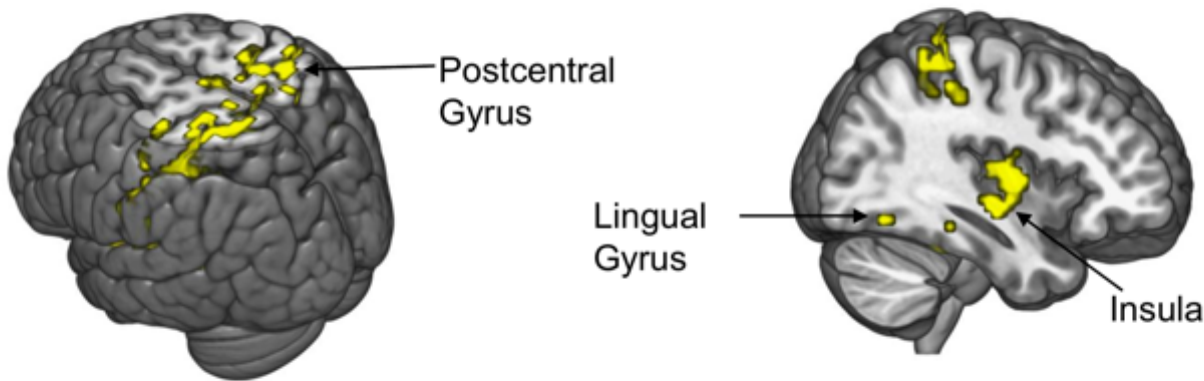
ADHD Symptom & Control Groups. Compared to the control group, the ADHD symptom group had significantly greater activation in left postcentral gyrus during Stop Fail trials (ADHD $m = .30$, control $m = -.20$, $p = .03$), during Stop Success trials (ADHD $m = .12$, control $m = -.27$, $p = .03$). No other significant differences emerged (using $p < 0.003$ the Bonferroni-corrected threshold for statistical significance).

Table 3: fMRI Activation correlated with IRV (Normative sample)

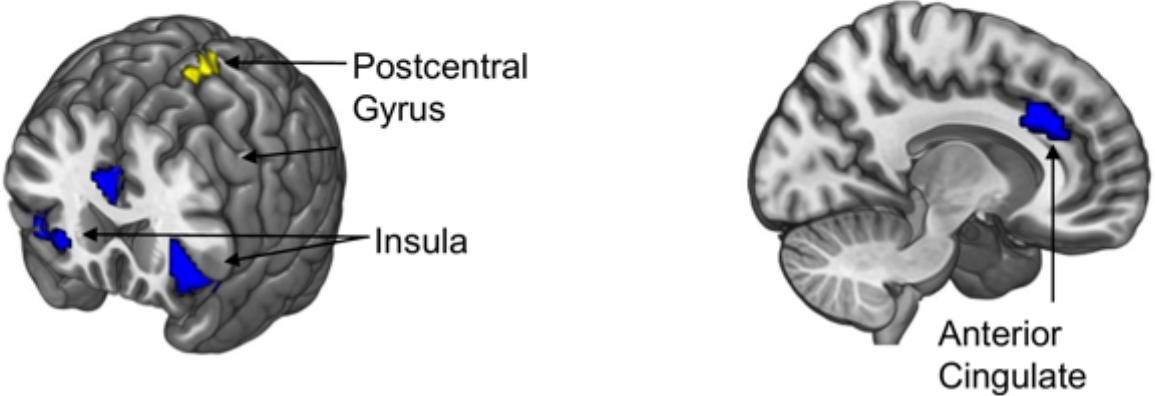
Brain Region (direction of effect)	Brodmann Area	Cluster Size	Z score	Montreal Neurological Institute (MNI) Coordinates		
				x	y	z
Go trial (Positive)						
Postcentral Gyrus R		280	4.564	60	-28	46
Postcentral Gyrus L		405	5.083	-45	-25	64
Insula R		54	4.908	39	-7	1
Fusiform Gyrus (Occipital) L	18	47	4.903	-21	-76	-14
Fusiform Gyrus (Occipital) R		41	4.884	21	-34	-20
Lingual Gyrus (Occipital) R		113	5.143	18	-85	-8
Precuneus R		39	4.713	27	-70	37
STG L	22	50	4.368	-54	-10	7
STG L	41	47	4.237	-45	-25	7
Paracentral Lobule		43	3.866	-3	-19	64
Stop Fail (Positive)						
Postcentral Gyrus L	3 4 6	102	4.447	-15	-28	76
Stop Fail (Negative)						
Insula L	13 47	105	5.062	-36	14	-2
Insula R	13 47	96	4.827	42	17	-5
ACC R	424	85	4.442	3	23	25
Stop Success (Positive)						
Precentral Gyrus R	4 6	98	5.418	27	-25	76
Precentral Gyrus R	4 6	84	5.200	54	-7	52
Postcentral Gyrus L	3 4 6	127	5.086	-24	-31	55
SMA L	6	57	5.026	0	-22	61
Medial Orbitofrontal L	10	45	4.698	-6	62	-5
Precuneus L	31	176	4.499	-12	-55	16
Precuneus R	23	46	4.465	18	-58	19
Postcentral Gyrus L	3 4 6	52	4.222	-48	-13	49
STG L	22 6	37	3.898	-60	-16	4
Stop Success (Negative)						
MFG R	8 9	39	4.699	48	11	43
Insula R	13 47	52	4.675	45	17	-5
Insula L	13 47	34	4.485	-36	14	-2

*All regions survived corrections for multiple comparisons (FWE $p < 0.05$) at the whole brain cluster level. Abbreviations: L=Left, R=Right, PCC=Posterior Cingulate Cortex, MOG=Middle Occipital Gyrus, ACC=Anterior Cingulate Cortex, SMA=Supplementary Motor Area, OFC=Orbitofrontal cortex, STG Superior Temporal Gyrus, MFG=Middle Frontal Gyrus

A. Go



B. Stop Fail



C. Stop Success

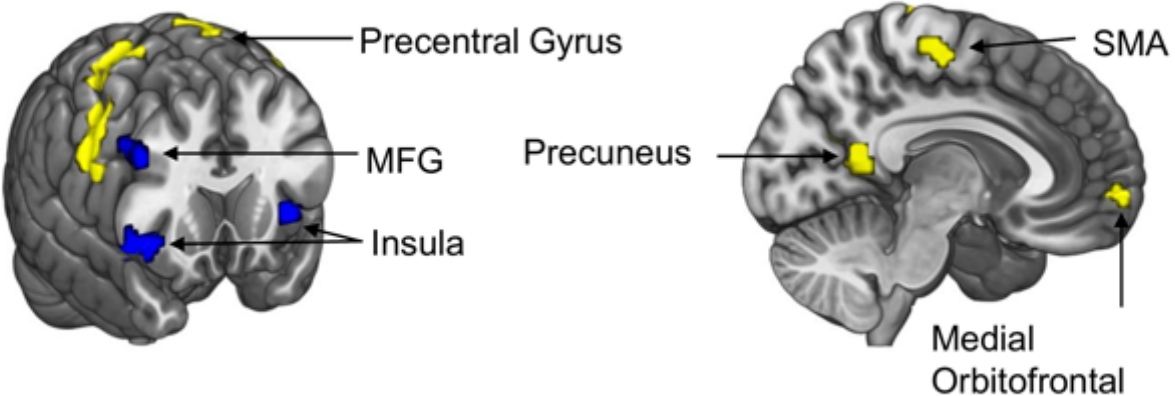


Figure 1. ROIs that positively correlated with IRV (yellow; poor sustained attention) and negatively correlated with IRV (blue; good sustained attention) for the normative sample during (A) Go trials (B) Stop Fail and (C) Stop Success trials. Average fMRI activation images were created using MRICroGL software (<http://www.cabiatl.com/mricrogl/>).

Functional connectivity results

At the significance threshold of $p < 0.001$ (absolute r -value $> .12$ derived from null models), 1368 connections between ROIs were associated with IRV. Networks linked with high and low IRV were identified (Figure 2). The networks linked with high IRV (i.e., poor sustained attention) were primarily characterized by positive correlations between ROIs (610 connections between ROIs, 80% of which were positively correlated), while the networks linked with low IRV (i.e., good sustained attention) were primarily characterized by negative correlations between ROIs (758 connections between ROIs, 86.7% of which were anticorrelated). In order to aid the interpretation of the findings [59] the top connections between ROIs correlated with IRV are reported in Table 4, Figure 2 & Video 1 (full results contained in the Supplemental Data File 1 folder).

Functional anatomy of attention networks. Network anatomy was intricate. However, several trends emerged (see Figure 2). Connections positively correlated with IRV (i.e. poor sustained attention) were primarily located bilaterally within the motor network and between motor with parietal, prefrontal and limbic networks. The top 10 nodes positively correlated with IRV comprised positively correlated connections between ROIs between and within bilateral precentral and postcentral gyri. Connections negatively correlated with IRV (i.e. good sustained attention) were primarily negative (i.e., anti-correlated), indexing functional segregation between cerebellum with motor, prefrontal and parietal regions, and between occipital and motor networks. The top 10 connections between ROIs negatively correlated with IRV consisted of anti-correlations between left cerebellum crus I/II and right precentral/postcentral gyri.

ADHD Symptom & Control Groups. With respect to connections associated with high IRV (i.e., poor sustained attention), the ADHD symptom exhibited significantly stronger positive connectivity between ROIs (Fisher-normalized r value = .207) than the control group (Fisher-normalized r value = .156 $t(1218) = 2.92$, $p = .003$). There were no significant group differences in mean correlation strength for connections associated with low IRV (ADHD group, Fisher-normalized r value $m = -.132$; control group, Fisher-normalized r value $m = -.148$, $t(1514) = 1.34$, $p = .177$) See Figure 3.

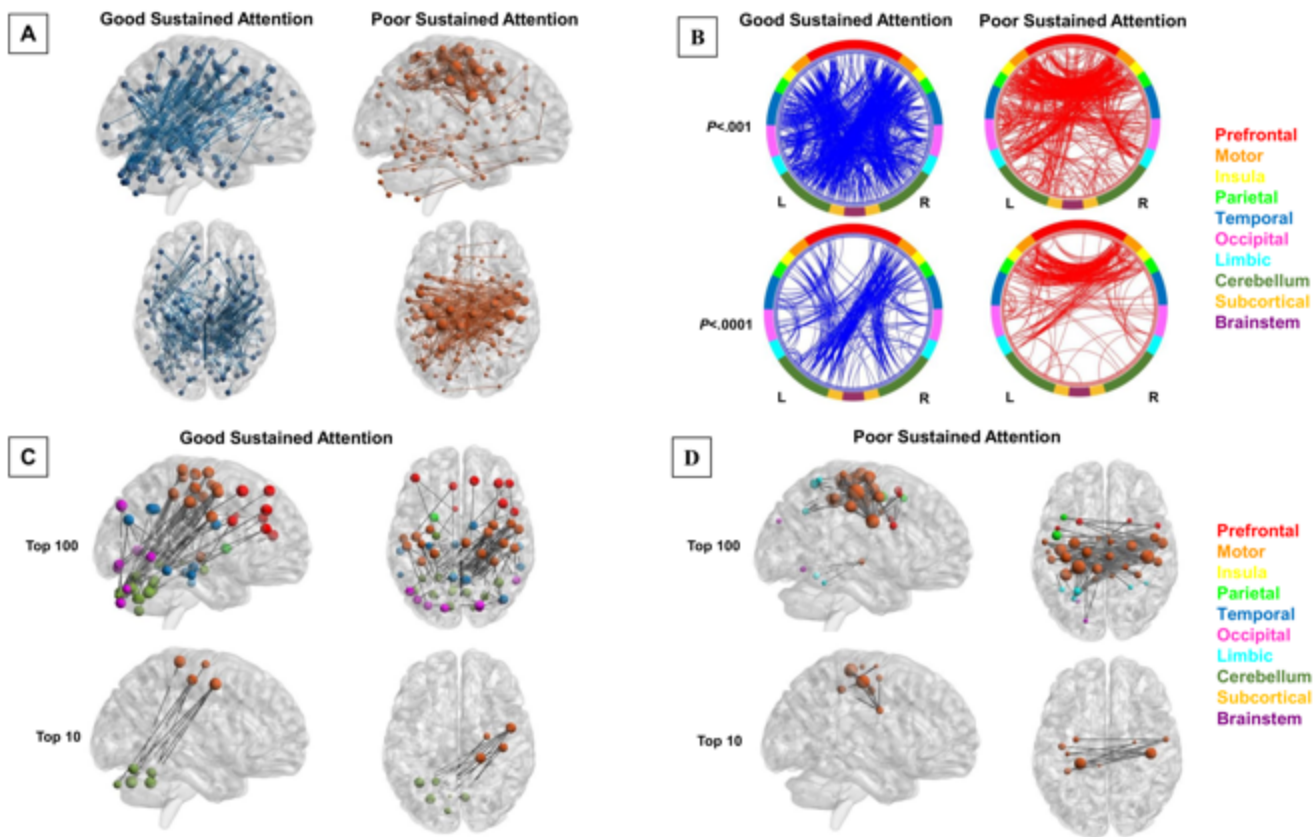
50 **Table 4: Top 30 Connections between ROIs Correlated with IRV**

Brain Region 1	Brain Region 2	Hem 1	Hem 2	BA 1	BA 2	MNI			MNI			Normative	Control	ADHD		
						1			2			FC & IRV	FC			
						x	y	z	x	y	z	p	r	r	r	r
<i>High Sustained Attention</i>																
Postcentral Gyrus	Cerebellum Crus 1	R	L	2		42	-22	52	-25	-71	-30	.00	-0.219	-0.124	0.056	0.017
Precentral Gyrus	Cerebellum VI	R	L	6		49	-3	49	-7	-68	-18	.00	-0.216	-0.373	-0.311	-0.548
Precentral Gyrus	Cerebellum Crus 1	R	L	6		49	-3	49	-25	-71	-30	.00	-0.21	-0.269	-0.199	-0.203
Postcentral Gyrus	Cerebellum Crus 2	R	L	2		42	-22	52	-9	-82	-32	.00	-0.205	-0.064	0.053	-0.144
SMA	Cerebellum Crus 1	R	L	6		27	-11	65	-25	-71	-30	.00	-0.204	-0.09	0.089	0.064
Precentral Gyrus	Cerebellum VI	R	L	6	38	49	-3	49	-20	-55	-22	.00	-0.2	-0.361	-0.244	-0.437
Precentral Gyrus	Cerebellum VI	R	R	6		49	-3	49	7	-69	-20	.00	-0.198	-0.308	-0.217	-0.488
Postcentral Gyrus	Cerebellum Crus 1	R	L	2	37	42	-22	52	-35	-55	-31	.00	-0.197	-0.163	-0.09	-0.017
Postcentral Gyrus	Cerebellum Crus 1	R	L	2		21	-32	67	-25	-71	-30	.00	-0.193	0.052	0.292	0.241
Precentral Gyrus	Cerebellum Crus 1	R	L	6	37	49	-3	49	-35	-55	-31	.00	-0.193	-0.29	-0.274	-0.256
Postcentral Gyrus	Cerebellum Crus 1	R	L	2		42	-22	52	-25	-71	-30	.00	-0.191	0.000	0.202	-0.038
Precentral Gyrus	Cerebellum Crus 2	R	L	6		49	-3	49	-9	-82	-32	.00	-0.191	-0.217	-0.209	-0.275
SMA	Cerebellum Crus 2	R	L	6		27	-11	65	-9	-82	-32	.00	-0.189	-0.053	0.014	-0.08
DLPFC	MTG	R	R	46	37	47	35	19	59	-45	-15	.00	-0.188	-0.412	-0.617	-0.352
Postcentral Gyrus	Cerebellum VI	R	L	2		42	-22	52	-7	-68	-18	.00	-0.187	-0.269	-0.153	-0.386
Precentral Gyrus	Cerebellum V	R	L	6		49	-3	49	-6	-56	-25	.00	-0.185	-0.359	-0.267	-0.506
Postcentral Gyrus	Cerebellum Crus 2	R	L	40		53	-27	41	-9	-82	-32	.00	-0.183	-0.147	-0.071	-0.12
Postcentral Gyrus	Cerebellum VI	R	R	2		42	-22	52	24	-73	-28	.00	-0.183	-0.018	0.153	-0.016
Postcentral Gyrus	Cerebellum Crus 1	R	L	40		53	-27	41	-25	-71	-30	.00	-0.181	-0.235	-0.09	0.000
Postcentral Gyrus	Cerebellum Crus 1	L	L	1		-36	-23	64	-25	-71	-30	.00	-0.179	-0.026	0.222	0.014
SMA	Cerebellum Crus 1	R	L	6	37	27	-11	65	-35	-55	-31	.00	-0.179	-0.119	-0.052	-0.04
SMA	Cerebellum VI	R	L	6		27	-11	65	-7	-68	-18	.00	-0.178	-0.287	-0.254	-0.398
Postcentral Gyrus	Cerebellum Crus 2	R	L	2		21	-32	67	-9	-82	-32	.00	-0.178	0.06	0.176	0.009
IPL	Cerebellum Crus 2	R	L	2		33	-39	48	-9	-82	-32	.00	-0.176	-0.02	0.003	-0.029
SMA	Cerebellum VI	R	R	6		27	-11	65	24	-73	-28	.00	-0.176	-0.011	0.111	0.097
MTG	DLPFC	R	L	37	46	59	-45	-15	-42	41	14	.00	-0.174	-0.372	-0.573	-0.314
IPL	Cerebellum Crus 1	R	L	2		33	-39	48	-25	-71	-30	.00	-0.174	-0.091	0.067	0.101
Postcentral Gyrus	Cerebellum Crus 2	L	L	1		-36	-23	64	-9	-82	-32	.00	-0.172	-0.052	0.167	-0.248
SFG	MTG	R	R	10	37	37	36	35	59	-45	-15	.00	-0.172	-0.437	-0.545	-0.308
Postcentral Gyrus	Cerebellum VI	R	L	40		53	-27	41	-7	-68	-18	.00	-0.171	-0.294	-0.165	-0.333

Low Sustained Attention

Precentral Gyrus	Postcentral Gyrus	R	L	2	1	42	-22	52	-24	-32	61	.00	0.243	0.307	0.318	0.579
Postcentral Gyrus	Postcentral Gyrus	R	L	2	4	42	-22	52	-41	-16	45	.00	0.227	0.206	0.02	0.047
Postcentral Gyrus	IPL	R	L	2	40	42	-22	52	-36	-39	46	.00	0.226	0.17	0.06	0.425
Precentral Gyrus	Postcentral Gyrus	R	L	4	1	57	-9	29	-24	-32	61	.00	0.223	-0.152	-0.261	-0.033
Precentral Gyrus	Claustrium	R	L	4	7	57	-9	29	-28	-9	55	.00	0.221	0.053	-0.132	-0.048
Precentral Gyrus	Postcentral Gyrus	R	L	4	1	57	-9	29	-36	-23	64	.00	0.216	-0.178	-0.441	0.002
Precentral Gyrus	IPL	R	L	4	40	57	-9	29	-36	-39	46	.00	0.215	-0.067	-0.318	0.026
MFG	IPL	R	L	6	40	27	-11	65	-36	-39	46	.00	0.212	0.19	0.22	0.393
Postcentral Gyrus	Postcentral Gyrus	R	L	2	1	42	-22	52	-36	-23	64	.00	0.212	0.294	0.235	0.413
Precentral Gyrus	Precuneus	R	L	4	8	57	-9	29	-6	-34	64	.00	0.211	-0.073	-0.171	0.032
Postcentral Gyrus	SFG	R	L	2	7	42	-22	52	-16	-18	68	.00	0.21	0.338	0.52	0.591
Precentral Gyrus	Postcentral Gyrus	R	L	6	1	49	-3	49	-36	-23	64	.00	0.204	0.161	-0.004	0.379
Precentral Gyrus	Insula	R	L	4	6	57	-9	29	-45	-1	49	.00	0.204	-0.049	-0.276	-0.161
Postcentral Gyrus	Postcentral Gyrus	R	L	40	1	53	-27	41	-24	-32	61	.00	0.204	0.198	0.188	0.552
Precentral Gyrus	Postcentral Gyrus	R	L	6	1	49	-3	49	-24	-32	61	.00	0.201	0.108	0.012	0.407
MFG	Postcentral Gyrus	R	L	6	1	27	-11	65	-24	-32	61	.00	0.2	0.293	0.286	0.391
Postcentral Gyrus	SPL	R	L	2	1	42	-22	52	-51	-25	40	.00	0.198	0.084	-0.027	0.12
Precentral Gyrus	SMA	R	R	4	6	57	-9	29	6	-22	63	.00	0.198	-0.043	-0.117	0.013
MFG	Postcentral Gyrus	R	L	6	1	27	-11	65	-36	-23	64	.00	0.197	0.354	0.381	0.409
MFG	Postcentral Gyrus	R	L	6	4	27	-11	65	-41	-16	45	.00	0.196	0.281	0.228	0.151
Postcentral Gyrus	Precuneus	R	L	2	8	42	-22	52	-6	-34	64	.00	0.195	0.407	0.516	0.718
Precentral Gyrus	Postcentral Gyrus	R	R	4	2	57	-9	29	42	-22	52	.00	0.195	0.022	-0.346	-0.135
MFG	IPL	R	L	6	7	27	-11	65	-25	-55	59	.00	0.193	0.224	0.329	0.44
Precentral Gyrus	Postcentral Gyrus	R	L	4	4	57	-9	29	-41	-16	45	.00	0.192	-0.14	-0.453	-0.113
IPL	Postcentral Gyrus	R	L	2	1	33	-39	48	-24	-32	61	.00	0.189	0.309	0.389	0.466
Postcentral Gyrus	SFG	R	L	40	7	53	-27	41	-16	-18	68	.00	0.187	0.245	0.375	0.493
MFG	SPL	R	L	6	1	27	-11	65	-51	-25	40	.00	0.187	0.141	0.175	0.245
Precentral Gyrus	Insula	R	L	4	7	57	-9	29	-23	12	54	.00	0.184	0.27	0.155	-0.011
Postcentral Gyrus	Postcentral Gyrus	R	L	40	4	53	-27	41	-41	-16	45	.00	0.183	0.093	-0.174	-0.215
Postcentral Gyrus	Precuneus	R	L	40	8	53	-27	41	-6	-34	64	.00	0.182	0.347	0.428	0.722

51 Abbreviations: L=Left, R=Right, SMA= Supplementary Motor Area, DLPFC=dorsolateral prefrontal cortex, MTG=Middle Temporal Gyrus, IPL=Inferior Parietal
52 Lobule, SFG=Superior Frontal Gyrus, MFG=Middle Frontal Gyrus, SPL=Superior Parietal Lobule.



455 *Figure 2. (A)* BrainNet was used to visualize network connectivity [60], based on specific guidelines [see 61],
 456 whereby nodes are grouped into localized regions. Good sustained attention denotes all connections between ROIs
 457 that negatively correlated with IRV (blue); poor sustained attention denotes all connections between ROIs that
 458 positively correlated with IRV (orange) for the normative sample. **(B)** Circle plots were generated using a custom-
 459 written Matlab function (based on <http://www.mathworks.com/matlabcentral/fileexchange/48576-circulargraph>)
 460 to visualize good sustained attention (blue) and poor sustained attention (red) for the normative sample. The plots
 461 are arranged in two half circles reflecting left and right hemisphere brain anatomy from anterior (top of the circle)
 462 to posterior (bottom of the circle). Nodes are color-coded according to the cortical lobes [61]. **(C)** The top 100
 463 nodes and 10 nodes denoting good sustained attention (i.e. connections between ROIs that negatively correlated
 464 with IRV, where $p < .001$). **(D)** The top 100 nodes and 10 nodes denoting poor sustained attention (i.e. connections
 465 between ROIs that positively correlated with IRV where $p < .001$). Nodes were color-coded according to network
 466 as identified in [60].

467

468

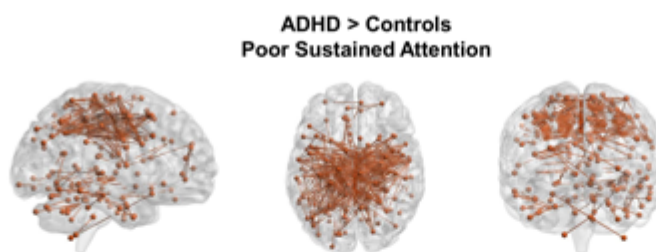
469

470

471

472 *Figure 3. With respect to ROI connections associated with high IRV (i.e., poor sustained attention), the ADHD*
 473 *symptom exhibited significantly stronger connectivity between ROIs, compared to controls.*

474



475

476 **DISCUSSION**

477 To our knowledge, the current research is the first population-based functional imaging study to examine
478 IRV with respect to both average fMRI activity and functional connectivity in a large cohort of adolescents, and
479 in relation to ADHD symptomology. Average fMRI activation results indicated that good sustained attention (i.e.,
480 low IRV) was associated with increased bilateral activation in insula, ACC and prefrontal regions, while poor
481 sustained attention (i.e., high IRV) was associated with increased bilateral activation in PCC, thalamus occipital
482 and motor regions. The functional connectivity results indicated that good sustained attention was characterized
483 by stronger negative connectivity (i.e., greater segregation) between cerebellum and motor networks, while
484 stronger positive connectivity within the motor network was a signature of poorer sustained attention. Following
485 this, we compared these sustained attention brain patterns in a separate sample of adolescents with ADHD
486 symptoms to matched asymptomatic controls. Relative to controls, adolescents with ADHD symptoms had
487 significantly higher IRV, increased Stop activation in postcentral gyrus, and stronger positive connectivity within
488 low sustained attention networks associated with high IRV, as well as stronger positive connectivity within good
489 sustained attention networks associated with low IRV. However, there were no significant differences between the
490 groups for anti-correlated connections in networks associated with either high or low IRV.

491 For average fMRI activation, low IRV was associated with activation in right MFG and bilateral insula
492 during Stop Success trials, and right ACC and insula bilaterally during Stop Fail trials. The ACC and insula cortices
493 are part of the *salience network*, thought to be responsible for detecting behaviorally relevant cues and engaging
494 executive processes [62,63,64,65]. With respect to the functional connectivity signature of low IRV, our findings
495 highlight the importance of cerebellar network segregation in the brain. The top 10 nodes negatively correlated
496 with IRV were all negative (left) cerebellar connections: with parietal lobe (right postcentral gyrus) and frontal
497 areas (right SMA and dorsolateral prefrontal cortex; DLPFC), a finding that bears similarity in the adult
498 connectivity literature [32]. The prominent task-active frontoparietal network, incorporating DLPFC, intraparietal
499 sulcus and SMA, typically becomes more activated during attention-demanding tasks than during rest [66], and is
500 associated with alertness, response preparation and selective attention [11,67]. Prefrontal and parietal cortices have
501 been implicated in numerous tasks of sustained attention [68,69] and these findings lend support to previous
502 structural findings, which linked prefrontal anomalies to increased IRV [38].

503 The cerebellum is thought to have a critical role in sustained attention [70,71,72]. In healthy adults, recent
504 work has shown that enhancing cerebellar functional connectivity via transcranial magnetic stimulation can
505 decrease IRV [73]. Distinct subregions of the cerebellum have been identified as being coupled with specific
506 cerebral networks [74,75]. For example, positive connectivity between right hemispheric cerebellar lobules
507 VIIb/VIIIa with DAN were robustly recruited in a series of resting-state and working memory/sustained attention
508 tasks [74]. In a large healthy sample (N=1000), intrinsic functional connectivity patterns were observed between
509 lateral cerebellar areas of crus I/II with DMN, as well as between anterior Crus I with DLPFC, IPL, a pre-SMA

510 midline border and ACC [75]. The finding indicates that Crus I/II are major cerebellar components of the DMN
511 [75]. One study investigated functional connectivity of this DMN cerebellar component in healthy adults and
512 adults with ADHD, finding that in the healthy sample, less anticorrelations between Crus I/II and DAN regions
513 was associated with greater inattention (high IRV). Adding to this work, we evidence that anti-correlations between
514 left-lateralized Crus I/II with right-lateralized frontoparietal regions predominantly characterize good sustained
515 attention in our normative sample [76].

516 For average fMRI activation, high IRV was associated with activation in precentral and postcentral gyri
517 bilaterally across all trials and in left SMA during Stop Success trials, a region responsible for successful stopping,
518 monitoring and resolving task conflict [77]. High IRV was also associated with DMN, including Go-related
519 activation in right precuneus and Stop-Success activation in precuneus bilaterally. DMN activation is thought to
520 infringe upon neuronal circuits underlying task performance, and given that DMN deactivation is typically
521 required for efficient sustained attentional processes [30,78], this positive IRV-DMN is unsurprising. However,
522 DMN connectivity increases with maturation into young adulthood [79,80], suggesting that functional connectivity
523 analyses may shed new light on such neural processes. With respect to the functional connectivity signature of
524 high IRV, our findings evidence robust positive bilateral connections within the motor network, and between motor
525 with parietal and limbic networks. The top 10 nodes correlated with IRV were all positive interhemispheric
526 connections within the motor network, characterizing poor sustained attention. The observed bilateral pattern of
527 motor activation likely reflecting the task format, which required both left- and right-hand responses. Unlike
528 Rosenberg and colleagues [32], who found that poorer sustained attention in adults was related to connections
529 between temporal and parietal networks and within the cerebellum, the observed positive motor-motor coupling
530 may reflect a snapshot of neural development in early adolescence. For example, age-related decreases in motor
531 connectivity have been observed in a large sample of healthy children and young adults [81]. Our findings lend
532 support for a more predominant functional segregation of neural networks in childhood and greater functional
533 integration later on in adulthood [66].

534 Numerous studies have demonstrated behavioral and neural deficits in sustained attentional processes in
535 ADHD [82]. Behaviorally, our results show that adolescents with ADHD symptoms have significantly increased
536 IRV relative to controls, as previously demonstrated [38,46]. Consistent with this behavioral difference, the ADHD
537 symptom group had significantly increased activation in the left postcentral gyrus during Stop Fail and Stop
538 Success trials, compared to controls. This is similar to findings in 8-13 year-old children, whereby 25 children
539 with ADHD had greater IRV-related activation in left postcentral and right precentral gyri and IPL during Go trials
540 on a Go/No-go task, as well as in prefrontal and parietal regions during No-go trials, compared to 25 controls [83].
541 Similar patterns of motor connectivity dysfunction have also been shown in resting-state studies of children [84]
542 and young adults with ADHD [85]. Here, we found that, relative to asymptomatic controls, the ADHD symptom
543 group had stronger positive connectivity within primarily motor networks whose connectivity was positively
544 associated with ICV (i.e., poor sustained attention) in the normative group. The reason for the divergent results
545 (weaker vs. stronger connectivity in motor networks in ADHD) likely reflects the fact that we measured functional

546 connectivity during task performance, rather than at rest. Stronger task activation and stronger task-based
547 functional connectivity may be necessary in the context of weaker baseline functional connectivity within motor
548 networks, a hypothesis that could be tested by collecting both resting state and task data from a sample of
549 adolescents with ADHD. Overall, our findings add to the growing body of literature linking dysfunctional
550 premotor/motor systems to poorer behavioral control in ADHD [83]. Adolescents with ADHD [86] and subclinical
551 attention deficits [87,88] also display delays in cortical maturation, and as such, it is possible that any localized
552 motor connectivity associated with IRV exhibited by the individuals within our samples will subside as more
553 global, specialized brain networks develop.

554 At the other end of the spectrum of brain-behavior relationships with IRV, average fMRI activation
555 revealed no differences for brain regions associated with low IRV between the ADHD symptom and control group.
556 With respect to the functional connectivity signature of low IRV, no group differences were observed for functional
557 connections associated with low IRV (i.e., good sustained attention). Studies have previously demonstrated that
558 brain-behavior relationships can be modified in the presence of categorical diagnoses such as ADHD, and that not
559 all diagnostic effects can be simplistically understood as dimensional (i.e., a continuum of too much or too little
560 functional connectivity)[89,90]. Our result may reflect a similarly complex interaction between the dimensional
561 brain-behavior relationships associated with ADHD symptoms and IRV.

562 Data-driven analyses are commonly applied to resting-state data, whereas directional analyses (i.e.,
563 focusing on particular seed regions) are usually used in task-based studies [91]. Our findings solidify the
564 importance of data-driven functional connectivity analyses, rather than constraining ROIs a priori [92] in order to
565 better characterize cognitive processes. Although the brain-behavioral findings for sustained attention are reliable,
566 there are some caveats to this study. The relationship between IRV and age may be a sensitive marker of neural
567 development [93] and considering the major brain changes that occur in adolescence [94], it is unclear if the
568 observed functional trends reflect some sort of developmental delay or if they will persist as these adolescents
569 develop. Secondly, although ADHD symptomatology revealed attentional anomalies in behavior and brain, our
570 subclinical sample-size was small, and further investigations of ADHD symptomatology using larger datasets will
571 be required. Thirdly, the ability to rigorously measure fluctuations in temporal resolution, combined with the
572 corresponding physiological responses (head motion, respiration) remains a challenge [95,96]. The influence of
573 head motion on functional connectivity for example is a well-documented issue, and is particularly troublesome
574 for ADHD-related analyses. Prominent global artifacts tend to be present in scans and current methods do not
575 adequately target these artifacts for removal [**Error! Bookmark not defined.,Error! Bookmark not defined.**].
576 Broadly speaking, nuisance regression is the dominant approach for removing signal confounds, although it
577 increases the risk of reducing signals of interest [97]. Scrubbing procedures can alter the temporal structure of
578 timeseries data [54], therefore it was not implemented in this case. Some previous work indicates functional
579 connectivity patterns remain largely unchanged after scrubbing, and that including mean framewise displacement
580 as a group-level covariate yields similar results to scrubbing [54,98,99]. The issue of head motion was at least
581 partially addressed here by considering motion parameters as covariates in the statistical analysis [54]. Global

582 signal regression was also used in the current analyses, given that several reports have indicated its merits in
583 robustly handling in-scanner movement [see 100, 101,102]. Nevertheless, we found head motion (i.e., mean
584 framewise displacement) significantly correlated with IRV in the large normative sample (n=758; $r = .22$), but not
585 in the smaller ADHD symptom and control samples (each n=30) similar to previous research [32]. This further
586 highlights the importance of large sample sizes in order to control for spurious effects on functional connectivity
587 data.

588

589 ***Conclusion***

590 The current findings serve to advance our understanding of the brain networks associated with sustained
591 attentional processes. Functional connectivity between a global array of networks, including the cerebellum, and
592 motor, prefrontal and occipital cortices serve as a robust indicator for sustained attention. In particular, specific
593 subregions of the cerebellum Crus I/II are robustly linked to sustained attention, while the involvement of motor
594 connectivity in both low and high attention networks highlights its significant role in adolescent attention and
595 cognition. In addition, the current research suggests that fMRI activation and functional connectivity within the
596 motor network in the absence of higher order cognitive networks, may constitute a novel indicator of low sustained
597 attention. The findings provide a solid basis for further research of cerebellar connectivity with motor networks in
598 sustained attention. One future direction will also be to examine the extent to which these networks will predict
599 subsequent inattention trajectories into adulthood.

600

601 Supplemental Information

602

603 Controlling for Motion Artifacts

604 Ideally, motion correction should eliminate any statistical relationship between functional connectivity
605 and in-scanner motion artifacts, although a trade-off inevitably arises among the possible methods for
606 motion regression [¹⁰³,¹⁰⁴] (note that the examination of motion confounds have generally been carried
607 out using resting-state data). Therefore, we conducted additional analyses to demonstrate that the FC-
608 IRV relationships hold, regardless of head motion. We used the summary statistic of mean framewise
609 displacement (mFWD [¹⁰⁵]) to quantify the degree of head motion for each subject.

610

611 Motion Analysis 1. Progressive elimination of higher motion subjects from the normative sample. We
612 separated the normative sample into groups according to the amount of motion: (mFWD <0.2 mm, n=457;
613 <0.3 mm, n=621; <0.4 mm, n=692; <0.5 mm, n=726) and a group consisting only of subjects with higher
614 motion (i.e., all participants with mFWD>0.2 mm, n=301). Separately for each group, timeseries data
615 were extracted and a Pearson's correlation score was calculated among the 268 ROIs. This yielded a
616 connectivity matrix (268 × 268) with 35,778 unique connections between ROIs for each group. We then
617 correlated these connections with individual IRV scores within each group. Although each group
618 contained different numbers of participants, for consistency a significance threshold of $p < 0.001$ was
619 applied to each set of results. Due to the computational expense, we did not run the permutation analysis,
620 but simply applied the significance threshold ($p < 0.001$) to the FC-IRV matrices for each motion group.
621 Figure 1 displays these results, with additional information in Table 1. Note the high motion subgroup
622 was relatively underpowered to detect FC-IRV effects at $p < .001$ (Figure 1, Panel I) and therefore we
623 include a figure with $p < .005$ threshold to this group's FC-IRV to better show the strongest FC-IRV
624 connections (Figure 1, Panel J).

625

626 Motion Analysis 2. Examination of subgroup without mFWD-IRV correlation. Head motion and IRV were
627 correlated in the normative sample (Spearman's $Rho = .22$). Therefore, in order to examine if the FC-
628 IRV relationship resulted from the mFWD-IRV relationship, we examined a subset of subjects (n=360)
629 excluding particularly high-motion/high-IRV subjects with no correlation between mFWD and IRV
630 (Spearman's $Rho = .09$, $p > .05$; mFWD <.17; IRV <.3). Similar to Motion Analysis 1, we recalculated the
631 ROI connectivity matrix and then correlated this matrix with IRV (Figure 1, Panel F). Note that the
632 sample size is smaller and, by examining only a subset of values within a particular range, the correlations
633 will be inherently weaker (i.e., due to range restriction; see additional information in Table 1). As a result,

634 we also include a figure with $p < .005$ threshold to this group's FC-IRV (Figure 1, Panel G).

635

636

637

638

639

640

641

642

643

644

645

646

647

648

649

650

651

652

653

654

655

656 *Figure 1. Examination of distributions of FC-IRV correlations for various motion-determined subgroups.*

657 Good sustained attention (i.e. functional connections positively correlated with IRV) is denoted by the

658 color red (top images); poor sustained attention (i.e. functional connections negatively correlated with

659 IRV) is denoted by the color blue (bottom images).

660

661 *Motion Analysis 3. Network overlap between motion groups:* It is important to demonstrate that the most

662 important connections within the normative sample are preserved, regardless of the motion

663 characteristics of the subjects. We identified the top 100 FC-IRV connections (absolute r values) from

664 the normative sample, and extracted and computed the same connections for a low motion group

665 $mFWD < .2$), a higher motion group ($mFWD > .2$), and the $mFWD$ -IRV uncorrelated group (see Table 1

666 below). These FC-IRV connections remained significant within each group, with similar absolute r

667 values and broadly similar p values (note that sample sizes were different across groups).

668

669

670 Table 1. r values of the top 100 FC-IRV connections identified from the normative sample. That is, the
 671 mean r values for the Low Motion, High Motion and Uncorrelated Groups were calculated based on
 672 connections identified in the normative sample.

	Normative Group (N=758)	Low Motion Group (N=457)	High Motion Group (N=301)	Uncorrelated Group (N=360)
Mean FC-IRV absolute r	0.187	0.181	0.156	0.150
Standard error of mean absolute r	0.002	0.004	0.003	0.004
<i>Mean p</i>	<0.001	<0.001	0.022	<0.001

673

674

675 In summary, we show here that the most important FC-IRV connections are present in various subsamples
 676 of the data, regardless of head motion.

677

678

679

References

-
- 1 Hulstsch, D.F., MacDonald, S.W. and Dixon, R.A., 2002. Variability in reaction time performance of younger and older adults. *The Journals of Gerontology Series B: Psychological Sciences and Social Sciences*, 57(2), pp.P101-P115.
 - 2 Haynes, B.I., Bauermeister, S. and Bunce, D., 2017. A Systematic Review of Longitudinal Associations Between Reaction Time Intraindividual Variability and Age-Related Cognitive Decline or Impairment, Dementia, and Mortality. *Journal of the International Neuropsychological Society*, 23(5), pp.431-445.
 - 3 Balota, D.A., Tse, C.S., Hutchison, K.A., Spieler, D.H., Duchek, J.M. and Morris, J.C., 2010. Predicting conversion to dementia of the Alzheimer's type in a healthy control sample: The power of errors in stroop color naming. *Psychology and aging*, 25(1), p.208. doi: 10.1037/a0017474
 - 4 Cherbuin, N., Sachdev, P. and Anstey, K.J., 2010. Neuropsychological predictors of transition from healthy cognitive aging to mild cognitive impairment: the PATH Through Life Study. *The American Journal of Geriatric Psychiatry*, 18(8), pp.723-733. doi: 10.1097/Jgp.0b013e3181cdecf1
 - 5 Dixon, R.A., Garrett, D.D., Lentz, T.L., MacDonald, S.W., Strauss, E. and Hulstsch, D.F., 2007. Neurocognitive markers of cognitive impairment: exploring the roles of speed and inconsistency. *Neuropsychology*, 21(3), p.381. doi: 10.1037/0894-4105.21.3.381
 - 6 Klein, C., Wendling, K., Huettner, P., Ruder, H. and Peper, M., 2006. Intra-subject variability in attention-deficit hyperactivity disorder. *Biological psychiatry*, 60(10), pp.1088-1097.
 - 7 Leth-Steensen, C., Elbaz, Z.K. and Douglas, V.I., 2000. Mean response times, variability, and skew in the responding of ADHD children: a response time distributional approach. *Acta psychologica*, 104(2), pp.167-190.
 - 8 Russell, V.A., Oades, R.D., Tannock, R., Killeen, P.R., Auerbach, J.G., Johansen, E.B. and Sagvolden, T., 2006. Response variability in attention-deficit/hyperactivity disorder: a neuronal and glial energetics hypothesis. *Behavioral and Brain Functions*, 2(1), p.30. DOI: 10.1186/1744-9081-2-30
 - 9 Tamm, L., Narad, M.E., Antonini, T.N., O'Brien, K.M., Hawk, L.W. and Epstein, J.N., 2012. Reaction time variability in ADHD: a review. *Neurotherapeutics*, 9(3), pp.500-508.
 - 10 Barkley, R.A., 1997. Behavioral inhibition, sustained attention, and executive functions: constructing a unifying theory of ADHD. *Psychological bulletin*, 121(1), p.65
 - 11 Sonuga-Barke, E.J. and Castellanos, F.X., 2007. Spontaneous attentional fluctuations in impaired states and pathological conditions: a neurobiological hypothesis. *Neuroscience & Biobehavioral Reviews*, 31(7), pp.977-986.
 - 12 Kuntsi, J. and Klein, C., 2011. Intraindividual variability in ADHD and its implications for research of causal links. In *Behavioral neuroscience of attention deficit hyperactivity disorder and its treatment* (pp. 67-91). Springer Berlin Heidelberg.
 - 13 Castellanos, F.X., Sonuga-Barke, E.J., Milham, M.P. and Tannock, R., 2006. Characterizing cognition in ADHD: beyond executive dysfunction. *Trends in cognitive sciences*, 10(3), pp.117-

-
- 123.<http://dx.doi.org/10.1016/j.tics.2006.01.011>.
- 14 Mullins, C., Bellgrove, M.A., Gill, M. and Robertson, I.H., 2005. Variability in time reproduction: difference in ADHD combined and inattentive subtypes. *Journal of the American Academy of Child & Adolescent Psychiatry*, 44(2), pp.169-176.<http://dx.doi.org/10.1097/00004583-200502000-00009>.
- 15 Kofler, M.J., Rapport, M.D., Sarver, D.E., Raiker, J.S., Orban, S.A., Friedman, L.M. and Kolomeyer, E.G., 2013. Reaction time variability in ADHD: a meta-analytic review of 319 studies. *Clinical psychology review*, 33(6), pp.795-811. <http://doi.org/10.1016/j.cpr.2013.06.001>
- 16 Vaurio, R.G., Simmonds, D.J. and Mostofsky, S.H., 2009. Increased intra-individual reaction time variability in attention-deficit/hyperactivity disorder across response inhibition tasks with different cognitive demands. *Neuropsychologia*, 47(12), pp.2389-2396.
- 17 Castellanos, F.X., Sonuga-Barke, E.J., Scheres, A., Di Martino, A., Hyde, C. and Walters, J.R., 2005. Varieties of attention-deficit/hyperactivity disorder-related intra-individual variability. *Biological psychiatry*, 57(11), pp.1416-1423. <http://doi.org/10.1016/j.biopsych.2004.12.005>
- 18 Bellgrove, M.A., Hawi, Z., Kirley, A., Gill, M. and Robertson, I.H., 2005. Dissecting the attention deficit hyperactivity disorder (ADHD) phenotype: sustained attention, response variability and spatial attentional asymmetries in relation to dopamine transporter (DAT1) genotype. *Neuropsychologia*, 43(13), pp.1847-1857.
- 19 Bellgrove, M.A., Hester, R. and Garavan, H., 2004. The functional neuroanatomical correlates of response variability: evidence from a response inhibition task. *Neuropsychologia*, 42(14), pp.1910-1916.
- 20 Johnson, B.P., Pinar, A., Fornito, A., Nandam, L.S., Hester, R. and Bellgrove, M.A., 2015. Left anterior cingulate activity predicts intra-individual reaction time variability in healthy adults. *Neuropsychologia*, 72, pp.22-26. <http://doi.org/10.1016/j.neuropsychologia.2015.03.015>
- 21 Esterman, M., Noonan, S.K., Rosenberg, M. and DeGutis, J., 2012. In the zone or zoning out? Tracking behavioral and neural fluctuations during sustained attention. *Cerebral Cortex*, p.bhs261.
- 22 Simmonds, D.J., Fotedar, S.G., Suskauer, S.J., Pekar, J.J., Denckla, M.B. and Mostofsky, S.H., 2007. Functional brain correlates of response time variability in children. *Neuropsychologia*, 45(9), pp.2147-2157. <http://doi.org/10.1016/j.neuropsychologia.2007.01.013>
- 23 Fortenbaugh, F.C., DeGutis, J. and Esterman, M., 2017. Recent theoretical, neural, and clinical advances in sustained attention research. *Annals of the New York Academy of Sciences*.
- 24 Castellanos, F.X., Kelly, C. and Milham, M.P., 2009. The Restless Brain: Attention-Deficit Hyperactivity Disorder, Resting—State Functional Connectivity, and Intrasubject Variability. *The Canadian Journal of Psychiatry*, 54(10), pp.665-672.
- 25 Kessler, D., Angstadt, M. and Sripada, C., 2016. Growth charting of brain connectivity networks and the identification of attention impairment in youth. *JAMA psychiatry*, 73(5), pp.481-489.[doi:10.1001/jamapsychiatry.2016.0088](https://doi.org/10.1001/jamapsychiatry.2016.0088), [pmid:27076193](https://pubmed.ncbi.nlm.nih.gov/27076193/).
- 26 Rosenberg, M.D., Finn, E.S., Scheinost, D., Constable, R.T. and Chun, M.M., 2017. Characterizing Attention

-
- with Predictive Network Models. *Trends in Cognitive Sciences*. <http://doi.org/10.1016/j.tics.2017.01.011>
- 27 Chun, M.M., Golomb, J.D. and Turk-Browne, N.B., 2011. A taxonomy of external and internal attention. *Annual review of psychology*, 62, pp.73-101.
- 28 Petersen, S.E. and Posner, M.I., 2012. The attention system of the human brain: 20 years after. *Annual review of neuroscience*, 35, pp.73-89.
- 29 Szczepanski, S.M., Konen, C.S. and Kastner, S., 2010. Mechanisms of spatial attention control in frontal and parietal cortex. *Journal of Neuroscience*, 30(1), pp.148-160.
- 30 Kelly, A. C., Uddin, L. Q., Biswal, B. B., Castellanos, F. X., & Milham, M. P. (2008). Competition between functional brain networks mediates behavioral variability. *Neuroimage*, 39(1), 527-537.
- 31 Glickstein, M., 2007. What does the cerebellum really do?. *Current Biology*, 17(19), pp.R824-R827.
- 32 Rosenberg, M.D., Finn, E.S., Scheinost, D., Papademetris, X., Shen, X., Constable, R.T. and Chun, M.M., 2015. A neuromarker of sustained attention from whole-brain functional connectivity. *Nature neuroscience*.
- 33 Castellanos, F.X., Margulies, D.S., Kelly, C., Uddin, L.Q., Ghaffari, M., Kirsch, A., Shaw, D., Shehzad, Z., Di Martino, A., Biswal, B. and Sonuga-Barke, E.J., Rotrosen, J., Adlenc, L., and Milham, M.2008. Cingulate-precuneus interactions: a new locus of dysfunction in adult attention-deficit/hyperactivity disorder. *Biological psychiatry*, 63(3), pp.332-337. <http://doi.org/10.1016/j.biopsych.2007.06.025>
- 34 Barber, A.D., Jacobson, L.A., Wexler, J.L., Nebel, M.B., Caffo, B.S., Pekar, J.J. and Mostofsky, S.H., 2015. Connectivity supporting attention in children with attention deficit hyperactivity disorder. *Neuroimage: clinical*, 7, pp.68-81.
- 35 Castellanos, F.X. and Aoki, Y., 2016. Intrinsic functional connectivity in attention-deficit/hyperactivity disorder: a science in development. *Biological psychiatry: cognitive neuroscience and neuroimaging*, 1(3), pp.253-261.
- 36 Hudziak, J.J., Achenbach, T.M., Althoff, R.R. and Pine, D.S., 2007. A dimensional approach to developmental psychopathology. *International journal of methods in psychiatric research*, 16(S1).
- 37 O'Halloran, L., Nymberg, C., Jollans, L., Garavan, H. and Whelan, R., 2017. The potential of neuroimaging for identifying predictors of adolescent alcohol use initiation and misuse. *Addiction*, 112(4), pp.719-726.
- 38 Albaugh, M. D., Orr, C., Chaarani, B., Althoff, R. R., Allgaier, N., D'Alberto, Hudson, K., Mackey, S., Spechler, P., Banaschewski, T., Brühl, R., Bokde, A., Bromberg, U., Büchel, C., Cattrell, A., Conrod, P., Desrivieres, S., Flor, H., Frouin, V., Gallinat, J., Goodman, R., Gowland, P., Grimmer, Y., Heinz, A., Kappel, V., Martinot, J., Martinot, M., Nees, F., Orfanos, D., Penttilä, J., Poustka, L., Paus, T., Smolka, M., Struve, M., Walter, H., Whelan, R., Schumann, G., Garavan, H., and Potter, A. 2017 Inattention and Reaction Time Variability Are Linked to Ventromedial Prefrontal Volume in Adolescents, *Biological Psychiatry*. <http://doi.org/10.1016/j.biopsych.2017.01.003>
- 39 Shen, X., Tokoglu, F., Papademetris, X. and Constable, R.T., 2013. Groupwise whole-brain parcellation from resting-state fMRI data for network node identification. *Neuroimage*, 82, pp.403-415.

-
- 40 Schumann, G., Loth, E., Banaschewski, T., Barbot, A., Barker, G., Büchel, C., Conrod, P.J., Dalley, J.W., Flor, H., Gallinat, J. and Garavan, H., Heinz, A., Itterman, B., Lathrop, M., Mallik, C., Mann, K., Martinot, J., Paus, T., Poline, J-B., Robbins, T W., Rietschel, M., Reed, L., Smolka, M., Spanagel, R., Speiser, C., Stephens, D N., Strohle, A. and Struve, M. 2010. The IMAGEN study: reinforcement-related behaviour in normal brain function and psychopathology. *Molecular psychiatry*, 15(12), pp.1128-1139. <http://dx.doi.org/10.1038/mp.2010.4>
- 41 Goodman, R., Ford, T., Richards, H., Gatward, R. and Meltzer, H., 2000. The development and well-being assessment: description and initial validation of an integrated assessment of child and adolescent psychopathology. *Journal of child psychology and psychiatry*, 41(5), pp.645-655.
- 42 Langley, K., Heron, J., Smith, G.D. and Thapar, A., 2012. Maternal and paternal smoking during pregnancy and risk of ADHD symptoms in offspring: testing for intrauterine effects. *American journal of epidemiology*, 176(3), pp.261-268.
- 43 Salum, G.A., Sonuga-Barke, E., Sergeant, J., Vandekerckhove, J., Gadelha, A., Moriyama, T.S., Graeff-Martins, A.S., Manfro, G.G., Polanczyk, G. and Rohde, L.A.P., 2014. Mechanisms underpinning inattention and hyperactivity: neurocognitive support for ADHD dimensionality. *Psychological medicine*, 44(15), pp.3189-3201. <https://doi.org/10.1017/S0033291714000919>
- 44 Wechsler, D. 2003. Wechsler Intelligence Scale for Children—Fourth Edition (WISC–IV) technical and interpretive manual. San Antonio, TX: Psychological Corporation.
- 45 Petersen, A.C., Crockett, L., Richards, M. and Boxer, A., 1988. A self-report measure of pubertal status: Reliability, validity, and initial norms. *Journal of Youth and Adolescence*, 17(2), pp.117-133.[doi:10.1007/BF01537962](https://doi.org/10.1007/BF01537962)
- 46 Rubia, K., Noorloos, J., Smith, A., Gunning, B. and Sergeant, J., 2003. Motor timing deficits in community and clinical boys with hyperactive behavior: the effect of methylphenidate on motor timing. *Journal of abnormal child psychology*, 31(3), pp.301-313.
- 47 Rubia, K., Smith, A.B., Taylor, E. and Brammer, M., 2007. Linear age-correlated functional development of right inferior fronto-striato-cerebellar networks during response inhibition and anterior cingulate during error-related processes. *Human brain mapping*, 28(11), pp.1163-1177
- 48 Dale, A.M., 1999. Optimal experimental design for event-related fMRI. *Human brain mapping*, 8(2-3), pp.109-114.
- 49 Eklund, A., Nichols, T.E. and Knutsson, H., 2016. Cluster failure: why fMRI inferences for spatial extent have inflated false-positive rates. *Proceedings of the National Academy of Sciences*, p.201602413.
- 50 Woo, C.W., Krishnan, A. and Wager, T.D., 2014. Cluster-extent based thresholding in fMRI analyses: pitfalls and recommendations. *Neuroimage*, 91, pp.412-419.
- 51 Fair, D.A., Schlaggar, B.L., Cohen, A.L., Miezin, F.M., Dosenbach, N.U., Wenger, K.K., Fox, M.D., Snyder, A.Z., Raichle, M.E. and Petersen, S.E., 2007. A method for using blocked and event-related fMRI data to study “resting state” functional connectivity. *Neuroimage*, 35(1), pp.396-405.

-
- 52 Power, J.D., Mitra, A., Laumann, T.O., Snyder, A.Z., Schlaggar, B.L. and Petersen, S.E., 2014. Methods to detect, characterize, and remove motion artifact in resting state fMRI. *Neuroimage*, 84, pp.320-341.
- 53 Fox, M.D., Zhang, D., Snyder, A.Z. and Raichle, M.E., 2009. The global signal and observed anticorrelated resting state brain networks. *Journal of neurophysiology*, 101(6), pp.3270-3283.
- 54 Yan, C.G., Cheung, B., Kelly, C., Colcombe, S., Craddock, R.C., Di Martino, A., Li, Q., Zuo, X.N., Castellanos, F.X. and Milham, M.P., 2013. A comprehensive assessment of regional variation in the impact of head micromovements on functional connectomics. *Neuroimage*, 76, pp.183-201.
- 55 Saad, Z.S., Gotts, S.J., Murphy, K., Chen, G., Jo, H.J., Martin, A. and Cox, R.W., 2012. Trouble at rest: how correlation patterns and group differences become distorted after global signal regression. *Brain connectivity*, 2(1), pp.25-32.
- 56 Power, J.D., Plitt, M., Laumann, T.O. and Martin, A., 2017. Sources and implications of whole-brain fMRI signals in humans. *Neuroimage*, 146, pp.609-625.
- 57 Garrison, K.A., Scheinost, D., Finn, E.S., Shen, X. and Constable, R.T., 2015. The (in) stability of functional brain network measures across thresholds. *Neuroimage*, 118, pp.651-661.
- 58 Scheinost, D., Benjamin, J., Lacadie, C.M., Vohr, B., Schneider, K.C., Ment, L.R., Papademetris, X. and Constable, R.T., 2012. The intrinsic connectivity distribution: a novel contrast measure reflecting voxel level functional connectivity. *Neuroimage*, 62(3), pp.1510-1519.
- 59 Böttger, J., Schäfer, A., Lohmann, G., Villringer, A. and Margulies, D.S., 2014. Three-dimensional mean-shift edge bundling for the visualization of functional connectivity in the brain. *IEEE transactions on visualization and computer graphics*, 20(3), pp.471-480.
- 60 Xia, M., Wang, J. and He, Y., 2013. BrainNet Viewer: a network visualization tool for human brain connectomics. *PloS one*, 8(7), p.e68910.
- 61 Shen, X., Finn, E.S., Scheinost, D., Rosenberg, M.D., Chun, M.M., Papademetris, X. and Constable, R.T., 2017. Using connectome-based predictive modeling to predict individual behavior from brain connectivity. *nature protocols*, 12(3), pp.506-518.
- 62 Namkung, H., Kim, S.H. and Sawa, A., 2017. The Insula: An Underestimated Brain Area in Clinical Neuroscience, Psychiatry, and Neurology. *Trends in Neurosciences*.
- 63 Cai, W., Ryali, S., Chen, T., Li, C.S.R. and Menon, V., 2014. Dissociable roles of right inferior frontal cortex and anterior insula in inhibitory control: evidence from intrinsic and task-related functional parcellation, connectivity, and response profile analyses across multiple datasets. *Journal of Neuroscience*, 34(44), pp.14652-14667.
- 64 Seeley, W.W., Menon, V., Schatzberg, A.F., Keller, J., Glover, G.H., Kenna, H., Reiss, A.L. and Greicius, M.D., 2007. Dissociable intrinsic connectivity networks for salience processing and executive control. *Journal of Neuroscience*, 27(9), pp.2349-2356.
- 65 Wager, T.D. and Barrett, L.F., 2017. From affect to control: Functional specialization of the insula in motivation and regulation. *bioRxiv*, p.102368.

-
- 66 Konrad, K. and Eickhoff, S.B., 2010. Is the ADHD brain wired differently? A review on structural and functional connectivity in attention deficit hyperactivity disorder. *Human brain mapping*, 31(6), pp.904-916.
- 67 Fox, M.D., Snyder, A.Z., Vincent, J.L., Corbetta, M., Van Essen, D.C. and Raichle, M.E., 2005. The human brain is intrinsically organized into dynamic, anticorrelated functional networks. *Proceedings of the National Academy of Sciences of the United States of America*, 102(27), pp.9673-9678.
- 68 Langner, R. and Eickhoff, S.B., 2013. Sustaining attention to simple tasks: A meta-analytic review of the neural mechanisms of vigilant attention.
- 69 Corbetta, M. and Shulman, G.L., 2002. Control of goal-directed and stimulus-driven attention in the brain. *Nature reviews. Neuroscience*, 3(3), p.201.
- 70 Habas, C., Kamdar, N., Nguyen, D., Prater, K., Beckmann, C.F., Menon, V. and Greicius, M.D., 2009. Distinct cerebellar contributions to intrinsic connectivity networks. *Journal of neuroscience*, 29(26), pp.8586-8594.
- 71 Stoodley, C.J., 2012. The cerebellum and cognition: evidence from functional imaging studies. *The Cerebellum*, 11(2), pp.352-365.
- 72 Buckner, R.L., 2013. The cerebellum and cognitive function: 25 years of insight from anatomy and neuroimaging. *Neuron*, 80(3), pp.807-815.
- 73 Esterman, M., Thai, M., Okabe, H., DeGutis, J., Saad, E., Laganier, S.E. and Halko, M.A., 2017. Network-targeted cerebellar transcranial magnetic stimulation improves attentional control. *NeuroImage*, 156, pp.190-198.
- 74 Brisenden, J.A., Levin, E.J., Osher, D.E., Halko, M.A. and Somers, D.C., 2016. Functional evidence for a cerebellar node of the dorsal attention network. *Journal of Neuroscience*, 36(22), pp.6083-6096.
- 75 Buckner, R.L., Krienen, F.M., Castellanos, A., Diaz, J.C., Yeo, B.T. 2011. The organization of the human cerebellum estimated by intrinsic functional connectivity. *Journal of Neurophysiology*, 106, pp.2322–2345. doi: 10.1152/jn.00339.2011.
- 76 Kucyi, A., Hove, M.J., Biederman, J., Van Dijk, K.R. and Valera, E.M., 2015. Disrupted functional connectivity of cerebellar default network areas in attention-deficit/hyperactivity disorder. *Human brain mapping*, 36(9), pp.3373-3386.
- 77 Verbruggen, F. and Logan, G.D., 2008. Response inhibition in the stop-signal paradigm. *Trends in cognitive sciences*, 12(11), pp.418-424.
- 78 Broyd, S.J., Demanuele, C., Debener, S., Helps, S.K., James, C.J., Sonuga-Barke, E.J., 2009. Default-mode brain dysfunction in mental disorders: a systematic review. *Neurosci. Biobehav. Rev.* 33, 279–296.
- 79 Anderson, J.S., Ferguson, M.A., Lopez-Larson, M. and Yurgelun-Todd, D., 2011. Connectivity gradients between the default mode and attention control networks. *Brain Connectivity*, 1(2), pp.147-157.
- 80 Fair, D.A., Dosenbach, N.U., Church, J.A., Cohen, A.L., Brahmbhatt, S., Miezin, F.M., Barch, D.M., Raichle, M.E., Petersen, S.E. and Schlaggar, B.L., 2007. Development of distinct control networks

-
- through segregation and integration. *Proceedings of the National Academy of Sciences*, 104(33), pp.13507-13512.
- 81 Van Duijvenvoorde, A.C.K., Achterberg, M., Braams, B.R., Peters, S. and Crone, E.A., 2016. Testing a dual-systems model of adolescent brain development using resting-state connectivity analyses. *NeuroImage*, 124, pp.409-420.
- 82 Kofler, M.J., Rapport, M.D., Sarver, D.E., Raiker, J.S., Orban, S.A., Friedman, L.M. and Kolomeyer, E.G., 2013. Reaction time variability in ADHD: a meta-analytic review of 319 studies. *Clinical psychology review*, 33(6), pp.795-811.
- 83 Suskauer, S.J., Simmonds, D.J., Caffo, B.S., Denckla, M.B., Pekar, J.J. and Mostofsky, S.H., 2008. fMRI of intrasubject variability in ADHD: anomalous premotor activity with prefrontal compensation. *Journal of the American Academy of Child & Adolescent Psychiatry*, 47(10), pp.1141-1150.
- 84 McLeod, K.R., Langevin, L.M., Goodyear, B.G. and Dewey, D., 2014. Functional connectivity of neural motor networks is disrupted in children with developmental coordination disorder and attention-deficit/hyperactivity disorder. *NeuroImage: Clinical*, 4, pp.566-575.
- 85 Kelly, C., Castellanos, F.X., Tomaselli, O., Lisdahl, K., Tamm, L., Jernigan, T., Newman, E., Epstein, J.N., Molina, B.S., Greenhill, L.L. and Potkin, S.G., 2017. Distinct effects of childhood ADHD and cannabis use on brain functional architecture in young adults. *NeuroImage: Clinical*, 13, pp.188-200.
<http://doi.org/10.1016/j.nicl.2016.09.012>
- 86 Shaw, P., Eckstrand, K., Sharp, W., Blumenthal, J., Lerch, J.P., Greenstein, D.E.E.A., Clasen, L., Evans, A., Giedd, J. and Rapoport, J.L., 2007. Attention-deficit/hyperactivity disorder is characterized by a delay in cortical maturation. *Proceedings of the National Academy of Sciences*, 104(49), pp.19649-19654.
- 87 Ducharme, S., Hudziak, J.J., Botteron, K.N., Albaugh, M.D., Nguyen, T.V., Karama, S., Evans, A.C. and Brain Development Cooperative Group, 2012. Decreased regional cortical thickness and thinning rate are associated with inattention symptoms in healthy children. *Journal of the American Academy of Child & Adolescent Psychiatry*, 51(1), pp.18-27.
- 88 Shaw, P., Gilliam, M., Liverpool, M., Weddle, C., Malek, M., Sharp, W., Greenstein, D., Evans, A., Rapoport, J. and Giedd, J., 2011. Cortical development in typically developing children with symptoms of hyperactivity and impulsivity: support for a dimensional view of attention deficit hyperactivity disorder. *American Journal of Psychiatry*, 168(2), pp.143-151.
- 89 Chabernaud, C., Mennes, M., Kelly, C., Nooner, K., Di Martino, A., Castellanos, F.X. and Milham, M.P., 2012. Dimensional brain-behavior relationships in children with attention-deficit/hyperactivity disorder. *Biological psychiatry*, 71(5), pp.434-442. <http://doi.org/10.1016/j.biopsych.2011.08.013>
- 90 Mennes, M., Potler, N.V., Kelly, C., Di Martino, A., Castellanos, F.X. and Milham, M.P., 2011. Resting state functional connectivity correlates of inhibitory control in children with attention-deficit/hyperactivity disorder. *Frontiers in psychiatry*, 2. <http://doi.org/10.3389/fpsy.2011.00083>
- 91 Ernst, M., Torrisi, S., Balderston, N., Grillon, C. and Hale, E.A., 2015. fMRI functional connectivity applied

-
- to adolescent neurodevelopment. *Annual review of clinical psychology*, 11, pp.361-377.
- 92 Turk-Browne, N.B., 2013. Functional interactions as big data in the human brain. *Science*, 342(6158), pp.580-584.
- 93 Tamnes, C.K., Fjell, A.M., Westlye, L.T., Østby, Y. and Walhovd, K.B., 2012. Becoming consistent: developmental reductions in intraindividual variability in reaction time are related to white matter integrity. *Journal of Neuroscience*, 32(3), pp.972-982.
- 94 Luciana, M., 2010. Adolescent brain development: Current themes and future directions: Introduction to the special issue.
- 95 Poldrack, R.A., 2015. Is “efficiency” a useful concept in cognitive neuroscience?. *Developmental cognitive neuroscience*, 11, pp.12-17.
- 96 Kuntsi, J. and Klein, C., 2011. Intraindividual variability in ADHD and its implications for research of causal links. In *Behavioral neuroscience of attention deficit hyperactivity disorder and its treatment* (pp. 67-91). Springer Berlin Heidelberg.
- 97 Caballero-Gaudes, César, and Richard C. Reynolds. Methods for cleaning the BOLD fMRI signal. *Neuroimage*. 2017: 128-149.
- 98 Di Martino A, Yan CG, Li Q, Denio E, Castellanos FX, Alaerts K, Anderson JS, Assaf M, Bookheimer SY, Dapretto M, Deen B. The autism brain imaging data exchange: towards a large-scale evaluation of the intrinsic brain architecture in autism. *Molecular psychiatry*. 2014 Jun 1;19(6):659-67.
- 99 Fair D, Nigg JT, Iyer S, Bathula D, Mills KL, Dosenbach NU, Schlaggar BL, Mennes M, Gutman D, Bangaru S, Buitelaar JK. Distinct neural signatures detected for ADHD subtypes after controlling for micro-movements in resting state functional connectivity MRI data. *Frontiers in systems neuroscience*. 2013 Feb 4;6:80.
- 100 Ciric R, Wolf DH, Power JD, Roalf DR, Baum GL, Ruparel K, Shinohara RT, Elliott MA, Eickhoff SB, Davatzikos C, Gur RC., Bassett DS, Satterthwaite, TD. Benchmarking of participant-level confound regression strategies for the control of motion artifact in studies of functional connectivity. *Neuroimage*. 2017 Mar 14.
- 101 Power JD, Laumann TO, Plitt M, Martin A, Petersen SE. On Global fMRI Signals and Simulations. *Trends in Cognitive Sciences*. 2017 Sep 19
- 102 Burgess GC, Kandala S, Nolan D, Laumann TO, Power JD, Adeyemo B, Harms MP, Petersen SE, Barch DM. Evaluation of denoising strategies to address motion-correlated artifacts in resting-state functional magnetic resonance imaging data from the human connectome project. *Brain connectivity*. 2016 Nov 1;6(9):669-80.
- ¹⁰³ Ciric R, Wolf DH, Power JD, Roalf DR, Baum GL, Ruparel K, Shinohara RT, Elliott MA, Eickhoff SB, Davatzikos C, Gur RC. Benchmarking of participant-level confound regression strategies for the control of motion artifact in studies of functional connectivity. *Neuroimage*. 2017 Mar 14.
- 104 Caballero-Gaudes, César, and Richard C. Reynolds. Methods for cleaning the BOLD fMRI

signal. *Neuroimage*. 2017: 128-149.

¹⁰⁵ Power, J.D. et al. (2014) Methods to detect, characterize, and remove motion artifact in resting state fMRI. *Neuroimage* 84,320–341)