



King's Research Portal

DOI:

[10.1159/000477098](https://doi.org/10.1159/000477098)

Document Version

Peer reviewed version

[Link to publication record in King's Research Portal](#)

Citation for published version (APA):

Austin, R. S., Haji Taha, Z., Festy, F., Cook, R., Andiappan, M., J., G., I.A., P., & Moazzez, R. (2017). Quantitative Swept-Source Optical Coherence Tomography of Early Enamel Erosion in vivo. *Caries research*, 51(4), 410-418. <https://doi.org/10.1159/000477098>

Citing this paper

Please note that where the full-text provided on King's Research Portal is the Author Accepted Manuscript or Post-Print version this may differ from the final Published version. If citing, it is advised that you check and use the publisher's definitive version for pagination, volume/issue, and date of publication details. And where the final published version is provided on the Research Portal, if citing you are again advised to check the publisher's website for any subsequent corrections.

General rights

Copyright and moral rights for the publications made accessible in the Research Portal are retained by the authors and/or other copyright owners and it is a condition of accessing publications that users recognize and abide by the legal requirements associated with these rights.

- Users may download and print one copy of any publication from the Research Portal for the purpose of private study or research.
- You may not further distribute the material or use it for any profit-making activity or commercial gain
- You may freely distribute the URL identifying the publication in the Research Portal

Take down policy

If you believe that this document breaches copyright please contact librarypure@kcl.ac.uk providing details, and we will remove access to the work immediately and investigate your claim.

1 **Title page**

2 **Title:** Quantitative swept-source optical coherence tomography of early enamel erosion in vivo

3 **Author names:**

4 RS Austin^a, M Haji Taha^a, F Festy^a, R Cook^a, M Andiappan^a, J Gomez^b, IA Pretty^b, R Moazzez^a

5 **Authors institutional affiliations:**

6 a King's College London Dental Institute, Guy's, King's and St.Thomas' Hospitals, London, SE1 9RT, UK.

7 b University of Manchester, School of Dentistry. The Dental Health Unit Manchester, Manchester, M13 9PL, UK

8 **Short Title**

9 Optical coherence tomography for detection of enamel erosion in vivo

10 **Keywords**

11 Biophotonics, Optical Coherence Tomography, Tooth wear, Salivary pellicle

12 **Corresponding author contact information:**

13 Dr. Rupert Austin, Clinical Lecturer in Prosthodontics, Tissue Engineering and Biophotonics, King's College London
14 Dental Institute, Room 36, Floor 17, Tower Wing, Guy's Hospital, London SE1 9RT. Tel +44 (0)20 7188 8096
15 rupert.s.austin@kcl.ac.uk

16 **Declaration of interests:**

17 There are no conflicts of interest.

18

19 **Abstract:**

20 Swept-source optical coherence tomography (SS-OCT) has potential for in vivo quantitative evaluation of micro-
21 structural enamel surface phenomena occurring during early erosive demineralisation. This randomized controlled
22 single-blind crossover clinical study aimed to evaluate the use of SS-OCT for detection of optical changes in the
23 enamel of 30 healthy volunteers subjected to orange juice rinsing (erosive challenge) in comparison to mineral water
24 rinsing (control), according to wiped and non-wiped enamel surface states. Participants were randomly allocated to 60
25 minutes orange juice rinsing (pH 3.8) followed by 60 minutes water rinsing (pH 6.7) and vice versa, with a two-week
26 wash-out period. In addition, the labial surfaces of the right or left maxillary incisors were wiped prior to SS-OCT
27 imaging. An automated ImageJ algorithm was designed to analyse the backscattered OCT signal intensity (D) after
28 orange juice rinsing compared to after water rinsing. D was quantified as the OCT signal scattering from the ~33 μm
29 subsurface enamel, normalised by the total OCT signal intensity entering the enamel. The backscattered OCT signal
30 intensity increased 3.1% (95% CI 1.1% to 5.1%) in the wiped incisors and 3.5% (95% CI 1.5% to 5.5%) in the
31 unwiped incisors ($P < 0.0001$). Wiping reduced the backscattered OCT signal intensity by 1.7% (95% CI -3.2% to -
32 0.3%) ($p = 0.02$), in comparison to the unwiped enamel surfaces, for both rinsing solutions ($P = 0.2$). Swept-source
33 Optical Coherence Tomography detected OCT signal changes in the superficial subsurface enamel of maxillary
34 central incisor teeth of healthy volunteers after orange juice rinsing.

35 **Introduction**

36 Detection of early erosive tooth wear is a problem of increasing clinical concern; despite recent improvements in our
37 understanding of the risk factors, including common dietary acids [Bartlett et al.; 2013] to date there are no clinically
38 accepted techniques to measure early erosion in vivo. Optical coherence tomography (OCT) has significant potential
39 for non-invasive non-ionizing detection of the earliest signs of enamel erosion [Huysmans et al., 2011], such as
40 changes in surface texture [Austin et al., 2015 ; Austin et al., 2015; Bartlett et al., 2008] or enamel mineral loss
41 [Amaechi et al., 2003; Chew et al., 2014; Popescu et al., 2008], prior to irreversible tissue destruction. There have
42 been significant in vitro developments for detection of early erosion using OCT [Chew et al., 2014], however early
43 erosive wear remains a very challenging clinical condition to detect in vivo. Therefore, further clinical research into
44 early erosion detection is required, especially because diagnosing erosion as early as possible has great therapeutic
45 potential, in order to ensure that as much enamel as possible is preserved throughout the patient's lifetime.

46 Detection of enamel erosion using OCT signal changes is thought to rely on acid demineralization causing surface
47 texture changes and increased subsurface enamel porosity thus quantitatively changing the backscattered OCT signal
48 in the immediate subsurface layers (Huysmans et al., 2011). The histology of the early erosion lesion is thought to
49 involve partial demineralization confined to the enamel surface and immediate sub-surface, whereas in contrast the
50 carious lesion involves the formation of a deeper subsurface lesion of greater demineralization [Popescu et al., 2008;
51 Ten Cate et al., 2008]. This subsurface demineralization significantly changes the refractive index of the
52 demineralized tissue [Hariri et al., 2013; Meng et al., 2009; Popescu et al., 2008], which can then be accentuated by
53 dehydration effects to enhance OCT detection. [Nazari et al., 2013]. In vitro OCT erosion research has recently
54 demonstrated that unpolished natural enamel surfaces demonstrated OCT optical changes after as little as 10 minutes
55 of orange juice erosion however it was not clear how these changes should be optimally detected using the OCT A-
56 scan profiles [Chew et al., 2014]. Previous research into optimization of dental OCT for enamel demineralization
57 assessment have proposed that using near-infrared wavelengths (1310 nm) are ideal to improve axial imaging depth in
58 enamel and moreover that polarization-sensitive OCT resolves surface and immediate subsurface demineralization by
59 reducing surface artefact formation due to the strong Fresnel reflection [Ashtamker et al 2011] occurring at the air-
60 enamel interface which may mask early demineralization [Jones et al 2016]. However there is no consensus on the
61 optimal technical specifications for in vivo dental OCT and additionally, the impact of clinical variables influencing in
62 vivo enamel OCT imaging are not clearly understood. Thus quantitative detection of early enamel erosion using OCT
63 in vivo is complicated by multiple interacting surface phenomena which are poorly defined, including the composition
64 and function of the acquired enamel pellicle [Carpenter et al., 2014; Hannig et al., 2003; Moazzez et al., 2014], the
65 degree of hydration of the dental hard tissue during imaging [Chan et al., 2014; Nazari et al., 2013] and the micro-
66 textural changes of the curved enamel surface in vivo during erosion [Austin et al., 2015 ; Austin et al., 2015].
67 Therefore, there carefully controlled clinical studies simulating early erosion are required to elucidate the optimal
68 analytical techniques for imaging early erosive changes.

69 The primary aim of this study was to determine if swept-source OCT (SS-OCT) signal changes are detectable in the
70 enamel of the maxillary incisors of healthy volunteers after orange juice rinsing (erosive challenge), in comparison
71 with mineral water rinsing (control). The secondary aim was to determine if wiping the enamel surface with a damp

cotton pledget immediately before imaging affected OCT measurements. The null hypotheses were: SS-OCT will not detect in vivo enamel OCT signal changes after rinsing with an erosive challenge in comparison to rinsing with a non-erosive challenge and; wiping of the enamel surface prior to imaging will make no difference to the enamel OCT signal properties for both rinsing solutions, in comparison to not wiping the enamel surface.

Materials and Methods

A randomized single-blind controlled crossover clinical study was conducted in healthy volunteers. Ethical (Manchester University Research Ethics Committee 5 - Project Ref 13136) and NHS R&D approvals were granted. The study was conducted in the National Institute of Health Research (NIHR) Biomedical Research Centre at Guy's and St Thomas' NHS Hospital Foundation Trust and King's College London by dentally qualified clinical researchers.

Figure 1 shows the study design and flow chart. 30 participants were recruited from King's College London students and faculty staff who responded to an email advertisement inviting healthy volunteers to take part in research. The eligibility criteria included males or females aged 18 or more with sound unrestored maxillary incisors (12, 11, 21, 22) with an absence of caries, erosion, dentine hypersensitivity, enamel cracks, opacities, hypomineralisation, staining, orthodontic appliances or imbrications affecting 12, 11, 21, 22. Further exclusion criteria included relevant medical conditions, including any history of allergy to consumer products. Absence of erosion was defined as a cumulative Basic Erosive Wear Examination score ≤ 9 thus indicating no or low risk of erosive wear [Bartlett et al., 2008]. A cumulative BEWE score less than 9 typically indicated that participants had presence of moderately worn teeth in only 2 sextants (most commonly the mandibular first molars) displaying erosion lesions covering no more than 50% of the affected surface, whilst the remainder of the dentition displayed early erosion lesions seen as initial change in surface texture and no dentine exposure. Participant's age range was 19 to 28 years old.

On entering the study, participants were provided with a 1450 ppm F wash-out toothpaste (Colgate Cavity Protection Regular Flavour, Colgate Palmolive Ltd, Piscataway, USA) and a soft-bristled toothbrush (Colgate Palmolive Ltd) to be used two minutes twice a day at least 2 weeks prior to the study (including 1 hour before attending), throughout the duration of the study including 2 weeks after completion.

Participants were randomly allocated to the order of rinsing (i.e. either Orange Juice rinsing in Arm 1 followed by Water Rinsing in Arm 2 or vice versa) using allocation concealment implemented by a study administrator based on simple randomization. Each participant was sub-randomized to right-hand side (tooth 11, 12) or left-hand side (tooth 21, 22) enamel surface wiping with a damp cotton wool roll, prior to SS-OCT imaging. During both Arms, participants underwent six rinsing cycles, following previously published in vivo erosion models [West et al 1998], with each cycle involving rinsing with 25 ml of the solution for 60 seconds, expectorating and then repeating the rinse immediately afterwards until ten 60 second rinses were completed in 10 minutes. The orange juice (Sainsbury's Orange Juice, Basics, Sainsbury's Ltd, London, UK) had pH 3.8 and titratable acidity 27 ml (measured as the volume of 0.1 M NaOH solution required to raise the pH to 7.00). The mineral water (Volvic™ natural still, Premier Waters Ltd, London) had pH 6.7. After a two week washout, the participants crossed over to the alternative rinse, according to the allocation schedule. All participants were followed up 2 weeks later to monitor for any adverse events.

107 All SS-OCT imaging was carried out by a single operator, blinded to the rinsing solution, using a multi-beam swept-
108 source Fourier-Domain clinical OCT scanner (VivoSight Topical OCT system, Michelson Diagnostics Limited,
109 Maidstone, UK) operating using a Santec HSL-2000-11 wide sweep laser with a >25 mW peak power and centre
110 wavelength 1305 ± 15 nm. The optical resolution was <7.5 μm and the A-line rate was 10 KHz with a frame rate of 20
111 fps (1 mm B-Scan width / 250 A-Scans). As shown in Figure 2, the topical OCT probe was mounted in custom-built,
112 comprising an adjustable head and chin support with the OCT probe mounted on a platform [McGrady et al., 2012].
113 The geometry stabilizing unit ensured that the subject remained static and enabled the OCT probe to be reproducibly
114 repositioned whilst the red laser spot guiding the imaging at a perpendicular axis to the tooth surface. Four 1 mm x 1
115 mm x 1.5 mm volumes (x, y, z) of the labial aspect of each incisor tooth were scanned, thus sixteen B-stack volumes
116 were captured per participant per cycle, with each volume consisting of 20 B-scans with x, z dimensions of 1 mm x
117 1.5 mm, each with 50 μm y spacing. Immediately prior to imaging, participant's lips were retracted using an oral soft
118 tissue retractor (Optragate, Ivolar Vivadent AG, Liechtenstein) and the labial aspect of the right or left pair of upper
119 incisors (12 and 11 or 21 and 22) was gently wiped using a damp cotton wool roll as per the randomization schedule.
120 All images were completed in 2½ minutes for each participant in order to minimise dehydration effects, with each
121 tooth scanned in less than 10 seconds.

122 The primary outcome was expressed as the change in backscattered OCT signal intensity (D), at the level of the
123 incisor teeth pairs (i.e. 12+11 or 21+22). All analyses were carried out blinded using an automated image analysis
124 algorithm (Image J version 1.45S; Wayne Rashband, NIH, Bethesda, Maryland), designed to quantify changes in the
125 enamel OCT signal after erosion, based on in vitro pilot data [Chew et al., 2014]. As shown in Figure 3, the algorithm
126 analysed individual A-scan z profiles in order to quantify the OCT signal scattering in the immediately sub-surface
127 (<33 μm) enamel. This was automatically calculated as the difference between the amount of OCT signal entering the
128 tissue (Intensity In) and the amount of OCT signal scattered in the immediate subsurface enamel (Intensity In minus
129 Intensity Out), which was then normalized by Intensity In in order to provide a ratio between 0 and 1 (i.e. 1 = 100%
130 backscattered OCT signal intensity and 0.5 = 50 % backscattered OCT signal intensity). All analyses were carried out
131 by a single operator who was blind to all interventions.

132 The precision of measurement, at the level of the incisor teeth pairs, was estimated by calculating the reproducibility
133 (SD) of thirty repeated measurements of the same sites of the same pair of teeth of the same participant. Using in vitro
134 data, a sample size of 28 was estimated, based on the assumption that SS-OCT would detect a 5% change in
135 backscattered OCT signal intensity (D) after 30 minutes orange juice rinsing with a standard deviation of 5%
136 assuming a power of 95 % and $p < 0.01$ regarded as statistically significant. The ImageJ macro was used to
137 automatically analyse the image stacks prior to exporting the resulting data as .CSV format for analysis using
138 statistical software. A Shapiro-Wilk's test and histogram were used to determine whether data demonstrated a normal
139 distribution, prior to statistical comparisons. Initially, a primary random effects model to evaluate any possible
140 unwanted interaction effects was fitted to test the various combinations of water vs. orange juice rinsing, rinsing
141 durations, wiping vs. not wiping and order of allocation. As the interaction effect was not significant, the final model
142 included only the main effects of treatment and wiped status to assess the overall effects of the rinsing solution
143 according to the wiping status on the enamel SS-OCT optical properties. All statistical analyses with the Statistical

144 package for Social Sciences (SPSS Ver.21 for Windows, SPSS, Chicago, Illinois) and Stata version 12.0 with $P < 0.05$
145 inferring statistical significance.

146 **Results**

147 All 30 participants who met the eligibility criteria, consented to take part in the study completed the study, with no
148 loss to follow-up. The reproducibility (SD) of the 30 repeated measurements was 0.003. Following automated
149 quantification of all acquired SS-OCT images using the ImageJ-based algorithm, the randomisation code was
150 unmasked and resulting data were allocated to the appropriate group according to rinsing and wiping status. Data were
151 normally distributed, therefore means and 95 % confidence intervals (95 % CI) were quantified and parametric tests
152 applied. The primary random effects model included the interaction terms 'Rinsing duration' X 'Order of allocation',
153 'Rinsing duration' X 'wiping status' and 'Rinsing duration' X 'Intervention'. Since none of these interaction effects
154 were statistically significant ($p > 0.05$), these terms were ignored for the definitive analysis which was carried out to
155 analyze the overall effect in the backscattered OCT signal intensity (D) of incisor pairs allocated to the rinsing
156 solutions (orange juice / water) according to the enamel surface status (wiped or not wiped).

157 As shown in Figure 4, there were significant increases in the backscattered OCT signal intensity (D) of the labial
158 enamel of the incisor pairs after repeated rinsing with orange juice in comparison to water ($P < 0.0001$). The
159 backscattered OCT signal intensity increased 3.1% (95% CI 1.1% to 5.1%) in the wiped incisors and 3.5% (95% CI
160 1.5% to 5.5%) in the unwiped incisors. When the effect of the wiping was considered, there was a significant decrease
161 in backscattered OCT signal intensity of 1.7% (95% CI -3.2 % to -0.3%) ($p = 0.02$), in comparison to the unwiped
162 enamel surfaces. At follow up, 6 (20 %) participants reported experiencing mildly sensitive teeth immediately after the
163 orange juice rinsing, however this completely resolved in all cases within 5 days. Figure 5 shows representative OCT
164 B-scans from the labial enamel of the same area of the same tooth after rinsing for 60 minutes with water (left hand
165 side images) and with orange juice (right side images) for unwiped and wiped tooth surfaces. All images display high-
166 resolution air/enamel interface with differing rates of decay of backscattered OCT signal. For the tooth surfaces
167 subjected to orange juice rinsing, the intensity of the backscattered OCT signal in the subsurface enamel surface
168 appears slightly increased after erosion, which suggests erosion has occurred.

169 **Discussion**

170 The present study investigated whether SS-OCT could detect changes in the OCT signal in healthy enamel subjected
171 to rinsing with an erosive challenge (orange juice), in comparison to rinsing with a non-erosive challenge (mineral
172 water). There were statistically significant increases in the backscattered OCT signal intensity after orange juice
173 rinsing in comparison to water rinsing of 3.1% for wiped incisors and 3.5% for unwiped incisors ($P < 0.0001$). Previous
174 studies have also found that demineralization results in increased scattering of the near-infrared OCT signal in the
175 enamel [Hariri et al., 2013; Huynh et al 2004], however this is the first in vivo study to pick up these changes during
176 early erosion. An ideal optical diagnostic method for enamel erosion should be able to detect the earliest pathological
177 signs such as quantitative optical changes induced by enamel mineral loss [Amaechi et al., 2003; Chew et al., 2014;
178 Popescu et al., 2008] or changes in surface characteristics [Austin et al., 2015; Huysmans et al., 2011; Rakhmatullina

179 et al., 2011; Young and Tenuta, 2011], prior to irreversible bulk tissue loss [Wilder-Smith et al., 2009]. As shown in
180 Figure 3, the algorithm in the present study was designed to detect changes in the intensity of the backscattered OCT
181 signal in the immediate subsurface enamel (33 μm) and then normalise this backscattered OCT signal intensity as a
182 ratio of the peak intensity at the air-enamel surface, in order to minimise impact of optical artefacts which are known to
183 complicate measurements purely based on enamel surface OCT signal [Chan et al., 2013; Huysmans et al., 2011].
184 Previous authors have postulated that enamel demineralization causing surface texture changes and increased
185 subsurface enamel porosity which can be quantitatively measured as a change in the backscattered OCT signal
186 intensity of the OCT signal in the deep subsurface layers [Huysmans et al., 2011], however concerns have been
187 expressed about the negative impact of OCT artefact formation at rough surface interfaces unless polarization-
188 sensitive OCT is used [Jones et al 2016]. This present study has demonstrated that the immediate subsurface depth of
189 33 μm was determined as optimal in contrast to previous studies, which have excluded the superficial 30 – 40 μm and
190 only used data from the profile up to 150 μm depth, due to concerns about surface artefacts and inability to identify a
191 more superficial plateauing of the decay in signal intensity [Chew et al., 2014]. For this present study, a custom
192 algorithm analysed all acquired A-scan profiles in order to exploit the improved depth of focus and image clarity from
193 the four interferometer channels employed in this clinical SS-OCT system which avoided the Fresnel reflection
194 causing artificially initial steep decay in intensity of backscattered OCT signal seen in previous in vitro systems [Chew
195 et al., 2014]. Therefore, as shown in Figure 5, the OCT signal algorithm was able to detect a more superficial plateau
196 in the backscattered OCT signal within the first 33 μm of the enamel subsurface, which has been discarded in previous
197 studies [Chew et al., 2014]. Therefore, the swept-source OCT system and specialised image analysis software used in
198 this present study detected OCT signal changes in the immediate subsurface enamel, which is contrary to previous
199 concerns that only polarization-sensitive OCT would be able to quantify superficial enamel demineralisation [Jones et
200 al 2016].

201 Clinical detection of early enamel erosion in natural incisors using OCT is more challenging than in vitro detection of
202 advanced erosion in flat polished enamel, as conducted in previous OCT research [Huysmans et al., 2011]. The
203 relative translucency of enamel is significantly impacted by the interprismatic fluid content [Brodbeil et al., 1981] and
204 as SS-OCT is highly sensitive to changes in refractive index of the enamel [Meng et al., 2009]. Therefore, for this
205 present study clinical study, it was paramount to standardise the relative hydration/ dehydration of the teeth. At the
206 enamel surface, the acquired enamel pellicle has a protective effect against erosion; however there remains
207 controversy regarding the fundamental interactions between the acquired enamel pellicle and early dietary erosion in
208 vivo. In situ studies have demonstrated that the pellicle has varying erosion-modifying properties depending on the
209 exact structure and composition, especially with regard to thickness, mineral and protein content [Carpenter et al.,
210 2014; Hannig and Balz, 1999; Hannig and Joiner, 2006; Moazzez et al., 2014]. However, this present study has
211 revealed more subtle superficial backscattered OCT signal changes, not only from erosion but also from the tooth
212 wiping with a damp cotton pledget, which resulted in significantly reduced back scattered OCT signal intensity
213 ($p=0.02$) after both orange juice rinsing and water rinsing. However, for both wiping states, the orange juice rinsed
214 enamel showed consistent increases in subsurface scattering compared to water rinsing ($P<0.0001$) therefore the
215 wiping did not enhance or detract from the erosion measurement. The damp cotton wool role was used immediately
216 prior to imaging, in order to standardise the hydration state of the tooth surfaces and thus ensure that no systematic

217 drift occurred in the measurements due to changing hydration states as the cycles increased. Previous studies have
218 shown that drying the enamel results in increased surface/subsurface brightness [Nazari et al., 2013], therefore the
219 reduction in subsurface scattering after wiping, for both water and orange juiced rinsed enamel, suggests that the
220 wiped enamel surface was more hydrated than the unwiped surface. For the unwiped pellicle group however, it is
221 unlikely that dehydration confounded the measurement in this present study, as all OCT imaging took place rapidly
222 with each scan . However, as dehydration may actually enhance discrimination between sound and demineralized
223 enamel, the optimum clinical protocol for quantification of in vivo demineralisation, has not been determined and
224 requires further research. Future in vivo SS-OCT studies employ robust standardisation of the relative levels of tooth
225 hydration in order to prevent confounding of possible changes in the enamel OCT signal from an erosive challenge.

226 In conclusion, in vivo swept-source Optical Coherence Tomography was able to detect statistically significant
227 increases in the enamel OCT signal after orange juice rinsing in comparison to water rinsing ($P<0.0001$) and the
228 wiping of the enamel surface resulted in statistically reductions in the enamel OCT signal ($P=0.02$). Whilst
229 demineralization is known to increase scattering anisotropy of dental enamel after artificial demineralization at 1310-
230 nm, the exact nature of these optical changes are not fully understood. Future studies are required to elucidate,
231 quantify and characterize the exact nature of the surface events occurring in vivo during enamel erosion and how these
232 events results in changes in the optical properties of the enamel. SS-OCT has potential for non-invasive in vivo
233 detection of early surface events occurring during dietary erosion.

234 **Acknowledgements**

235 This research was supported by the National Institute for Health Research (NIHR) Clinical Research Facility at Guy's
236 & St Thomas' NHS Foundation Trust and NIHR Biomedical Research Centre based at Guy's and St Thomas' NHS
237 Foundation Trust and King's College London. The views expressed are those of the author(s) and not necessarily those
238 of the NHS, the NIHR or the Department of Health.”

239 This research was supported by the Oral Clinical Research Unit based at King's College London and Guy's & St
240 Thomas' NHS Foundation Trust. The views expressed are those of the author(s) and not necessarily those of King's
241 College London.

242 **Declaration of funding**

243 This research was funded by the University of Manchester Grant Ref 13136. The funders had no role in study design,
244 data collection and analysis, decision to publish, or preparation of the manuscript.

245 **Roles of authors**

246 Conceived and designed the experiments: RA, FF, RC, JG, IP, RM. Performed the clinical examination: RA, MHT,
247 RM. Performed the experiments: RA, JG, MHT, RM. Analyzed the data: RA, FF, MA, RC, RM. Wrote the paper: RA,
248 FF, MA, IP, RM

References

- Amaechi BT, Podoleanu A, Higham SM, Jackson DA: Correlation of quantitative light-induced fluorescence and optical coherence tomography applied for detection and quantification of early dental caries. *J Biomed Opt* 2003;8:642-647.
- Ashtamker, Y., V. Freilikher and J. Dainty (2011). "Ambiguity of optical coherence tomography measurements due to rough surface scattering." *Optics express* 19(22): 21658-21664.
- Austin RS, Giusca CL, Macaulay G, Moazzez R, Bartlett DW: Confocal laser scanning microscopy and area-scale analysis used to quantify enamel surface textural changes from citric acid demineralization and salivary remineralization in vitro. *Dent Mater* 2015
- Austin RS, Mullen F, Bartlett DW: Surface texture measurement for dental wear applications. *Surface Topography: Metrology and Properties* 2015;3:023002.
- Bartlett D, Ganss C, Lussi A: Basic Erosive Wear Examination (BEWE): a new scoring system for scientific and clinical needs. *Clinical oral investigations* 2008;12:65-68.
- Bartlett, D. W., A. Lussi, N. X. West, P. Bouchard, M. Sanz and D. Bourgeois (2013). "Prevalence of tooth wear on buccal and lingual surfaces and possible risk factors in young European adults." *J Dent* 41(11): 1007-1013.
- Brodbelt RH, O'Brien WJ, Fan PL, Frazer-Dib JG, Yu R: Translucency of human dental enamel. *J Dent Res* 1981;60:1749-1753.
- Carpenter G, Cotroneo E, Moazzez R, Rojas-Serrano M, Donaldson N, Austin R, Zaidel L, Bartlett D, Proctor G: Composition of enamel pellicle from dental erosion patients. *Caries research* 2014;48:361-367.
- Chan KH, Chan AC, Darling CL, Fried D: Methods for Monitoring Erosion Using Optical Coherence Tomography. *Proceedings of SPIE--the International Society for Optical Engineering* 2013;8566:856606.
- Chan KH, Tom H, Darling CL, Fried D: A method for monitoring enamel erosion using laser irradiated surfaces and optical coherence tomography. *Laser Surg Med* 2014;46:672-678.
- Chew HP, Zakian CM, Pretty IA, Ellwood RP: Measuring Initial Enamel Erosion with Quantitative Light-Induced Fluorescence and Optical Coherence Tomography: An in vitro Validation Study. *Caries research* 2014;48:254-262.
- Jones, R. S., C. L. Darling, J. D. B. Featherstone and D. Fried (2006). "Imaging Artificial Caries on the Occlusal Surfaces with Polarization-Sensitive Optical Coherence Tomography." *Caries Research* 40(2): 81-89.
- Hannig M, Balz M: Influence of in-vitro formed salivary pellicle on enamel erosion. *Caries research* 1999;33:372-379.
- Hannig M, Hess N, Hoth-Hannig W, De Vrese M: Influence of salivary pellicle formation time on enamel demineralization—an in situ pilot study. *Clinical oral investigations* 2003;7:158-161.
- Hannig M, Joiner A: The structure, function and properties of the acquired pellicle. *Monographs in Oral Science* 2006;19:29.
- Hariri I, Sadr A, Nakashima S, Shimada Y, Tagami J, Sumi Y: Estimation of the Enamel and Dentin Mineral Content from the Refractive Index. *Caries research* 2013;47:18-26.

285 Huynh, G. D., C. L. Darling and D. Fried (2004). Changes in the optical properties of dental enamel at 1310 nm after
286 demineralization.

287 Huysmans M, Chew H, Ellwood R: Clinical studies of dental erosion and erosive wear. *Caries Research* 2011;45:60-68.

288 McGrady MG, Ellwood RP, Taylor A, Maguire A, Goodwin M, Boothman N, Pretty IA: Evaluating the use of
289 fluorescent imaging for the quantification of dental fluorosis. *BMC Oral Health* 2012;12:1-8.

290 Meng Z, Yao XS, Yao H, Liang Y, Liu T, Li Y, Wang G, Lan S: Measurement of the refractive index of human teeth by
291 optical coherence tomography. *J Biomed Opt* 2009;14:034010-034010-034014.

292 Moazzez RV, Austin RS, Rojas-Serrano M, Carpenter G, Cotroneo E, Proctor G, Zaidel L, Bartlett DW: Comparison of
293 the possible protective effect of the salivary pellicle of individuals with and without erosion. *Caries research*
294 2014;48:57-62.

295 Nazari A, Sadr A, Campillo-Funollet M, Nakashima S, Shimada Y, Tagami J, Sumi Y: Effect of hydration on assessment
296 of early enamel lesion using swept-source optical coherence tomography. *Journal of biophotonics*
297 2013;6:171-177.

298 Popescu DP, Sowa MG, Hewko MD, Choo-Smith L-Pi: Assessment of early demineralization in teeth using the signal
299 attenuation in optical coherence tomography images. *J Biomed Opt* 2008;13:054053-054053-054058.

300 Rakhmatullina E, Bossen A, Höschele C, Wang X, Beyeler B, Meier C, Lussi A: Application of the specular and diffuse
301 reflection analysis for in vitro diagnostics of dental erosion: correlation with enamel softening, roughness,
302 and calcium release. *J Biomed Opt* 2011;16:107002-107002.

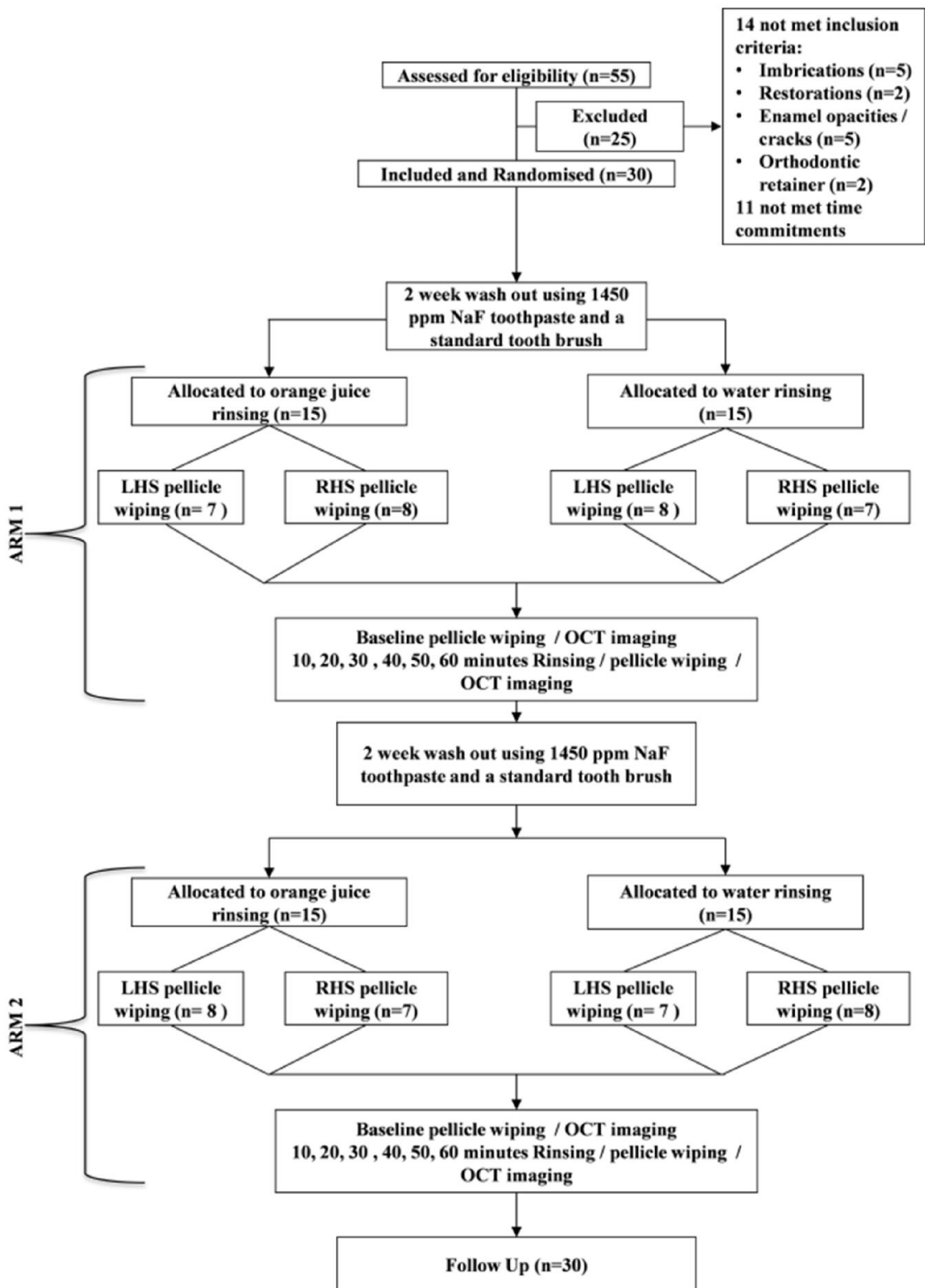
303 Ten Cate JM, Larsen MJ, Pearce E, Fejerskov O: Chemical interactions between the tooth and oral fluids; in Fejerskov
304 O, Kidd EAM (eds): *Dental caries : the disease and its clinical management*. Oxford; Ames, Iowa, Blackwell
305 Munksgaard, 2008, pp 210-231.

306 West, N. X., A. Maxwell, J. A. Hughes, D. M. Parker, R. G. Newcombe and M. Addy (1998). "A method to measure
307 clinical erosion: the effect of orange juice consumption on erosion of enamel." *Journal of Dentistry* 26(4):
308 329-335.

309 Wilder-Smith CH, Wilder-Smith P, Kawakami-Wong H, Voronets J, Osann K, Lussi A: Quantification of dental erosions
310 in patients with GERD using optical coherence tomography before and after double-blind, randomized
311 treatment with esomeprazole or placebo. *The American journal of gastroenterology* 2009;104:2788-2795.

312 Young A, Tenuta LMA: Initial Erosion Models. *Caries research* 2011;45(suppl 1):33-42.

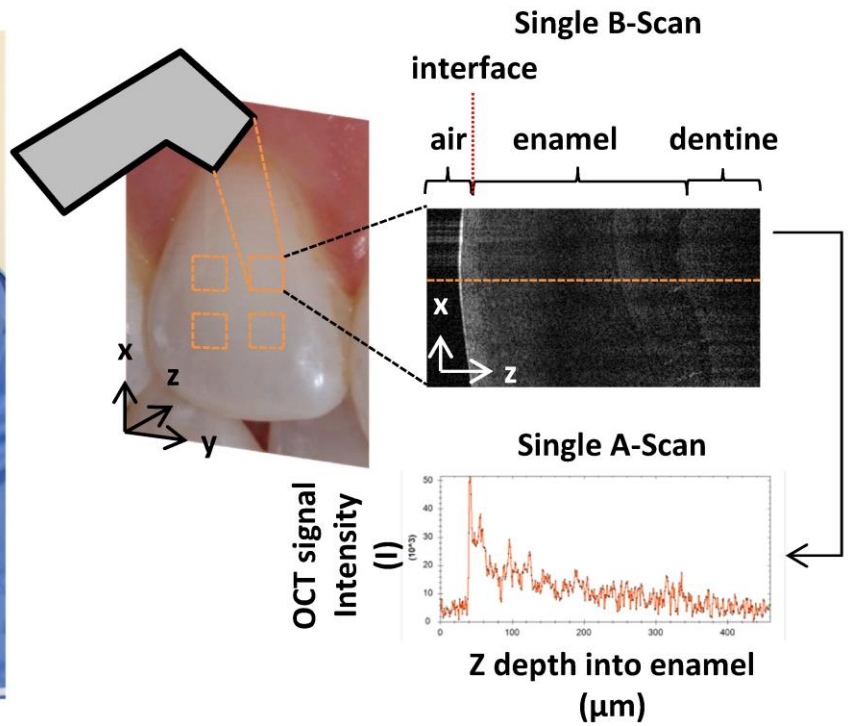
313 **Figures**



314

315
316

Figure 1 Participant flow diagram for each group showing the numbers of participants who were randomly assigned, received intended treatment, and were analysed for the primary outcome



317

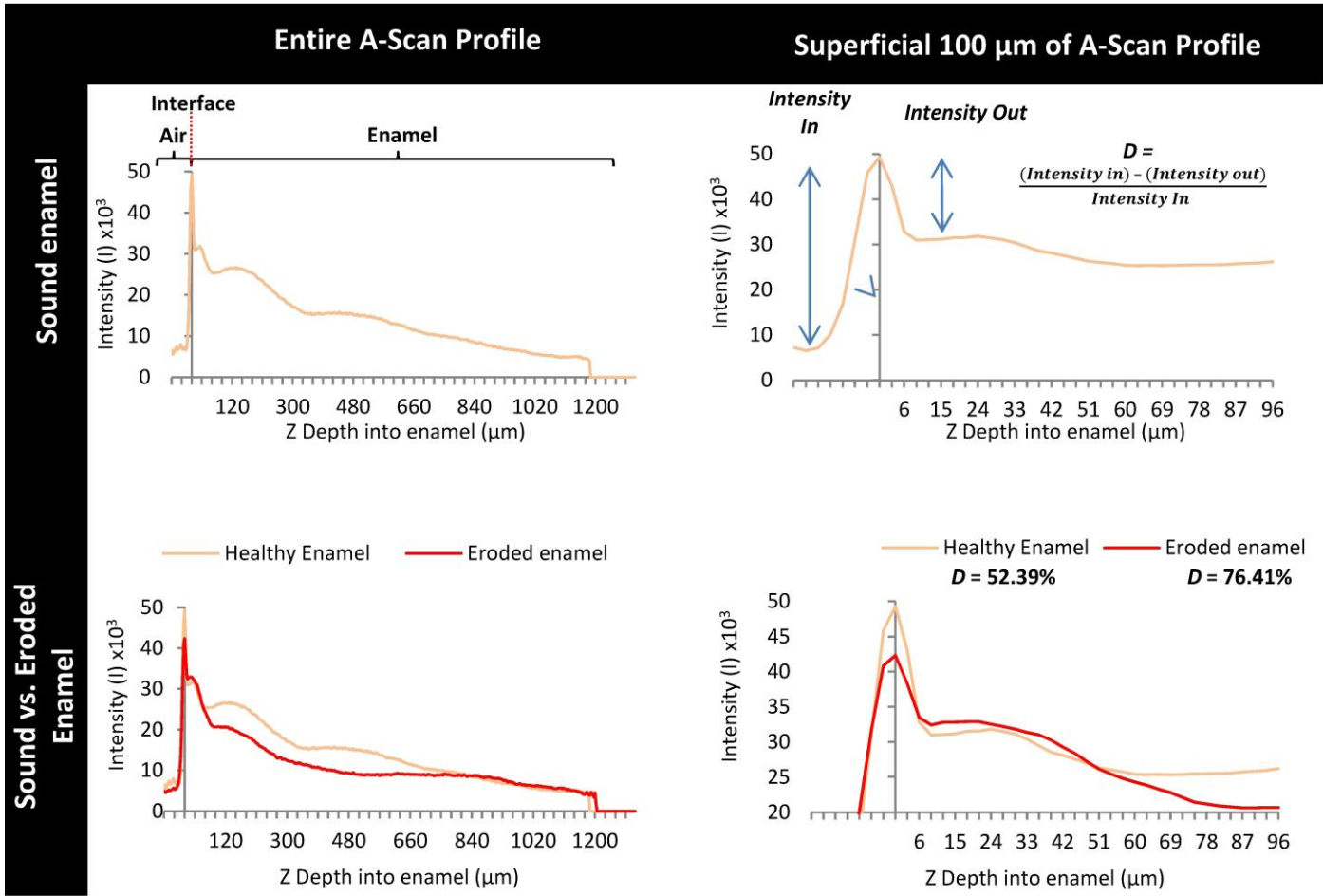
318

319

320

321

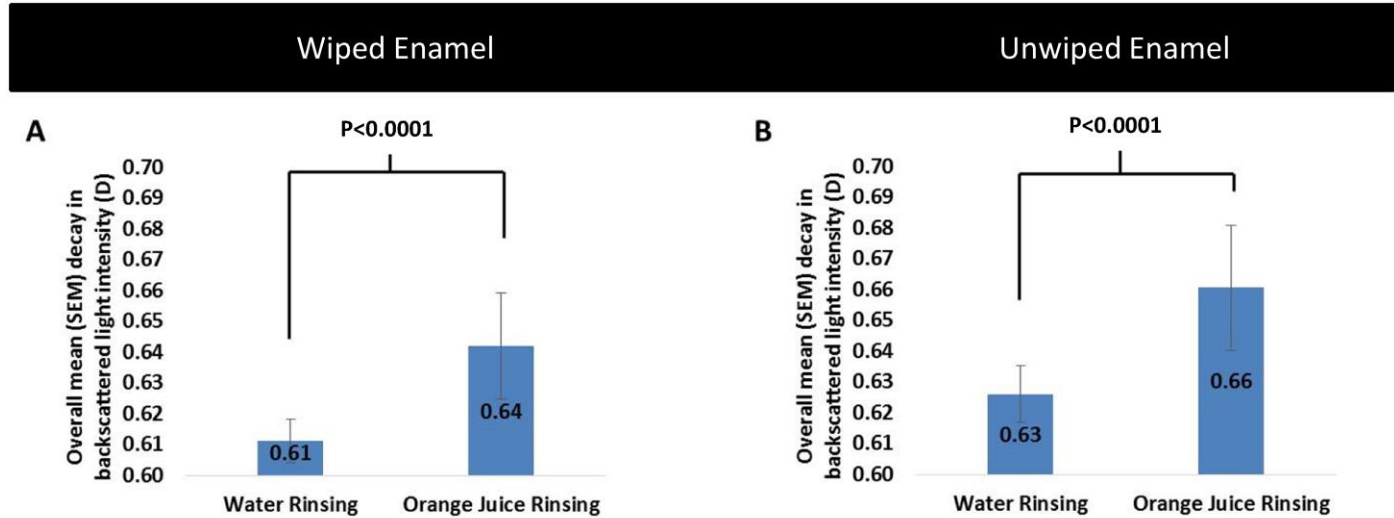
Figure 2 Clinical Optical Coherence Tomography imaging set up: Clinical OCT Probe mounted in geometry stabilizing unit for in vivo imaging of four 1 mm x 1 mm x 1.5 mm (x, y, z) volumes from of the labial aspect of each of the maxillary incisors in order to acquire B-scan stacks. Example of resulting single B-scan (x,z) from which 250 individual A-Scans were extracted for analysis using a custom designed algorithm, designed to quantify the back scattered OCT signal intensity from the superficial subsurface enamel (D).



322

323
324
325
326
327
328
329
330
331
332

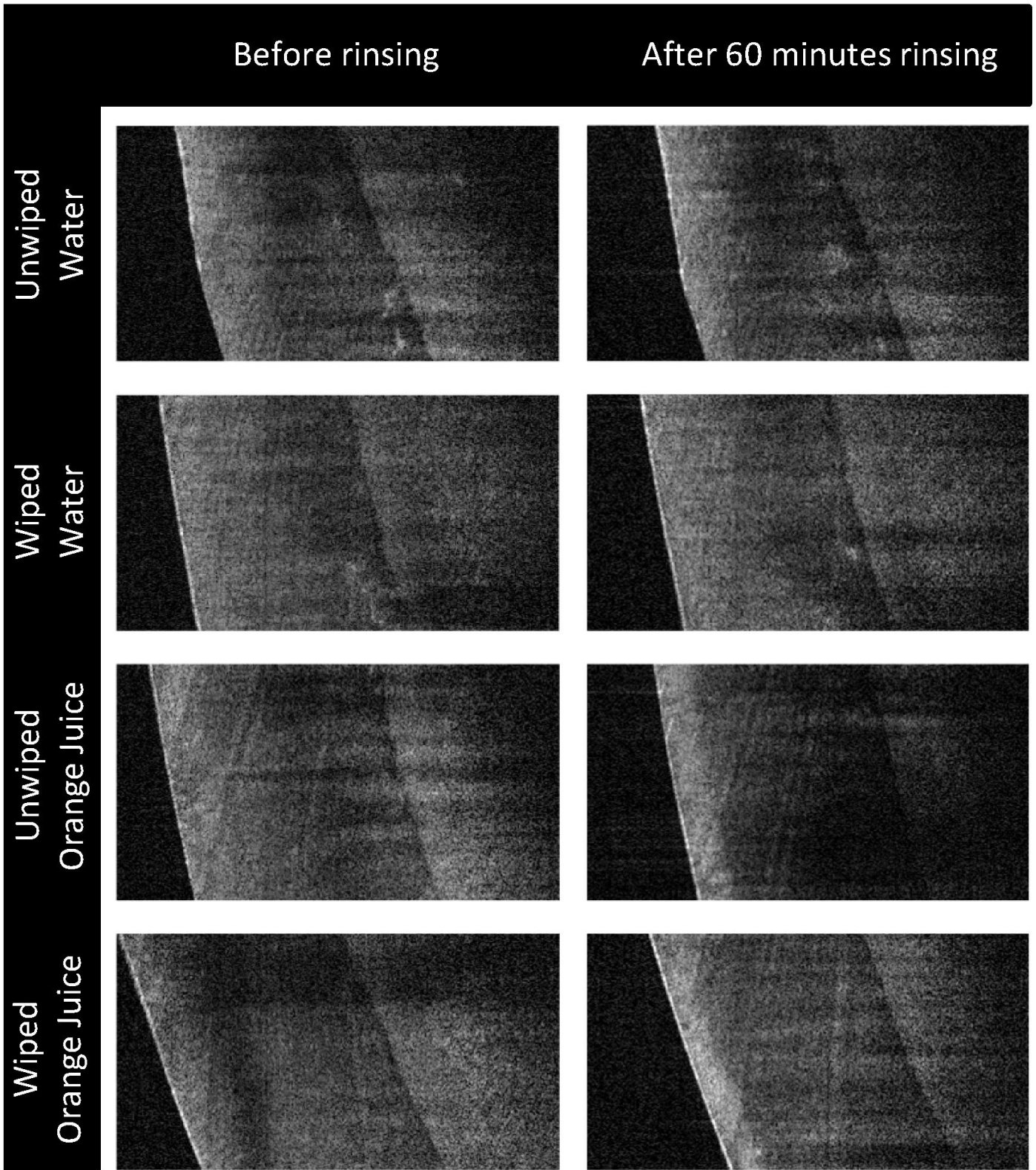
Figure 3 Principle of quantification of backscattered OCT intensity (D) with reference to A-Scan profiles from sound and eroded enamel. Entire A-Scan profile from sound enamel showing location of air-enamel interface using peak intensity and subsequent decay in OCT signal across entire 1500 μm Z depth into enamel. D was quantified by first calculating the amount of OCT signal entering the tissue (Intensity IN) by subtracting from the peak intensity, at the air/enamel interface, the signal intensity within the air prior to the signal entering the enamel thus, Intensity IN thus represented the total light entering the enamel. The intensity of light reflected back out of the superficial enamel (Intensity out) was then calculated by identifying the first plateau as the OCT signal intensity decayed within the immediate subsurface enamel (usually within the first 33 μm). Intensity out was then subtracted from Intensity In and this value was then normalised by the total intensity entering the enamel (Intensity In) to provide a ratio of the backscattered OCT signal intensity (D). Representative A-Scans show an example of the effect of a 24 % increase in the backscattered OCT signal intensity (D) after erosion: there is a distinct reduction in the peak intensity and an increase in the initial plateau <33 μm into the superficial enamel.



333

334
335

Figure 4 Overall mean (SEM) backscattered OCT Signal intensity (D) of the labial enamel of maxillary incisor pairs (n=30) after repeated rinsing with water or orange juice according to wiping status (A: wiped and B: not wiped) with P values



336

337

338

339

Figure 5 Representative OCT B-scans from the labial enamel the incisors of a single participant before and after 60 minutes rinsing, according to the rinsing solutions (water and orange juice) and the wiping status (unwiped and wiped).