



King's Research Portal

DOI:

[10.1093/qjmed/hcw099](https://doi.org/10.1093/qjmed/hcw099)

[Link to publication record in King's Research Portal](#)

Citation for published version (APA):

Webb, J., Yiu, Y., Giastefani, S., & Carr-White, G. (2016). Pericardial mesothelioma. *QJM*, 109(9), 631-632. [hwc099]. <https://doi.org/10.1093/qjmed/hcw099>

Citing this paper

Please note that where the full-text provided on King's Research Portal is the Author Accepted Manuscript or Post-Print version this may differ from the final Published version. If citing, it is advised that you check and use the publisher's definitive version for pagination, volume/issue, and date of publication details. And where the final published version is provided on the Research Portal, if citing you are again advised to check the publisher's website for any subsequent corrections.

General rights

Copyright and moral rights for the publications made accessible in the Research Portal are retained by the authors and/or other copyright owners and it is a condition of accessing publications that users recognize and abide by the legal requirements associated with these rights.

- Users may download and print one copy of any publication from the Research Portal for the purpose of private study or research.
- You may not further distribute the material or use it for any profit-making activity or commercial gain
- You may freely distribute the URL identifying the publication in the Research Portal

Take down policy

If you believe that this document breaches copyright please contact librarypure@kcl.ac.uk providing details, and we will remove access to the work immediately and investigate your claim.

Rare but devastating: a case of pericardial mesothelioma

Journal:	<i>QJM: An International Journal of Medicine</i>
Manuscript ID	Draft
Manuscript Type:	Clinical Picture
Date Submitted by the Author:	n/a
Complete List of Authors:	Webb, Jessica; King's College London, Department of Cardiovascular Imaging Yiu, Yee; King\'s College London, Department of Cardiovascular Imaging Giastefani, Silvia; Croydon University Hospital, Cardiology Department Carr-White, Gerald; Guys and St. Thomas Hospital NHS Foundation Trust, Dept of Cardiology
Keywords:	Cancer, Cardiovascular disease

SCHOLARONE™
Manuscripts

Only

Rare but devastating: a case of pericardial mesothelioma

Jessica Webb BM BCh MA MRCP FHEA^{1 2}, Yee Wei Yiu¹, Silvia Giastefani³,
Gerald Carr-White²

¹ Division of Imaging Sciences and Biomedical Engineering, King's College London,
SE1 7EH, United Kingdom

² Department of Cardiology, St Thomas' Hospital, SE1 7EH, United Kingdom

³ Department of Cardiology, Croydon University Hospital, CR7 7YE, United Kingdom

Address for correspondence

Dr Jessica Webb Division of Imaging Sciences and Biomedical Engineering, 4th floor
Lambeth Wing, King's College London, SE1 7EH, United Kingdom

Tel: +44 7970440562

Email: Jessica.webb@kcl.ac.uk

Word count: 358

Clinical picture

A 68-year-old male presented with symptoms of dyspnoea, productive cough, profound lethargy, weight loss and haematemesis. He was a retired heating engineer with a history of asbestos exposure; two years previously underwent pleural biopsy that confirmed epithelioid mesothelioma. His chest radiograph showed left lower lobe consolidation, a pleural effusion and increased cardiothoracic ratio. He underwent echocardiography that showed a possible thrombus and he was referred for a Cardiac magnetic resonance (CMR).

CMR imaging revealed mediastinal shift with a large left sided mass infiltrating the pericardium, measuring 4.7 x 3 cm over the apical lateral left ventricle and right ventricle free wall. T2 weight images denoted pericardial infiltration with high signal intensity relative to the myocardium. Contrast enhanced images indicated a laminar thrombus in left ventricular apex, as well as signs of necrosis and haemorrhage in the pericardial infiltrate. An ejection fraction of 63% was recorded with no suggestion of pericardial constriction. This patient deteriorated with increasing fatigue and breathlessness and died three weeks later.

Malignant mesothelioma is a rapidly fatal epithelial neoplasm that arises from the pleura, peritoneum and pericardium. Clinicians need to be aware that 80% of patients have a history of asbestos exposure, and prolonged exposure is associated with a shorter latency period to disease development. Following prediction from levels of asbestos exposure in the 20th century, peak of mortality from malignant mesothelioma should span from 2011 to 2015, and a decline in death rate should

1
2
3 now be observed. Despite this, cases are still seen and early diagnosis results in
4
5 improved outcome.
6
7

8 **Figure Legends**

9 **Figure 1A**

10
11
12
13
14
15 3 chamber, T2 weighted image showing large circumferential pericardial mass (black
16
17 arrow) with pericardial effusion (PE). Left atrium (LA), left ventricle (LV) and aorta
18
19 marked.
20
21

22 **Figure 1B**

23
24
25
26 Four chamber image following late gadolinium enhancement, showing areas of
27
28 necrosis and haemorrhage within the pericardial mass (marked with white arrow).
29
30
31 LV, LA, Right ventricle (RV), right atrium (RA) marked.
32
33
34
35
36
37
38
39
40
41
42
43
44
45
46
47
48
49
50
51
52
53
54
55
56
57
58
59
60

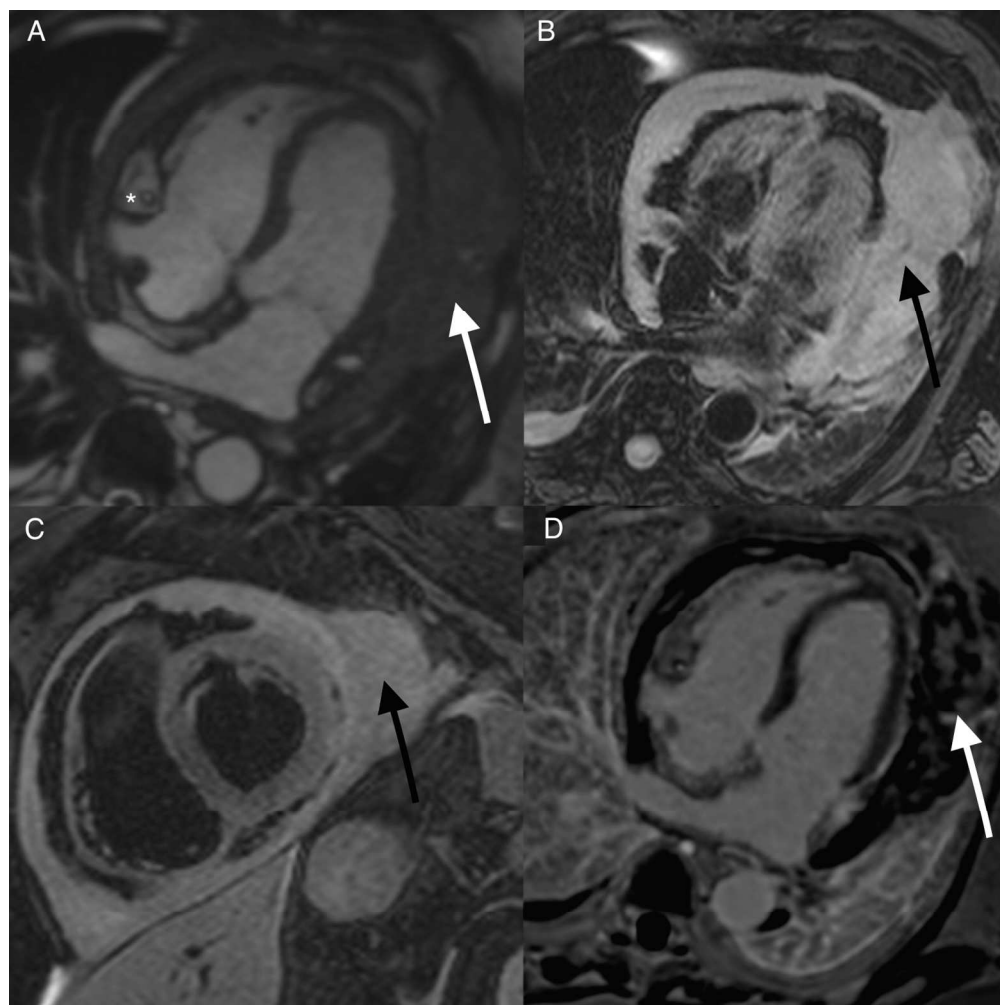


Figure Legends

Figure 1A

3 chamber, T2 weighted image showing large circumferential pericardial mass (black arrow) with pericardial effusion (PE). Left atrium (LA), left ventricle (LV) and aorta marked.

Figure 1B

Four chamber image following late gadolinium enhancement, showing areas of necrosis and haemorrhage within the pericardial mass (marked with white arrow). LV, LA, Right ventricle (RV), right atrium (RA) marked.