



King's Research Portal

DOI:

[10.1371/journal.pmed.1001713](https://doi.org/10.1371/journal.pmed.1001713)

Document Version

Publisher's PDF, also known as Version of record

[Link to publication record in King's Research Portal](#)

Citation for published version (APA):

Proitsi, P., Lupton, M. K., Velayudhan, L., Newhouse, S., Fogh, I., Tsolaki, M., Daniilidou, M., Pritchard, M., Kloszewska, I., Soininen, H., Mecocci, P., Vellas, B., Williams, J., Stewart, R., Sham, P., Lovestone, S., Powell, J. F., & Alzheimer's Disease Neuroimaging Initiative (2014). Genetic predisposition to increased blood cholesterol and triglyceride lipid levels and risk of Alzheimer disease: a Mendelian randomization analysis. *PLoS Medicine*, 11(9), e1001713. <https://doi.org/10.1371/journal.pmed.1001713>

Citing this paper

Please note that where the full-text provided on King's Research Portal is the Author Accepted Manuscript or Post-Print version this may differ from the final Published version. If citing, it is advised that you check and use the publisher's definitive version for pagination, volume/issue, and date of publication details. And where the final published version is provided on the Research Portal, if citing you are again advised to check the publisher's website for any subsequent corrections.

General rights

Copyright and moral rights for the publications made accessible in the Research Portal are retained by the authors and/or other copyright owners and it is a condition of accessing publications that users recognize and abide by the legal requirements associated with these rights.

- Users may download and print one copy of any publication from the Research Portal for the purpose of private study or research.
- You may not further distribute the material or use it for any profit-making activity or commercial gain
- You may freely distribute the URL identifying the publication in the Research Portal

Take down policy

If you believe that this document breaches copyright please contact librarypure@kcl.ac.uk providing details, and we will remove access to the work immediately and investigate your claim.



Genetic Predisposition to Increased Blood Cholesterol and Triglyceride Lipid Levels and Risk of Alzheimer Disease: A Mendelian Randomization Analysis

Petroula Proitsi^{1,2*}, Michelle K. Lupton³, Latha Velayudhan⁴, Stephen Newhouse¹, Isabella Fogh¹, Magda Tsolaki⁴, Makrina Daniilidou⁴, Megan Pritchard¹, Iwona Kloszewska⁶, Hilikka Soininen⁷, Patrizia Mecocci⁸, Bruno Vellas⁹, for the Alzheimer's Disease Neuroimaging Initiative¹, Julie Williams¹⁰ for the GERAD1 Consortium[‡], Robert Stewart¹, Pak Sham², Simon Lovestone¹¹, John F. Powell¹

1 King's College London, Institute of Psychiatry, Psychology and Neuroscience, London, United Kingdom, **2** Department of Psychiatry, State Key Laboratory of Brain and Cognitive Sciences, and Centre for Genomic Sciences, Li Ka Shing Faculty of Medicine, the University of Hong Kong, Hong Kong, **3** Neuroimaging Genetics, QIMR Berghofer Medical Research Institute, Herston, Queensland, Australia, **4** Department of Health Sciences, Psychiatry for the Elderly, University of Leicester, United Kingdom, **5** Memory and dementia center, 3rd Department of Neurology, Aristotle University of Thessaloniki, Greece, **6** Department of Old Age Psychiatry & Psychotic Disorders, Medical University of Lodz, Lodz, Poland, **7** Department of Neurology, Kuopio University Hospital and University of Eastern Finland, Kuopio, Finland, **8** Section of Gerontology and Geriatrics, Department of Medicine, University of Perugia, Perugia, Italy, **9** Department of Internal and Geriatrics Medicine, INSERM U 1027, Gerontopole, Hôpitaux de Toulouse, Toulouse, France, **10** MRC Centre for Neuropsychiatric Genetics and Genomics, Department of Psychological Medicine and Neurology, School of Medicine, Cardiff University, Cardiff, United Kingdom, **11** University of Oxford, Department of Psychiatry, Warneford Hospital, Oxford, United Kingdom

Abstract

Background: Although altered lipid metabolism has been extensively implicated in the pathogenesis of Alzheimer disease (AD) through cell biological, epidemiological, and genetic studies, the molecular mechanisms linking cholesterol and AD pathology are still not well understood and contradictory results have been reported. We have used a Mendelian randomization approach to dissect the causal nature of the association between circulating lipid levels and late onset AD (LOAD) and test the hypothesis that genetically raised lipid levels increase the risk of LOAD.

Methods and Findings: We included 3,914 patients with LOAD, 1,675 older individuals without LOAD, and 4,989 individuals from the general population from six genome wide studies drawn from a white population (total $n = 10,578$). We constructed weighted genotype risk scores (GRSs) for four blood lipid phenotypes (high-density lipoprotein cholesterol [HDL-c], low-density lipoprotein cholesterol [LDL-c], triglycerides, and total cholesterol) using well-established SNPs in 157 loci for blood lipids reported by Willer and colleagues (2013). Both full GRSs using all SNPs associated with each trait at $p < 5 \times 10^{-8}$ and trait specific scores using SNPs associated exclusively with each trait at $p < 5 \times 10^{-8}$ were developed. We used logistic regression to investigate whether the GRSs were associated with LOAD in each study and results were combined together by meta-analysis. We found no association between any of the full GRSs and LOAD (meta-analysis results: odds ratio [OR] = 1.005, 95% CI 0.82–1.24, $p = 0.962$ per 1 unit increase in HDL-c; OR = 0.901, 95% CI 0.65–1.25, $p = 0.530$ per 1 unit increase in LDL-c; OR = 1.104, 95% CI 0.89–1.37, $p = 0.362$ per 1 unit increase in triglycerides; and OR = 0.954, 95% CI 0.76–1.21, $p = 0.688$ per 1 unit increase in total cholesterol). Results for the trait specific scores were similar; however, the trait specific scores explained much smaller phenotypic variance.

Conclusions: Genetic predisposition to increased blood cholesterol and triglyceride lipid levels is not associated with elevated LOAD risk. The observed epidemiological associations between abnormal lipid levels and LOAD risk could therefore be attributed to the result of biological pleiotropy or could be secondary to LOAD. Limitations of this study include the small proportion of lipid variance explained by the GRS, biases in case-control ascertainment, and the limitations implicit to Mendelian randomization studies. Future studies should focus on larger LOAD datasets with longitudinal sampled peripheral lipid measures and other markers of lipid metabolism, which have been shown to be altered in LOAD.

Please see later in the article for the Editors' Summary.

Citation: Proitsi P, Lupton MK, Velayudhan L, Newhouse S, Fogh I, et al. (2014) Genetic Predisposition to Increased Blood Cholesterol and Triglyceride Lipid Levels and Risk of Alzheimer Disease: A Mendelian Randomization Analysis. *PLoS Med* 11(9): e1001713. doi:10.1371/journal.pmed.1001713

Academic Editor: Davey Smith George, University of Bristol, United Kingdom

Received: December 13, 2013; **Accepted:** July 23, 2014; **Published:** September 16, 2014

Copyright: © 2014 Proitsi et al. This is an open-access article distributed under the terms of the Creative Commons Attribution License, which permits unrestricted use, distribution, and reproduction in any medium, provided the original author and source are credited.

Data Availability: The authors confirm that, for approved reasons, some access restrictions apply to the data underlying the findings. Data are from the Genetic and Environmental Risk for Alzheimer's Disease 1 (GERAD1) Consortium, the AddNeuroMed, the Dementia Case Register (DCR) and the Alzheimer's Disease Neuroimaging Initiative (ADNI) studies. Data access is available on request from the following: GERAD1, williamsj@cardiff.ac.uk. AddNeuroMed, simon.lovestone@psych.ox.ac.uk. DCR data, john.powell@kcl.ac.uk. ADNI data is publicly available (adni.loni.usc.edu).

Funding: This work was supported by the National Institute for Health Research (NIHR) Mental Health Biomedical Research Centre and Dementia Unit at South London and Maudsley NHS Foundation Trust and [Institute of Psychiatry] King's College London, the 7th Framework Programme of the European Union (ADAMS project, HEALTH-F4-2009-242257), the Alzheimer's Society, Alzheimer's Research UK, and the European Molecular Biology Organization (EMBO; ASTF 440-2011). Petroula Proitsi is an Alzheimer's Society Post-Doctoral Research Fellow. The fructosamine testing performed in this study was funded by the Psychiatry Research Trust. The computational Linux cluster and the Biomedical Research Centre Nucleus Informatics Team are supported by the National Institute for Health Research (NIHR) Mental Health Biomedical Research Centre and Dementia Unit at South London and Maudsley NHS Foundation Trust and [Institute of Psychiatry] King's

College London. Alzheimer's Disease Neuroimaging Initiative (ADNI) acknowledgments: Data collection and sharing for this project was funded by the Alzheimer's Disease Neuroimaging Initiative (ADNI) (National Institutes of Health Grant U01 AG024904) and DOD ADNI (Department of Defense award number W81XWH-12-2-0012). ADNI is funded by the National Institute on Aging, the National Institute of Biomedical Imaging and Bioengineering, and through generous contributions from the following: Alzheimer's Association; Alzheimer's Drug Discovery Foundation; BioClinica, Inc.; Biogen Idec Inc.; Bristol-Myers Squibb Company; Eisai Inc.; Elan Pharmaceuticals, Inc.; Eli Lilly and Company; F. Hoffmann-La Roche Ltd and its affiliated company Genentech, Inc.; GE Healthcare; Innogenetics, N.V.; IXICO Ltd.; Janssen Alzheimer Immunotherapy Research & Development, LLC.; Johnson & Johnson Pharmaceutical Research & Development LLC.; Medpace, Inc.; Merck & Co., Inc.; Meso Scale Diagnostics, LLC.; NeuroRx Research; Novartis Pharmaceuticals Corporation; Pfizer Inc.; Piramal Imaging; Servier; Synarc Inc.; and Takeda Pharmaceutical Company. The Canadian Institutes of Health Research is providing funds to support ADNI clinical sites in Canada. Private sector contributions are facilitated by the Foundation for the National Institutes of Health (www.fnih.org). The grantee organization is the Northern California Institute for Research and Education, and the study is coordinated by the Alzheimer's Disease Cooperative Study at the University of California, San Diego. ADNI data are disseminated by the Laboratory for Neuro Imaging at the University of Southern California. GERAD1 Consortium acknowledgements: Cardiff University was supported by the Wellcome Trust, Medical Research Council (MRC), Alzheimer's Research UK (ARUK), and the Welsh Assembly Government. ARUK supported sample collections at the Kings College London; the South West Dementia Bank; and Universities of Cambridge, Nottingham, Manchester, and Belfast. The Belfast group acknowledges support from the Alzheimer's Society, Ulster Garden Villages, N.Ireland R&D Office, and the Royal College of Physicians/Dunhill Medical Trust. The MRC and Mercer's Institute for Research on Ageing supported the Trinity College group. The South West Dementia Brain Bank acknowledges support from Bristol Research into Alzheimer's and Care of the Elderly. The Charles Wolfson Charitable Trust supported the OPTIMA group. Washington University was funded by NIH grants, Barnes Jewish Foundation, and the Charles and Joanne Knight Alzheimer's Research Initiative. Patient recruitment for the MRC Prion Unit/UCL Department of Neurodegenerative Disease collection was supported by the UCLH/UCL Biomedical Centre. LASER-AD was funded by Lundbeck SA. The Bonn group was supported by the German Federal Ministry of Education and Research (BMBF), Competence Network Dementia and Competence Network Degenerative Dementia, and by the Alfried Krupp von Bohlen und Halbach-Stiftung. The GERAD1 Consortium also used samples ascertained by the NIMH AD Genetics Initiative. The AddNeuroMed study was supported by funds from the National Institutes for Health Research Biomedical Research Centre for Mental Health at the South London and Maudsley National Health Service Foundation Trust and Institute of Psychiatry, King's College London. AddNeuroMed is funded through the EU FP6 program as part of InnoMed. The funders had no role in study design, data collection and analysis, decision to publish, or preparation of the manuscript.

Competing Interests: The authors have declared that no competing interests exist.

Abbreviations: AD, Alzheimer disease; ANM, AddNeuroMed; APOE, apolipoprotein E; GRS, genotype risk score; GWA, genome wide association; HDL-c, high-density lipoprotein cholesterol; IOP, Institute of Psychiatry; LDL-c, low-density lipoprotein cholesterol; LOAD, late onset Alzheimer disease; MCI, mild cognitive impairment; MRC, Medical Research Council; NBS, National Blood Donors; OR, odds ratio; QC, quality control; SD, standard deviation; TC, total cholesterol; TG, triglycerides; WTCCC2, Wellcome Trust Case Control Consortium.

* Email: petroula.proitsi@kcl.ac.uk

¶ Data used in preparation of this article were obtained from the Alzheimer's Disease Neuroimaging Initiative (ADNI) database (adni.loni.usc.edu). As such, the investigators within the ADNI contributed to the design and implementation of ADNI and/or provided data but did not participate in analysis or writing of this report. Membership of the Alzheimer's Disease Neuroimaging Initiative (ADNI) can be found in the Acknowledgments section.

‡ Data used in the preparation of this article were obtained from the Genetic and Environmental Risk for Alzheimer's disease (GERAD1) Consortium. As such, the investigators within the GERAD1 consortia contributed to the design and implementation of GERAD1 and/or provided data but did not participate in analysis or writing of this report. Membership of the GERAD1 Consortium is provided in the Acknowledgments section.

Introduction

Altered lipid metabolism has been extensively implicated in late onset Alzheimer disease (LOAD) pathogenesis but the molecular basis of this relationship is not well understood. Cell biological studies support a critical involvement of lipid raft cholesterol in the modulation of A β precursor protein processing by β -secretase and γ -secretase resulting in altered A β production (reviewed in [1]). In the brain, apolipoprotein E (APOE) acts as the major cholesterol transporter, taken up into neurones via low density lipoprotein receptor (LDLR) family members. APOE is lipidated by the cholesterol transporter ABCA1 in astrocytes and its correct lipidation is necessary for binding and clearance of A β from the brain [2]. Additionally, APOE is a crucial regulator of triglyceride metabolism throughout the body [3].

In addition to the APOE gene, many of the LOAD susceptibility loci identified through genome wide association (GWA) studies and meta-analyses are also involved in lipid metabolism [4–6]. For example, CLU, or APOJ, is the second main lipoprotein in the brain after APOE; PICALM and BIN1 are implicated in receptor mediated endocytosis; and ABCA7 is involved in the efflux of lipids from cells to lipoproteins.

Epidemiological studies have shown associations between high cholesterol levels in midlife and LOAD risk [7–9], and statins have been shown to have a protective effect against the development of dementia [10–12]. However contradictory results have also been reported, with other epidemiological studies reporting no association of lipid levels on LOAD risk [13,14] or a decline in cholesterol levels before the onset of dementia [12,15] and randomized control trials overall finding no benefit of statin treatment [16–19].

The aim of this study was to examine whether genetic predisposition to increased blood cholesterol and triglyceride levels (i.e., dyslipidemia) plays an aetiological role in LOAD.

Consequently genetic risk variants, which affect lipid metabolism, would influence risk of LOAD through changes in lipid levels.

This is the first genetic study, to our knowledge, to investigate the causal nature of the relationship between lipid dysregulation and LOAD using such an approach, the results of which have the potential for public health interventions.

Methods

Ethical approval was obtained for all cohorts in the corresponding centres.

We have employed a Mendelian randomization approach (Figure 1), which uses the principle that the random meiotic assortment of genotypes is independent of confounding non-genetic factors or disease processes.

Since the effects of individual loci identified through GWA studies and meta-analyses are small, we examined whether genotype risk scores (GRSs), based on the joint additive effect of 157 well-established independent loci involved in lipid metabolism ($p < 5 \times 10^{-8}$) in a recent GWA study and meta-analysis by Willer and colleagues [20] of 188,577 participants, influence LOAD, in a sample of 10,578 participants, comprising 3,914 patients with LOAD (cases), 1,675 older individuals without LOAD, and 4,989 individuals from the general population. We analysed GRS for the phenotypes blood high-density lipoprotein cholesterol (HDL-c), plasma low-density lipoprotein cholesterol (LDL-c), total plasma cholesterol (TC), and plasma triglycerides (TG).

Study Design and Participants

This study utilized data from participants from three independent study groups composed of six GWA studies. All individuals included in this study have provided written informed consent.

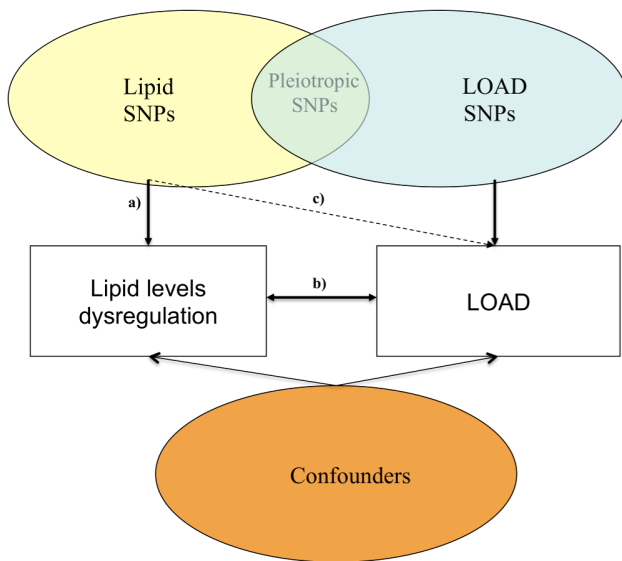


Figure 1. Possible mechanisms through which susceptibility genes act on lipid blood levels and LOAD. (a) Relationship between lipid SNPs and altered blood lipid levels; (b) relationship between altered blood lipid levels and LOAD; and (c) relationship between SNPs associated with altered lipid levels and LOAD. doi:10.1371/journal.pmed.1001713.g001

The first group was the Medical Research Council (MRC)-Wellcome Trust Case Control Consortium (WTCCC2) group including 3,292 individuals with LOAD (cases), 1,223 older individuals without LOAD (controls), and 5,074 individuals from the general population (population controls), consisting of four cohorts: 3,216 cases and 1,165 controls from the GERAD1 cohort (Genetic and Environmental Risk for Alzheimer's disease) consortium [4] genotyped on the Illumina 610-quad chip; 18 LOAD cases and ten controls from the MRC Brain cohort, genotyped on the Illumina 666W-Quad chip; and 5,074 population controls from the WTCCC2 publicly available control cohorts (www.wtccc.org.uk/cc2/: the 1958 British Birth Cohort [WTCCC2 1958 BC] and UK Blood Service Collection [WTCCC2 National Blood Donors (NBS)]), genotyped on the Illumina 1.2M chip.

The second group was the Institute of Psychiatry Plus (IOP+) group including 450 individuals who were cases, and 365 individuals who were controls, from the AddNeuroMed (ANM) cohort (362 cases, 237 controls) [21], and individuals from the Dementia Case Register (88 cases and 128 controls). These groups were genotyped on the Illumina 610-Quad chip in two different batches and merged together (batch 1: 222 cases, 111 controls; batch 2: 228 cases and 254 controls). Additionally, batch 1 contained 99 and batch 2 contained 78 individuals with mild cognitive impairment (MCI).

The third group consisted of 330 individuals who were cases and 187 who were controls obtained from the Alzheimer's Disease Neuroimaging Initiative (ADNI) database (adni.loni.usc.edu), genotyped on the Illumina 610-Quad chip.

Further details on all groups and cohorts are found in Text S1.

All individuals contributing data for this study were white. All individuals with LOAD (cases) met criteria for either probable (NINCDS-AD/DA, DSM-IV) or definite (CERAD) AD [22]. All non-population individuals who were controls were screened for dementia using the MMSE or ADAS-cog, or were determined to be free from dementia at neuropathological examination or had a Braak score ≤ 2.5 . All individuals with LOAD (cases) had an age of

onset ≥ 60 years and controls were ≥ 60 years at examination. The 58BC individuals (population controls) were around 54 years at the age of collection and no age was available for the NBS cohort. Because genotype data were used from multiple sources, stringent quality control (QC) filters were applied since differential genotyping error rates between groups could result in spurious associations when the data are combined [23,24]. These filters were applied separately to each of these groups to remove poorly performing samples followed by SNP QC on each group. Prior to individual and SNP QC the MRC brain cohort was merged with the GERAD1 cohort after removing symmetric SNPs and flipping SNPs with opposite strands (from now on referred to as the MRC cohort).

GWA Quality Control

Individual QC filters in the MRC, WTCCC2 58C, WTCCC2 NBS, IOP+, and ADNI datasets were applied using tools implemented in PLINK [25]. QC for the IOP+ group took place separately for the two different batches.

Briefly, we excluded individuals with (a) gender mismatches ($M > 0.8$, male; $F < 0.2$, female rule in PLINK; (b) an individual call rate $\leq 98\%$; (c) individuals with autosomal heterozygosity outside ± 4 standard deviation (SD) of the mean heterozygosity; and (d) duplicates and cryptically related by calculating identity by descent (IBD) estimates for all possible pairs of individuals in PLINK and removing one of each pair with an IBD estimate ≥ 0.1875 (the level expected for second cousins). Each of the five datasets were then merged with genotypes from 210 unrelated European (CEU), Asian (CHB and JPT), and Yoruban (YRI) samples from the HapMap project (www.hapmap.org). Following removal of SNPs in extensive regions of linkage disequilibrium and pruning of SNPs if any pair within a 50-SNP window had $r^2 > 0.2$, principal components analysis (PCA) as implemented in SMARTPCA [26] was used to infer continuous axes of genetic variation. Eigenvectors were calculated on the basis of the linkage disequilibrium (LD)-pruned subsets of each of the merged datasets to identify and then remove individuals of divergent ancestry displayed by plotting the first two principal components and using K-means clustering.

EIGENSOFTplus [27] was then applied to each of the datasets to additionally correct for population substructure, and genetic outliers defined as individuals whose ancestry is at least 6 SDs from the mean on one of the top ten axes of variation were removed. Four principal components explained most of the variation in the IOP+ and ADNI datasets and were extracted in order to be used as covariates in further analyses. Since the MRC and WTCCC2 datasets were merged at a later stage, extraction eigenvectors took place after sample merging.

SNP Quality Control

Because of unresolved genotype-calling issues with a proportion of SNPs on the sex chromosomes in the 610 cohort, only autosomal SNPs were included in SNP QC for all cohorts. Briefly SNP QC took place (a) including SNPs with $MAF > 1\%$; (b) including SNPs with missingness $< 3\%$ if $MAF \geq 0.05$ and SNPs with missingness $< 1\%$ if $MAF < 0.05$, and (c) excluding SNPs with $HWE p \leq 1 \times 10^{-4}$ in controls.

Imputation

Since some of the SNPs to be used in this study were not included on the Illumina platform or failed QC, imputation took place using IMPUTE_2.2.2 [28] and the 1000G phase1 integrated reference panel (April 2012, National Center for Biotechnology Information [NCBI] build 37) (Text S1).

Final QC Steps

The MRC dataset was then merged together with the WTCCC2 58C and WTCCC2 NBS datasets and the two IOP+ batches were also merged together. Symmetric SNPs were excluded and PLINK was used to identify incorrect strand assignment by utilizing LD patterns and exclude SNPs where the strand may have been incorrectly assigned between the three datasets. The merged datasets underwent an additional round of individual QC as described above and EIGENSOFTplus was applied to correct for population substructure as described. Four principal components explained most of the variation in the data and were extracted to be used as covariates in further analyses. Final QC resulted in 3,234 individuals with LOAD (cases), 1,175 individuals who were controls, and 4,989 individuals who were population controls from the MRC-WTCCC2 group ($n = 9,398$); 350 individuals with LOAD (cases) and 313 individuals who were controls from IOP+ group ($n = 663$); and 330 individuals with LOAD (cases) and 187 individuals who were controls from the ADNI group ($n = 517$), a total of 10,578 individuals included in all analyses.

Outcomes

The main outcome of the study was LOAD status (dichotomous) in the 10,578 individuals included in analyses with available imputed data.

A total of 227 individuals with LOAD (cases) and 196 individuals who were controls of the ANM cohort of the IOP+ group had HDL-c, LDL-c, TC, and TG serum levels (mmol/l) available. Additionally, lipid serum data were also available for 127 individuals with MCI from the ANM cohort who had undergone GWA/imputation together with LOAD cases and controls of the ANM cohort.

Genotype Risk Score Construction

Genotype scores were calculated for each of the four lipid phenotypes (TC, LDL-c, HDL-c, and TG) using the SNPs at 157 independent loci associated with plasma lipids at ($p < 5 \times 10^{-8}$) as reported by Willer and colleagues [20]. To avoid any spurious associations the rs4420638 SNP within the APOE locus was excluded from further analyses and we used SNAP [29] to investigate linkage disequilibrium patterns between the blood lipid SNPs and SNPs associated with LOAD in the latest LOAD meta-analysis finding no significant linkage disequilibrium ($r^2 < 0.2$). We also excluded SNP rs581080 in the TTC39B locus, SNP rs9411489 in the ABO locus, and SNP rs3177928 in the human leukocyte antigen (HLA) locus because they failed genotyping/imputation QC and we could not find any successfully genotyped/imputed SNPs with $r^2 > 0.8$ to use as proxies. We initially constructed a GRS that included all SNPs associated with each target lipid trait at a pre-specified p -value threshold of $p < 5 \times 10^{-8}$ (full score); we therefore used 69 HDL-c SNPs, 55 LDL-c SNPs, 40 TG SNPs, and 70 TC SNPs for the construction of the respective full score. Since one of the prerequisites for a Mendelian randomization study is that there must not be pleiotropic effects of the genetic variants of interest and since there is a considerable overlap of SNPs associated with each trait (Figure S1), a second score was constructed using SNPs exclusively associated with the target lipid trait at a p -value threshold of $p < 5 \times 10^{-8}$ (trait specific score); we therefore used 45 HDL-c SNPs, nine LDL-c SNPs, 18 TG SNPs, and 18 TC SNPs for the construction of the respective trait specific score.

Full and trait specific risk scores (GRSs) were constructed in PLINK using the `-score` option [25] and assuming that each SNP in the panel acts independently and contributes to the risk of LOAD in an additive manner.

The weighted risk scores were constructed by multiplying each SNP by its relative effect size (β -coefficient) obtained from Willer and colleagues [20] and selecting as the “risk” allele that was associated with increased LDL-c, TG, and TC levels and decreased HDL-c levels.

We summed the products of each score and divided them by the number of non-missing SNPs genotyped/imputed for each individual, creating a score per non missing SNP. The GRSs were further standardized and results are expressed per 1 SD of each GRS.

Individuals missing $\geq 5\%$ of the SNPs for each GRS were excluded. Table S1 presents the details of the SNPs used for the construction of the GRSs.

Statistical Analyses

All analyses were performed in STATA 12 (Stata Statistical Software: Release 12, StataCorp LP). Power calculations were performed using QUANTO (<http://hydra.usc.edu>) to estimate the power of this study.

Association of Serum Lipid Levels with Each Lipid Genotype Risk Score and LOAD Status

Serum lipid levels (mmol/l) available for the ANM subset were converted to mg/dl by multiplying HDL-c, LDL-c, and TC by 38.67 and TG by 88.57. Each lipid was regressed against age, age-squared, and gender, and the residuals were inverse normal transformed.

Linear regression analyses were performed using the inverse normal lipid traits values as the dependent variable and the respective GRS as the independent variable (first stage equations) using the 227 LOAD cases and 196 elderly controls from the ANM study. To increase power we also included the 127 individuals with MCI. These first stage equations were later used to weigh the association of each GRS with LOAD status. We also used logistic regression analyses to investigate the association of the inverse normal transformed lipid traits levels with LOAD status in the ANM cohort.

Instrumental Variable Analyses

We used instrumental variable (IV) estimators to quantify the strength of the causal association between lipid traits and LOAD. We used two different procedures for our IV analysis.

Instrumental variable analysis using individual level data. For the main analysis of this study we investigated the association of each of the four lipid trait GRSs with LOAD. Logistic regression analyses were used to test for the association of each GRS with LOAD separately in each group adjusting for the first four PCS extracted during QC for each group. It was not possible to include a covariate for each chip for the MRC-WTCCC2 group as only population controls were genotyped on the 1.2 M chip. Similarly, it was not possible to include a covariate for each of the four cohorts of the MRC-WTCCC2 group, as the WTCCC2 groups included only population controls. The IOP+ cohort was adjusted for an additional covariate denoting genotyping batch. The instrumental variable estimate for each lipid trait was obtained by dividing the LOAD-GRS log OR estimate of each group (second stage equation) with the respective beta estimate of the linear regression of each lipid trait against the respective GRS (lipid trait-GRS) from the 550 individuals of the ANM study with serum lipid data available (first stage equation). To take into consideration the uncertainty in both the LOAD-GRS and the lipid trait-GRS associations we used the delta method to estimate the standard errors of the instrumental

Table 1. Characteristics of the participants in the MRC-WTCCC2, the IOP+, and ADNI study groups who passed GWA and imputation QC, broken down by cohort and by disease status.

Group	MRC-WTCCC2		IOP+		ADNI	
	Total	MRC	WTCCC2 58BC	Total	ANIM	ADNI
Cohort		illumina 610	illumina 1.2M	illumina 610		
LOAD cases						
n	3,234	3,234	N/A	350	285	330
Percent female	64	64	N/A	61	65	57
Mean age at onset (SD)	73 (9)	73 (9)	N/A	73 (7)	73 (7)	75 (7)
Mean age at baseline (SD)	80 (8)	80 (8)	N/A	76 (7)	76 (7)	76 (7)
Mean age at death (SD) ^a	84 (8)	84 (8)	N/A	NA	NA	NA
Mean HDL-c (SD) mg/dl ^b	N/A	N/A	N/A	63.1 (16)	63.1 (16)	NA
Mean LDL-c (SD) mg/dl ^b	N/A	N/A	N/A	127.0 (37)	127.0 (37)	NA
Mean TG (SD) mg/dl ^b	N/A	N/A	N/A	126.2 (48)	126.2 (48)	NA
Mean TC (SD) mg/dl ^b	N/A	N/A	N/A	215.1 (43)	215.1 (43)	NA
Controls						
n	6,164	1,175	2,602 ^c	313	226	187
Percent female	52	62	49	60	56	54
Mean age at baseline (SD)	63 (6)	77 (7)	60 (0)	74 (7)	73 (7)	76 (6)
Mean Age at death (SD) ^a	84 (8)	84 (8)	N/A	NA	NA	NA
Mean HDL-c (SD) mg/dl ^b	N/A	N/A	N/A	60.9 (16)	60.9 (16)	NA
Mean LDL-c (SD) mg/dl ^b	N/A	N/A	N/A	123.3 (33)	123.3 (33)	NA
Mean TG (SD) mg/dl ^b	N/A	N/A	N/A	136.2 (59)	136.2 (59)	NA
Mean TC (SD) mg/dl ^b	N/A	N/A	N/A	211.1 (41)	211.1 (41)	NA

^aAvailable only for 603 MRC LOAD cases and 101 LOAD controls.

^bAvailable for 227 ANM LOAD cases and 196 ANM elderly controls; serum lipid levels (mmol/l) were converted to mg/dl by multiplying HDL-c, LDL-c, and TC by 38.67 and TG by 88.57.

^cPopulation controls.
doi:10.1371/journal.pmed.1001713.t001

variable ratio estimates [30]. The resulting estimates were pooled together using inverse-variance fixed effects meta-analysis. We acknowledge that our instrumental variable (lipid trait-GRS associations) is calculated using only 550 participants from the ANM study. A recent study [31] has demonstrated that generating exposure data (such as lipid trait-GRS data) for a subset of participants rather than all participants in the study or from participants who are obtained from independent non-overlapping samples drawn from the same population does not substantially decrease power when the instrumental variable is relatively strong. An instrumental variable is considered strong when the first stage equation $R^2 \approx 2.5\%$ and, as demonstrated by Pierce and Burgess [31], full power is achieved for an $R^2 \geq 1.5\%$ with exposure data for $\sim 20\%$ of the total sample. Additionally, loss in power is very small when the subsample/independent sample is 5%–10% of the total study sample. In our study groups, exposure data for the lipid trait-GRS association is available for 6% of the sample size of the MRC-WTCCC2 group (independent sample), for 83% of the IOP+ group (sub-sample), and for more participants than those in the ADNI group (independent sample). We have therefore used the instrumental variable estimate when the first stage equation for the four traits was $R^2 \geq 1.5\%$.

Instrumental variable analysis using summary data. A second instrumental variable approach was used in order to verify findings of the instrumental variable approach using individual level data and to be used alternatively when the lipid trait-GRS first stage association was $R^2 < 1.5\%$. This approach was based on calculating the instrumental variable estimate using summary data approach, which has been shown to be similarly efficient to individual level data analyses [32]. Logistic regression analyses were used to test for the association of each lipid trait SNP with LOAD separately in each group adjusting for covariates as detailed above. As in the case of the GRS, we selected as the “risk” allele that which was associated with increased LDL-c, TG, and TC levels and decreased HDL-c levels. The instrumental variable estimate from summary data for each lipid trait was then obtained by summing the log OR of the individual logistic regression analyses of all SNPs associated with each plasma lipid trait and weighing this with the summary of the estimates of each SNP with the respective trait obtained from Willer and colleagues [20] in an inverse-variance weighted meta-analysis. The delta method was used to approximate the standard error [32].

Instrumental variable analysis was conducted using both full and trait specific scores.

Additional Analyses

Additional analyses were performed excluding the population controls from the MRC-WTCCC2 group and adjusting for age at baseline visit, gender, and number of APOE $\epsilon 4$ alleles (Text S1).

Results

The sample characteristics are presented in Table 1. SNPs details, including their minor allele frequency and association with LOAD in each group, are presented in Table S1.

Association of Blood Lipid Levels with the GRS and with LOAD in the ANM Cohort

The four full scores strongly correlated with the corresponding lipid trait phenotype; however, we observed no correlation between the trait specific scores and the corresponding lipid traits (Table 2) in the ANM individuals. We additionally observed no association between measured lipid levels and LOAD (Table 3) for this cohort.

Expected Effect Size and Power of the Study

Using two epidemiological studies that have shown positive associations between cholesterol levels and LOAD and the observed associations between the weighted TC GRS and TC levels in the ANM sample, we estimated the expected effect sizes (Figure 1) and the power of our study. According to Whitmer and colleagues [7] midlife high TC levels (≥ 240 mg/dl) were associated with increased LOAD risk, hazard ratio [HR] = 1.42 (95% CI 1.22–1.66), after adjusting for other cardiovascular risk factors and, according to Kivipelto and colleagues [8], high TC levels (≥ 6.5 mmol/l, i.e., 251.35 mg/dl) were associated with increased LOAD risk, OR = 2.8 (95% CI 1.2–6.7) (Figure 1b). We dichotomised serum TC levels in the ANM subset according to these two studies and estimated their association with the TC GRS. The OR of high TC levels in our sample using the Whitmer and colleagues [7] cut-off (≥ 6.2 mmol/l) was OR = 1.679 (95% CI 1.35–2.10, $p = 4.01 \times 10^{-6}$) and the OR of high TC levels using Kivipelto and colleagues [8] cut-off (≥ 6.5 mmol/l) was OR = 1.71 (95% CI 1.34–2.20, $p = 1.92 \times 10^{-5}$) per GRS SD (Figure 1a) for the full GRS. This means that, if the weighted TC GRS is associated with LOAD through its association with TC levels we would expect the association of the GRS with LOAD (Figure 1c) to be between OR = 1.19 (95% CI 1.06–1.46) and OR = 1.73 (95% CI 1.06–4.48). Our sample size of $>10,000$ participants and the GRS approach we employed gave us $>99\%$ power to capture these ORs.

Association of the Genotype Risk Scores with LOAD Status

Instrumental variable analysis for the four full GRSs was performed using individual level data since the association of the four full GRSs with the corresponding lipid produced $R^2 > 0.015$ (first stage equation). We found no association between any lipid traits and LOAD status (Figure 2; Table S2). Instrumental variable results for the four full GRSs using summary data based on the plasma lipid study by Willer and colleagues [20] were identical (Figure S2; Table S2).

Since we found no association between the four trait specific GRSs and the respective serum lipid (Table 2), instrumental variable analysis for the trait specific scores was performed using summary data only from Willer et al [20]. We observed a weak positive association between HDL-c and LOAD status when using the trait specific score and no associations for the rest of the traits (Figure 2; Table S2). Results of the logistic regression analyses for each of the four full and trait specific GRSs against LOAD status (second stage equations) are presented in Table 4.

Excluding population controls and adjusting for covariates produced similar results for all analyses (Tables 5 and 6).

Discussion

The aim of this study was to dissect the causal nature of the association between blood lipid levels and LOAD and to investigate whether genetic predisposition to dyslipidemia plays an aetiological role in LOAD. To achieve this we used a Mendelian randomization approach and we examined the causal role of HDL-c, LDL-c, TG, and TC in LOAD risk by exploring the association of GRS based on the additive joint effect of 157 well established genetic loci [20] that influence plasma HDL-c, LDL-c, TC, and TG levels with LOAD in a sample of $>10,000$ participants. Full GRSs were constructed including all SNPs associated with the respective trait at $p < 5 \times 10^{-8}$. Instrumental variable analysis took place using individual level data and calculating the instrumental variable estimate by dividing the

Table 2. Association of the four full and trait specific GRSs with the respective serum levels in participants of the ANM cohort.

Trait	GRS (<i>n</i> SNPs)	ANM (<i>n</i> = 550) Respective Serum Lipid				
		beta	95% CI	<i>p</i> -Value	R ²	F (1,548)
HDL-C	Full (69 SNPs)	0.210	0.12–0.30	3.14E–06	4.19%	22.2
	Trait specific (45 SNPs)	–0.016	–0.11 to 0.07	7.30E–01	0.02%	0.1
LDL-C	Full (55 SNPs)	0.136	0.05–0.22	2.19E–03	1.83%	9.5
	Trait specific (9 SNPs)	–0.051	–0.14 to 0.04	2.45E–01	0.28%	1.4
TG	Full (40 SNPs)	0.208	0.12–0.29	2.08E–06	4.34%	23.1
	Trait specific (16 SNPs)	0.072	–0.02 to 0.16	1.15E–01	0.50%	2.5
TC	Full (70 SNPs)	0.191	0.10–0.28	1.67E–05	3.59%	18.9
	Trait specific (18 SNPs)	0.054	–0.03 to 0.14	2.16E–01	0.31%	1.5

beta represents the association of each GRS with 1 unit increase in blood lipid levels. These associations include 127 MCI individuals.
doi:10.1371/journal.pmed.1001713.t002

LOAD-GRS estimate for each lipid trait with the respective lipid trait-GRS estimate for each study and pooling them together using meta-analysis, when the association of the lipid trait-GRS was $R^2 > 1.5\%$. Instrumental variable analysis using summary data was used to verify individual level results and when the lipid trait-GRS was $R^2 < 1.5\%$. Since one of the prerequisites for a Mendelian randomization study is that there must not be pleiotropic effects of the genetic variants of interest, we additionally attempted to dissect these associations further and we constructed trait specific GRSs including SNPs associated exclusively with each lipid phenotype.

We found no association between any of the full GRSs and LOAD risk. Our results suggest that genetically raised HDL-c, LDL-c, TG, and TC levels are not causally associated with LOAD risk. Results for the trait specific scores were similar. Although we observed a positive association between the HDL-C GRS and LOAD we must acknowledge the large standard error of the association and that the trait specific score is a weaker instrument. The 157 loci account approximately for 12%–14% of the variation of each trait [20]; however, there are no published results of the trait variance explained by SNPs exclusively associated with each trait. In our study we observed a clear difference between the full GRS ($R^2 = 1.8\%$ – 4.3%) and the trait specific GRS ($R^2 \leq 0.5\%$) highlighting that although the trait specific score had increased specificity for the target lipid, it is less statistically powerful and consequently less biologically interpretable. Finally, excluding population controls and adjusting for covariates produced similar results.

Clinical Relevance

Altered lipid metabolism has been extensively implicated in AD pathogenesis through cell biological, epidemiological, and genetic studies, but the molecular mechanisms linking cholesterol and risk for AD are still not well understood. This relationship between AD and altered lipid metabolism is of considerable interest for both basic scientists and clinicians. This is the first study, to our knowledge, to model the joint additive effect of lipid associated loci on LOAD risk using a Mendelian randomization approach. Therefore this article contributes considerably to research on the role of lipids in risk for LOAD and has potential for suggesting novel therapeutic and public health interventions.

Strengths and Limitations

One of the strengths of this study is that genetic variants combined into a GRS to test for a complex association between

metabolic traits and LOAD in a very large sample using Mendelian randomization were used. The additive effects of these SNPs have been found to be highly associated with the extremes of the distribution for each trait. For example, in a meta-analysis by Teslovich and colleagues [33] using a smaller number of lipid associated loci ($n = 95$), the OR of high plasma LDL-c (mean 219 mg/dl) against low plasma LDL-c (mean 110 (mg/dl) for individuals on the top LDL-c GRS quartile was 12.5 (95% CI 9.1–17.5, $p = 1 \times 10^{-14}$). Here, in the subset with serum lipid levels we observed strong associations between all of the GRSs and the corresponding serum lipid levels, which are similar to those previously published for plasma lipid levels. Using two epidemiological studies that have shown positive associations between HR = 1.45 and OR = 2.8 (the majority of positive associations reported are OR/HR between 2 to 3) and the association between TC GRS and abnormally high serum TC levels in the ANM cohort, the expected effect sizes in this study were estimated to be between OR = 1.20 and OR = 1.70 per GRS SD giving us >99% power to capture these associations. Using individual level data and summary data when appropriate, we calculated instrumental variable estimators assessing the association of the GRS with LOAD status per increase in 1 lipid unit.

Mendelian randomization studies overcome biases found in non-genetic studies such as confounding and reverse causation. For example, epidemiological studies investigating the association of lipid levels and LOAD can be biased from confounding factors that may affect lipid levels, from the co-occurrence of other conditions that may be associated with LOAD such as impaired

Table 3. Association of serum lipid levels with LOAD in participants of the ANM cohort.

Serum Lipid Levels	ANM (<i>n</i> = 423)		
	OR	95% CI	<i>p</i> -Value
HDL-C	1.045	0.86–1.28	0.659
LDL-C	1.105	0.90–1.35	0.324
TG	0.870	0.71–1.07	0.182
TC	1.071	0.88–1.31	0.505

OR represents the association of 1 unit of each serum lipid with LOAD status.
doi:10.1371/journal.pmed.1001713.t003

Association with LOAD per 1 unit increase in lipid

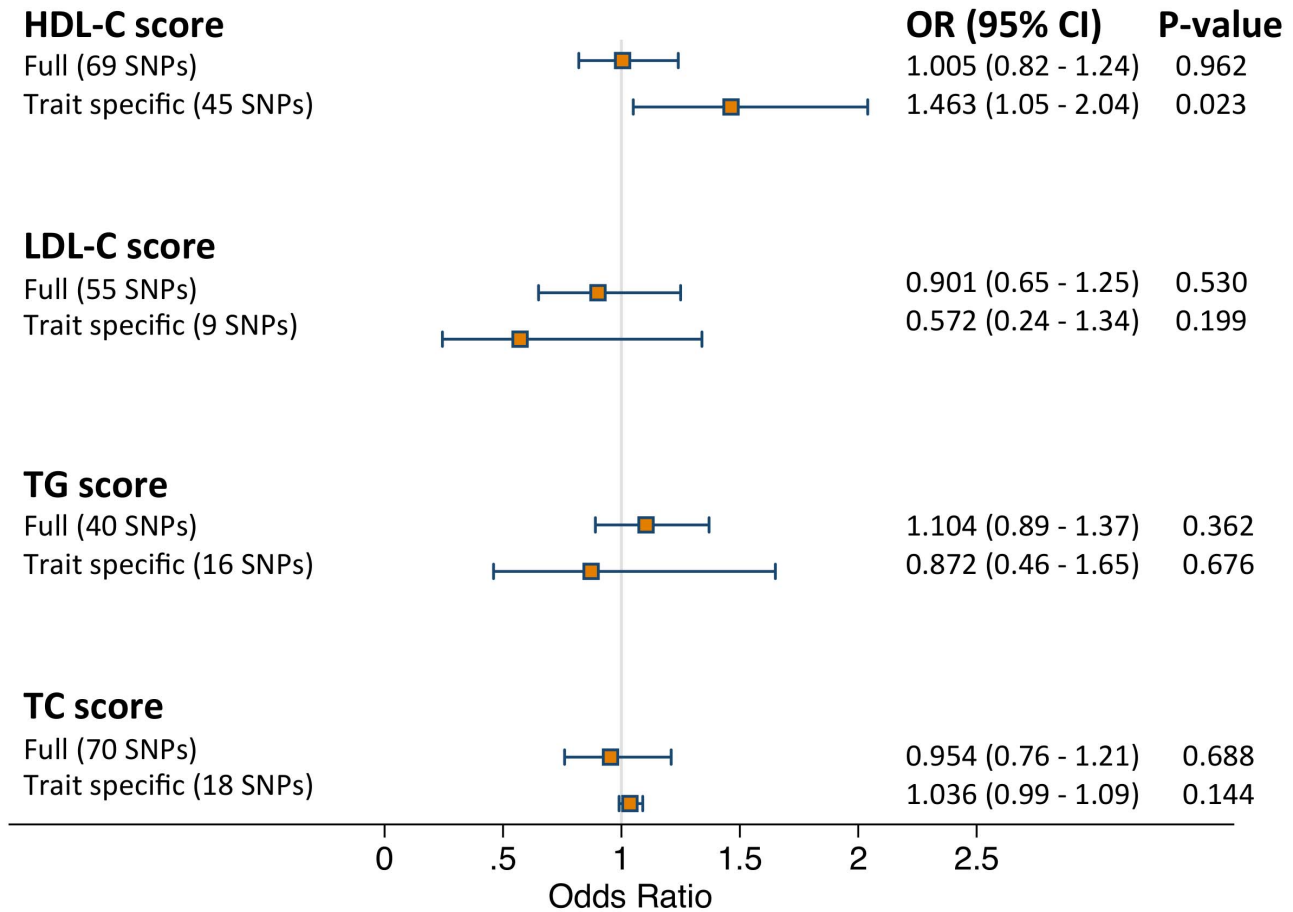


Figure 2. Results of the meta-analysis pooled estimates for the effect of a 1 unit increase in blood lipid traits on LOAD risk using instrumental variable analysis (n= 10,578). GRSs were calculated using all independent SNPs associated with each trait (full score) and SNPs associated exclusively with each trait (trait specific score). Full score estimates were derived by weighing the association between GRS and LOAD for each dataset with the association between GRS and blood lipid trait and pooling them together using inverse-variance fixed effects meta-analysis and by using the summary method. Restricted score estimates were derived by using the summary method since the trait specific score and blood lipid estimate was a weak instrument. See Methods for further details. doi:10.1371/journal.pmed.1001713.g002

glucose metabolism and obesity, from the type of study performed, from the fact that the majority of the studies have only used total cholesterol measurements, from the different blood lipid cut-offs used for analysis (or their use as continuous variable), and, most importantly, from the different timing of lipid measurements in relation to age and disease onset. For example many studies have been conducted late in the life of the participant when substantial AD neuropathology may already be present and it is therefore difficult to determine whether any changes in cholesterol levels are increasing risk for disease or, conversely, whether the pathophysiological changes that accompany AD alter cholesterol levels (reviewed in [34]). Interestingly, it has been shown that total cholesterol decreases with age [35], which may reflect ongoing disease processes and it has been suggested that as blood pressure and body mass index have been shown to begin to decline several years before dementia, the same may occur for LDL-c levels, supporting a role for reverse causation. Indeed, for males in the Honolulu-Asia study comparing total cholesterol levels across 26

years, an accelerated pre-clinical decline in cholesterol was observed for those who subsequently developed AD [15]. A recent study examined serum cholesterol levels and cerebral Aβ measured with carbon C11-labeled Pittsburgh Compound B (PIB) and found a negative association between HDL-c and global PIB index and a positive association between LDL-c and global PIB index [36]. Although these findings are consistent with some epidemiological and clinical studies, the authors acknowledge that the measurements are cross-sectional, obtained late in life, and from a high vascular risk population; hence these associations could be confounded through reverse causation as other cross sectional studies. Genetic studies, however, overcome these issues since they are more likely to reflect lifelong exposure to altered circulating blood lipid levels.

Our study, similar to other Mendelian randomization studies, suffers from potential limitations [37–39], which are related to the validity of the assumptions underlying these studies. The main assumptions are: (a) independence between instrument and

Table 4. Association of lipid genotype risk scores with LOAD per lipid score SD using individual level data (stage 1 equation).

Trait	GRS (n SNPs)	MRC-WTCCC2 (n=9,398 ^a)			IOP+ (n=663 ^a)			ADNI (n=517 ^a)			MRC-WTCCC2, IOP+, and ADNI Meta-analysis (n=10,578 ^a)			
		OR	95% CI	p-Value	OR	95% CI	p-Value	OR	95% CI	p-Value	OR	95% CI	p-Value	Percent I ²
HDL-C	Full (69 SNPs)	0.989	0.94–1.04	0.631	1.098	0.93–1.29	0.262	1.091	0.90–1.33	0.387	1.001	0.96–1.05	0.962	10
	Trait specific (45 SNPs)	1.047	1.00–1.10	0.060	1.133	0.96–1.34	0.149	0.975	0.80–1.19	0.807	1.049	1.00–1.10	0.036	0
LDL-C	Full (55 SNPs)	0.971	0.93–1.02	0.223	1.037	0.88–1.22	0.664	1.193	0.98–1.45	0.078	0.986	0.94–1.03	0.530	55
	Trait specific (9 SNPs)	0.958	0.91–1.00	0.074	0.961	0.81–1.14	0.642	1.180	0.97–1.44	0.104	0.968	0.93–1.01	0.150	50
TG	Full (40 SNPs)	1.025	0.98–1.07	0.305	0.905	0.77–1.07	0.234	1.129	0.93–1.38	0.226	1.021	0.98–1.07	0.362	35
	Trait specific (16 SNPs)	0.981	0.94–1.02	0.420	1.021	0.87–1.20	0.808	1.079	0.88–1.32	0.464	0.988	0.95–1.03	0.597	0
TC	Full (70 SNPs)	0.982	0.94–1.03	0.460	0.992	0.84–1.18	0.929	1.149	0.95–1.40	0.164	0.991	0.95–1.04	0.688	14
	Trait specific (18 SNPs)	1.034	0.99–1.09	0.165	0.961	0.81–1.14	0.644	0.809	0.65–1.00	0.050	1.018	0.97–1.06	0.442	63

Scores were calculated using all independent SNPs associated with each trait (full) and SNPs associated exclusively with each trait (trait specific) for all datasets and pooled together using inverse-variance fixed effects meta-analysis. Since there was some evidence for between study heterogeneity, random effects models were also tested but did not affect the meta-analysis results.

^aMaximum.

doi:10.1371/journal.pmed.1001713.t004

Table 5. Association of lipid genotype risk scores with LOAD per one unit increase in lipid levels excluding population controls from the MRC-WTCCC2 group.

Trait	GRS (n SNPs)	Score Calculation Method	MRC (n = 4,409 ^a)			IOP+ (n = 663 ^a)			ADNI (n = 517 ^a)			MRC, IOP+, and ADNI Meta-analysis (n = 5,589 ^a)			
			OR	95% CI	p-Value	OR	95% CI	p-Value	OR	95% CI	p-Value	OR	95% CI	p-Value	Percent I ²
HDL-C	Full (69 SNPs)	Individual level data	0.987	0.70–1.40	0.941	1.559	0.39–2.56	0.265	1.514	0.39–2.55	0.394	1.104	0.82–1.49	0.517	0
	Full (69 SNPs)	Summary data	0.992	0.75–1.31	0.959	1.411	0.76–2.62	0.280	1.399	0.66–2.95	0.384	1.085	0.85–1.38	0.508	0
	Trait specific (45 SNPs)		1.299	0.74–2.27	0.365	2.744	0.80–9.42	0.109	0.840	0.19–3.66	0.827	1.388	0.86–2.24	0.18	0
LDL-C	Full (55 SNPs)	Individual level data	0.623	0.36–1.07	0.088	1.309	0.24–4.22	0.677	3.652	0.24–4.22	0.077	0.840	0.53–1.34	0.465	65
	Full (55 SNPs)	Summary data	0.773	0.57–1.05	0.094	1.145	0.60–2.22	0.701	2.081	0.94–4.60	0.069	0.913	0.70–1.18	0.491	65
	Trait specific (9 SNPs)		0.840	0.20–3.45	0.82	0.401	0.02–11.07	0.604	27.220	0.60–12.42	0.090	1.089	0.32–3.73	0.892	38
TG	Full (40 SNPs)	Individual level data	0.910	0.64–1.29	0.600	0.619	0.39–2.58	0.236	1.795	0.39–2.58	0.228	0.992	0.68–1.25	0.600	31
	Full (40 SNPs)	Summary data	0.910	0.64–1.29	0.607	0.632	0.30–1.34	0.235	1.74	0.71–4.29	0.231	0.923	0.69–1.24	0.595	30
	Trait specific (16 SNPs)		0.839	0.29–2.44	0.761	1.395	0.13–14.84	0.795	3.194	0.187–54.4	0.430	1.043	0.42–2.61	0.928	0
TC	Full (70 SNPs)	Individual level data	0.768	0.52–1.13	0.181	0.961	0.36–2.78	0.935	2.066	0.35–2.78	0.165	0.882	0.63–1.23	0.451	37
	Full (79 SNPs)	Summary data	0.823	0.61–1.10	0.195	0.971	0.51–1.85	0.936	1.791	0.83–3.88	0.141	0.917	0.71–1.18	0.501	41
	Trait specific (18 SNPs)		2.301	0.86–6.20	0.099	0.800	0.10–7.26	0.853	0.127	0.01–1.78	0.126	1.035	0.99–1.09	0.151	60

Scores were calculated using all independent SNPs associated with each trait (full) and SNPs associated exclusively with each trait (trait specific) for all datasets and pooled together using inverse-variance fixed effects meta-analysis. Full allele scores were calculated using both raw genotype data and summary data. Trait specific allele scores were calculated using summary data only. Since there was some evidence for between study heterogeneity, random effects models were also tested but did not affect the meta-analysis results.

^aMaximum.

Table 6. Association of lipid genotype risk scores with LOAD per one unit increase in lipid levels after controlling for age at baseline visit, number of APOE e4 alleles, and gender.

Trait	GRS (n SNPs)	Score Calculation Method			MRC-WTCCC2 (n=9,398 ^a)			IOP+ (n=663 ^a)			ADNI (n=517 ^a)			MRC-WTCCC2, IOP+, and ADNI Meta-analysis (n=10,578 ^a)		
		OR	95% CI	p-Value	OR	95% CI	p-Value	OR	95% CI	p-Value	OR	95% CI	p-Value	OR	95% CI	p-Value
HDL-C	Full (69 SNPs)	0.855	0.59–1.25	0.418	3.298	1.28–8.50	0.014	1.533	0.54–4.32	0.419	1.073	0.77–1.45	0.678	70		
	Full (69 SNPs)	0.882	0.65–1.20	0.426	2.454	1.17–5.16	0.018	1.408	0.62–3.21	0.422	1.056	0.81–1.38	0.690	70		
	Trait specific (45 SNPs)	1.069	0.57–1.95	0.839	2.070	0.47–11.00	0.343	1.081	0.21–5.47	0.931	1.163	0.69–1.97	0.574	0		
LDL-C	Full (55 SNPs)	0.630	0.35–1.34	0.124	0.801	0.18–3.52	0.769	2.818	0.58–13.61	0.193	0.762	0.46–1.28	0.302	35		
	Full (55 SNPs)	0.783	0.57–1.08	0.138	1.834	0.39–1.97	0.766	1.834	0.76–4.43	0.179	0.868	0.65–1.15	0.328	65		
	Trait specific (9 SNPs)	0.540	0.12–2.47	0.435	0.020	0.001–1.05	0.060	16.270	0.22–1189	0.204	0.516	0.14–1.99	0.337	60		
TG	Full (40 SNPs)	0.981	0.67–1.45	0.922	0.430	0.16–1.13	0.086	2.085	0.72–6.08	0.178	0.955	0.68–1.34	0.790	55		
	Full (40 SNPs)	0.981	0.67–1.42	0.928	0.454	0.18–1.12	0.088	1.939	0.71–5.30	0.198	0.954	0.69–1.32	0.595	50		
	Trait specific (16 SNPs)	0.757	0.24–2.44	0.650	1.000	0.06–17.1	0.999	7.990	0.343–185	0.197	1.001	0.36–2.76	0.998	0		
TC	Full (70 SNPs)	0.733	0.48–1.12	0.148	1.038	0.35–3.45	0.946	1.708	0.55–5.34	0.357	0.835	0.58–1.21	0.340	14		
	Full (79 SNPs)	0.798	0.58–1.09	0.161	1.010	0.46–2.21	0.983	1.541	0.65–3.65	0.330	0.880	0.67–1.16	0.364	5		
	Trait specific (18 SNPs)	1.609	0.55–4.69	0.390	0.275	0.02–3.85	0.342	0.090	0.01–1.60	0.100	0.951	0.37–2.43	0.917	55		

Age for the WTCCC2 population controls was set to 60 years (See Methods). Scores were calculated using all independent SNPs associated with each trait (full) and SNPs associated exclusively with each trait (trait specific) for all datasets and pooled together using inverse-variance fixed effects meta-analysis. Full allele scores were calculated using both raw genotype data and summary data. Trait specific allele scores were calculated using summary data only. Since there was some evidence for between study heterogeneity, random effects models were also tested but did not affect the meta-analysis results.

^aMaximum.

doi:10.1371/journal.pmed.1001713.t006

covariates, i.e., that the tested genotypes in the GRS are randomized; (b) a reliable association between the GRS and the intermediate phenotype (first stage equation), and (c) lack of pleiotropy. Although we know that there is no violation of the second assumption particularly in the case of the full GRS, possible violations of the first and third assumptions include population stratification, pleiotropic effects, canalization, epigenetic effects, and the confounding effect of genes associated with confounders and outcomes in high linkage disequilibrium with genotypes. Population stratification is not present in the current study since a white population has been used and allele frequencies between the different cohorts are very similar. Additionally, pleiotropy and the potentially confounding effects of linkage disequilibrium are likely avoided owing to the use of multiple genetic variants in the GRS and the use of the trait specific scores. Nevertheless, canalization cannot be completely excluded as a limitation of the present study.

Another limitation of our study, linked also to Mendelian randomization assumption two, is that that serum lipid levels were only available for a small proportion of the sample (227 LOAD cases, 196 controls and 127 MCI from the ANM cohort). We used the 550 participants from ANM dataset to calculate the GRS-lipid trait association (first stage equation) for the individual level data instrumental variable analysis in order to derive these estimates from a sample nested within our total sample. We also used the 550 participants from the ANM cohort in order to infer the expected association between the GRS with LOAD in our power analysis, since we could not find any available large published studies where the same cut-off for cholesterol levels was used when investigating its association with GRS and with LOAD. We have to additionally acknowledge that since these estimates are derived from the ANM cohort they may not apply to the other cohorts.

Although we acknowledge the small number of participants, all the full GRSs were strongly associated with the respective lipid with $R^2 = 1.8\% - 4.3\%$ (strong instruments) and it is shown [31] that full power is achieved for an $R^2 > 1.5\%$ with exposure data for $\sim 20\%$ of the total sample/independent sample and with very small loss in power when the subsample/independent sample is $5\% - 10\%$ of the total study sample. Moreover, we acknowledge that our lipid measurements for the ANM cohort come from serum as opposed to the Willer and colleagues [20] study which was based on plasma lipid measurements. Consequently, the association between the GRS and lipids and the instrumental variable analysis using individual level data are based on lipid serum data. On the other hand, our instrumental variable analysis using summary data is based on plasma lipid data from Willer and colleagues [20]. The association between the GRS and serum lipid levels in our sample closely reflect those for plasma in published studies (for example, Teslovich and colleagues [33]). Additionally, the suitability of our instruments when $R^2 > 1.5\%$ was verified by performing instrumental variable analysis using summary data.

Another limitation was that although no association was observed between the GRS and age in cases or controls suggesting no survival effect, cases were on average older than controls. We also included $\sim 6,000$ population controls, $\sim 3,000$ of whom were < 60 years and could therefore develop AD in the future, and $\sim 3,000$ of this group had no age or cognitive level information. Additionally, samples from the WTCCC2 1958 Birth Cohort were also included in the Global Lipids Consortium study. However, when we repeated analyses excluding the population controls, results were essentially identical. A strength of our large case control study is that diagnosis of AD is standardised and performed under a research setting and for a proportion of cases

and cognitively normal elderly controls diagnosis was confirmed by pathological examination. We must also take into consideration that case-control studies have the potential for selection or ascertainment biases in the inclusion of cases with dyslipidemia associated problems (e.g., cardiovascular disease [CVD]). However, CVD co-morbidity was not excluded here, which would result in an artificially healthy case group with beneficial lipid-influencing genetic profiles. Information on history of myocardial infarction was available only for 643 MRC participants (521 cases and 132 controls).

Generalizability

The relationship between lipid metabolism and LOAD is likely to be complex. The blood-brain-barrier prevents any efficient exchange between brain and blood lipoproteins, and the majority of brain cholesterol is derived from *de novo* biosynthesis, rather than from blood LDL-c [40]; cholesterol levels in the periphery may therefore not reflect brain cholesterol levels. Additionally, although excess free cholesterol in brain is metabolised into cholesteryl-esters, it is also converted into 24(S)-hydroxycholesterol, an oxidized metabolite of cholesterol, which crosses the blood-brain-barrier and reaches the periphery. It has been shown that during the early stages of AD, blood 24S-hydroxycholesterol concentrations, which reflect TC concentrations in the brain, are high in cerebrospinal fluid and in peripheral circulation, potentially reflecting increased cholesterol turnover in the brain but fall in later stages of AD suggesting a lower rate of cholesterol metabolism as disease progresses (reviewed in [41]).

Conclusions

There is no dispute over the involvement of lipid metabolism in the pathophysiology of LOAD. However, the results of our study do not support a causal role for genetically increased plasma cholesterol in LOAD and suggest that epidemiological associations between peripheral lipids and LOAD may be confounded by secondary disease processes. Future studies should focus on large LOAD datasets with longitudinal peripheral lipid measures and other markers of lipid metabolism.

Supporting Information

Figure S1 Venn diagram illustrating the overlap of SNPs associated with the four lipid traits used in this study. The rs4420638 SNP in the APOE locus, the SNP rs581080 in the TTC39B locus, the SNP rs9411489 in the ABO locus, and the SNP rs3177928 in the HLA locus are excluded. (TIF)

Figure S2 Results of the meta-analysis pooled estimates for the effect of a 1unit increase in blood lipid traits on LOAD risk using instrumental variable analysis (full genotype risk scores), using the summary method ($n = 10,578^*$). Estimates were derived by weighing the association between GRS and LOAD for each dataset with the association between GRS and blood lipid using the summary method. See Methods for further details. *Maximum. (TIF)

Table S1 Information on SNPs used for the construction of the genotype risk scores in this study. SNPs used for the four GRSs constructed in this study and their association with the respective plasma levels in Willer and colleagues [20], as well as their association with LOAD in the three groups in this study. Risk

allele refers to the allele associated with increasing LDL-c, TC, and TG levels and decreasing HDL-c levels. Analyses are performed with respect to the risk allele. Risk allele frequency refers to the frequency of the risk allele used in the analysis. For the four full GRSs all SNPs associated with the specific phenotype at $p < 5 \times 10^{-8}$ were used. For the trait specific GRSs only SNPs associated exclusively with each lipid trait at $p < 5 \times 10^{-8}$ were used. The APOE rs4420638 SNP was not included in the calculation of the GRS because of its association with LOAD. rs581080 in TTC39B locus, rs9411489 of ABO locus, and rs3177928 in HLA locus were not successfully genotyped/imputed and we found no SNPs with $R^2 > 0.8$ that were successfully genotyped/imputed to be used as proxies. *Maximum.

(XLSX)

Table S2 Association of lipid genotype risk scores with LOAD per one unit increase in lipid levels.

(DOCX)

Text S1 Extended methods.

(DOCX)

Acknowledgments

We thank the individuals and families who took part in this research. We would like to acknowledge the use of the computational Linux cluster and the Biomedical Research Centre Nucleus Informatics Team at the National Institute for Health Research (NIHR) Mental Health Biomedical Research Centre and Dementia Unit at South London and Maudsley NHS Foundation Trust and [Institute of Psychiatry] King's College London.

Alzheimer's Disease Neuroimaging Initiative (ADNI) Collaborators

A complete listing of ADNI investigators can be found at: http://adni.loni.usc.edu/wp-content/uploads/how_to_apply/ADNI_Acknowledgement_List.pdf.

Genetic and Environmental Risk for Alzheimer's Disease Consortium (GERAD1) Collaborators

Denise Harold¹, Rebecca Sims¹, Amy Gerrish¹, Jade Chapman¹, Valentina Escott-Price¹, Richard Abraham¹, Paul Hollingworth¹, Marian Hamshere¹, Jaspreet Singh Pahwa¹, Kimberley Dowzell¹, Amy Williams¹, Nicola Jones¹, Charlene Thomas¹, Alexandra Stretton¹, Angharad Morgan¹, Kate Williams¹, Simon Lovestone², John Powell², Petroula Proitsi², Michelle K Lupton², Carol Brayne³, David C. Rubinsztein⁴, Michael Gill⁵, Brian Lawlor⁵, Aoibhinn Lynch⁵, Kevin Morgan⁶, Kristelle Brown⁶, Peter Passmore⁷, David Craig⁷, Bernadette McGuinness⁷, Janet A Johnston⁷, Stephen Todd⁷, Clive Holmes⁸, David Mann⁹, A. David Smith¹⁰, Seth Love¹¹, Patrick G. Kehoe¹¹, John Hardy¹², Rita Guerreiro^{13,33}, Andrew Singleton¹³, Simon Mead¹⁴, Nick Fox¹⁵, Martin Rossor¹⁵, John Collinge¹⁴, Wolfgang Maier¹⁶, Frank Jessen¹⁶, Reiner Heun¹⁶, Britta Schürmann^{16,17}, Alfredo Ramirez¹⁶, Tim Becker³⁴, Christine Herold³⁴, André Lacour³⁴, Dmitriy Drichel³⁴, Hendrik van den Bussche¹⁸, Isabella Heuser¹⁹, Johannes Kornhuber²⁰, Jens Wiltfang²¹, Martin Dichgans^{22,23}, Lutz Frölich²⁴, Harald Hampel²⁵, Michael Hüll²⁶, Dan Rujescu²⁷, Alison Goate²⁸, John S.K. Kauwe²⁹, Carlos Cruchaga²⁸, Petra Nowotny²⁸, John C. Morris²⁸, Kevin Mayo²⁸, Gill Livingston³⁰, Nicholas J. Bass³⁰, Hugh Gurling³⁰, Andrew McQuillin³⁰, Rhian Gwilliam³¹, Panagiotis Deloukas³¹, Markus M. Nöthen³², Peter Holmans¹, Michael O'Donovan¹, Michael J. Owen¹, Julie Williams¹.

1 Medical Research Council (MRC) Centre for Neuropsychiatric Genetics and Genomics, Neurosciences and Mental Health Research Institute, Department of Psychological Medicine and Neurology, School of Medicine, Cardiff University, Cardiff, United Kingdom,

2 King's College London, Institute of Psychiatry, Department of Neuroscience, London,

3 Institute of Public Health, University of Cambridge, Cambridge, United Kingdom.

4 Cambridge Institute for Medical Research, University of Cambridge, Cambridge, United Kingdom,

5 Mercer's Institute for Research on Aging, St. James Hospital and Trinity College, Dublin, Ireland,

6 Institute of Genetics, Queen's Medical Centre, University of Nottingham, Nottingham, United Kingdom,

7 Ageing Group, Centre for Public Health, School of Medicine, Dentistry and Biomedical Sciences, Queen's University Belfast, Belfast, United Kingdom,

8 Division of Clinical Neurosciences, School of Medicine, University of Southampton, Southampton, United Kingdom,

9 Clinical Neuroscience Research Group, Greater Manchester Neurosciences Centre, University of Manchester, Salford, United Kingdom,

10 Oxford Project to Investigate Memory and Ageing (OPTIMA), University of Oxford, John Radcliffe Hospital, Oxford, United Kingdom,

11 University of Bristol Institute of Clinical Neurosciences, School of Clinical Sciences, Frenchay Hospital, Bristol, United Kingdom,

12 Department of Molecular Neuroscience and Reta Lilla Weston Laboratories, Institute of Neurology, UCL, London, United Kingdom,

13 Laboratory of Neurogenetics, National Institute on Aging, National Institutes of Health, Bethesda, Maryland, United States of America,

14 MRC Prion Unit, Department of Neurodegenerative Disease, UCL Institute of Neurology, London, United Kingdom,

15 Dementia Research Centre, Department of Neurodegenerative Diseases, University College London, Institute of Neurology, London, United Kingdom,

16 Department of Psychiatry, University of Bonn, Bonn, Germany,

17 Institute for Molecular Psychiatry, University of Bonn, Bonn, Germany,

18 Institute of Primary Medical Care, University Medical Center Hamburg-Eppendorf, Germany,

19 Department of Psychiatry, Charité Berlin, Berlin, Germany,

20 Department of Psychiatry, University of Erlangen, Nürnberg, Germany,

21 LVR-Hospital Essen, Department of Psychiatry and Psychotherapy, University Duisburg-Essen, Germany,

22 Institute for Stroke and Dementia Research, Klinikum der Universität München, Munich, Germany,

23 Department of Neurology, Klinikum der Universität München, Munich, Germany,

24 Central Institute of Mental Health, Medical Faculty Mannheim, University of Heidelberg, Germany,

25 Department of Psychiatry, Psychosomatic Medicine and Psychotherapy, Goethe University, Frankfurt, Germany,

26 Centre for Geriatric Medicine and Section of Gerontopsychiatry and Neuropsychology, Medical School, University of Freiburg, Germany,

27 Alzheimer Memorial Center and Geriatric Psychiatry Branch, Department of Psychiatry, Ludwig-Maximilian University, Munich, Germany,

28 Departments of Psychiatry, Neurology and Genetics, Washington University School of Medicine, St Louis, Missouri, United States of America,

29 Department of Biology, Brigham Young University, Provo, Utah, United States of America,

30 Department of Mental Health Sciences, University College London, United Kingdom.

31 The Wellcome Trust Sanger Institute, Wellcome Trust Genome Campus, Hinxton, Cambridge, United Kingdom,

32 Department of Genomics, Life & Brain Center, University of Bonn, Bonn, Germany,

33 Department of Molecular Neuroscience, Institute of Neurology, University College London, London, United Kingdom,

34 Deutsches Zentrum für Neurodegenerative Erkrankungen (DZNE), Bonn, Germany

Author Contributions

Conceived and designed the experiments: PP JFP. Performed the experiments: PP. Analyzed the data: PP. Contributed reagents/materials/analysis tools: PP ML LV SN IF MT MD MP IK HS PM BV JW RS PS SL JFP GERAD1 ADNI. Wrote the first draft of the manuscript: PP JFP. Contributed to the writing of the manuscript: PP ML LV SN IF MT MD MP IK HS PM BV JW RS PS SL JFP. ICMJE criteria for authorship read and met: PP ML LV SN IF MT MD MP IK HS PM BV JW RS PS SL JFP. Agree with manuscript results and conclusions: PP ML LV SN IF MT MD MP IK HS PM BV JW RS PS SL JFP. Enrolled patients: MT IK HS PM BV JW SL GERAD1 ADNI.

References

- Reitz C (2013) Dyslipidemia and the risk of Alzheimer's disease. *Curr Atheroscler Rep* 15: 307.
- Reiss AB (2005) Cholesterol and apolipoprotein E in Alzheimer's disease. *Am J Alzheimers Dis Other Dement* 20: 91–96.
- Di PG, Kim TW (2011) Linking lipids to Alzheimer's disease: cholesterol and beyond. *Nat Rev Neurosci* 12: 284–296.
- Harold D, Abraham R, Hollingworth P, Sims R, Gerrish A, et al. (2009) Genome-wide association study identifies variants at CLU and PICALM associated with Alzheimer's disease. *Nat Genet* 41: 1088–1093.
- Hollingworth P, Harold D, Sims R, Gerrish A, Lambert JC, et al. (2011) Common variants at ABCA7, MS4A6A/MS4A4E, EPHA1, CD33 and CD2AP are associated with Alzheimer's disease. *Nat Genet* 43: 429–435.
- Lambert JC, Zelenika D, Hiltunen M, Chouraki V, Combarros O, et al. (2011) Evidence of the association of BIN1 and PICALM with the AD risk in contrasting European populations. *Neurobiol Aging* 32: 756–5.
- Whitmer RA, Sidney S, Selby J, Johnston SC, Yaffe K (2005) Midlife cardiovascular risk factors and risk of dementia in late life. *Neurology* 64: 277–281.
- Kivipelto M, Helkala EL, Laakso MP, Hanninen T, Hallikainen M, et al. (2002) Apolipoprotein E epsilon4 allele, elevated midlife total cholesterol level, and high midlife systolic blood pressure are independent risk factors for late-life Alzheimer disease. *Ann Intern Med* 137: 149–155.
- Solomon A, Kivipelto M, Wolozin B, Zhou J, Whitmer RA (2009) Midlife serum cholesterol and increased risk of Alzheimer's and vascular dementia three decades later. *Dement Geriatr Cogn Disord* 28: 75–80.
- Green RC, McNagny SE, Jayakumar P, Cupples LA, Benke K, et al. (2006) Statin use and the risk of Alzheimer's disease: the MIRAGE study. *Alzheimers Dement* 2: 96–103.
- Dufouil C, Richard F, Fievret N, Dartigues JF, Ritchie K, et al. (2005) APOE genotype, cholesterol level, lipid-lowering treatment, and dementia: the Three-City Study. *Neurology* 64: 1531–1538.
- Beydoun MA, Beason-Held LL, Kitzer-Triolo MH, Beydoun HA, Ferrucci L, et al. (2011) Statins and serum cholesterol's associations with incident dementia and mild cognitive impairment. *J Epidemiol Community Health* 65: 949–957.
- Mielke MM, Zandi PP, Shao H, Waern M, Ostling S, et al. (2010) The 32-year relationship between cholesterol and dementia from midlife to late life. *Neurology* 75: 1888–1895.
- Tan ZS, Seshadri S, Beiser A, Wilson PW, Kiel DP, et al. (2003) Plasma total cholesterol level as a risk factor for Alzheimer disease: the Framingham Study. *Arch Intern Med* 163: 1053–1057.
- Stewart R, White LR, Xue QL, Launer LJ (2007) Twenty-six-year change in total cholesterol levels and incident dementia: the Honolulu-Asia Aging Study. *Arch Neurol* 64: 103–107.
- (2002) MRC/BHF Heart Protection Study of cholesterol lowering with simvastatin in 20,536 high-risk individuals: a randomised placebo-controlled trial. *Lancet* 360: 7–22.
- Feldman HH, Doody RS, Kivipelto M, Sparks DL, Waters DD, et al. (2010) Randomized controlled trial of atorvastatin in mild to moderate Alzheimer disease: LEADe. *Neurology* 74: 956–964.
- Jones RW, Kivipelto M, Feldman H, Sparks L, Doody R, et al. (2008) The Atorvastatin/Donepezil in Alzheimer's Disease Study (LEADe): design and baseline characteristics. *Alzheimers Dement* 4: 145–153.
- Sano M, Bell KL, Galasko D, Galvin JE, Thomas RG, et al. (2011) A randomized, double-blind, placebo-controlled trial of simvastatin to treat Alzheimer disease. *Neurology* 77: 556–563.
- Willer CJ, Schmidt EM, Sengupta S, Peloso GM, Gustafsson S, et al. (2013) Discovery and refinement of loci associated with lipid levels. *Nat Genet* 45: 1274–1283.
- Lovestone S, Francis P, Strandgaard K (2007) Biomarkers for disease modification trials—the innovative medicines initiative and AddNeuroMed. *J Nutr Health Aging* 11: 359–361.
- McKhann G, Drachman D, Folstein M, Katzman R, Price D, et al. (1984) Clinical diagnosis of Alzheimer's disease: report of the NINCDS-ADRDA Work Group under the auspices of Department of Health and Human Services Task Force on Alzheimer's Disease. *Neurology* 34: 939–944.
- Clayton DG, Walker NM, Smyth DJ, Pask R, Cooper JD, et al. (2005) Population structure, differential bias and genomic control in a large-scale, case-control association study. *Nat Genet* 37: 1243–1246.
- Moskvina V, Craddock N, Holmans P, Owen MJ, O'Donovan MC (2006) Effects of differential genotyping error rate on the type I error probability of case-control studies. *Hum Hered* 61: 55–64.
- Purcell S, Neale B, Todd-Brown K, Thomas L, Ferreira MA, et al. (2007) PLINK: a tool set for whole-genome association and population-based linkage analyses. *Am J Hum Genet* 81: 559–575.
- Patterson N, Price AL, Reich D (2006) Population structure and eigenanalysis. *PLoS Genet* 2: e190.
- Weale ME (2010) Quality control for genome-wide association studies. *Methods Mol Biol* 628: 341–372.
- Howie BN, Donnelly P, Marchini J (2009) A flexible and accurate genotype imputation method for the next generation of genome-wide association studies. *PLoS Genet* 5: e1000529.
- Johnson AD, Handsaker RE, Pulit SL, Nizzari MM, O'Donnell CJ, et al. (2008) SNAP: a web-based tool for identification and annotation of proxy SNPs using HapMap. *Bioinformatics* 24: 2938–2939.
- Thomas DC, Lawlor DA, Thompson JR (2007) Re: Estimation of bias in nongenetic observational studies using “Mendelian triangulation” by Bautista, et al. *Ann Epidemiol* 17: 511–513.
- Pierce BL, Burgess S (2013) Efficient design for Mendelian randomization studies: subsample and 2-sample instrumental variable estimators. *Am J Epidemiol* 178: 1177–1184.
- Burgess S, Butterworth A, Thompson SG (2013) Mendelian randomization analysis with multiple genetic variants using summarized data. *Genet Epidemiol* 37: 658–665.
- Teslovich TM, Musunuru K, Smith AV, Edmondson AC, Stylianou IM, et al. (2010) Biological, clinical and population relevance of 95 loci for blood lipids. *Nature* 466: 707–713.
- Shepardson NE, Shankar GM, Selkoe DJ (2011) Cholesterol level and statin use in Alzheimer disease: I. Review of epidemiological and preclinical studies. *Arch Neurol* 68: 1239–1244.
- Solomon A, Kareholt I, Ngandu T, Winblad B, Nissinen A, et al. (2007) Serum cholesterol changes after midlife and late-life cognition: twenty-one-year follow-up study. *Neurology* 68: 751–756.
- Reed B, Villeneuve S, Mack W, DeCarli C, Chui HC, et al. (2014) Associations between serum cholesterol levels and cerebral amyloidosis. *JAMA Neurol* 71: 195–200.
- Ebrahim S, Davey SG (2008) Mendelian randomization: can genetic epidemiology help redress the failures of observational epidemiology? *Hum Genet* 123: 15–33.
- Lawlor DA, Harbord RM, Sterne JA, Timpson N, Davey SG (2008) Mendelian randomization: using genes as instruments for making causal inferences in epidemiology. *Stat Med* 27: 1133–1163.
- Waddington CH (1959) Canalization of development and genetic assimilation of acquired characters. *Nature* 183: 1654–1655.
- Dietschy JM, Turley SD (2001) Cholesterol metabolism in the brain. *Curr Opin Lipidol* 12: 105–112.
- Duron E, Hanon O (2008) Vascular risk factors, cognitive decline, and dementia. *Vasc Health Risk Manag* 4: 363–381.

Editors' Summary

Background. Currently, about 44 million people worldwide have dementia, a group of brain disorders characterized by an irreversible decline in memory, communication, and other “cognitive” functions. Dementia mainly affects older people and, because people are living longer, experts estimate that more than 135 million people will have dementia by 2050. The commonest form of dementia is Alzheimer disease. In this type of dementia, protein clumps called plaques and neurofibrillary tangles form in the brain and cause its degeneration. The earliest sign of Alzheimer disease is usually increasing forgetfulness. As the disease progresses, affected individuals gradually lose their ability to deal with normal daily activities such as dressing. They may become anxious or aggressive or begin to wander. They may also eventually lose control of their bladder and of other physical functions. At present, there is no cure for Alzheimer disease although some of its symptoms can be managed with drugs. Most people with the disease are initially cared for at home by relatives and other unpaid carers, but many patients end their days in a care home or specialist nursing home.

Why Was This Study Done? Several lines of evidence suggest that lipid metabolism (how the body handles cholesterol and other fats) is altered in patients whose Alzheimer disease develops after the age of 60 years (late onset Alzheimer disease, LOAD). In particular, epidemiological studies (observational investigations that examine the patterns and causes of disease in populations) have found an association between high amounts of cholesterol in the blood in midlife and the risk of LOAD. However, observational studies cannot prove that abnormal lipid metabolism (dyslipidemia) causes LOAD. People with dyslipidemia may share other characteristics that cause both dyslipidemia and LOAD (confounding) or LOAD might actually cause dyslipidemia (reverse causation). Here, the researchers use “Mendelian randomization” to examine whether lifetime changes in lipid metabolism caused by genes have a causal impact on LOAD risk. In Mendelian randomization, causality is inferred from associations between genetic variants that mimic the effect of a modifiable risk factor and the outcome of interest. Because gene variants are inherited randomly, they are not prone to confounding and are free from reverse causation. So, if dyslipidemia causes LOAD, genetic variants that affect lipid metabolism should be associated with an altered risk of LOAD.

What Did the Researchers Do and Find? The researchers investigated whether genetic predisposition to raised lipid levels increased the risk of LOAD in 10,578 participants (3,914 patients with LOAD, 1,675 elderly people without LOAD, and 4,989 population controls) using data collected in six genome wide studies looking for gene variants associated with Alzheimer disease. The researchers constructed a genotype risk score (GRS) for each participant using genetic

risk markers for four types of blood lipids on the basis of the presence of single nucleotide polymorphisms (SNPs, a type of gene variant) in their DNA. When the researchers used statistical methods to investigate the association between the GRS and LOAD among all the study participants, they found no association between the GRS and LOAD.

What Do These Findings Mean? These findings suggest that the genetic predisposition to raised blood levels of four types of lipid is not causally associated with LOAD risk. The accuracy of this finding may be affected by several limitations of this study, including the small proportion of lipid variance explained by the GRS and the validity of several assumptions that underlie all Mendelian randomization studies. Moreover, because all the participants in this study were white, these findings may not apply to people of other ethnic backgrounds. Given their findings, the researchers suggest that the observed epidemiological associations between abnormal lipid levels in the blood and variation in lipid levels for reasons other than genetics, or to LOAD risk could be secondary to variation in lipid levels for reasons other than genetics, or to LOAD, a possibility that can be investigated by studying blood lipid levels and other markers of lipid metabolism over time in large groups of patients with LOAD. Importantly, however, these findings provide new information about the role of lipids in LOAD development that may eventually lead to new therapeutic and public-health interventions for Alzheimer disease.

Additional Information. Please access these websites via the online version of this summary at <http://dx.doi.org/10.1371/journal.pmed.1001713>.

- The UK National Health Service Choices website provides information (including personal stories) about Alzheimer's disease
- The UK not-for-profit organization Alzheimer's Society provides information for patients and carers about dementia, including personal experiences of living with Alzheimer's disease
- The US not-for-profit organization Alzheimer's Association also provides information for patients and carers about dementia and personal stories about dementia
- Alzheimer's Disease International is the international federation of Alzheimer disease associations around the world; it provides links to individual associations, information about dementia, and links to World Alzheimer Reports
- MedlinePlus provides links to additional resources about Alzheimer's disease (in English and Spanish)
- Wikipedia has a page on Mendelian randomization (note: Wikipedia is a free online encyclopedia that anyone can edit; available in several languages)