



King's Research Portal

DOI:

[10.1038/npp.2012.207](https://doi.org/10.1038/npp.2012.207)

Document Version

Peer reviewed version

[Link to publication record in King's Research Portal](#)

Citation for published version (APA):

Stokes, P., Shotbolt, P., Mehta, M. A., Turkheimer, E., Benecke, A., Copeland, C., Turkheimer, F. E., Lingford-Hughes, A. R., & Howes, O. (2013). Nature or nurture? Determining the heritability of human striatal dopamine function: an [18F]-DOPA PET study. *Neuropsychopharmacology : official publication of the American College of Neuropsychopharmacology*, 38(3), 485-491. <https://doi.org/10.1038/npp.2012.207>

Citing this paper

Please note that where the full-text provided on King's Research Portal is the Author Accepted Manuscript or Post-Print version this may differ from the final Published version. If citing, it is advised that you check and use the publisher's definitive version for pagination, volume/issue, and date of publication details. And where the final published version is provided on the Research Portal, if citing you are again advised to check the publisher's website for any subsequent corrections.

General rights

Copyright and moral rights for the publications made accessible in the Research Portal are retained by the authors and/or other copyright owners and it is a condition of accessing publications that users recognize and abide by the legal requirements associated with these rights.

- Users may download and print one copy of any publication from the Research Portal for the purpose of private study or research.
- You may not further distribute the material or use it for any profit-making activity or commercial gain
- You may freely distribute the URL identifying the publication in the Research Portal

Take down policy

If you believe that this document breaches copyright please contact librarypure@kcl.ac.uk providing details, and we will remove access to the work immediately and investigate your claim.

Nature or nurture? Determining the heritability of human striatal dopamine function: an [18F]-DOPA PET study

Running title: Heritability of human striatal dopamine function

Paul RA Stokes^{1,5} PhD, Paul Shotbolt¹ MRCPsych, Mitul A Mehta^{2,4} PhD, Eric Turkheimer³ PhD, Aaf Benecke⁵, Caroline Copeland¹ BSc., Federico E. Turkheimer⁴ PhD, Anne R Lingford-Hughes⁵ PhD & Oliver D Howes¹ PhD

¹Psychiatric Imaging Group, MRC Clinical Sciences Centre, Imperial College London, Hammersmith Hospital, London, UK.

²Centre for Neuroimaging Sciences, Institute of Psychiatry at King's College London, London, UK.

³Department of Psychology, University of Virginia, Charlottesville, VA, USA.

⁴Division of Experimental Medicine, Department of Medicine, Imperial College London, London UK

⁵Centre for Neuropsychopharmacology, Division of Brain Sciences, Department of Medicine, Imperial College London, London, UK.

Corresponding author and address for correspondence

Dr. Paul RA Stokes

Psychiatric Imaging Group, MRC Clinical Sciences Centre, Imperial College,
Hammersmith Hospital Campus, Du Cane Road, London, UK W12 0NN

Phone:+44(0)2075942679 Fax:+44(0)2075946548

Email:paul.stokes@imperial.ac.uk

Abstract word count: 242 Text word count: 3080 Number of Figures: 2

Number of Tables: 1 Supplementary Information: 2 tables, 2 figures

Abstract

Striatal dopamine function is important for normal personality, cognitive processes and behaviour, and abnormalities are linked to a number of neuropsychiatric disorders. However, no studies have examined the relative influence of genetic inheritance and environmental factors in determining striatal dopamine function. Using [18F]-DOPA positron emission tomography (PET), we sought to determine the heritability of presynaptic striatal dopamine function by comparing variability in uptake values in same sex monozygotic (MZ) twins to dizygotic (DZ) twins. Nine MZ and ten DZ twin pairs underwent high resolution [18F]-DOPA PET to assess presynaptic striatal dopamine function. Uptake values for the overall striatum and functional striatal subdivisions were determined by a Patlak analysis using a cerebellar reference region. Heritability, shared environmental effects and non-shared individual-specific effects were estimated using a region of interest (ROI) analysis and a confirmatory parametric analysis. Overall striatal heritability estimates from the ROI and parametric analyses were 0.44 and 0.33 respectively. We found a distinction between striatal heritability in the functional subdivisions, with the greatest heritability estimates occurring in the sensorimotor striatum and the greatest effect of individual-specific environmental factors in the limbic striatum. Our results indicate that variation in overall presynaptic striatal dopamine function is determined by a combination of genetic factors and individual-specific environmental factors, with familial environmental effects having no effect. These

findings underline the importance of individual-specific environmental factors for striatal dopaminergic function, particularly in the limbic striatum, with implications for understanding neuropsychiatric disorders such as schizophrenia and addictions.

Key words: Twin, PET, dopamine, heritability, [18F]-DOPA, environment, striatum

Introduction

The striatal dopamine system plays an important role in both normal human behaviour and neuropsychiatric disorders. In healthy populations, variation in markers of striatal dopaminergic function have been associated with differences in the expression of personality traits (Egerton *et al*, 2010b; Gjedde *et al*, 2010; Kim *et al*, 2011; Reeves *et al*, 2007), social status (Martinez *et al*, 2010), and cognitive function (Cervenka *et al*, 2008; Landau *et al*, 2009; Reeves *et al*, 2005). In psychiatric disorders, increased dopaminergic function is associated with highly heritable disorders such as schizophrenia (Howes and Kapur, 2009; Kegeles *et al*, 2010), and decreased function with stimulant (Martinez *et al*, 2007) and alcohol addiction (Volkow *et al*, 2007). Although variation in striatal dopamine function occurs between individuals, little is known about the relative contribution of genetic inheritance and environmental influences on human striatal dopamine function. A better understanding of this is vital to the interpretation of the effects of variability in striatal dopaminergic function in both health and disease.

The human striatum can be functionally subdivided into three distinct areas: the limbic striatum, which mediates reward and motivation, the associative striatum which mediates working memory and executive functions, and the sensorimotor striatum which mediates movement (Cools and D'Esposito, 2011; Haber *et al*, 2000; Lappin *et al*, 2009). Variation in dopamine function in each striatal

subdivision is associated with alterations in corresponding behavioural modalities (Cools *et al*, 2009; Dreher *et al*, 2009; Forbes *et al*, 2009). Presynaptic dopamine function in these subdivisions can be imaged in the living human brain using 6-[¹⁸F]-L-DOPA ([¹⁸F]-DOPA) positron emission tomography (PET). [¹⁸F]-DOPA PET provides a measure of aromatic acid decarboxylase activity, which converts DOPA to dopamine, and as such the accumulation of [¹⁸F]-DOPA within the brain reflects the functional integrity of presynaptic dopamine synthesis (Cumming *et al*, 1997). We have previously shown that [¹⁸F]-DOPA PET provides good reliability both for the overall striatum and for the striatal subdivisions (Egerton *et al*, 2010a).

The relative influence of genetic and environmental factors on human biological systems can be examined through the use of twin studies. Twin studies assume that monozygotic (MZ) twins are genetically identical, so that most variation between MZ twins is due to environmental influences, and that dizygotic (DZ) twins share on average fifty percent of their genetic material. A comparison of intra-pair variation between MZ and DZ twin pairs allows for the estimation of heritability (h^2), the proportion of variation attributable to the additive effects of genes. Twin studies also allow for the estimation of shared (familial) environmental variance (c^2) and for the estimation of non-shared (individual-specific) environmental variance (e^2). Although twin studies provide a powerful way of interrogating the effects of genetic and environmental factors on biological variance, there have so far been no twin studies of the human dopamine system.

In this study we used [18F]-DOPA PET in healthy same sex MZ and DZ twin pairs to determine the relative contribution of genetic and environmental factors to variation in human presynaptic striatal dopamine function. We hypothesised that presynaptic striatal dopamine function would be more strongly influenced by genetic inheritance than by environmental influences, given the association between human dopaminergic function and highly heritable disorders such as schizophrenia.

Methods

Participants

Nine MZ same sex twin pairs (four male pairs, mean age 37.7 \pm 2.9 years) and ten DZ same sex twin pairs (five male pairs, mean age 39.5 \pm 3.2 years) were recruited to the study by means of public advertisement. The DZ twin cohort group was also used as a normal comparator group for a recently published study of [18F]-DOPA uptake in twins discordant for schizophrenia (Shotbolt *et al*, 2011). None of the twins had a history of a significant mental health disorder, alcohol or drug dependency, serious physical illness, past neurological disorders or previous use of psychotropic medications. Six MZ twins and four DZ twins were current cigarette smokers at the time of imaging and four MZ twins and seven DZ twins had previously used cannabis recreationally. Four DZ twins (two twin pairs) had previously used cocaine (mean duration since last use: 12

months ± 16.1); one twin had only ever used cocaine once, one used approximately twelve times over his lifetime, lifetime cocaine usage data are unavailable for the other two twins. All volunteers gave written informed consent for the study, which was approved both by the Hammersmith Research Ethics Committee and the Administration of Radioactive Substances Advisory Committee, UK.

Zygoty determination

At the time of imaging, zygoty determination was based on resemblance from direct observation, as well as verbal statements from twin pairs and their relatives. Twin zygoty status was subsequently confirmed after the completion of imaging, once we had obtained consent specifically for this from volunteers, by both DNA analysis and the use of the 'peas in the pod' twin zygoty questionnaire. For the DNA analysis, a multiplex PCR technique was used to determine whether twins shared 16 highly polymorphic microsatellite markers (from 7 to 17 alleles in length). This analysis yields a greater than 99.99% accuracy rate for MZ twins and 100% accuracy rate for DZ twins. The 'peas in the pod' twin zygoty questionnaire provides a greater than 96% accuracy rate for the determination of twin zygoty (Reed *et al*, 2005).

PET scanning and image acquisition

Each twin underwent one [18F]-DOPA PET scan. Volunteers were asked to abstain from alcohol for 24 hours prior to the scan and from smoking cigarettes for four hours prior to the scan. Each volunteer underwent a urine drug screen analysis on the day of the scan for cannabis, cocaine, methamphetamine, amphetamine, opiates and benzodiazepines. Any volunteer who produced a positive urine drug screen on the scan day was excluded from the study. All volunteers received 150mg carbidopa and 400mg entacapone orally one hour before scanning to reduce the formation of radiolabeled metabolites (Wahl *et al*, 1994). PET scans were performed using an ECAT/EXACT3D PET scanner (Siemens/CTI, Knoxville, USA), with a spatial resolution of 4.8 ± 0.2 mm and sensitivity of 69 cps/Bq/ml. A five-minute transmission scan was carried out before radiotracer injection to correct for attenuation and scatter. Approximately 150 MBq of 6-[18F]-L-DOPA ([18F]-DOPA) was administered by bolus intravenous injection thirty seconds after the start of the emission scan which lasted 95 minutes. Emission data were acquired in list mode and rebinned into 26 time frames. High resolution brain images were reconstructed from 95 planes with a slice spacing of 2.42 mm using the 3D re-projection algorithm.

Image analysis

All scans were first corrected for head movement using frame by frame (FBF) realignment as previously described (Montgomery *et al*, 2006). A region of interest (ROI) analysis was performed using an atlas comprised of the three functional subdivisions of the striatum; limbic, associative and sensorimotor striatum along with the cerebellum. These functional striatal subdivisions are anatomically analogous to the ventral striatum (limbic striatum), precommissural dorsal putamen, precommissural dorsal caudate and post commissural dorsal caudate (associative striatum) and post-commissural putamen (sensorimotor striatum) (Martinez *et al*, 2003). An [18F]-DOPA template (McGowan *et al*, 2004) was spatially transformed to the individual PET space of each movement corrected PET summation image using statistical parametric mapping (SPM5; Wellcome Department of Cognitive Neurology, London, England) and the resulting deformation matrix was then applied to the atlas (Meyer *et al*, 1999). This procedure allows for ROI's to be placed automatically on individual [18F]-DOPA PET images without observer bias. A graphical Patlak analysis was used to calculate [18F]-DOPA influx constants (K_i values) for the whole striatal ROI and right and left functional striatal subdivisions relative to uptake in the cerebellar reference region (Egerton *et al*, 2010a; Hoshi *et al*, 1993; Patlak and Blasberg, 1985).

Heritability analysis

[18F]-DOPA heritability values were calculated by fitting the data to a multilevel model with random effects. For observed variable y for twin i in family f , y is expressed as a family mean b_{0f} and within family variation ε_{if} :

$$y_{if} = b_{0f} + \varepsilon_{if},$$

with $\varepsilon_{if} \sim N(0, \sigma_w^2)$. The family mean b_{0f} is expressed as a population mean B_0 and deviations of family means μ_{0f} around the population mean.

$$b_{0f} = B_0 + \mu_{0f},$$

with $\mu_{0f} \sim N(0, \sigma_B^2)$.

The between and within family variances were reparameterized into useful terms for biometric analysis. First, the ratio of the between pair variance to the total phenotypic variation produces the intraclass correlation for family membership:

$$r_{ICC} = \frac{\sigma_B^2}{\sigma_B^2 + \sigma_w^2}$$

The between and within variances, directly computed in monozygotic and dizygotic twins without use of biometric constraints, were reparameterized into the three biometric variance components A (additive genetic effects), C (shared familial environment effects) and E (non-shared individual-specific environment effects). In MZ twins:

$$\sigma_w^2 = E$$

$$\sigma_B^2 = A + C$$

Whereas in DZ twins:

$$\sigma_w^2 = \frac{1}{2}A + E$$

$$\sigma_B^2 = \frac{1}{2}A + C$$

Finally, the ACE variance components were standardized into percentages of variation attributable to h^2 , c^2 , e^2 , for example the heritability, h^2 , which is equal to:

$$\frac{A}{A + C + E}$$

The models were fitted in Mplus using full information maximum likelihood estimation. Negative ACE variances were noted, fixed to zero and the model was then rerun to generate final results.

Additionally, we also applied an optimized voxel-level ICC analysis (for unordered pairs) to each set of twins (Caceres *et al*, 2009). This has the advantage that reliability of any given region can be calculated from the distribution of reliability from all voxels in that region, and also that reliability in a given region can be expressed relative to the whole brain.

Results

Zygoty determination

The zygosity status of 16/18 MZ twins (88%) and 14/20 DZ (70%) twins was confirmed using either DNA analysis results or questionnaire results. Of the remaining twins, one MZ pair declined and two DZ pairs and two individual DZ twins could not be re-contacted to obtain their consent for this.

ROI heritability results

MZ and DZ twin pair [18F]-DOPA uptake values for the overall and limbic striatum are shown in figure 1 (corresponding figures for the associative and sensorimotor striatum are displayed in supplementary information). Overall mean striatal [18F]-DOPA K_i values were 0.0146 (0.0009) for the MZ group and 0.0142 (0.0014) for the DZ group. MZ and DZ ICC values along with estimated h^2 , c^2 and e^2 values are shown in table 1. The heritability value for overall striatal [18F]-DOPA uptake was 0.44. Heritability estimates were highest in the sensorimotor striatum (right: 0.51, left: 0.64) and lowest in the limbic striatum (right: 0.21, left: 0). The influence of non-shared individual-specific environmental factors on overall striatal uptake variability was 0.56. Individual-specific environmental effects showed the reverse pattern to heritability in the functional striatal subdivisions with the highest values in the limbic striatum (right: 0.53, left: 0.70),

and the lowest values in the sensorimotor striatum (right: 0.49, left: 0.36). The pattern of these results did not change with the removal of one MZ twin pair whose zygosity status could not be confirmed (see supplementary table 1) or with the exclusion of two twin pairs with previous recreational experience of cocaine use (see supplementary table 2).

INSERT TABLE 1 AND FIGURE 1 HERE PLEASE

Parametric heritability results

Overall striatal MZ and DZ ICC values from the parametric image analysis were 0.44 and 0.27 respectively. These results generated h^2 , c^2 and e^2 estimates for the overall striatum of 0.33, 0.1 and 0.56 respectively. Areas of high within-pair striatal correlations (parametric ICC values between 0.5 and 1) are displayed in figure 2.

INSERT FIGURE 2 HERE PLEASE

Discussion

In this study we have determined, for the first time to our knowledge, the relative influence of genetic inheritance and environmental factors over presynaptic striatal dopamine function in the living human brain. Our main finding is that that overall striatal presynaptic dopaminergic function is determined by a combination of genetic factors, which accounted for 44% of the variance from the ROI analysis and 33% from the parametric analysis, and individual-specific environmental factors which accounted for 56% of the variance from both the ROI and parametric analyses. We found that shared familial environmental factors had very little influence over human presynaptic striatal dopamine function. Intriguingly, heritability estimates varied between functional striatal subdivisions with the highest heritability values found in the sensorimotor striatum and the lowest in the limbic striatum.

These results have a number of implications for the interpretation of variation in striatal dopaminergic function both in health and disease. Our finding that individual-specific environmental factors account for 56% of the variance of presynaptic striatal dopamine function is consistent with previous findings that striatal dopaminergic function is adaptive to environmental influences. For example in primates, striatal dopaminergic function can be altered by change in social hierarchy, and in humans striatal dopaminergic function is associated with social status and perceived social support (Martinez *et al*, 2010; Morgan *et al*,

2002). Interestingly, our results contrast to the heritability of the 5HT_{2A} receptor, the only other neurochemical system where heritability has been established in vivo, in which the individual-specific environmental influences accounted for less than 10% of the variance of the cortical signal (Pinborg *et al*, 2008). One explanation for this contrast could be due to differences in measurement error, which contributes to the individual environmental variance term, between the two tracers. However, as the test-retest variability of [18F]-DOPA uptake (4-6%) (Egerton *et al*, 2010a) is similar to [18F]-altanserin variability (5-12%) (Haugbol *et al*, 2007), this does not account for the large differences in the individual-specific environmental variance observed between the two systems. There would therefore seem to be a marked difference in the adaptability of these two neurochemical systems to non-shared individual-specific environmental influences.

We interpret the relatively greater influence of individual-specific environmental factors on limbic presynaptic striatal dopamine function as a reflection of the greater responsiveness of the limbic striatum to environmental factors when compared to other functional striatal areas. A number of studies support this interpretation; the greatest increases in striatal dopamine release produced by environmental stimuli such as stress, monetary reward and playing a video game occurs in the ventral striatum rather than more dorsal striatal functional subdivisions (Koepp *et al*, 1998; Pappata *et al*, 2002; Pruessner *et al*, 2004; Schott *et al*, 2008). Use of stimulants, such as amphetamine, may also act

preferentially to increase limbic striatal dopamine release. This is supported by amphetamine challenge studies in healthy volunteers which report greater dopamine release in the ventral striatum in healthy volunteers compared to other striatal subregions (Martinez *et al*, 2003; Willeit *et al*, 2008). Indeed in modeling sensitization to stimulants in humans, Boileau and colleagues reported that sensitization of the striatal dopamine system is greatest in the ventral striatum and with repeated exposure progressively involves the dorsal caudate and putamen (Boileau *et al*, 2006). This is exactly the pattern of sensitization we would predict based on our findings.

The influence of individual-specific environmental influences on presynaptic dopamine function also has implications for the interpretation of studies of dopaminergic function in neuropsychiatric conditions such as schizophrenia and addictions. We previously found no increases in [18F]-DOPA uptake in healthy DZ co-twins of patients with schizophrenia, at high genetic risk of developing the disorder, which supports the role that environmental factors may play in influencing increased [18F]-DOPA uptake found in schizophrenia (Shotbolt *et al*, 2011). The findings from this present study indicate that disease alterations in the limbic striatum in both schizophrenia and addictions are more likely to reflect individual-specific environmental than inherited risk factors for these conditions and we would suggest that future environmental risk studies focus particularly on limbic striatal function.

There are several limitations to the present study. Firstly, the number of volunteers imaged was small in comparison to epidemiological twin studies, restricting our statistical power. However, we have previously shown very good test-retest reliability (intra-class correlation coefficient >0.84) for striatal [18F]-DOPA PET imaging on the scanner used for this study with a smaller volunteer sample size (Egerton *et al*, 2010a). Furthermore, our cohort of volunteers is larger than the 5HT_{2A} twin study (Pinborg *et al*, 2008). Secondly, the reliability of [18F]-DOPA PET measurements varies between functional subdivisions studied, with the greatest variability occurring in the limbic striatum. Limbic heritability estimates may therefore be less reliable than other functional subdivisions which potentially could influence the heritability pattern between functional subdivisions. However, within subject variability in the limbic striatum, although greater than in sensorimotor striatum, is nevertheless low, less than 8% (Egerton *et al*, 2010a), so this is unlikely to account for the approximately 40% difference we found in heritability between the limbic and sensorimotor striatal regions. Thirdly, the zygosity status of one pair of MZ twins was not confirmed by genetic analysis as they declined to provide consent for zygosity testing. Although the possibility remains that this pair may have been dizygotic, this is unlikely given the physical similarity of the pair at the time of imaging and a previous study confirming zygosity status in over 95% of twins who reported that they were monozygotic (Reed *et al*, 2005). Moreover, the pattern of our results did not change with the exclusion of this pair from our analysis.

In summary, we have demonstrated that overall presynaptic dopamine function is determined by a combination of genetic and individual-specific environmental factors and that heritability varies between functional striatal subdivisions. These findings underline the adaptability of the striatal dopaminergic system, and particularly the limbic striatum, to individual-specific environmental influences. We would suggest that it is important to explore whether similar patterns of heritability also occur in twin studies of striatal dopamine release and postsynaptic striatal dopamine D₂/D₃ receptor availability. Our findings also reinforce the importance of identifying the underlying neurochemical mechanisms that mediate the effects of unique environmental factors on striatal dopamine function.

Disclosures/Conflict of Interest

The authors declare no conflicts of interest. Dr. Stokes, Dr. Shotbolt, Ms Benecke, Ms Copeland and Prof. Federico Turkheimer report no financial disclosures. Dr. Mehta received research grant support from Eli Lilly, acted as a consultant for Cambridge Cognition and UCB PLC and received a speaker's fee from Shire Pharmaceuticals. Prof. Eric Turkheimer is funded by NIH and is a paid consultant on a NIH funded twin study at the University of Washington. He receives no consulting funding from any private organizations. Prof. Lingford-Hughes has received honoraria from Janssen-Cilag, Pfizer, Servier, Lundbeck and from the British Association for Psychopharmacology. She has provided consultancy to NET Device Corp, received research funding from Archimedes,

Lundbeck, Pfizer and Schering, and holds research grants with GlaxoSmithKline. Dr Howes has received research funding from the MRC (grant: MC-A656-5QD30) for this study. He has received investigator-led charitable research funding or has been on the speaker bureaux for Astra-Zeneca, BMS, Eli Lilly, and Jansenn Cilag.

Acknowledgments

We would like to acknowledge the support and guidance of Prof. Paul Grasby in the design and implementation of this study. This study was funded by grant funding (grant code: U.1200.04.007.00001.01) from the Medical Research Council, UK.

References

Boileau I, Dagher A, Leyton M, Gunn RN, Baker GB, Diksic M, *et al* (2006). Modeling sensitization to stimulants in humans: an [11C]raclopride/positron emission tomography study in healthy men. *Arch Gen Psychiatry* **63**(12): 1386-1395.

Caceres A, Hall DL, Zelaya FO, Williams SC, Mehta MA (2009). Measuring fMRI reliability with the intra-class correlation coefficient. *Neuroimage* **45**(3): 758-768.

Cervenka S, Backman L, Cselenyi Z, Halldin C, Farde L (2008). Associations between dopamine D2-receptor binding and cognitive performance indicate functional compartmentalization of the human striatum. *Neuroimage* **40**(3): 1287-1295.

Cools R, D'Esposito M (2011). Inverted-U-shaped dopamine actions on human working memory and cognitive control. *Biol Psychiatry* **69**(12): e113-125.

Cools R, Frank MJ, Gibbs SE, Miyakawa A, Jagust W, D'Esposito M (2009). Striatal dopamine predicts outcome-specific reversal learning and its sensitivity to dopaminergic drug administration. *J Neurosci* **29**(5): 1538-1543.

Cumming P, Deep P, Rousset O, Evans A, Gjedde A (1997). On the rate of decarboxylation of dopa to dopamine in living mammalian brain. *Ann N Y Acad Sci* **835**: 274-308.

Dreher JC, Kohn P, Kolachana B, Weinberger DR, Berman KF (2009). Variation in dopamine genes influences responsivity of the human reward system. *Proc Natl Acad Sci U S A* **106**(2): 617-622.

Egerton A, Demjaha A, McGuire P, Mehta MA, Howes OD (2010a). The test-retest reliability of 18F-DOPA PET in assessing striatal and extrastriatal presynaptic dopaminergic function. *Neuroimage* **50**(2): 524-531.

Egerton A, Rees E, Bose SK, Lappin JM, Stokes PR, Turkheimer FE, *et al* (2010b). Truth, lies or self-deception? Striatal D(2/3) receptor availability predicts individual differences in social conformity. *Neuroimage* **53**(2): 777-781.

Forbes EE, Brown SM, Kimak M, Ferrell RE, Manuck SB, Hariri AR (2009). Genetic variation in components of dopamine neurotransmission impacts ventral striatal reactivity associated with impulsivity. *Mol Psychiatry* **14**(1): 60-70.

Gjedde A, Kumakura Y, Cumming P, Linnet J, Moller A (2010). Inverted-U-shaped correlation between dopamine receptor availability in striatum and sensation seeking. *Proc Natl Acad Sci U S A* **107**(8): 3870-3875.

Haber SN, Fudge JL, McFarland NR (2000). Striatonigrostriatal pathways in primates form an ascending spiral from the shell to the dorsolateral striatum. *J Neurosci* **20**(6): 2369-2382.

Haugbol S, Pinborg LH, Arfan HM, Frokjaer VM, Madsen J, Dyrby TB, *et al* (2007). Reproducibility of 5-HT_{2A} receptor measurements and sample size estimations with [18F]altanserin PET using a bolus/infusion approach. *Eur J Nucl Med Mol Imaging* **34**(6): 910-915.

Hoshi H, Kuwabara H, Leger G, Cumming P, Guttman M, Gjedde A (1993). 6-[18F]fluoro-L-dopa metabolism in living human brain: a comparison of six analytical methods. *J Cereb Blood Flow Metab* **13**(1): 57-69.

Howes OD, Kapur S (2009). The dopamine hypothesis of schizophrenia: version III--the final common pathway. *Schizophr Bull* **35**(3): 549-562.

Kegeles LS, Abi-Dargham A, Frankle WG, Gil R, Cooper TB, Slifstein M, *et al* (2010). Increased synaptic dopamine function in associative regions of the striatum in schizophrenia. *Arch Gen Psychiatry* **67**(3): 231-239.

Kim JH, Son YD, Kim HK, Lee SY, Cho SE, Kim YB, *et al* (2011). Association of harm avoidance with dopamine D2/3 receptor availability in striatal subdivisions: a high resolution PET study. *Biol Psychol* **87**(1): 164-167.

Koepp MJ, Gunn RN, Lawrence AD, Cunningham VJ, Dagher A, Jones T, *et al* (1998). Evidence for striatal dopamine release during a video game. *Nature* **393**(6682): 266-268.

Landau SM, Lal R, O'Neil JP, Baker S, Jagust WJ (2009). Striatal dopamine and working memory. *Cereb Cortex* **19**(2): 445-454.

Lappin JM, Reeves SJ, Mehta MA, Egerton A, Coulson M, Grasby PM (2009). Dopamine release in the human striatum: motor and cognitive tasks revisited. *J Cereb Blood Flow Metab* **29**(3): 554-564.

Martinez D, Narendran R, Foltin RW, Slifstein M, Hwang DR, Broft A, *et al* (2007). Amphetamine-induced dopamine release: markedly blunted in cocaine dependence and predictive of the choice to self-administer cocaine. *Am J Psychiatry* **164**(4): 622-629.

Martinez D, Orlowska D, Narendran R, Slifstein M, Liu F, Kumar D, *et al* (2010). Dopamine type 2/3 receptor availability in the striatum and social status in human volunteers. *Biol Psychiatry* **67**(3): 275-278.

Martinez D, Slifstein M, Broft A, Mawlawi O, Hwang DR, Huang Y, *et al* (2003). Imaging human mesolimbic dopamine transmission with positron emission tomography. Part II: amphetamine-induced dopamine release in the functional subdivisions of the striatum. *J Cereb Blood Flow Metab* **23**(3): 285-300.

McGowan S, Lawrence AD, Sales T, Quedsted D, Grasby P (2004). Presynaptic dopaminergic dysfunction in schizophrenia: a positron emission tomographic [¹⁸F]fluorodopa study. *Arch Gen Psychiatry* **61**(2): 134-142.

Meyer JH, Gunn RN, Myers R, Grasby PM (1999). Assessment of spatial normalization of PET ligand images using ligand-specific templates. *Neuroimage* **9**(5): 545-553.

Montgomery AJ, Thielemans K, Mehta MA, Turkheimer F, Mustafovic S, Grasby PM (2006). Correction of head movement on PET studies: comparison of methods. *J Nucl Med* **47**(12): 1936-1944.

Morgan D, Grant KA, Gage HD, Mach RH, Kaplan JR, Prioleau O, *et al* (2002). Social dominance in monkeys: dopamine D2 receptors and cocaine self-administration. *Nat Neurosci* **5**(2): 169-174.

Pappata S, Dehaene S, Poline JB, Gregoire MC, Jobert A, Delforge J, *et al* (2002). In vivo detection of striatal dopamine release during reward: a PET study with [(11)C]raclopride and a single dynamic scan approach. *Neuroimage* **16**(4): 1015-1027.

Patlak CS, Blasberg RG (1985). Graphical evaluation of blood-to-brain transfer constants from multiple-time uptake data. Generalizations. *J Cereb Blood Flow Metab* **5**(4): 584-590.

Pinborg LH, Arfan H, Haugbol S, Kyvik KO, Hjelmborg JV, Svarer C, *et al* (2008). The 5-HT_{2A} receptor binding pattern in the human brain is strongly genetically determined. *Neuroimage* **40**(3): 1175-1180.

Pruessner JC, Champagne F, Meaney MJ, Dagher A (2004). Dopamine release in response to a psychological stress in humans and its relationship to early life maternal care: a positron emission tomography study using [11C]raclopride. *J Neurosci* **24**(11): 2825-2831.

Reed T, Plassman BL, Tanner CM, Dick DM, Rinehart SA, Nichols WC (2005). Verification of self-report of zygosity determined via DNA testing in a subset of the NAS-NRC twin registry 40 years later. *Twin Res Hum Genet* **8**(4): 362-367.

Reeves SJ, Grasby PM, Howard RJ, Bantick RA, Asselin MC, Mehta MA (2005). A positron emission tomography (PET) investigation of the role of striatal dopamine (D2) receptor availability in spatial cognition. *Neuroimage* **28**(1): 216-226.

Reeves SJ, Mehta MA, Montgomery AJ, Amiras D, Egerton A, Howard RJ, *et al* (2007). Striatal dopamine (D2) receptor availability predicts socially desirable responding. *Neuroimage* **34**(4): 1782-1789.

Schott BH, Minuzzi L, Krebs RM, Elmenhorst D, Lang M, Winz OH, *et al* (2008). Mesolimbic functional magnetic resonance imaging activations during reward anticipation correlate with reward-related ventral striatal dopamine release. *J Neurosci* **28**(52): 14311-14319.

Shotbolt P, Stokes PR, Owens SF, Touloupoulou T, Picchioni MM, Bose SK, *et al* (2011). Striatal dopamine synthesis capacity in twins discordant for schizophrenia. *Psychol Med* **41**(11): 2331-2338.

Volkow ND, Wang GJ, Telang F, Fowler JS, Logan J, Jayne M, *et al* (2007). Profound decreases in dopamine release in striatum in detoxified alcoholics: possible orbitofrontal involvement. *J Neurosci* **27**(46): 12700-12706.

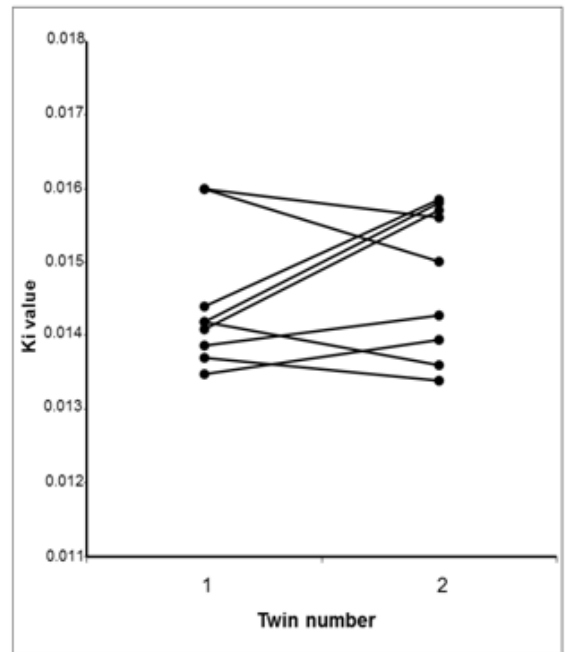
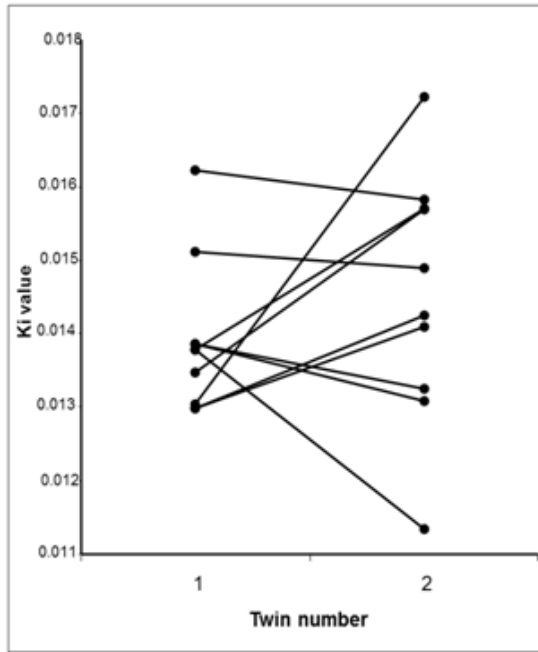
Wahl L, Chirakal R, Firnau G, Garnett ES, Nahmias C (1994). The distribution and kinetics of [18F]6-fluoro-3-O-methyl-L-dopa in the human brain. *J Cereb Blood Flow Metab* **14**(4): 664-670.

Willeit M, Ginovart N, Graff A, Rusjan P, Vitcu I, Houle S, *et al* (2008). First human evidence of d-amphetamine induced displacement of a D2/3 agonist radioligand: A [11C]-(+)-PHNO positron emission tomography study. *Neuropsychopharmacology* **33**(2): 279-289.

Striatal area	MZ ICC	DZ ICC	h^2	c^2	e^2
Right limbic	0.17	0.36	0.21 (0.75)	0.26 (0.54)	0.53 (0.31)
Left limbic	0.08	0.28	0	0.30 (0.21)	0.70 (0.21)
Right associative	0.36	0.13	0.46 (0.33)	0	0.54 (0.33)
Left associative	0.30	0.18	0.51 (0.28)	0	0.49 (0.28)
Right sensorimotor	0.64	0.02	0.51 (0.22)	0	0.49 (0.22)
Left sensorimotor	0.67	0.04	0.64 (0.23)	0	0.36 (0.23)
Overall striatum	0.39	0.06	0.44 (0.36)	0	0.56 (0.36)

Table 1: Heritability estimates (h^2) estimates and estimates of the effect of shared (c^2) and non-shared environmental (e^2) factors on presynaptic striatal dopaminergic function ()= Standard error

A



B

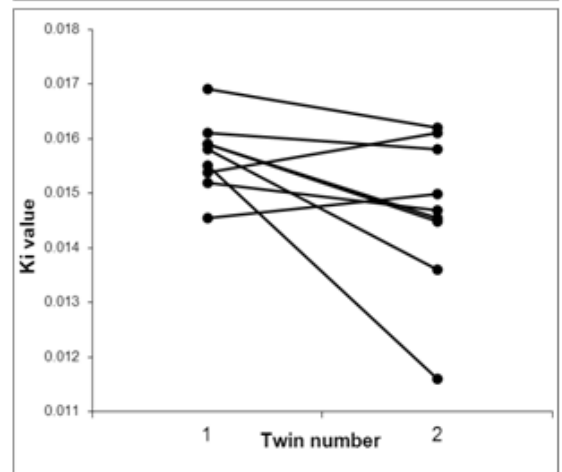
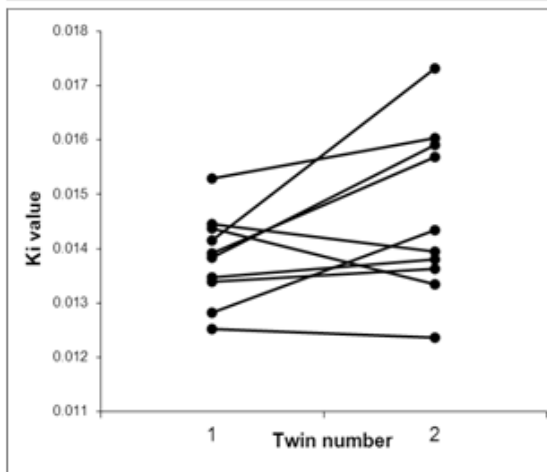
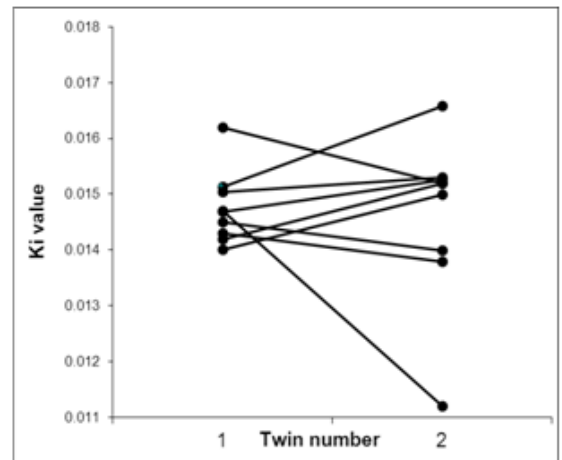
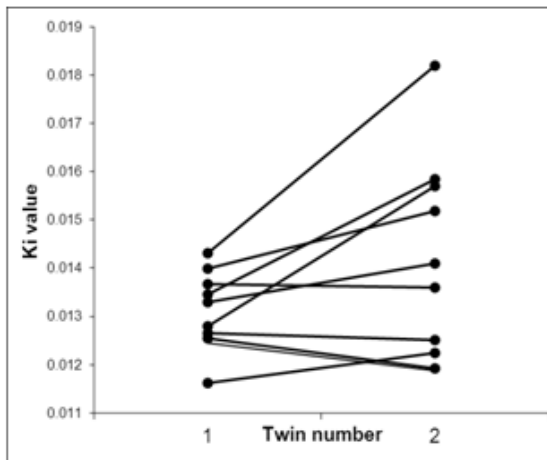


Figure 1: A) Overall striatal [18F]-DOPA Ki values for MZ (right) and DZ (left) twin pairs. B) Right and left limbic striatal [18F]-DOPA Ki values for MZ (right) and DZ (left) twin pairs (right limbic: upper row, left limbic: lower row).

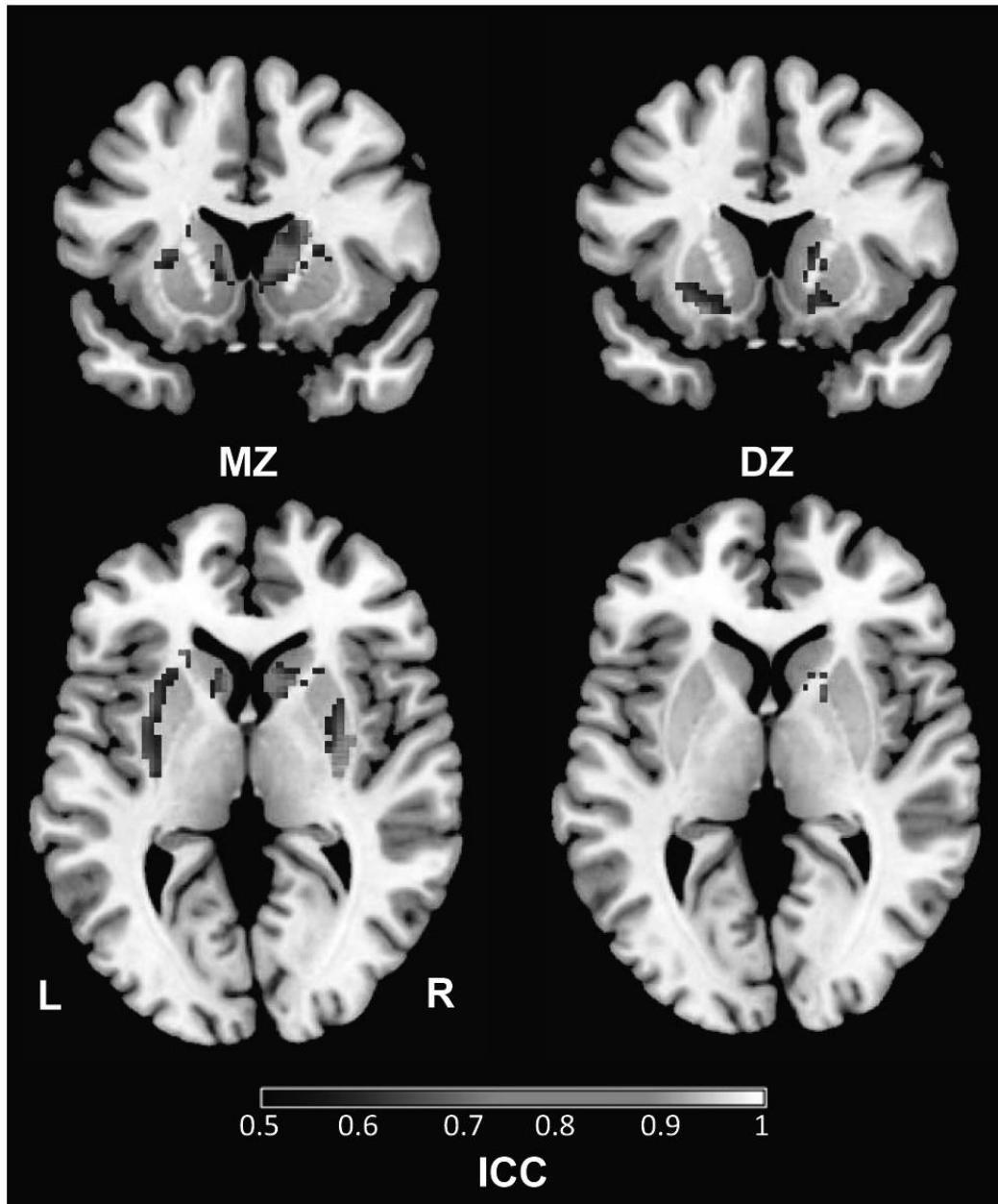


Figure 2: Areas of high within twin pair striatal [18F]-DOPA uptake correlations (parametric ICC values between 0.5 and 1).